



Manuals.plus /

› RELXTIME /

› RELXTIME Oval Inflatable Hot Tub User Manual

RELXTIME PH050012

RELXTIME Oval Inflatable Hot Tub User Manual

Model: PH050012

1. INTRODUCTION AND OVERVIEW

Welcome to the RELXTIME Oval Inflatable Hot Tub experience. This portable spa is designed for intimate relaxation, comfortably accommodating two persons. It features 100 high-powered bubble jets for deep relief and a built-in heater to maintain your desired water temperature. This manual provides essential information for the safe and efficient setup, operation, and maintenance of your hot tub.



Image: The RELXTIME Oval Inflatable Hot Tub in use, showing its compact design and two-person capacity.

2. SAFETY INFORMATION

Before operating your RELXTIME Inflatable Hot Tub, please read and understand all safety warnings and instructions. Failure to follow these instructions could result in injury or property damage.

- **Electrical Safety:** Always connect the hot tub to a grounded outlet. Do not use extension cords. Ensure the power cable is not damaged.
- **Water Safety:** Never leave children unattended near the hot tub. Maintain proper water chemistry to prevent skin irritation and equipment damage.
- **Temperature:** The maximum water temperature is 104°F (40°C). Prolonged exposure to higher temperatures can be hazardous to your health.
- **Health Considerations:** Consult a physician before use if you have pre-existing health conditions, are pregnant, or are elderly.
- **Placement:** Ensure the hot tub is placed on a flat, stable surface capable of supporting its weight when filled.
- **Certifications:** This air jet inflatable spa is CE, GS, ETL, EMC, UKCA listed, ensuring guaranteed quality and performance durability.

3. PACKAGE CONTENTS

Verify that all components are present in your package before beginning setup:

- 1 x Inflatable Hot Tub
- 1 x Drink Tray
- 1 x Pool Cover
- 2 x Filter Cartridges

- 2 x Filter Covers
- 1 x Repair Kit
- 1 x Inflation Hose
- 1 x Power Cable
- 1 x Storage Bag
- 1 x Instruction Manual (this document)

DELUXE ACCESSORIES



Image: A visual representation of all deluxe accessories included with your hot tub.

4. SETUP INSTRUCTIONS

Setting up your RELXTIME Inflatable Hot Tub is designed to be quick and effortless. Follow these steps for proper installation:

1. **Choose Location:** Select a flat, stable, and level surface outdoors. Ensure it is free from sharp objects and can support the weight of the filled hot tub (approximately 145 gallons of water plus occupants). For extra insulation, placing a thick mat (not included) beneath the tub is recommended.
2. **Unpack:** Remove the hot tub and all accessories from the storage bag.

3. **Inflate:** Connect the inflation hose to the hot tub's air valve and the pump. Inflate the hot tub until it is firm to the touch but not overinflated. The built-in system works in approximately 3 minutes.
4. **Fill with Water:** Fill the hot tub with water to the recommended fill line.
5. **Connect Power:** Plug the power cable into a grounded electrical outlet.



Image: Detailed display of inflatable spa features, including the filter cartridge and drain valve.



Image: The RELXTIME Inflatable Hot Tub Spa set up on an outdoor patio.

5. OPERATING INSTRUCTIONS

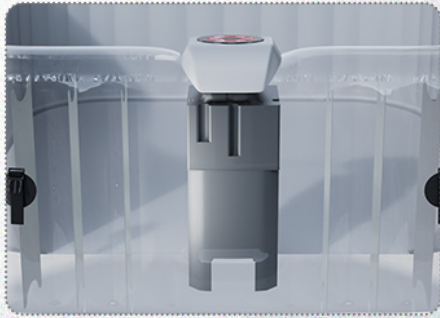
Your RELXTIME hot tub features a user-friendly digital control panel for easy management of its functions.



Image: The digital control panel for effortless setup and adjustment.

NO TOOLS. NO WAITING.

Built-in System Works in 3 minutes



- ✓ **Instant Use: 2-3 minute**
- ✓ **No Tools Needed**
- ✓ **No External Hose**
- ✓ **Occupancy Only 0.15 m³**



VS

Traditional External Unit



- ✗ **Hassle Alert: Old-Style Setup**
- ✗ **15+ mins assembly**
- ✗ **Error codes from loose connections**
- ✗ **Hose break risks**
- ✗ **Toolbox required**

Image: Hot Tub Control Panel Interface, detailing buttons for temperature, filter, bubble, and heater.

Control Panel Functions:

- **Temperature Adjustment:** Use the 'Temperature Up' and 'Temperature Down' buttons to set your desired water temperature between 68°F (20°C) and 104°F (40°C). The default temperature is 100°F (38°C).
- **Heater:** Activate the 1350W built-in heater to warm the water. The heating rate is approximately 1-1.5°C/hr (1.8-2.7°F/hr).
- **Bubble System:** Press the 'Bubble' button to activate the 100 air jets for a relaxing massage.
- **Water Filtration:** The 'Filter' button controls the water filtration system, helping to keep the water clean and reduce the frequency of water changes.

Video: An official product video demonstrating the RELXTIME Oval Inflatable Hot Tub in various settings, highlighting its features and ease of use.

6. MAINTENANCE

Regular maintenance is crucial for the longevity and optimal performance of your hot tub.

- **Water Treatment:** The integrated hard water treatment system helps keep the water gentle on your skin. Regularly test and adjust water chemistry as needed.
- **Filter Cartridges:** Clean filter cartridges regularly and replace them every few weeks, depending on usage, to ensure efficient filtration.
- **Cleaning:** Periodically drain and clean the interior of the hot tub. Use mild soap and water, then rinse thoroughly.
- **Freeze Protection:** In cold weather, the Freeze Protection Function automatically activates to prevent internal components from freezing. However, it is recommended to drain and store the hot tub if temperatures are consistently below freezing for extended periods.
- **Cover Usage:** Always use the included pool cover when the hot tub is not in use. This helps maintain

water temperature, keeps debris out, and enhances safety.

DIGITAL CONTROL PANEL

Features a digital control panel for effortless setup and adjustment with single button operation.



Image: Features like the filter cartridge and child safety lock contribute to easy maintenance and safety.

7. TROUBLESHOOTING

If you encounter issues with your RELXTIME Inflatable Hot Tub, refer to the following common solutions:

- **No Power:** Ensure the power cable is securely plugged into a grounded outlet. Check your household circuit breaker.
- **Water Not Heating:** Verify the heater function is activated on the control panel. Ensure the filter is clean and water level is adequate.
- **Weak Bubbles:** Check if the air jets are obstructed. Ensure the hot tub is properly inflated.
- **Water Quality Issues:** Test water chemistry and adjust as necessary. Clean or replace filter cartridges.
- **Leakage:** Use the provided repair kit for minor punctures. For significant leaks, contact customer support.

For more complex issues, please refer to the detailed troubleshooting section on the product's official support page or contact RELXTIME customer service.

8. SPECIFICATIONS

Feature	Specification
Brand	RELXTIME
Model Name	AirJet Hot Tub
Model Number	PH050012
Color	Blue
Product Dimensions	75"L x 47"W x 25.6"H
Material	Polyvinyl Chloride (PVC)
Voltage	120 Volts
Shape	Oval
Capacity	145 Gallons
Number of Jets	100
Seating Capacity	2 Persons

INFLATABLE OVAL HOT TUB 2 PERSON

High-Quality Water Filtration System

Keep the water clean

I-Beam Construction

Stability and Puncture-Resistant

RELXTIME



Image: Key features of the inflatable oval hot tub, including filtration and construction details.

LAYER CONSTRUCTION FOR EXTRA COMFORT



Rated Power
1350W



Number of Jets
100



Water Capacity
145 GAL



Capacity
2 Persons



Power Cord
10.8ft

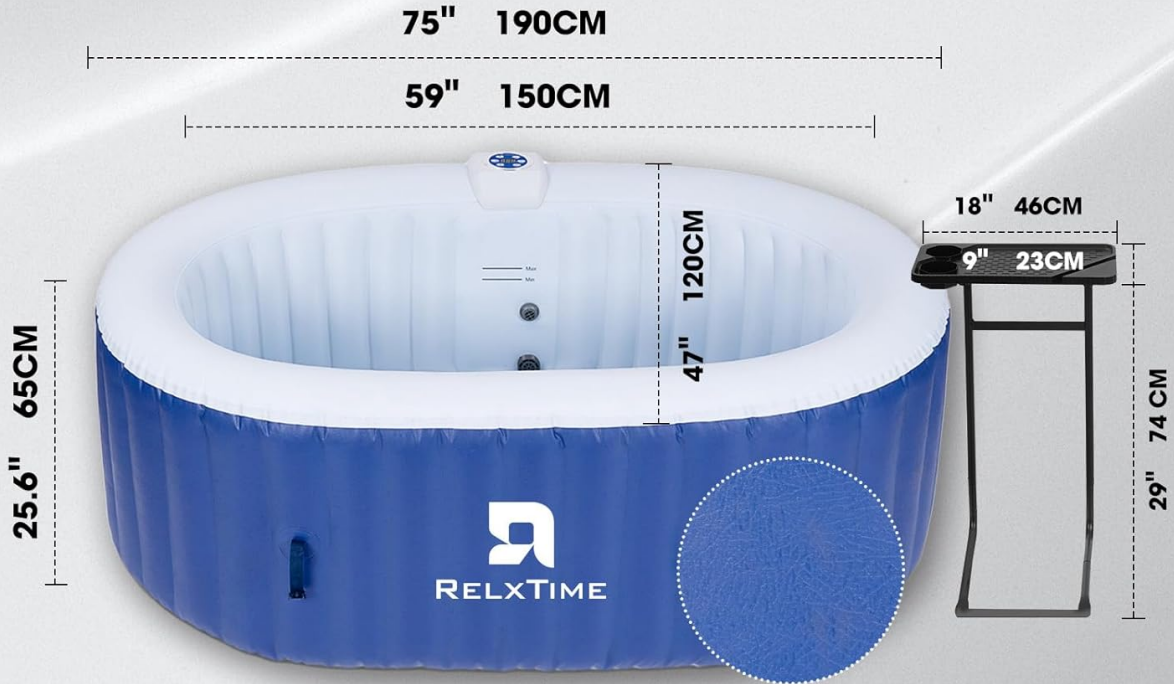


Image: Detailed dimensions and specifications for the hot tub and its accessories.

RELXTIME

AUTOMATIC HEATING SYSTEM

Exclusive spa experience

68-104°F(20-40°C)

The default temperature is set at 100°F/38°C

Fast heating: 1-1.5°C/hr(1.8-2.7°F/hr)

Image: Information on the automatic heating system, including temperature range and heating speed.

HEATING TIME

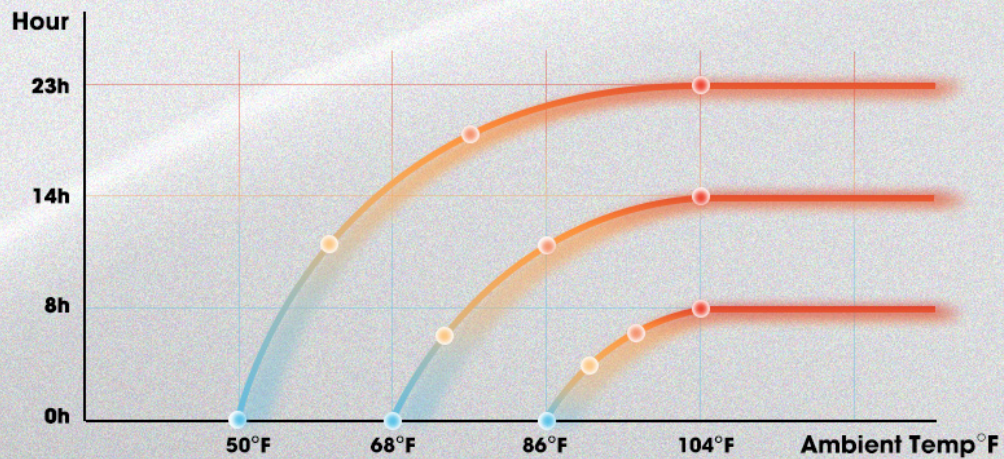


Image: A graph illustrating the heating time of the hot tub based on ambient temperature.

9. WARRANTY AND SUPPORT

Your RELXTIME Oval Inflatable Hot Tub comes with a return policy. Please refer to the product's original purchase page for the most up-to-date and detailed warranty information. For customer support, including technical assistance or parts replacement, please contact RELXTIME customer service through the retailer where you purchased the product.

- **Returns:** 30-day easy returns are typically available.
- **Customer Support:** Contact information can usually be found on the product listing or the RELXTIME brand store page.