

AROEVE JHD03W

AROEVE JHD03W Air Purifier Replacement Filter Instruction Manual

PRODUCT OVERVIEW

This document provides instructions for the AROEVE JHD03W 4-in-1 replacement filter, designed for use with compatible AROEVE air purifiers. This filter is engineered to capture various airborne particles and odors, contributing to improved indoor air quality.

About Your AROEVE JHD03W Replacement Filter

The AROEVE JHD03W replacement filter features a comprehensive 4-stage filtration system. This system includes a pre-filter, a silver ion layer, a HEPA filter, and an activated carbon filter. It is designed to remove 99.9% of particles larger than 0.3 microns, such as dust, allergens, pet dander, and pollen.

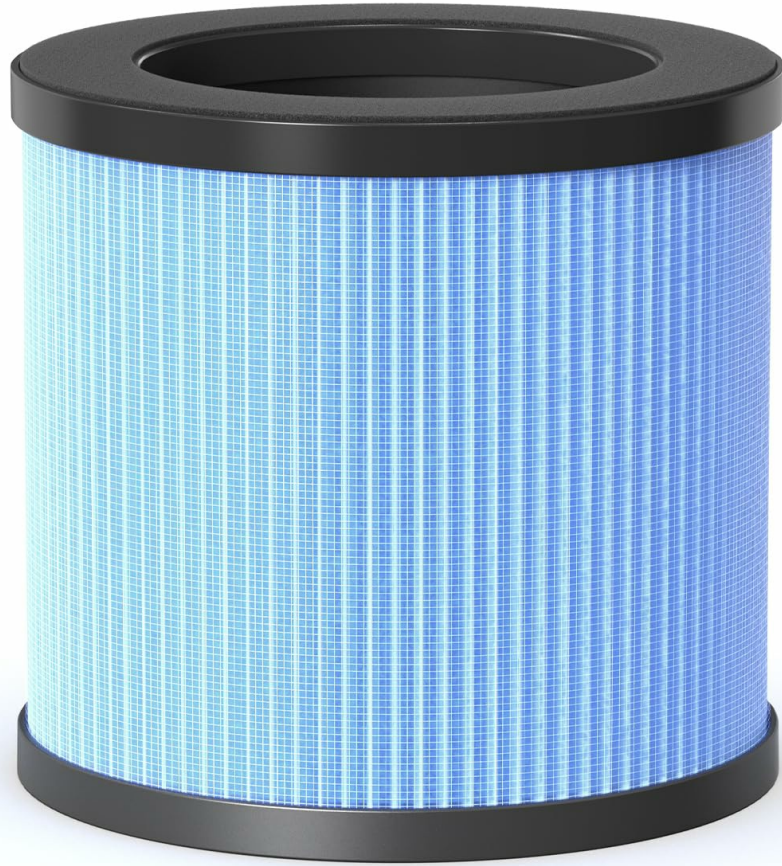


Image: The AROEVE JHD03W air purifier shown alongside its replacement filter, illustrating the product's primary components.

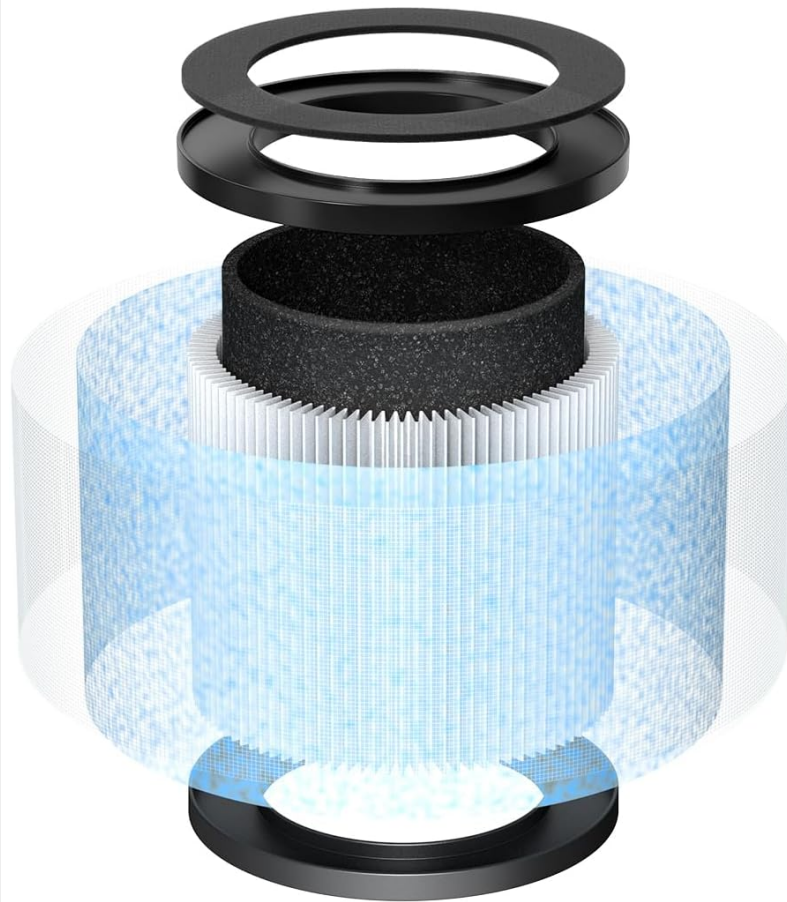
Multi-Layer Filtration System

The filter's multi-layer design ensures thorough air purification:

- **Pre-Filter:** Captures large particles such as dust, lint, fibers, hair, and pet fur.
- **Antibacterial Filter (Silver Ion Layer):** Filters bacteria from the air.
- **Personal HEPA Filter:** Traps at least 97% of airborne particles 0.3 microns in size, including fine dust, smoke particles, pollen, and pet dander.
- **Activated Carbon Filter:** Physically adsorbs smoke, odors, and fumes, reducing household, kitchen, and pet odors, as well as volatile organic compounds (VOCs).

Multi-layer of Defense

The 4-stage filter and 360° air intake provide maximum filtration



Activated Carbon Filter

Physically adsorbs smoke, odors, and fumes

Personal HEPA Filter

Traps at least 97% of airborne particles 0.3 microns in size, including fine dust, smoke particles, pollen, and pet dander

Antibacterial Filter

Filters bacteria from the air

Pre-Filter

Captures large particles such as dust, lint, fibers, hair, and pet fur

Image: A detailed diagram illustrating the four distinct layers of the AROEVE JHD03W replacement filter and their respective functions.

Removes 99.95% of harmful particles in the air

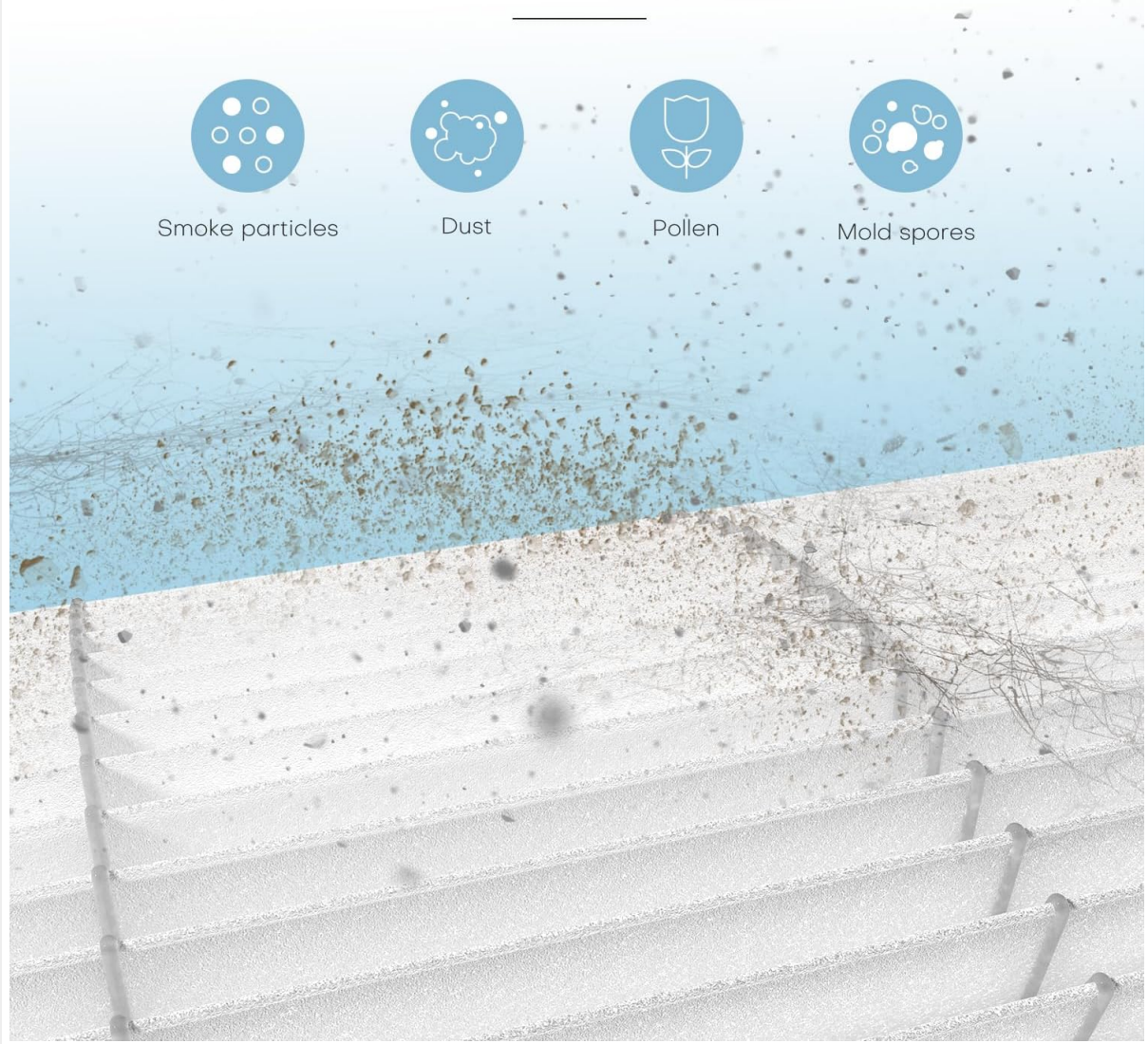


Image: Visual representation of various harmful particles, including smoke, dust, pollen, and mold spores, that the filter is designed to remove from the air.

Upgraded Antibacterial Layer

Further upgraded from the original filter with the addition of an antibacterial layer

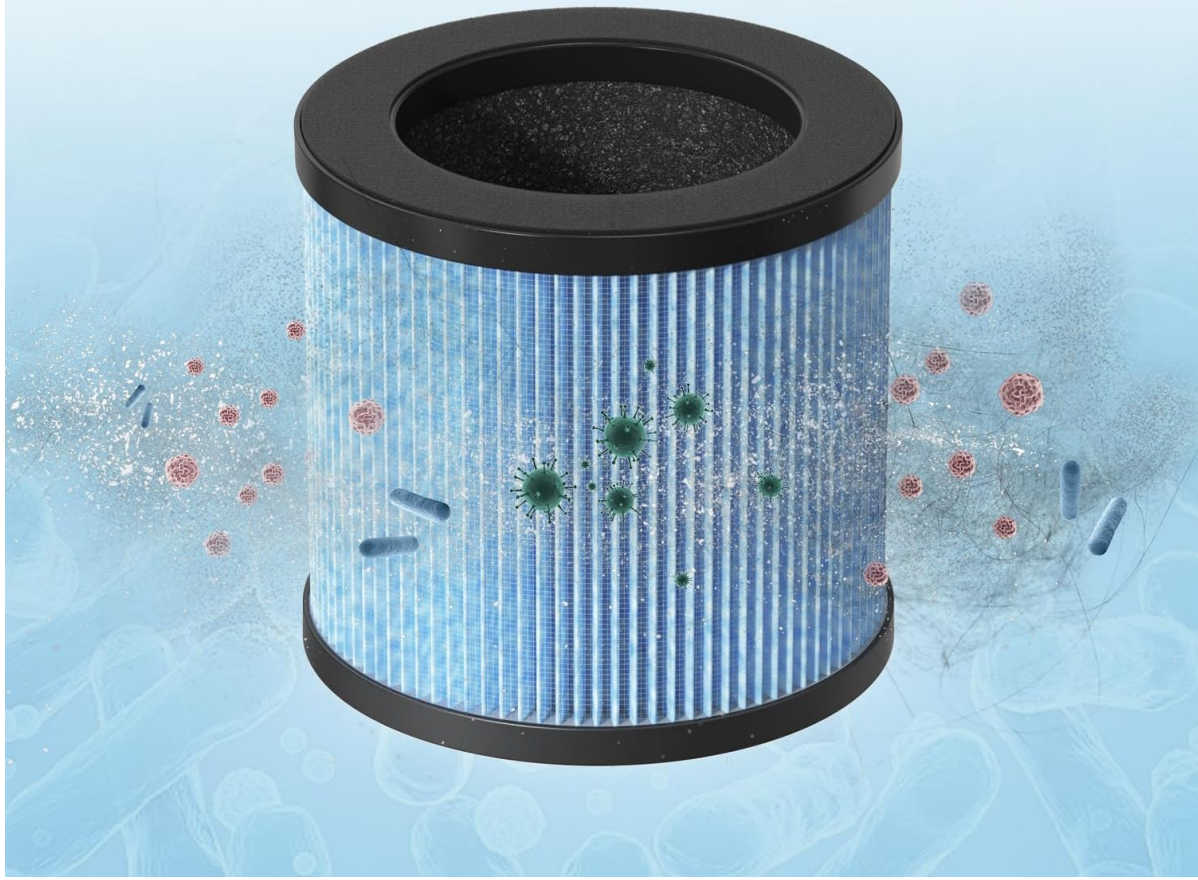


Image: Close-up view of the AROEVE JHD03W filter, highlighting the upgraded antibacterial layer designed to combat airborne bacteria.

INSTALLATION INSTRUCTIONS

Replacing the Filter

The 360-degree filter is designed for tool-free replacement. Follow these steps to install or replace the filter:

1. **Step 1:** Turn the air purifier upside down. Rotate the filter cover counter-clockwise to unlock and remove it.
2. **Step 2:** Remove the old filter (if applicable) and dispose of it properly. Unpack the new AROEVE JHD03W replacement filter from its protective plastic bag.
3. **Step 3:** Insert the new filter into the air purifier base. Ensure it is seated correctly.
4. **Step 4:** Place the filter cover back onto the base and rotate it clockwise until you hear a "click," indicating it is securely locked.

Easy to Install

We recommend cleaning the pre-filter ever 2-4 weeks
and replacing the filter every 3-6 months

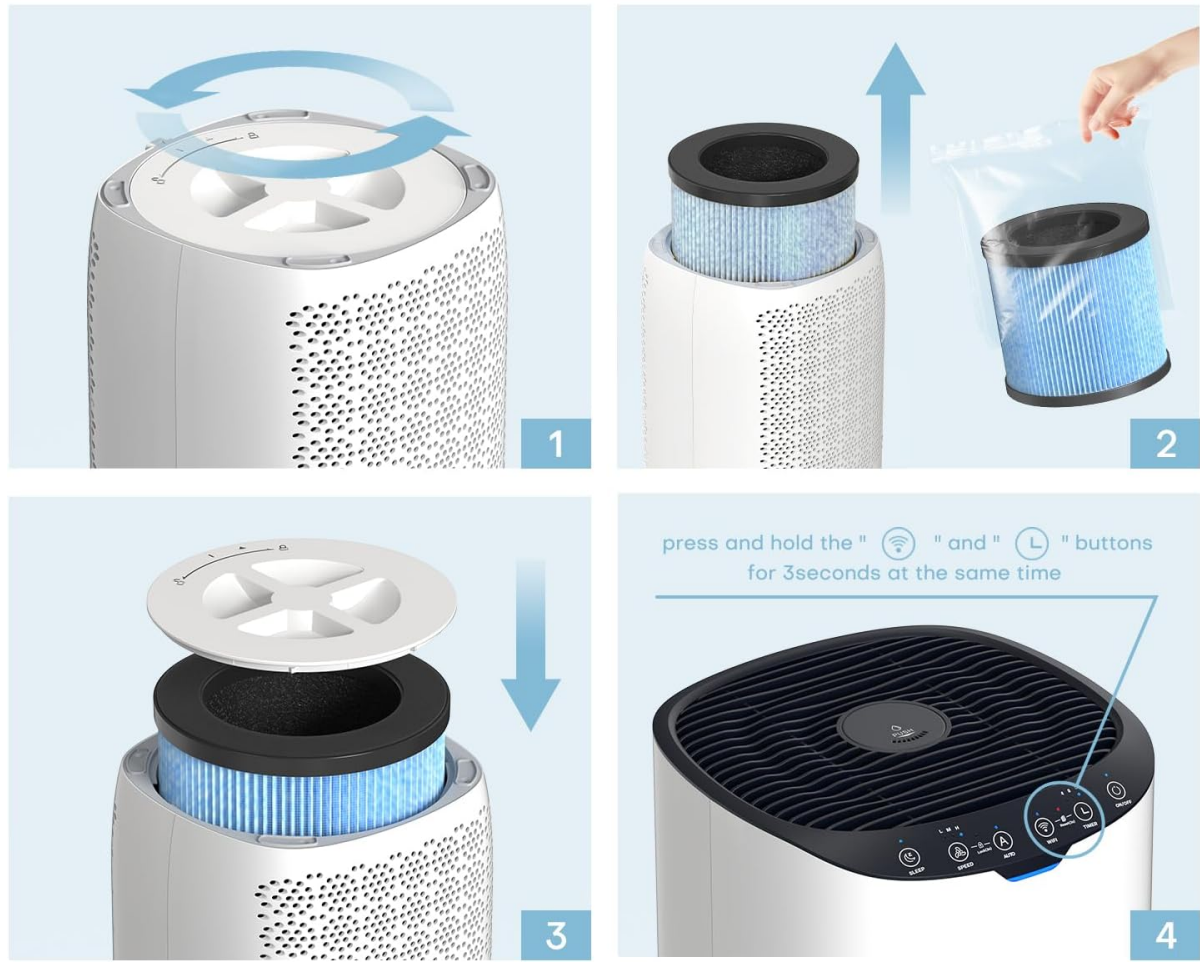


Image: A four-step visual guide demonstrating the process of replacing the AROEVE JHD03W air purifier filter, from opening the base to securing the new filter.

OPERATION

This document pertains to the replacement filter. For detailed operating instructions of your AROEVE air purifier, please refer to the air purifier's specific user manual.

Resetting the Filter Indicator

After replacing the filter, it may be necessary to reset the filter replacement indicator on your air purifier. To do this, press and hold the "WiFi" and "Timer" buttons simultaneously for 3 seconds. Refer to your air purifier's manual for specific button locations and confirmation of the reset process.

MAINTENANCE

Filter Replacement Schedule

For optimal performance and air quality, it is recommended to replace the AROEVE JHD03W filter every 3 to 6 months. Actual replacement frequency may vary depending on air quality, usage duration, and environmental factors.

Pre-filter Cleaning

The pre-filter component of the 4-in-1 filter can be cleaned periodically to extend the life of the main filter. It is recommended to clean the pre-filter every 2-4 weeks. Gently vacuum or brush off accumulated dust and debris from the pre-filter surface. Ensure the filter is completely dry before reinstallation.

TROUBLESHOOTING

If you experience issues after replacing the filter, consider the following:

- **Airflow Reduction:** Ensure the filter is correctly seated and the filter cover is securely locked. Check for any obstructions around the air intake or outlet of the air purifier.
- **Unusual Odors:** If new odors are present, verify that the new filter was removed from its plastic packaging before installation.
- **Filter Indicator Light:** If the filter replacement indicator remains on after installation, follow the instructions in the "Resetting the Filter Indicator" section or consult your air purifier's user manual.
- **General Performance Issues:** For any other operational concerns, refer to the user manual of your specific AROEVE air purifier model.

SPECIFICATIONS

Model	JHD03W
Filtration System	4-in-1 (Pre-filter, Silver Ion Layer, HEPA Filter, Activated Carbon Filter)
Dimensions (Product)	18 x 19 x 18 cm; 450 g (approximate)
Compatibility	AROEVE Air Purifiers requiring JHD03W filter