



Manuals.plus /

› JeaTone /

› JeaTone Smart Wireless Dog Doorbell User Manual - Model 1CM2

JeaTone 1CM2

JeaTone Smart Wireless Dog Doorbell User Manual

Model: 1CM2

INTRODUCTION

Thank you for choosing the JeaTone Smart Wireless Dog Doorbell. This device is designed to assist in potty training your dog by providing a clear signal when your pet needs to go outside. It features a wireless transmitter for your dog to activate and a receiver that alerts you with sound and light. Please read this manual thoroughly to ensure proper setup and operation.



Image: The JeaTone Smart Wireless Dog Doorbell system, showing the receiver and transmitter, designed for easy dog training.

SETUP INSTRUCTIONS

Follow these steps to set up your JeaTone Smart Wireless Dog Doorbell.

1. Receiver Placement and Power

1. **Plug in the Receiver:** Insert the receiver into a standard electrical outlet in a location where you can easily hear the alerts, such as your living room or kitchen.

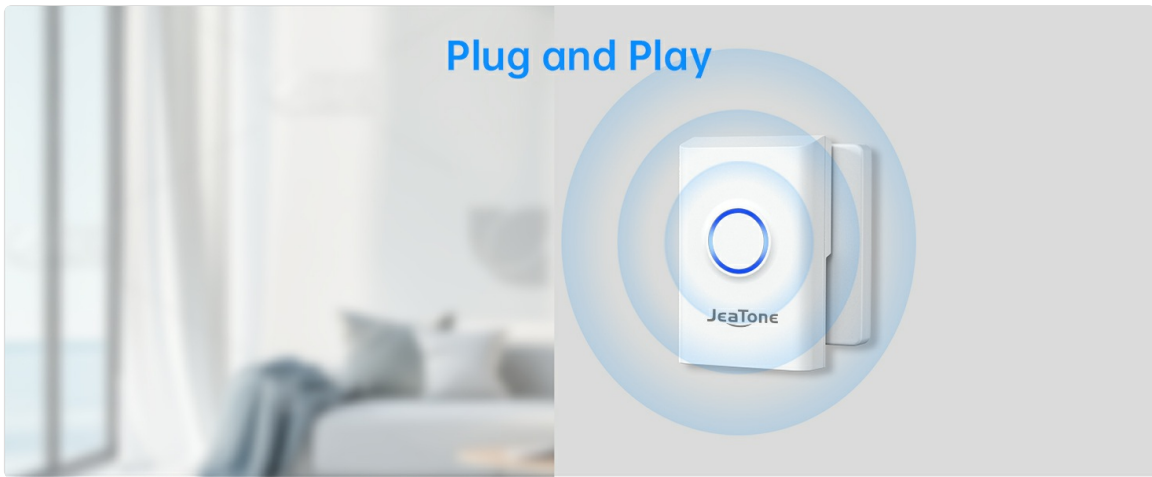


Image: The receiver unit plugged into a wall socket, ready for operation.

2. Transmitter Installation

2. **Attach the Transmitter:** Use the provided Velcro adhesive to attach the wireless transmitter to a wall or door at a height easily accessible by your dog. Ensure the surface is clean and dry before application.



Image: Step-by-step guide for installing the wireless transmitter using Velcro.

3. Initial Configuration

3. **Select Ringtone:** Press the "Music Button" on the side of the receiver to cycle through the 58 available ringtones. Stop when you find your preferred melody.
4. **Choose Notification Mode:** Press the "Mode Button" on the receiver to switch between the 4 notification modes: Light On + Music, Light Flashes + Music, Music On, or Light Flashes Only.

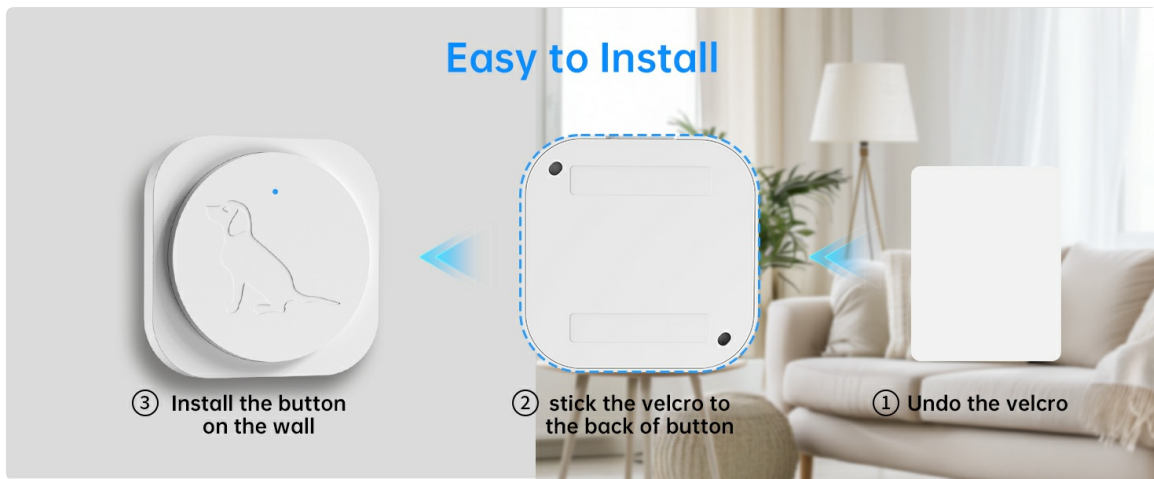


Image: Visual guide for plugging in the receiver, selecting music, and choosing notification modes.

OPERATING INSTRUCTIONS

Once set up, the JeaTone Smart Wireless Dog Doorbell is ready for use.

1. Dog Training

1. **Introduce the Transmitter:** Encourage your dog to touch the transmitter with their paw or nose. When they do, immediately reward them with praise and a treat, then take them outside.
2. **Consistency is Key:** Repeat this process consistently. Your dog will associate touching the bell with going outside.

No More Whining
No More Door Scratching
No More Barking

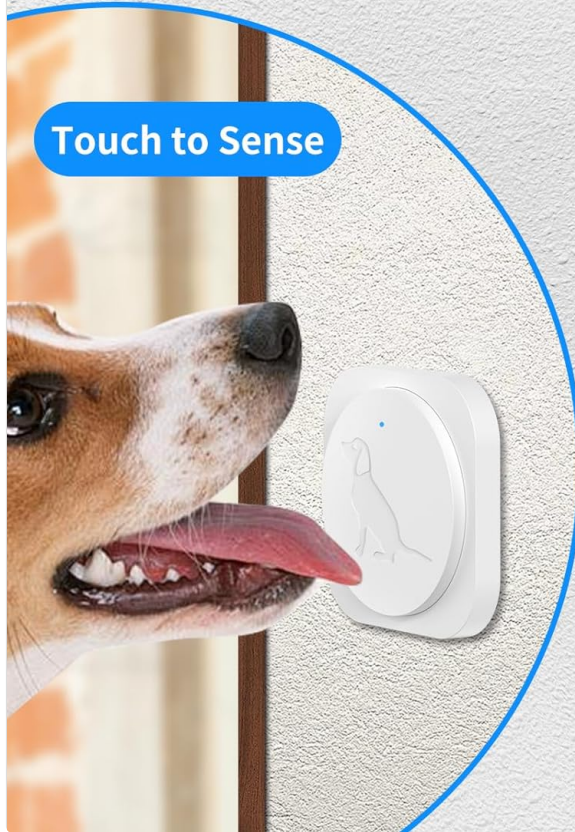


Image: A dog interacting with the doorbell transmitter, demonstrating its intended use for signaling outdoor needs.

2. Notification Modes and Volume

The receiver offers various ways to alert you:

- **Light On + Music:** Both visual and auditory alerts.
- **Light Flashes + Music:** Flashing light and sound.
- **Music On:** Auditory alert only.
- **Light Flashes Only:** Visual alert only, useful for quiet environments or hearing-impaired users.

4 NOTIFICATION MODES



Image: The four notification modes, showing how the doorbell can alert users without disturbing sleep. The volume can be adjusted between 25-85dB to suit your environment. The system also features a power failure memory, retaining your selected ringtone and mode after a power outage.

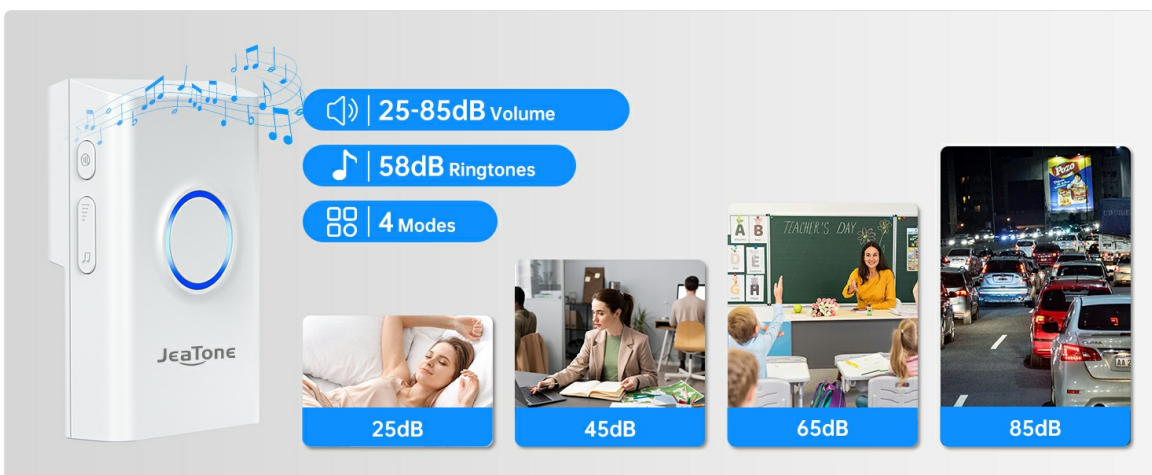


Image: Volume and ringtone options, demonstrating adaptability to various noise levels.

3. Wireless Range

The doorbell system offers an extra-long wireless range of up to 500 feet (150 meters), ensuring a reliable signal throughout most homes without interference from other devices.

500FT/150M Wireless Range



Image: Illustration of the doorbell's extensive wireless range.

MAINTENANCE

Proper maintenance ensures the longevity and optimal performance of your doorbell system.

1. Transmitter Battery

The transmitter is powered by a 12V 23A alkaline battery, designed for a life of up to 3 years. When the transmitter's indicator light no longer illuminates or the signal becomes unreliable, it's time to replace the battery.

- To replace the battery, carefully open the transmitter casing.
- Remove the old battery and insert a new 12V 23A alkaline battery, ensuring correct polarity.
- Securely close the casing.

2. Weather Resistance

The transmitter is IP65 waterproof, meaning it is protected against dust and low-pressure water jets. While it can withstand outdoor conditions, avoid submerging it in water or exposing it to extreme weather for prolonged periods.



Image: The doorbell transmitter demonstrating its weatherproof capabilities in a rainy outdoor setting.

3. Cleaning

Wipe both the receiver and transmitter with a soft, dry cloth. Do not use abrasive cleaners or solvents.

TROUBLESHOOTING

If you encounter issues with your JeaTone Smart Wireless Dog Doorbell, refer to the following common problems and solutions:

Problem	Possible Cause	Solution
Receiver does not ring	Receiver not plugged in or no power. Transmitter battery low or dead. Transmitter out of range.	Ensure receiver is securely plugged into a live outlet. Replace transmitter battery. Move receiver closer to transmitter or remove obstructions.
Bell sounds stuck or repeats	Interference or temporary signal issue.	Unplug the receiver for 30 seconds and plug it back in. Ensure no other wireless devices are causing interference nearby.
Short wireless range	Obstructions (thick walls, metal objects). Interference from other electronics.	Relocate the receiver or transmitter to minimize obstructions. Avoid placing near large metal objects or strong electromagnetic fields.
Cannot change ringtone/mode	Buttons not pressed correctly.	Ensure you are pressing the correct "Music Button" or "Mode Button" firmly. Refer to the "Initial Configuration" steps.

SPECIFICATIONS

Brand Name	JeaTone
Model Name	1CM2
Item Model Number	1CM2
Item Weight	6.7 ounces
Item Package Dimensions (L x W x H)	4.37 x 3.54 x 3.46 inches
Color	White
Included Components	Dog Door Bell (Receiver and Transmitter)
Specific Uses for Product	Dog Training Potty
Wireless Range	Up to 500 feet (150 meters)
Ringtones	58 options
Notification Modes	4 (Light On + Music, Light Flashes + Music, Music On, Light Flashes Only)
Transmitter Battery	12V 23A Alkaline (up to 3-year life)
Waterproof Rating	IP65

Product Size

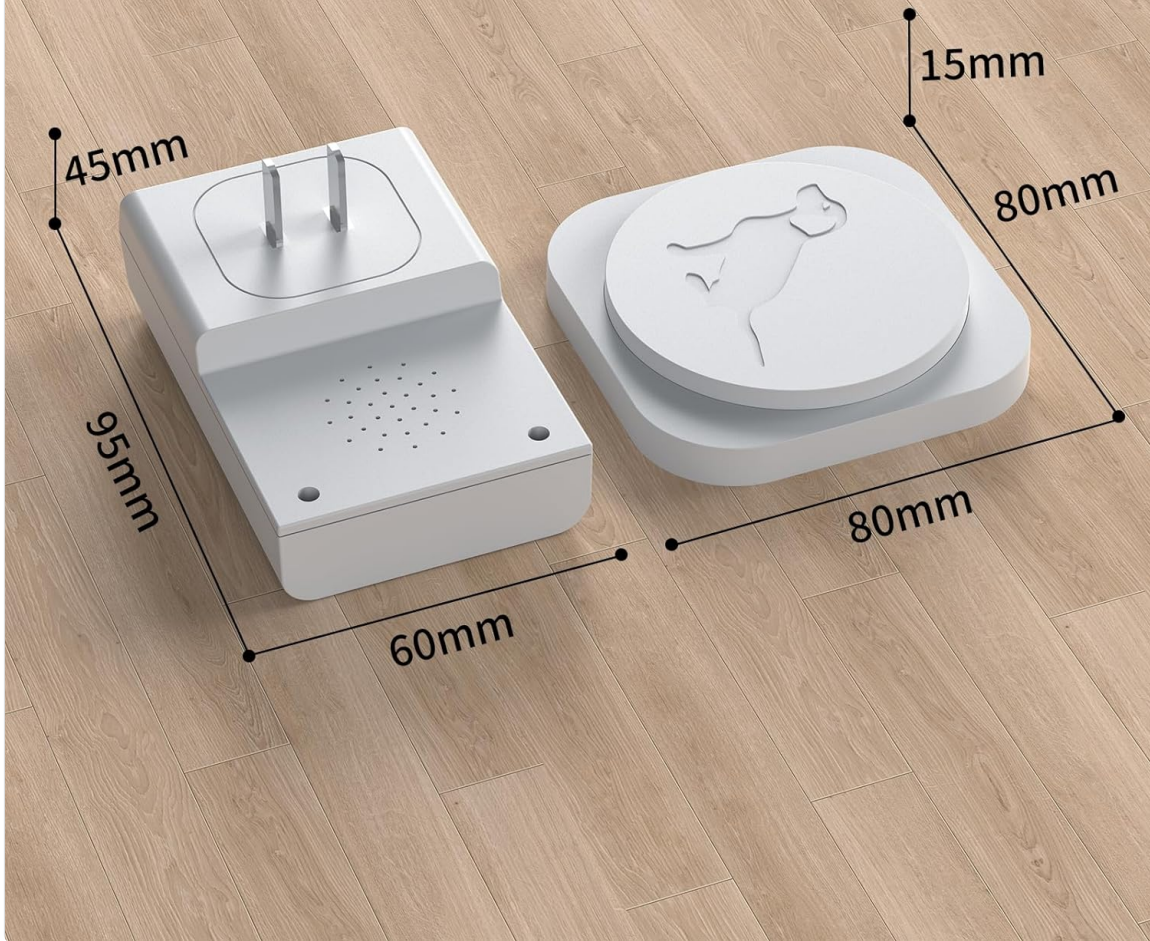


Image: Product dimensions for both the receiver and transmitter units.

WARRANTY INFORMATION

The JeaTone Smart Wireless Dog Doorbell comes with a **1-year warranty** from the date of purchase. This warranty covers manufacturing defects and malfunctions under normal use. It does not cover damage caused by misuse, accidents, unauthorized modifications, or improper installation.

Please retain your proof of purchase for warranty claims.

CUSTOMER SUPPORT

For further assistance, technical support, or warranty inquiries, please contact JeaTone customer service. Refer to the product packaging or the official JeaTone website for the most current contact information.

When contacting support, please have your product model (1CM2) and purchase details ready.

