



[Manuals.plus](#) /

› [MAXDONE](#) /

› MAXDONE Trail Camera, 4K 64MP, Solar Game Camera with 6000mAh Battery, Model CHD527 User Manual

MAXDONE CHD527

MAXDONE Trail Camera User Manual

MODEL: CHD527

1. Introduction

Thank you for choosing the MAXDONE Trail Camera. This manual provides detailed instructions for setting up, operating, and maintaining your camera. Please read this manual thoroughly before use to ensure optimal performance and longevity of your device. This camera is designed for wildlife monitoring, outdoor scouting, and home security applications, featuring 4K video, 64MP photos, solar charging, and app control.

2. Package Contents

Verify that all items listed below are included in your package:

- MAXDONE Trail Camera (Model CHD527)
- Detachable Solar Panel
- USB Type-C Charging Cable
- Mounting Strap
- Threaded Tripod
- 32GB Micro SD Card
- Screw Accessories
- Instruction Manual (this document)

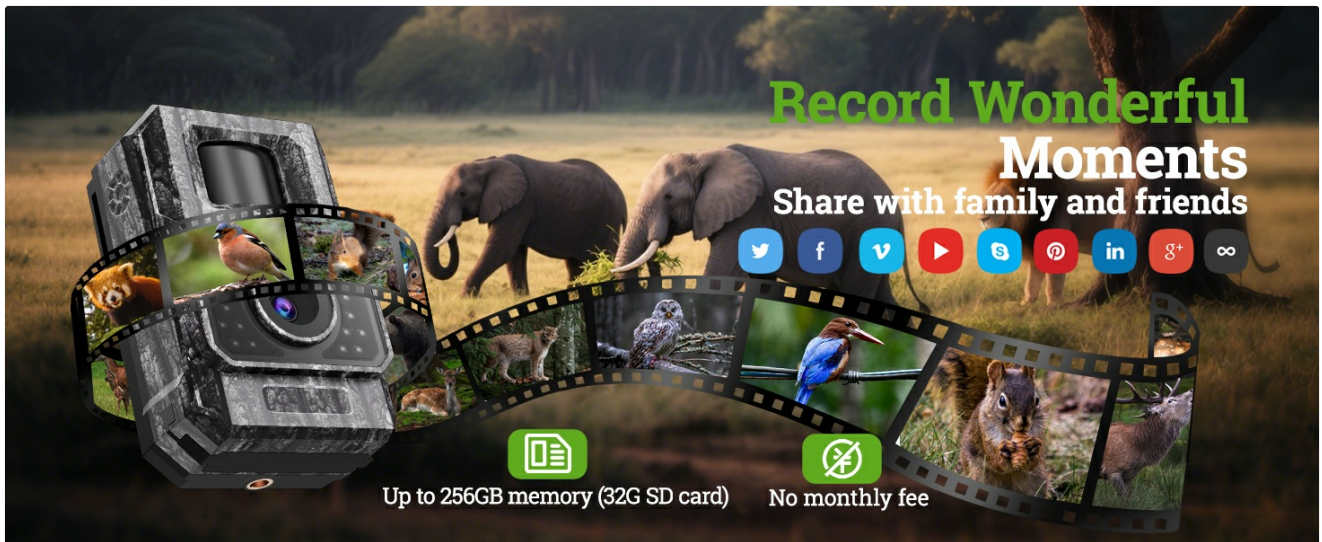


Image: Contents of the MAXDONE Trail Camera package, including the camera, solar panel, cables, mounting accessories, SD card, and manual.

3. Product Overview

The MAXDONE Trail Camera is equipped with advanced features for reliable outdoor monitoring:

- **High Resolution:** Captures 4K Ultra HD videos and 64MP still images.
- **Solar Power:** Features a detachable solar panel and a 6000mAh rechargeable lithium battery for extended operation.
- **Night Vision:** Infrared technology provides clear footage up to 65 feet in low-light conditions without disturbing wildlife.
- **Fast Trigger Speed:** Responds to motion in 0.1 seconds.
- **Wide-Angle Detection:** 130° detection angle for comprehensive coverage.
- **App Control:** Connects via WiFi and Bluetooth to the 'TrailCamGO' app for remote settings adjustment and footage download.
- **Durable Design:** IP66 waterproof rating ensures reliable performance in various weather conditions.



Image: Front view of the MAXDONE Trail Camera with its detachable solar panel, a micro SD card, and a USB-C charging cable, alongside a smartphone displaying the camera's app interface.

4. Setup

4.1 Battery and SD Card Installation

1. **Charge the Battery:** The camera is equipped with a 6000mAh rechargeable lithium battery. Before first use, fully charge the camera using the provided USB Type-C cable connected to a power source, or by exposing the solar panel to direct sunlight.
2. **Insert SD Card:** Open the camera's protective cover. Locate the Micro SD card slot. Insert the included 32GB Micro SD card (or another compatible card up to 256GB, Class 10 or higher recommended) with the gold contacts facing the correct direction until it clicks into place.
3. **Close Cover:** Ensure the protective cover is securely closed to maintain the IP66 waterproof rating.

4.2 App Download and Initial Connection

1. **Download App:** Search for 'TrailCamGO' in your smartphone's app store (iOS or Android) and install it.
2. **Power On Camera:** Turn on the camera using the power switch.
3. **Connect via App:** Open the 'TrailCamGO' app. Follow the in-app instructions to connect to your camera via WiFi and Bluetooth. The camera creates its own hotspot for connection. The maximum connection range is 55 feet, with a recommended distance of within 10 feet for stable connection.



Image: A smartphone displaying the 'TrailCamGO' app interface, showing a detection area customization screen with a leopard image, illustrating the camera's app control capabilities.

5. Operating Instructions

5.1 Basic Operation

- **Power On/Off:** Use the physical power switch on the camera to turn it on or off.
- **Mode Selection:** The camera supports various shooting modes, configurable via the 'TrailCamGO' app.

5.2 Shooting Modes

Configure these modes through the 'TrailCamGO' app:

- **Motion Detection:** Captures photos or videos when motion is detected. Features a 0.1-second trigger speed.
- **Timed Capture:** Takes photos or videos at set intervals, regardless of motion.
- **Time-Lapse Photography:** Captures a series of images over a long period to create a time-lapse video.
- **5-Shot Burst Mode:** Captures multiple photos in quick succession when triggered.



Image: Diagram illustrating the three primary shooting modes: Motion Detection (triggered by movement), Timed Capture (scheduled intervals), and Time-Lapse Photography (sequential images over time).

5.3 Customizing Settings via App

The 'TrailCamGO' app allows for comprehensive customization:

- **Detection Zones:** Customize specific areas within the camera's field of view to reduce false triggers.
- **Video Length & Resolution:** Adjust video duration and quality (4K, 2K, 1080P, 720P).
- **Photo Resolution:** Select desired photo quality (up to 64MP).
- **Audio Recording:** Enable or disable audio capture for videos.
- **Timestamps:** Add customizable timestamps to images and videos.
- **Motion Sensitivity:** Adjust the sensitivity of the motion sensor.
- **Operating Hours:** Set specific times for the camera to be active.

5.4 Viewing and Downloading Footage

You can access your captured media through three methods:

1. **Via 'TrailCamGO' App:** Connect your phone to the camera's WiFi/Bluetooth hotspot. Browse the gallery and download photos/videos directly to your phone without removing the SD card.
2. **USB Connection:** Connect the camera to a computer using the provided USB Type-C cable. The camera will appear as a removable drive, allowing you to transfer files.
3. **SD Card Reader:** Remove the Micro SD card from the camera and insert it into a compatible card reader connected to a computer or other device.

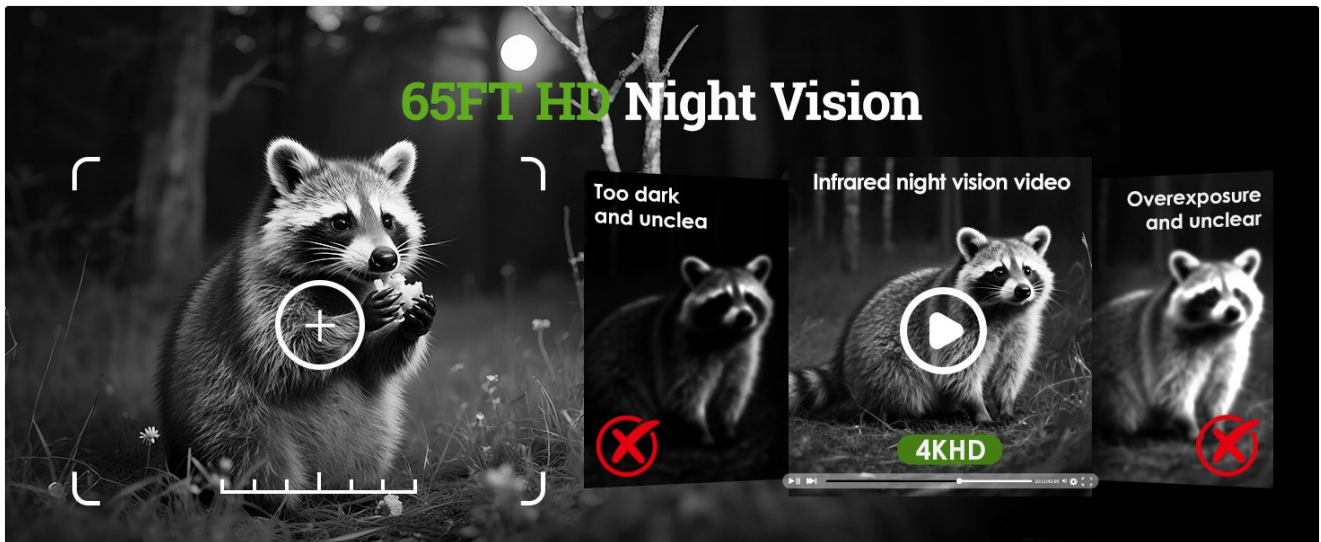


Image: Diagram illustrating three methods for downloading photos and videos from the trail camera: directly to a phone via WiFi/Bluetooth, to a computer via USB cable, or by using an SD card reader.

6. Charging and Battery Management

The MAXDONE Trail Camera is designed for extended operation with its 6000mAh rechargeable lithium battery and versatile charging options:

- **Solar Charging:** The detachable solar panel efficiently charges the internal battery when exposed to sunlight. Adjust the panel's angle to maximize sun exposure, especially considering seasonal changes.
- **Type-C Charging:** Use the provided USB Type-C cable to charge the camera from a wall adapter, power bank, or computer.
- **Battery Power:** The high-capacity internal battery provides long-term continuous use, reducing the need for frequent battery replacements.

Solar-powered endurance lasts longer

no more worries about being out in the wild without power

MAXDONE



Solar Power



Power Bank



Outdoor Power Source



Outlet

Other



Battery-Powered Only



Power When Away, Cannot Be Used



No Power on Rainy Days, Cannot Replace Batteries



No power, but forgot to bring the batteries

Image: Comparison of MAXDONE's solar-powered endurance with traditional battery-only cameras, showing MAXDONE charging via solar, power bank, outdoor power source, and outlet.

7. Mounting

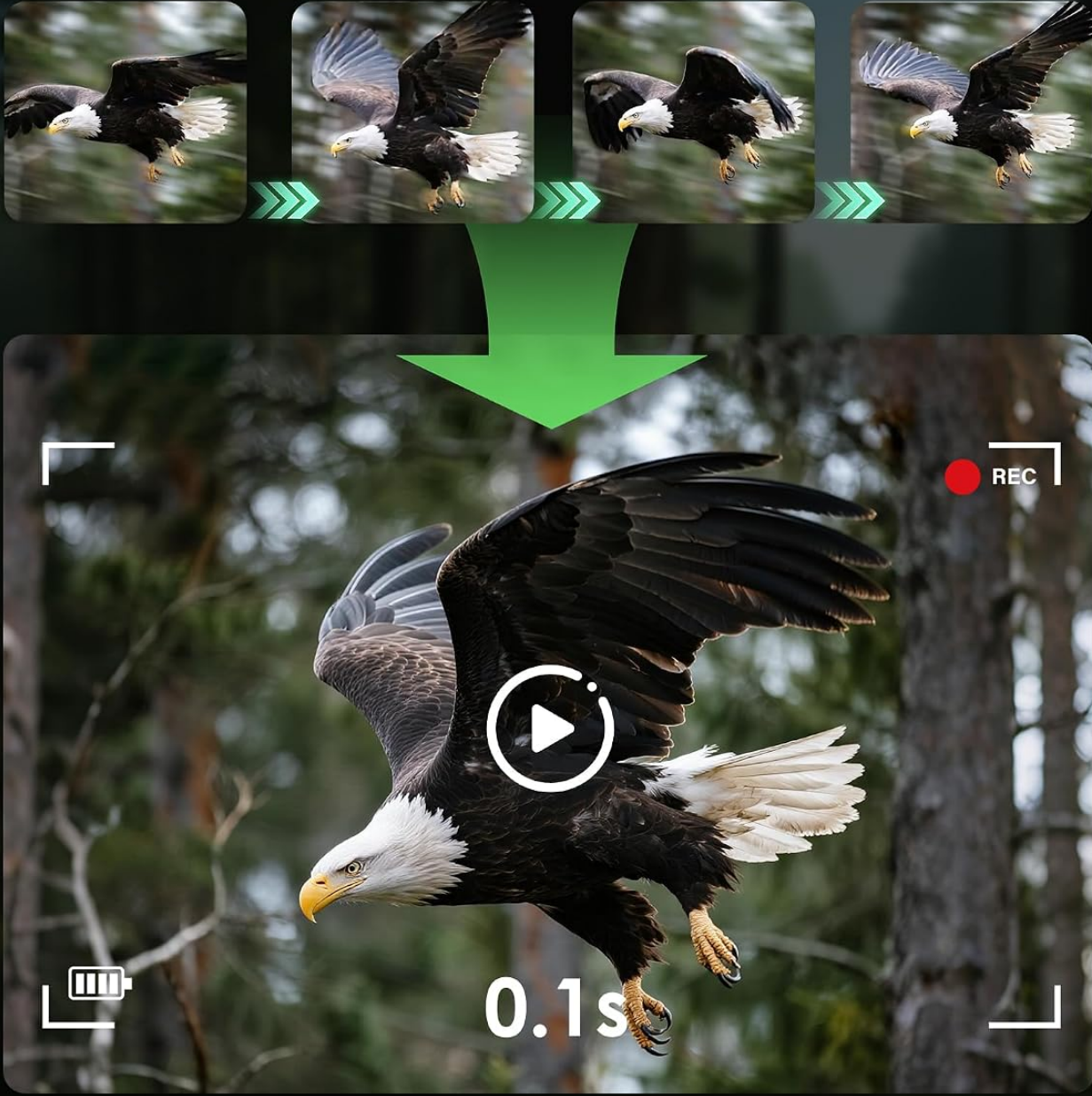
Proper mounting ensures optimal camera performance and solar charging efficiency.

1. **Choose Location:** Select a location that provides a clear view of the desired monitoring area and allows the solar panel to receive ample direct sunlight throughout the day.
2. **Attach Camera:** Use the included mounting strap to secure the camera to a tree or post. Alternatively, use the

threaded tripod for flexible positioning.

3. **Adjust Solar Panel:** The solar panel is detachable and adjustable. Position it to face the sun directly, minimizing any potential blockage from foliage or structures.
4. **Test Coverage:** After mounting, use the 'TrailCamGO' app to check the camera's field of view and adjust detection zones as needed.

⚡ 0.1s Fast Trigger Speed



The image illustrates the camera's fast trigger speed. It features a sequence of four images showing a bald eagle in flight, with green arrows indicating a fast trigger speed. Below this is a large image of the eagle in flight, framed like a camera viewfinder, with a play button icon and '0.1s' text overlaid. The viewfinder also shows a 'REC' indicator and a battery level icon.

Image: The MAXDONE Trail Camera mounted on a tree with its adjustable solar panel positioned to receive sufficient sunlight. Examples show mounting on eaves, trees, and walls, emphasizing sun exposure.

8. Maintenance

Regular maintenance helps ensure the longevity and optimal performance of your trail camera.

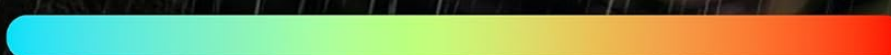
- **Clean Lens and Solar Panel:** Periodically wipe the camera lens and solar panel with a soft, clean cloth to remove dirt, dust, or debris that could affect image quality or charging efficiency.
- **Check Seals:** Ensure all rubber seals and the protective cover are properly closed and free from damage to maintain the IP66 waterproof rating.
- **Monitor Battery:** Check the battery level regularly via the app, especially during periods of low sunlight or high activity.
- **SD Card Management:** Format the SD card periodically to prevent data corruption and ensure sufficient storage space. Back up important footage before formatting.

IP66 Waterproof+ Silicone Plug

Silicone soft plug waterproof

Available temperature range

-4F°



140F°

Image: The MAXDONE Trail Camera mounted on a tree in a rainy environment, highlighting its IP66 waterproof rating and silicone plug for port protection. The image also indicates an available temperature range of -4°F to 140°F.

9. Troubleshooting

If you encounter issues with your MAXDONE Trail Camera, refer to the following common problems and solutions:

Problem	Possible Cause	Solution
---------	----------------	----------

Problem	Possible Cause	Solution
Camera not powering on	Low battery; incorrect battery installation	Charge the battery fully; ensure battery is correctly inserted.
Poor image/video quality	Dirty lens; low light conditions; incorrect settings	Clean the lens; adjust camera placement for better light; check app settings for resolution.
App connection issues	Too far from camera; camera WiFi/Bluetooth off; app not updated	Move closer to the camera (within 10ft recommended); ensure camera is on; update 'TrailCamGO' app.
No motion detection	PIR sensor blocked; sensitivity too low; detection zone not set	Clear sensor area; increase motion sensitivity in app; configure detection zones.
SD card error	Card full; corrupted; incompatible	Format SD card (backup data first); try a different compatible SD card.

If the problem persists, please contact MAXDONE customer support for further assistance.

10. Specifications

Detailed technical specifications for the MAXDONE Trail Camera Model CHD527:

Feature	Specification
Model Name	CHD527
Maximum Webcam Image Resolution	64 MP
Video Capture Resolution	4K
Video Capture Format	MP4 (H.264 encoding)
Connectivity Technology	Wi-Fi, Bluetooth
Control Method	App (TrailCamGO)
Power Source	Battery Powered (6000mAh rechargeable lithium battery), Solar Charging, Type-C Charging
Flash Memory Supported Size Maximum	256 GB (32GB included)
International Protection Rating	IP66 (Waterproof)
Low Light Technology	Night Color (Infrared Night Vision up to 65FT)
Alert Type	Motion Activated
Trigger Speed	0.1 seconds

Feature	Specification
Wide Angle	130°
Item Dimensions L x W x H	3.94 x 1.7 x 2.64 inches
Item Weight	1.12 pounds
Operating Temperature Range	-4°F to 140°F

11. Warranty and Support

The MAXDONE Trail Camera Model CHD527 comes with a **1-Year Limited Warranty** from the date of purchase.

This warranty covers manufacturing defects and workmanship under normal use.

For warranty claims, technical support, or any questions regarding your product, please contact MAXDONE customer service through the retailer's platform or visit the official MAXDONE website for contact information.

Please have your purchase receipt and product model number (CHD527) ready when contacting support.