



Manuals.plus /

› PULWTOP /

› PULWTOP BD242A Triple Display Docking Station with Dual Stand User Manual

PULWTOP BD242A

PULWTOP BD242A Triple Display Docking Station User Manual

Model: BD242A

1. INTRODUCTION

This manual provides detailed instructions for setting up, operating, and maintaining your PULWTOP BD242A Triple Display Docking Station. This 19-in-1 docking station is designed to expand your laptop's connectivity and display capabilities, supporting up to three 4K monitors simultaneously. Please read this manual thoroughly before use to ensure optimal performance and safety.

2. PACKAGE CONTENTS

Verify that all items listed below are included in your package:

- PULWTOP BD242A Docking Station
- 72W DC Power Adapter & Cable
- USB-C to USB-C Cable with USB-A Adapter
- Multilingual User Manual

Package Contents

What Will You Get



1. Package Box
2. Multilingual User Manual
3. PULWPTOP Docking Station
4. 72W DC Power Adapter & Cable
5. USB C to C Cable with USB A Adapter

Image: The package contents, including the docking station, power adapter, USB-C cable, and user manual.

3. PHYSICAL LAYOUT AND PORT OVERVIEW

The PULWPTOP BD242A docking station features a comprehensive array of ports and a dual stand design for efficient workspace management.

19-in-1 Laptop Docking Station with Dual Stand & Triple 4K Monitor

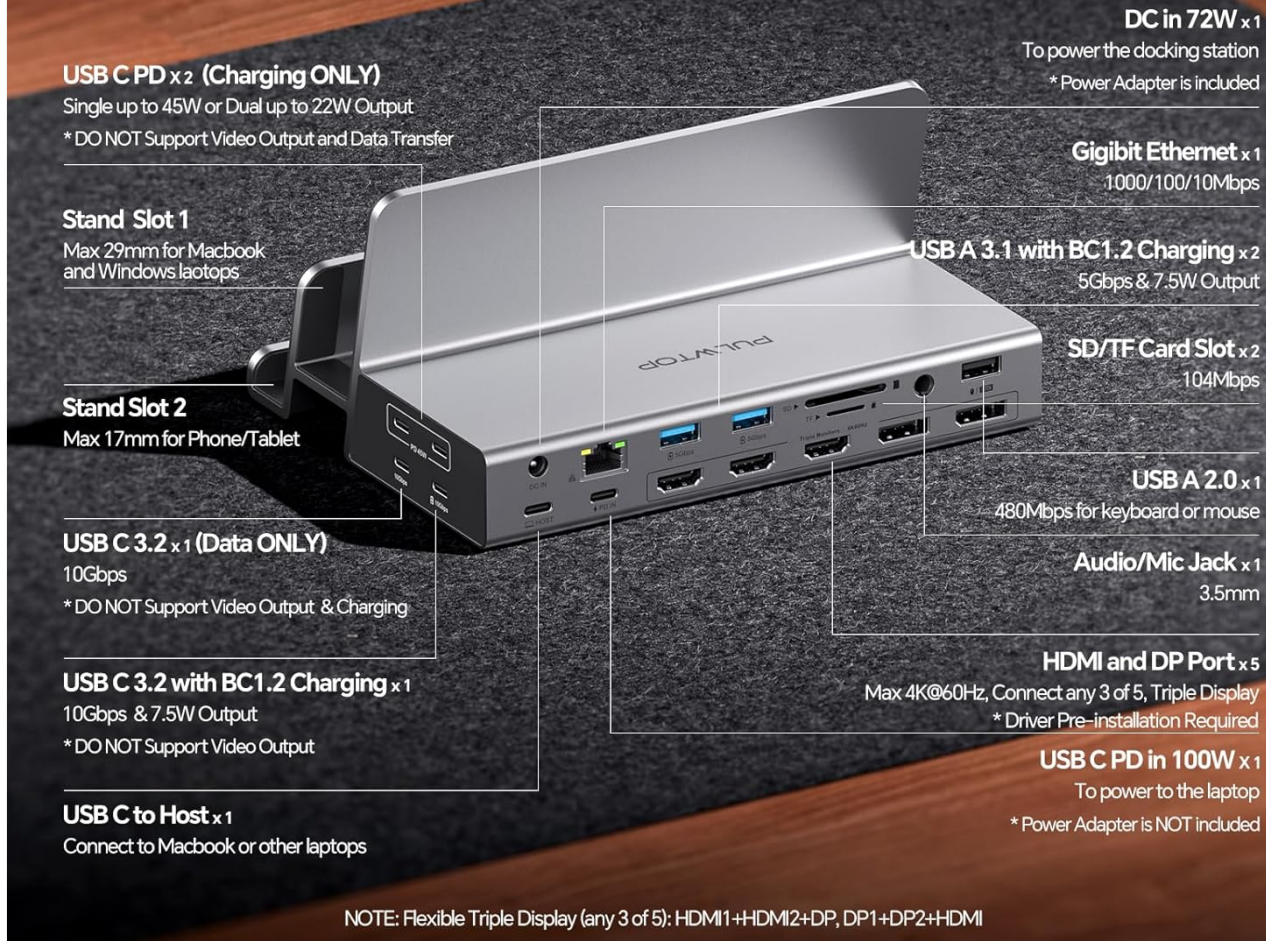


Image: A detailed diagram illustrating the 19 ports available on the docking station.

Front Panel Ports:

- **2 x USB-C PD Output (Charging ONLY):** Up to 45W for single port, or 22W per port when two are used. Do not support video output or data transfer.
- **Dual Stand Slots:** Max 29mm for laptops (MacBook/Windows) and Max 17mm for phones/tablets.

Rear Panel Ports:

- **DC IN (72W):** Connect the included power adapter to power the docking station.
- **USB-C to Host:** Connects to your laptop (MacBook or other laptops).
- **PD IN (100W Max):** Connect an external PD adapter (not included) to charge your laptop.
- **Gigabit Ethernet:** 1000/100/10Mbps network connection.
- **USB-C 10Gbps (Data ONLY):** High-speed data transfer.
- **USB-C 10Gbps with 7.5W:** High-speed data transfer and charging.
- **2 x USB-A 5Gbps with 7.5W:** Data transfer and charging for peripherals.
- **USB-A 2.0:** For keyboard, mouse, or other low-power devices.
- **SD/TF Card Slots:** Simultaneous reading and writing up to 104Mbps.

- **3.5mm Audio/Mic Jack:** For headphones or speakers.
- **3 x HDMI 4K@60Hz:** Video output ports.
- **2 x DisplayPort 4K@60Hz:** Video output ports.

4. SETUP INSTRUCTIONS

4.1 Power Connection

Connect the included 72W DC power adapter to the **DC IN** port on the docking station. This is essential for the docking station to function.

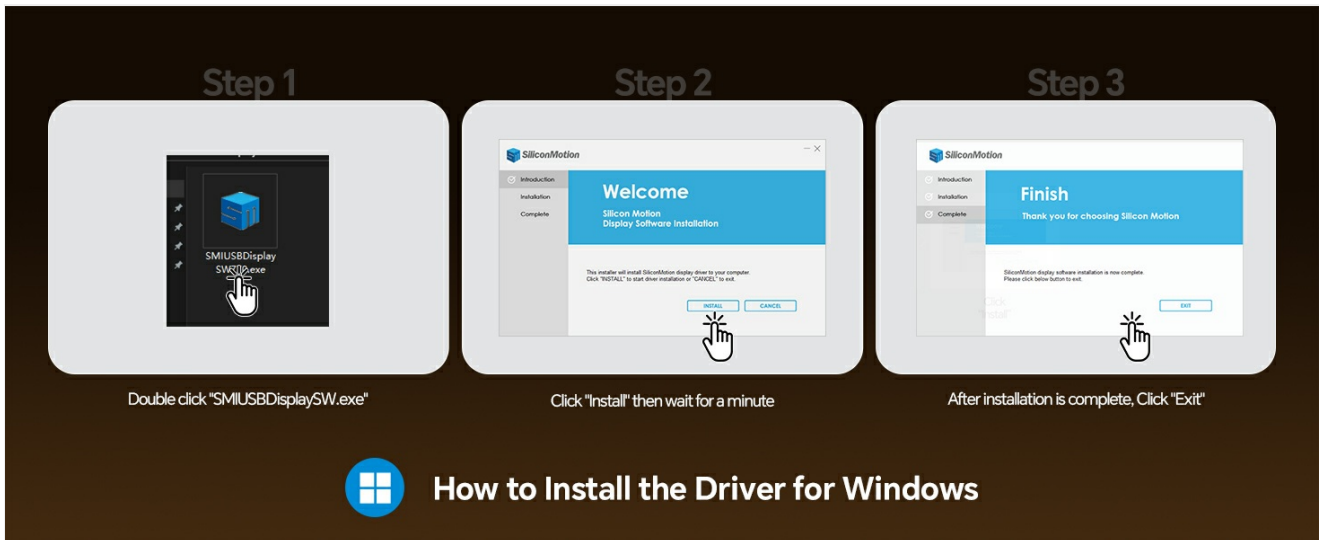


Image: Illustration of connecting the 72W DC power adapter to the docking station. An optional 100W PD adapter can be connected to the PD IN port to charge the laptop.

4.2 Host Connection

Connect your laptop to the docking station using the **USB-C to Host** cable. If your laptop only has USB-A ports, use the provided USB-A adapter.

4.3 Driver Installation (Required for Display Functionality)

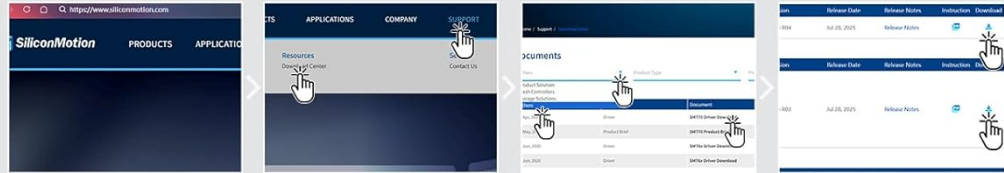
The PULWTOP BD242A docking station requires the installation of a Silicon Motion driver for full display functionality, especially for macOS and multi-monitor setups. Please follow the steps below:

1. Visit the official Silicon Motion website: www.siliconmotion.com
2. Navigate to **SUPPORT > Download Center**.
3. Under **Product Solution**, select **Others**.
4. Locate and download the **SM770 Driver Download** for your operating system (Windows or macOS).

Drive Installation

Please Install the SiliconMotion Driver after Downloading

Driver Download Steps



Go to the official website

Click "**Support**" at the top, then click "**Download center**"

Select "**Other**" in the filter and click "**SM770 Driver Download**"

Click "**Download**" under the corresponding System Option



Installation Steps for Windows



Double click "**SMUSBDisplaySW.exe**"

Click "**Install**" then wait for a minute

After installation is complete, click "**Exit**"



Installation Steps for MacOS



Drag the software icon to the bottom

Open the software then open the "**System Settings**"

Click "**Privacy & Security**" and enter the "**Screen & System Audio Recording**"

Open the button at the bottom of "**macOS InstantView**" to **Allow** the screen recording

Note: Screen recording is ONLY for screen expansion. We CANNOT collect any content information through this Dock and Software.

Image: Visual guide for downloading the Silicon Motion driver from the official website and installation steps for both Windows and macOS.

For Windows OS:

1. Double-click the downloaded **SMUSBDisplaySW.exe** file.
2. Click **Install** and wait for the installation to complete.
3. Click **Exit** when finished.

Your browser does not support the video tag.

Video: A step-by-step guide demonstrating the Silicon Motion Driver Installation for Windows OS.

For macOS:

1. Drag the **macOS InstantView** application icon to the Applications folder.
2. Open the application, then go to **System Settings > Privacy & Security**.
3. Under **Screen & System Audio Recording**, grant access to **macOS InstantView** to record your computer's screen and audio.
4. You may need to quit and reopen the application for changes to take effect.

Note: Screen recording is ONLY for screen expansion. The software does not collect any content information from your computer.

Your browser does not support the video tag.

Video: A step-by-step guide demonstrating the Silicon Motion Driver Installation for Mac OS.

4.4 Monitor Connection

Connect your external monitors to any of the 3 HDMI or 2 DisplayPort outputs on the docking station. The docking station supports various combinations for triple 4K@60Hz displays.

HDMI & DP Output

Unlock the 4K Triple Display on Macbook Pro/Air

NOTE: Please Pre-install the Driver before use.

4K@60Hz
All interfaces can output Up to

3 HDMI & 2 DP
Choose any 3 of the 5 interfaces

Image: A setup showing a laptop connected to the docking station, extending its display across three 4K monitors.

Your browser does not support the video tag.

Video: An unboxing and initial setup demonstration of the Triple Display Docking Station with Dual Stand (BD242A).

5. OPERATING INSTRUCTIONS

5.1 Triple Display Setup

Once the driver is installed and monitors are connected, your laptop's display can be extended to up to three external monitors. You can choose any 3 of the 5 available HDMI and DisplayPort outputs.

Triple Display for Macbook and Most Windows Laptops

Choose any 3 of the 3 HDMI + 2 DP ports
Easy to expand to 3 different displays, catering to the diverse needs of multi-display



NOTE: Please install the Driver before use.

Image: An example of a triple display setup with a laptop and three external monitors, compatible with both MacBook and Windows systems.

Your browser does not support the video tag.

Video: A demonstration of the 17-in-1 USB-C Docking Station supporting triple monitor output (BD242A).

5.2 Clamshell Mode

To use your laptop with the lid closed (clamshell mode) while connected to external monitors, ensure the following:

- A mouse must be connected to the docking station to wake up the laptop.
- The DC power adapter must be connected to power the dock.
- Your laptop's settings must be configured not to auto-sleep when the lid is closed and connected to an external display.



Image: Instructions for extending the display with the laptop lid closed (clamshell mode), highlighting necessary connections and settings.

5.3 Data Transfer

The docking station provides multiple high-speed data ports:

- **USB-C 10Gbps (Data ONLY):** For ultra-fast data transfer.
- **USB-C 10Gbps with 7.5W:** For data transfer and simultaneous charging of small peripherals.
- **2 x USB-A 5Gbps with 7.5W:** For connecting various USB-A devices and charging.
- **USB-A 2.0:** Ideal for connecting keyboards, mice, or other low-bandwidth devices.

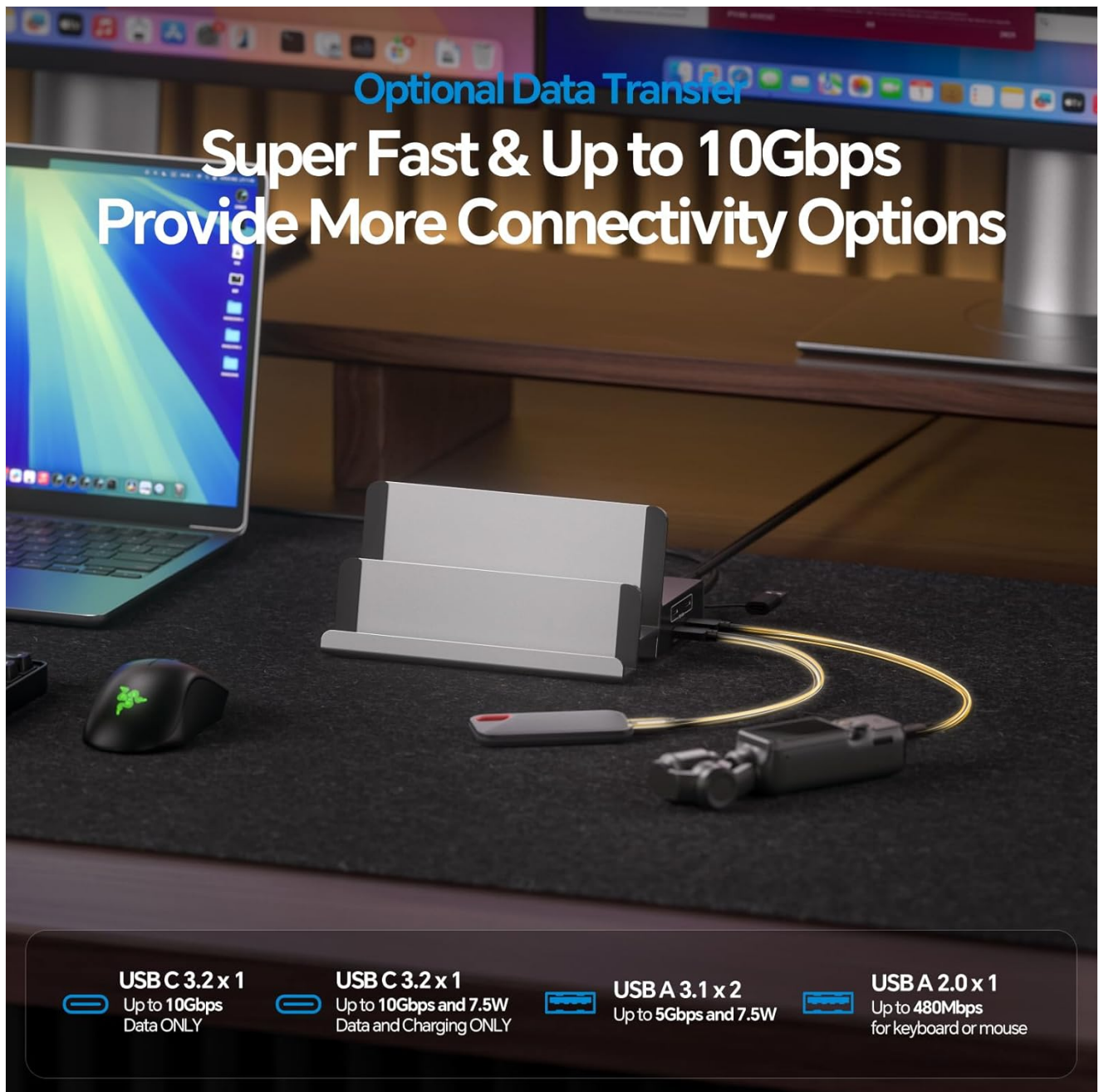


Image: A visual representation of connecting various devices for high-speed data transfer via the docking station's USB-C and USB-A ports.

5.4 Charging Functions

The docking station offers versatile charging capabilities:

- **Laptop Charging (via PD IN):** Connect an external PD adapter (up to 100W, not included) to the **PD IN** port to charge your laptop.
- **Peripheral Charging (via USB-C PD Output):** Two dedicated USB-C PD output ports provide up to 45W for a single port or 22W per port when both are used simultaneously, ideal for smartphones, tablets, and other accessories.



Image: An illustration detailing the fast charging capabilities, including 100W PD input for laptops and 45W/22W output for peripherals.

5.5 SD/TF Card Reader

Insert your SD or TF (MicroSD) cards into the dedicated slots for simultaneous reading and writing at speeds up to 104Mbps.

5.6 Ethernet Connection

Connect an Ethernet cable to the Gigabit Ethernet port for a stable and high-speed wired network connection (10/100/1000Mbps).

5.7 Audio Jack

Plug your headphones or speakers into the 3.5mm audio/mic jack for audio output.

Multifunction All-in-One More Powerful



Image: A close-up view highlighting the SD/TF card reader, Gigabit Ethernet port, and 3.5mm audio/mic jack.

5.8 Dual Stand Usage

The integrated dual stand allows you to store your laptop, tablet, or smartphone vertically, saving desk space and keeping your workspace organized. The front slot is 17mm wide, suitable for phones/tablets, while the back slot is 29mm wide for laptops.



Image: The dual stand design of the docking station, holding a laptop and a tablet vertically to save desk space.

Your browser does not support the video tag.

Video: An overview of the Triple Display Docking Station Stand for Laptops (BD242A), showcasing its features and design.

6. MAINTENANCE

To ensure the longevity and optimal performance of your docking station:

- Keep the device clean and free from dust. Use a soft, dry cloth for cleaning.
- Avoid exposing the device to extreme temperatures, humidity, or direct sunlight.
- Do not attempt to disassemble or repair the device yourself. Contact customer support for assistance.
- Ensure proper ventilation around the docking station to prevent overheating.

7. TROUBLESHOOTING

If you encounter issues with your docking station, refer to the following common solutions:

- **No Display Output:**

- Ensure the Silicon Motion driver is correctly installed and granted necessary permissions (especially on macOS).
- Verify that the 72W DC power adapter is connected and providing power to the docking station.
- Check all HDMI/DisplayPort cables and connections.
- Restart your laptop and the docking station.

- **Laptop Not Charging:**

- Ensure an external PD adapter (up to 100W) is connected to the **PD IN** port on the docking station. The included 72W adapter powers the dock, not the laptop directly.
- Note that the **PD IN** port will not charge your laptop when using the dock with a USB-A laptop.

- **USB Devices Not Recognized:**

- Ensure the docking station is properly connected to your laptop via the **USB-C to Host** port.
- Try connecting the USB device to a different port on the docking station.
- Ensure the device drivers for the USB peripheral are installed on your laptop.

- **Ethernet Connection Issues:**

- Check the Ethernet cable connection to both the docking station and your router/modem.
- Verify network settings on your laptop.

8. SPECIFICATIONS

Feature	Description
Model Number	BD242A
Ports	19-in-1 (3x HDMI, 2x DisplayPort, 2x USB-C 10Gbps, 2x USB-A 5Gbps, 1x USB-A 2.0, 2x USB-C PD Output, SD/TF Card Reader, Gigabit Ethernet, 3.5mm Audio, DC IN, PD IN, USB-C to Host)
Video Output	Triple 4K@60Hz (via HDMI/DisplayPort)
Power Delivery (PD IN)	Up to 100W for laptop (adapter not included)
Power Output (USB-C PD)	45W (single port) / 22W (dual ports)
Data Transfer Speed	USB-C/USB-A up to 10Gbps / 5Gbps, SD/TF up to 104Mbps
Ethernet	Gigabit (10/100/1000Mbps)
Compatibility	Thunderbolt 5/4/3, USB 4.0, USB-C/A Laptops, macOS 11+, Windows 10+, Chrome OS 100+
Material	Aluminum
Dimensions	7.68 x 7.13 x 3.82 inches
Weight	2.4 pounds

9. WARRANTY AND SUPPORT

For warranty information or technical support, please refer to the contact details provided in your product packaging or visit the PULWTOP official website. Keep your purchase receipt for warranty claims.