

Manuals+

[Q & A](#) | [Deep Search](#) | [Upload](#)

manuals.plus /

› [Redragon](#) /

› [Redragon S157-PRO Wireless Gaming Keyboard and Mouse Combo User Manual](#)

Redragon S157-PRO

Redragon S157-PRO Wireless Gaming Keyboard and Mouse Combo User Manual

Model: S157-PRO

1. PRODUCT OVERVIEW

The Redragon S157-PRO is a versatile wireless gaming keyboard and mouse combo designed for multi-device compatibility and enhanced gaming and productivity. It features tri-mode connectivity (Bluetooth 5.0, 2.4GHz wireless, and USB-C wired), customizable RGB backlighting, and programmable macro keys for both the keyboard and mouse.



Image: The Redragon S157-PRO keyboard and mouse combo, showcasing its RGB backlighting.

2. PACKAGE CONTENTS

Verify that all items are present in your package:

- Redragon S157-PRO Wireless Gaming Keyboard
- Redragon S157-PRO Wireless Gaming Mouse
- USB-A to USB-C Cable
- USB Receiver (for 2.4GHz wireless connection)
- User Manual



Image: An illustration showing the keyboard, mouse, USB receiver, USB-C cable, and user manual included in the package.

3. SETUP AND CONNECTIVITY

The S157-PRO combo offers three connection modes: Bluetooth 5.0, 2.4GHz wireless, and USB-C wired.

3.1 Tri-Mode Connection

You can connect the keyboard and mouse to up to three different devices (PC, Mac, tablets, phones, PS/XBOX) and switch between them effortlessly.



Image: The keyboard and mouse connected to a laptop and tablet, illustrating the tri-mode connection capability.

3.2 Connecting via 2.4GHz Wireless

1. Locate the USB receiver. It is typically stored in a compartment on the underside of the keyboard or mouse.
2. Plug the USB receiver into an available USB port on your computer or device.
3. On the keyboard and mouse, locate the mode switch (usually on the side or bottom) and set it to "2.4G".
4. The devices should automatically connect.



Image: A close-up of the keyboard's side, showing the 2.4G/OFF/BT switch, Win/Mac switch, and USB-C port, with the USB receiver detached.

3.3 Connecting via Bluetooth 5.0

1. On the keyboard and mouse, locate the mode switch and set it to "BT" (Bluetooth).
2. On your device (PC, Mac, tablet, phone), enable Bluetooth and search for new devices.
3. Select "Redragon S157-PRO Keyboard" and "Redragon S157-PRO Mouse" from the list of available devices to pair.
4. Follow any on-screen prompts to complete the pairing process.

3.4 Connecting via USB-C Wired

1. Connect one end of the provided USB-A to USB-C cable to the keyboard's USB-C port.
2. Connect the other end of the cable to an available USB-A port on your computer.
3. The keyboard will automatically switch to wired mode and begin charging.
4. For the mouse, connect the USB-C cable to its port and to your computer.

4. OPERATING INSTRUCTIONS

4.1 Keyboard Features

The S157-PRO keyboard is designed for optimal gaming and typing performance.



Image: An overview of the keyboard's features, including 60% layout, RGB backlighting, 4000mAh battery, and anti-ghosting keys.

4.1.1 RGB Backlighting

The keyboard features 16.8 million RGB colors with 8 preset modes and 6 DIY profiles. Adjust brightness from vibrant to subtle.

- To cycle through lighting modes, use the dedicated backlight control keys (usually indicated by light bulb icons or similar).
- Adjust brightness using the designated brightness control keys.



Image: Multiple views of the keyboard showcasing various RGB lighting effects and colors.

4.1.2 Macro Keys and Backlit Shortcuts

Program the 4 onboard macro keys (G1-G4) instantly without software. Record complex combos for gaming, shortcuts for productivity, or media commands.

- To record a macro in wired mode:
 1. Press the **Rec** button to start macro recording.
 2. Press [G1-G4] to select a profile to record the macro. The LED indicator will flash quickly.
 3. Press the keys you want to record into the macro (S157-PRO supports max 25 keys).
 4. Press **Rec** again to save the macro.
- On 2.4G mode, only macro output is supported. Macro recording is unavailable in Bluetooth mode.



Macro Record on Wired Mode

1. Press [Rec] button to start macro recording,
2. Press [G1~G4] to select a profile to record macro, LED indicator will flash quickly. Press the key you want to record into macro, S155-PRO supporting max 25 keys macro recording.
3. press [Rec] to save the macro.
On 2.4G mode, only support macro output.
on BT mode, macro unavailable

Image: A close-up of the keyboard highlighting the G1-G4 macro keys and the Rec button, with instructions for macro recording.

4.1.3 Quiet Typing and Durability

The keyboard features whisper-quiet gaming switches with a classic volcano switch structure, ensuring durability and a lifespan of 50 million keystrokes.

Your browser does not support the video tag.

Video: A demonstration of the Redragon S157-PRO keyboard and mouse combo, highlighting quiet sound with membrane linear keys, RGB backlight effects, on-board macro keys, DPI adjustment on the mouse, soft and linear switches, and convenient side function keys for switching between Windows and Mac modes.

The video above demonstrates the quiet sound of the membrane linear keys and the smooth typing feeling provided by the soft and linear switches.

4.2 Mouse Features

The S157-PRO mouse offers high precision and customization for gaming.



Image: An overview of the mouse's features, including BT5.0/2.4G/Wired connectivity, 12800 DPI Max, 7 Macro Buttons, and 700mAh battery.

4.2.1 DPI Adjustment

The mouse features 5 on-board DPI levels, allowing for precise cursor control. These DPI levels can be customized via software.

- Use the dedicated DPI buttons on the mouse to cycle through preset DPI levels.
- For advanced customization, refer to the software section.

4.2.2 Programmable Buttons

The mouse has 7 programmable buttons for easy keybinding and hotkeys.



Image: A diagram of the mouse highlighting its 7 programmable buttons and a screenshot of the software interface for keybinding.

4.2.3 RGB Lighting

The mouse also features 16.8 million RGB colors, complementing the keyboard's lighting effects.



Image: Multiple views of the mouse showcasing various RGB lighting effects and colors.

4.3 Software Support

Both the keyboard and mouse support custom software for advanced customization of functions, macros, RGB lighting, and shortcuts.

- Keyboard software: bit.ly/S157keyboard
- Mouse software: bit.ly/S157mouse



Image: Screenshots of the custom software interface for the keyboard, showing options for RGB backlight control, custom shortcut keys, macro recording, and music rhythm light effects.

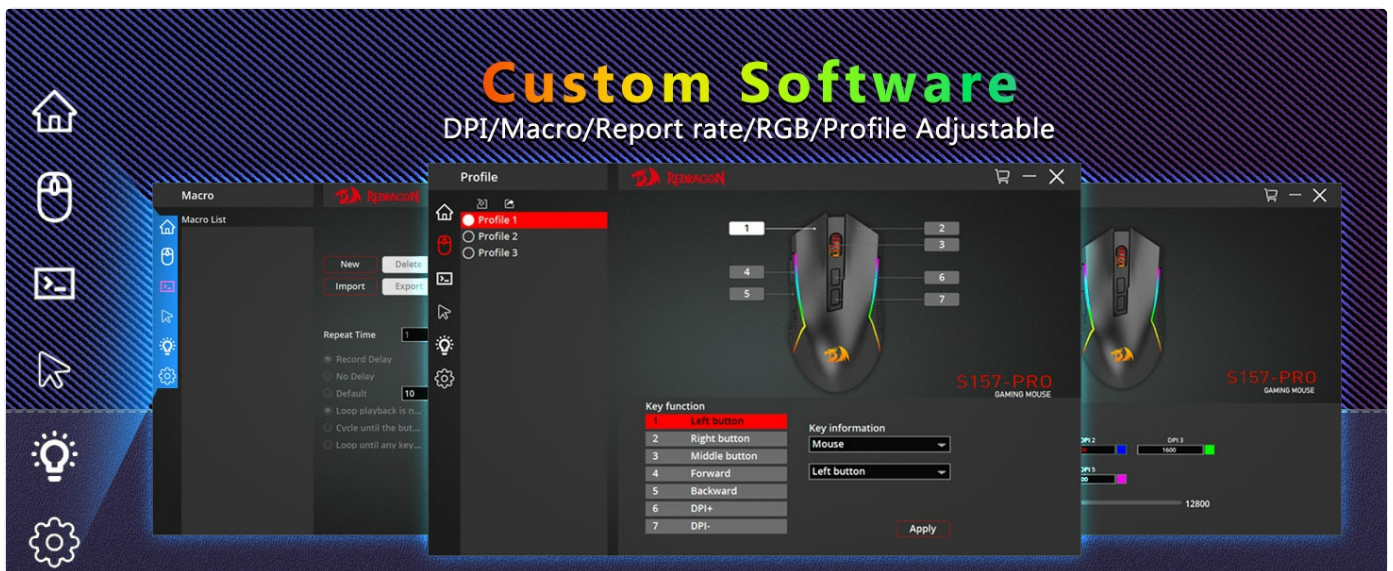


Image: Screenshots of the custom software interface for the mouse, showing options for DPI, macro, report rate, RGB, and profile adjustments.

4.4 Power Management

The keyboard is equipped with a 4,000mAh battery and the mouse with a 700mAh battery, providing extended usage times.

- **Charging:** Use the provided USB-C cable to charge both devices. They can be charged via any 5V DC source, such as a computer USB port.
- **Auto Power Saving:** The backlight will turn off when the keyboard and mouse are not in use to conserve battery. Press any button to wake them up.
 - Keyboard backlight off after 3 minutes of inactivity.
 - Mouse backlight off after 2 minutes of inactivity.



Image: An illustration showing the 4000mAh battery capacity of the keyboard and 700mAh battery capacity of the mouse, emphasizing super battery life.



Image: The keyboard and mouse on a desk, with text indicating auto power saving features for backlight shutdown after inactivity.

4.5 Compatibility

The Redragon S157-PRO combo is widely compatible with various devices, including PCs, laptops, gaming consoles (PS/XBOX), tablets, and smartphones.

Wide Compatibility



PC



Laptop



TV



Tablet



Image: Icons representing PC, laptop, TV, and tablet, indicating wide compatibility for the keyboard and mouse combo.

The keyboard also features a convenient switch to easily toggle between Windows and Mac layouts.



Image: A close-up of the keyboard's side, showing the 2.4G/OFF/BT switch, Win/Mac switch, and USB-C port, with the USB receiver detached.

5. MAINTENANCE

To ensure the longevity and optimal performance of your Redragon S157-PRO keyboard and mouse combo, follow these maintenance guidelines:

- **Cleaning:** Use a soft, dry cloth to wipe down the surfaces of the keyboard and mouse. For deeper cleaning, a slightly damp cloth with mild soap can be used, ensuring no liquid enters the internal components. Avoid harsh chemicals or abrasive materials.
- **Dust Removal:** Use compressed air to remove dust and debris from between the keycaps and around the mouse sensor.
- **Storage:** When not in use for extended periods, store the devices in a cool, dry place away from direct sunlight and extreme temperatures.
- **Battery Care:** Avoid fully discharging the batteries frequently. Charge them regularly to maintain battery health.

6. TROUBLESHOOTING

If you encounter issues with your Redragon S157-PRO combo, refer to the following common solutions:

Problem	Possible Cause	Solution
Device not responding (wireless)	Low battery, incorrect mode, out of range, interference.	Charge the device. Ensure the mode switch is set correctly (2.4G or BT). Move closer to the receiver/device. Reduce interference from other wireless devices.
Lag or input delay	Interference, low battery, distance.	Ensure devices are fully charged. Move closer to the receiver/device. Try a different USB port for the receiver.
RGB lighting not working	Lighting mode off, low battery, software issue.	Check lighting control keys. Charge the device. Reinstall or update the software.
Macros not recording/working	Incorrect mode (BT), software conflict.	Ensure keyboard is in wired mode for macro recording. Check software settings.
Mouse cursor erratic	Dirty sensor, unsuitable surface.	Clean the optical sensor. Use a mouse pad or a uniform, non-reflective surface.

If the problem persists, please contact Redragon customer support.

7. SPECIFICATIONS

Feature	Detail
Model Number	S157-PRO
Connectivity	Bluetooth 5.0, 2.4GHz Wireless, USB-C Wired
Keyboard Battery	4,000mAh
Mouse Battery	700mAh
Keyboard Switches	Membrane Linear (Quiet Sound)
Keyboard Key Lifespan	50 Million Keystrokes
Keyboard Macro Keys	4 Onboard (G1-G4)
Keyboard Anti-Ghosting	26 Keys Simultaneous
Mouse DPI	Up to 12800 DPI (5 on-board levels, customizable)
Mouse Buttons	7 Programmable Buttons
RGB Lighting	16.8 Million Colors, Multiple Modes
Compatible Devices	Laptop, Gaming Console, Personal Computer, Tablet, Smartphone
Item Weight	1.13 pounds (Keyboard and Mouse combined)
Dimensions (Keyboard)	Approx. 12.83" x 5.31" x 1.35"
Dimensions (Mouse)	Approx. 4.9" x 2.56" x 1.57"

68+10 Keys 60% Keyboard

Keyboard weight: 1.12lb

Mouse weight : 0.21lb



Image: A diagram showing the dimensions of both the keyboard and mouse.

8. WARRANTY AND SUPPORT

Redragon products come with a standard manufacturer's warranty. For specific warranty details, please refer to the warranty card included in your package or visit the official Redragon website.

For technical support, troubleshooting assistance, or any product-related inquiries, please contact Redragon customer service through their official channels. Keep your purchase receipt or order number handy for faster service.

Official Redragon Store: [Redragon Amazon Store](#)