

[Manuals.plus](#) /

› [AlfaBot](#) /

› AlfaBot WS24 Cordless Electric Mop Instruction Manual

AlfaBot WS24

AlfaBot WS24 Cordless Electric Mop Instruction Manual

INTRODUCTION

Thank you for choosing the AlfaBot WS24 Cordless Electric Mop. This manual provides essential information for the safe and efficient use, maintenance, and troubleshooting of your new electric mop. Please read this manual thoroughly before first use and retain it for future reference.

SAFETY INSTRUCTIONS

- Read all instructions before using the appliance.
- Do not immerse the appliance in water or other liquids.
- Keep the appliance away from children.
- Use only the provided charging adapter.
- Do not use the mop on wet floors where standing water is present.
- Ensure the water tank cap is securely closed before operation.
- Turn off the appliance before cleaning or performing maintenance.
- Store the mop in a dry place when not in use.

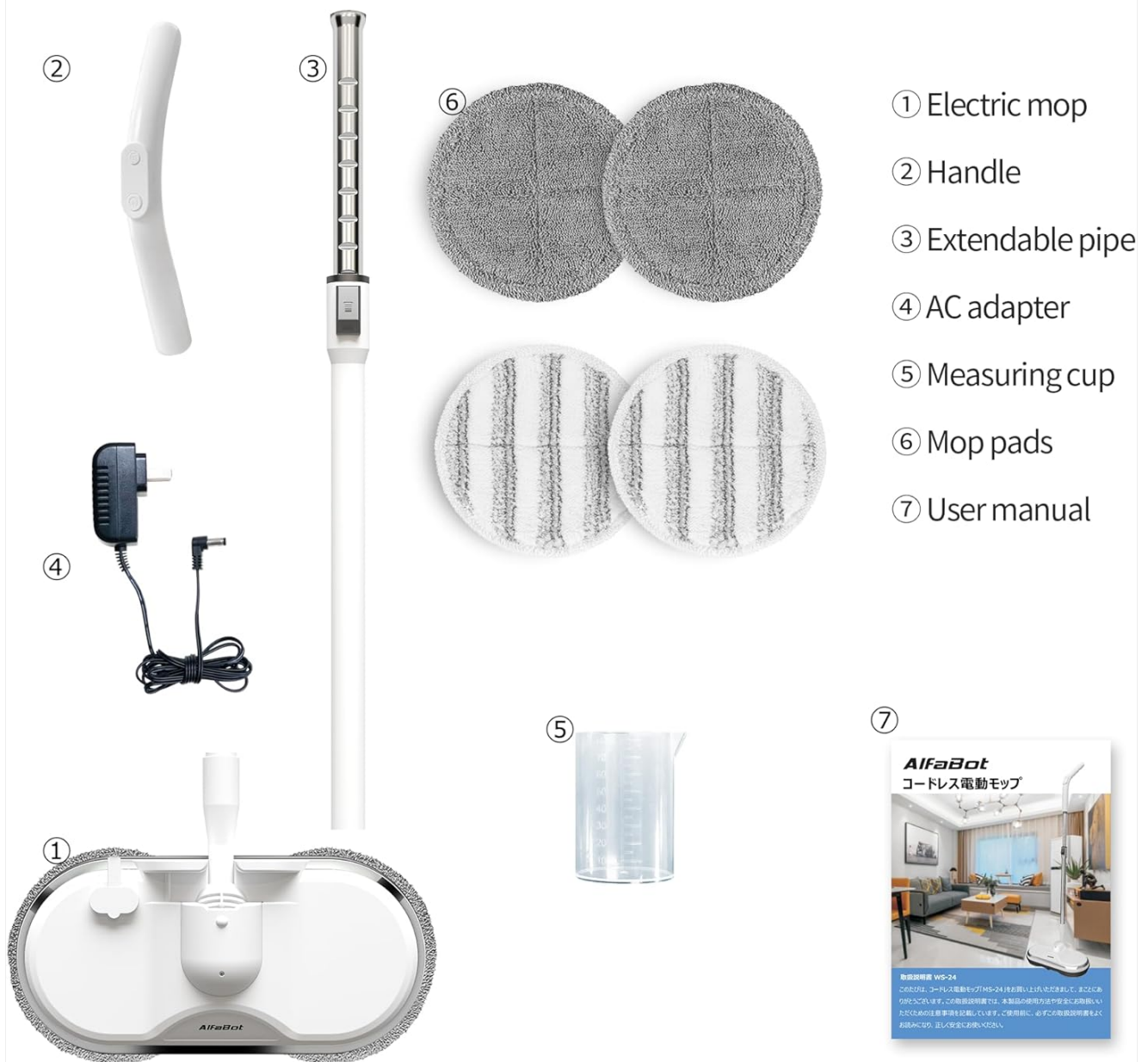
PACKAGE CONTENTS

Verify that all items are present in the package:

- 1 x Electric Mop Unit
- 1 x Handle
- 1 x Extendable Pipe
- 1 x AC Adapter
- 1 x Measuring Cup
- 2 Pairs (4 pieces) of Mop Pads (2 scrubbing, 2 polishing)

- 1 x User Manual (this document)

Package Contents



- ① Electric mop
- ② Handle
- ③ Extendable pipe
- ④ AC adapter
- ⑤ Measuring cup
- ⑥ Mop pads
- ⑦ User manual

Figure 1: Package Contents

SETUP

1. Assembly

1. **Attach the Extendable Pipe:** Insert the extendable pipe into the main mop unit until it clicks securely into place.
2. **Attach the Handle:** Connect the handle to the top of the extendable pipe, ensuring it is firmly attached.
3. **Attach Mop Pads:** Align the mop pads with the hook-and-loop fasteners on the bottom of the mop head. Press firmly to secure them.

2. Charging the Battery

Before first use, fully charge the mop for approximately 4 hours. The battery provides 40-50 minutes of run time on a

full charge.

1. Locate the charging port on the mop unit.
2. Connect the AC adapter to the charging port and plug it into a power outlet.
3. The indicator light will show charging status (e.g., red for charging, green for fully charged).

Lithium Battery for Cordless Use



Figure 2: Charging the Mop

3. Filling the Water Tank

The mop has a built-in 180ml water tank for wet cleaning.

1. Locate the water tank cap on the mop unit.
2. Open the cap and use the provided measuring cup to fill the tank with clean water or a suitable floor cleaning solution. Do not overfill.
3. Securely close the water tank cap.

Water Spray & LED Light



One click water spray



180mL water tank



Attached measuring cup



You can easily clean even dark places



Figure 3: Water Spray and LED Light Features

OPERATION

1. Powering On/Off

Press the power button on the handle to turn the mop on or off. The LED headlight will illuminate when the mop is active.

2. Using the Water Spray

Press the spray button on the handle to activate the water spray function. This is useful for loosening stubborn dirt or for wet mopping.

3. Using the LED Headlight

The integrated LED headlight automatically turns on with the mop, providing visibility in dark areas, under furniture, or in corners.

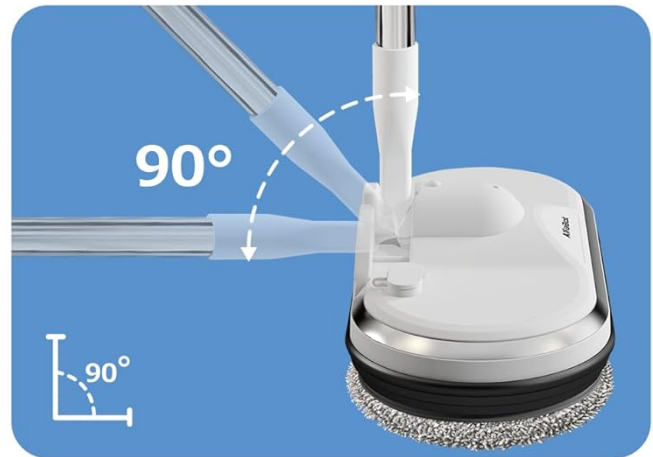
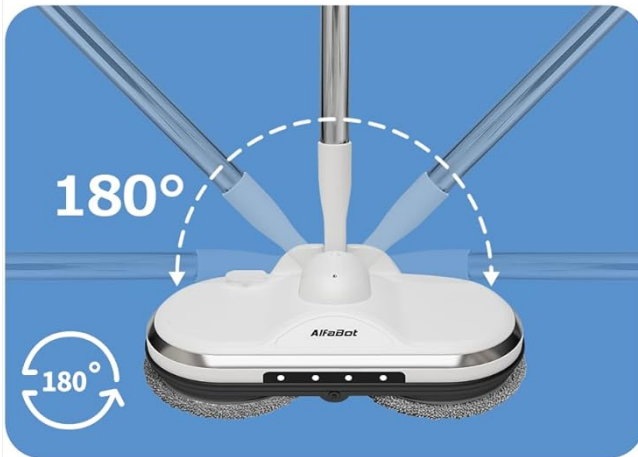
4. Adjusting Handle Length and Angle

The handle length can be adjusted from 37.4 inches to 48.4 inches to suit user height. The mop head can swivel 180° horizontally and 90° vertically, allowing access to hard-to-reach spaces.



Figure 4: Adjustable Handle Length

Swivel Steering Self-propelled



Adjustable angles to meet the different need



Figure 5: Adjustable Mop Head Angles

5. Cleaning Tips

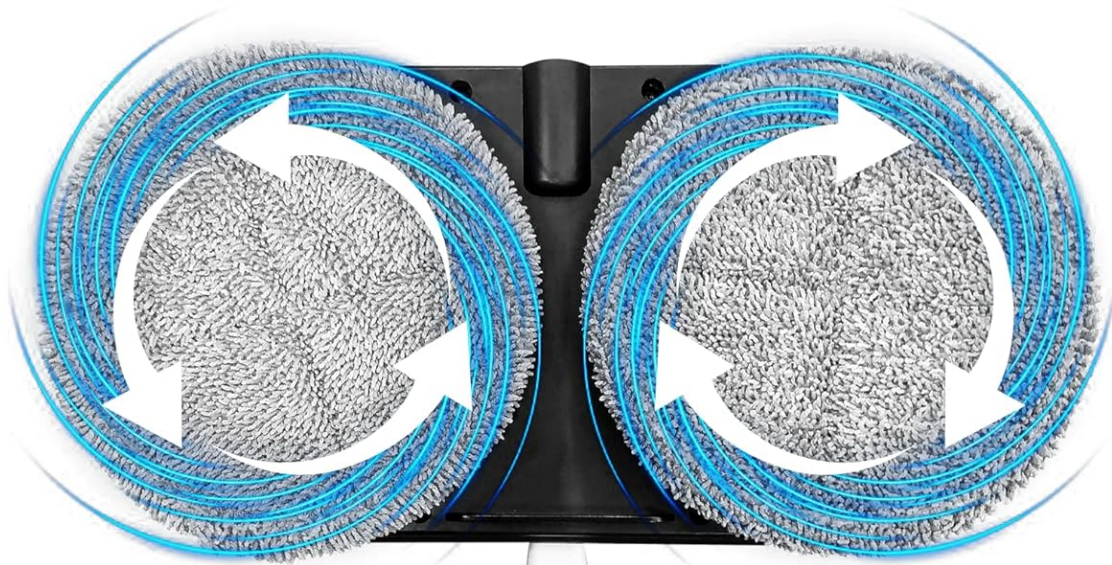
The dual-motor spin heads rotate at 150 revolutions per minute, propelling the mop forward and assisting in cleaning. Guide the mop gently across the floor; excessive force is not required.

- Suitable for hardwood, tile, marble, and laminate floors.
- For best results, pre-sweep or vacuum the floor to remove loose debris before mopping.
- Use the spray function as needed for wet cleaning or to tackle dried stains.



Powerful Spin Head

High-speed rotation of 150 r/min



Before Cleaning



After Cleaning



Figure 6: Powerful Spin Head Action

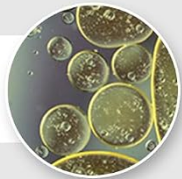
For Various Floor Cleaning

By developing a cleaning habit,
you can keep your home clean and comfortable.

Foot
prints



Sebum
stains



Dust



Invisible
bacteria



Wooden floor

Marble floor

Tile floor



Figure 7: Suitable for Various Floor Types

MAINTENANCE

1. Cleaning Mop Pads

The reusable mop pads should be cleaned after each use.

- Remove the mop pads from the mop head.
- Machine wash the pads with mild detergent or hand wash them thoroughly.
- Air dry the pads completely before reattaching or storing.

2. Cleaning the Water Tank

Regularly clean the water tank to prevent residue buildup.

- Empty any remaining water or solution from the tank.
- Rinse the tank with clean water.

- Allow the tank to air dry with the cap open to prevent odors.

3. Battery Care

To prolong battery life:

- Avoid completely draining the battery before recharging.
- Store the mop with a partial charge if not used for extended periods.
- Do not expose the battery to extreme temperatures.

4. Storage

Store the mop in a cool, dry place. The mop is designed to be self-standing, eliminating the need to lean it against a wall.

TROUBLESHOOTING

Problem	Possible Cause	Solution
Mop does not turn on	Battery is depleted Power button not pressed correctly	Charge the battery fully Ensure the power button is pressed firmly
No water spray	Water tank is empty Nozzle is clogged	Refill the water tank Clean the spray nozzle with a small brush
Mop pads not spinning effectively	Mop pads are dirty or worn Obstruction on the floor	Clean or replace mop pads Remove any debris from the floor
Reduced battery life	Battery not fully charged Battery degradation over time	Ensure full charge before use Contact customer support for potential battery replacement

SPECIFICATIONS

Feature	Detail
Brand	AlfaBot
Model Name	WS24
Special Feature	Cordless
Surface Recommendation	Floor (Hardwood, Tile, Marble, Laminate)
Wattage	30 watts
Power Source	Battery Powered
Item Weight	2.24 Kilograms

Feature	Detail
Tank Volume / Capacity	180 Milliliters
Battery	2000mAh Rechargeable
Run Time	40-50 minutes (after 4 hours charging)
Handle Adjustment	37.4" to 48.4"
Mop Head Rotation Speed	Up to 150 r/min

WARRANTY

The AlfaBot WS24 Cordless Electric Mop comes with a **12-month warranty** from the date of purchase. This warranty covers manufacturing defects under normal use. Please retain your proof of purchase for warranty claims. The warranty does not cover damage caused by misuse, accidents, unauthorized repairs, or normal wear and tear.

CUSTOMER SUPPORT

If you have any questions, concerns, or require assistance with your AlfaBot WS24 Cordless Electric Mop, please contact our customer support team:

- **Email:** support@alfabot.com
- **Website:** www.alfabot.com/support

Please provide your model number (WS24) and purchase date when contacting support for faster service.