

## AIYATO 8032766961143

# AIYATO Smart Tracker Tag Card Instruction Manual - Model 8032766961143

## 1. PRODUCT OVERVIEW

---

The AIYATO Smart Tracker Tag Card is a thin, rechargeable Bluetooth item finder designed to help you locate your valuables using the Apple Find My network. Its ultra-thin profile allows it to fit seamlessly into wallets, luggage, or passport holders. Featuring an 80dB alarm and IP67 waterproof rating, it offers reliable tracking and durability.



Image: The AIYATO Smart Tracker Tag Card, showcasing its slim profile and compatibility with Apple Find My.

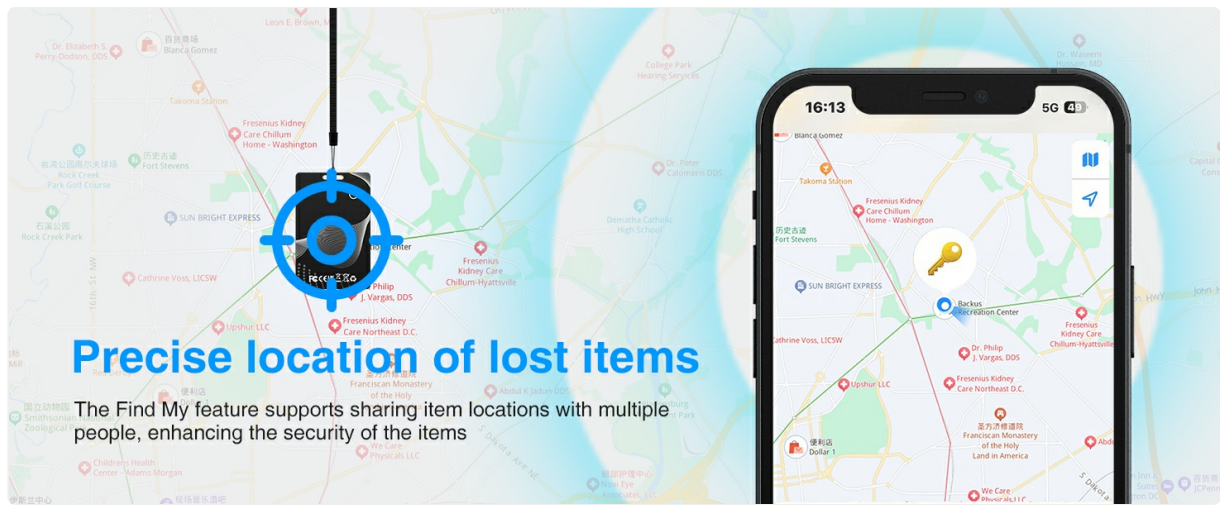


Image: The tracker card seamlessly integrates with the Apple Find My network for easy location tracking.

## 2. SETUP GUIDE

Follow these steps to set up your AIYATO Smart Tracker Tag Card with your Apple device:

1. Ensure Bluetooth is enabled on your Apple device.
2. Press the power button on the tracker card to activate it.
3. Open the Apple Find My app on your iPhone or iPad (iOS 14.5+ required).
4. Navigate to the 'Items' tab and tap 'Add Item'.
5. Select 'Other Supported Item' and follow the on-screen prompts to connect.
6. Name your item and choose an emoji for easy identification.



Image: Initial setup steps: Enable Bluetooth, power on the tracker, and open the Find My app.

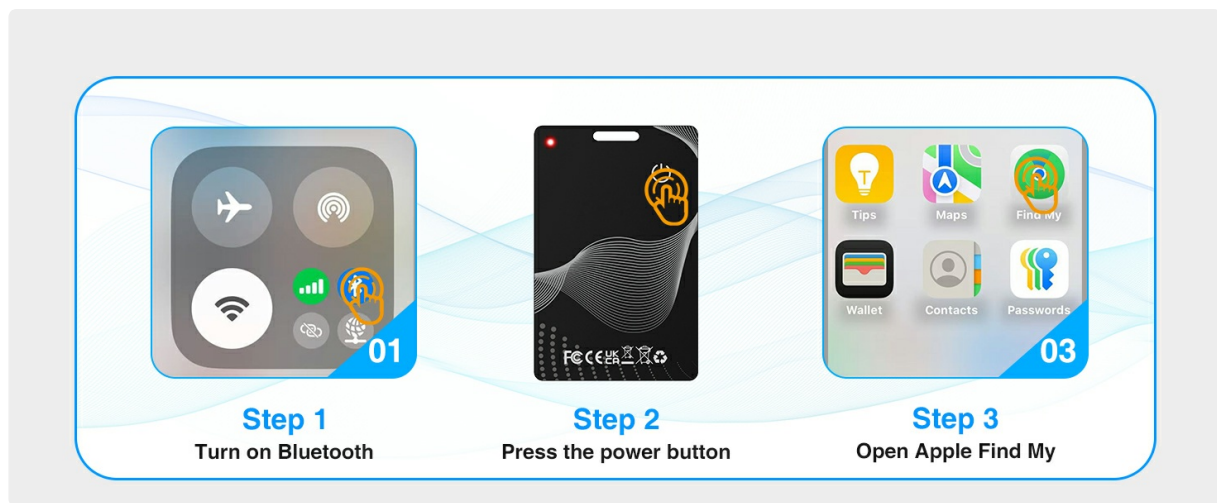


Image: Steps to add the tracker as a new item within the Apple Find My app.

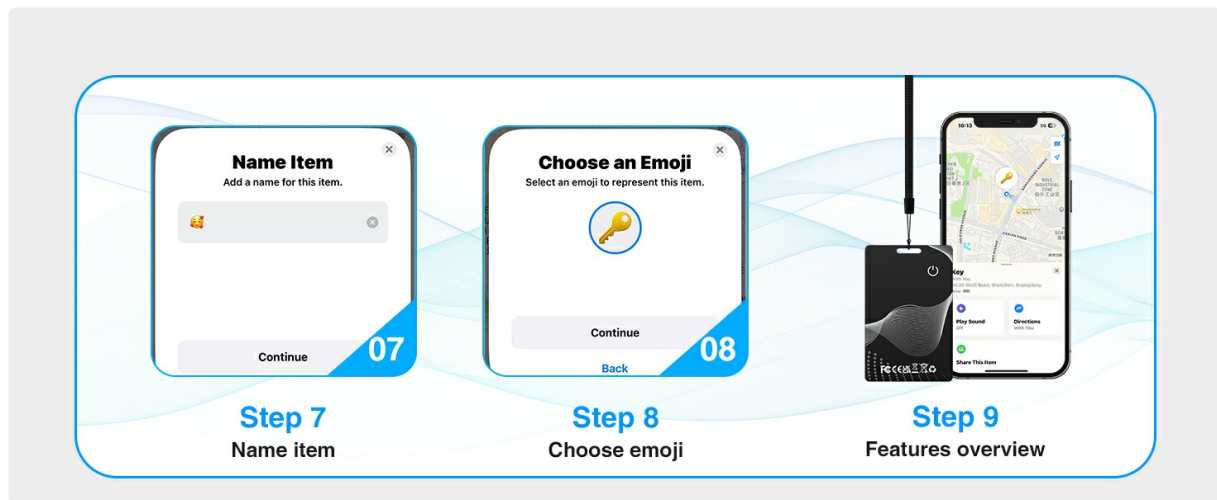


Image: Finalizing setup by naming your tracker and customizing its icon.

## Video Guide: Pairing with Apple Find My App

Video: A visual guide demonstrating how to pair the tracker card with the Apple Find My app, including device reset and connection steps.

## 3. OPERATING INSTRUCTIONS

The AIYATO Smart Tracker Tag Card offers several features to help you keep track of your belongings:

- **Loud 80dB Alarm:** Use the Find My app to trigger an 80dB alarm on the tracker, making it easy to locate nearby items like keys or wallets.
- **Lost Mode:** If your item is lost and out of Bluetooth range, the Find My network can help locate it. Enable Lost Mode in the app to receive notifications when it's detected by another Apple device.
- **Share Mode:** Share the location of your tracker with family or friends through the Find My app (requires iOS 18.2+ and feature enablement in the app).
- **Left-Behind Reminders:** Receive instant notifications on your phone if you leave your tracked item behind.



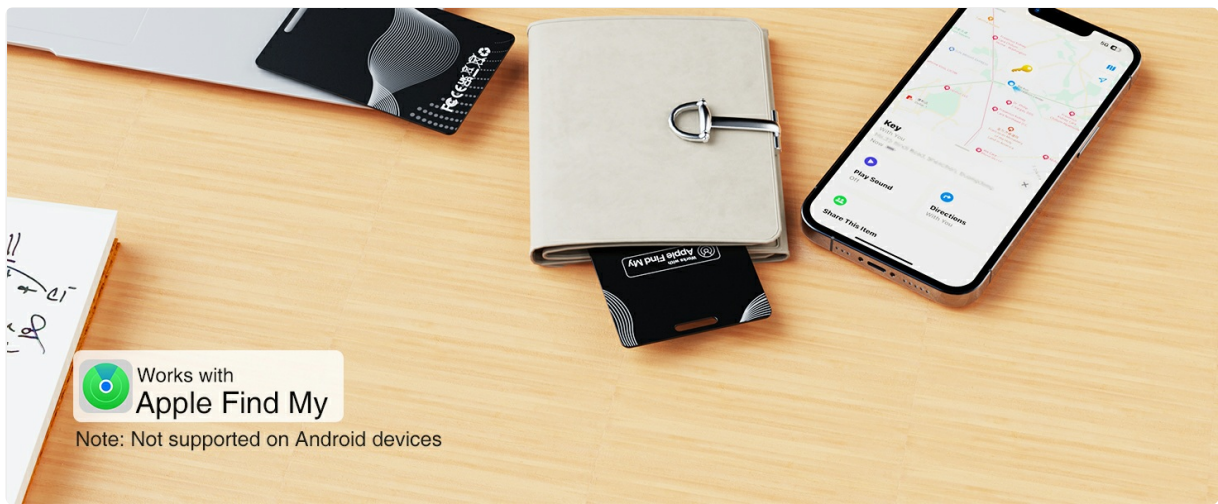


Image: Use the Find My app to play a loud sound and quickly locate your lost items.



Image: Receive instant 'Left Behind' reminders if you accidentally leave your valuables behind.



Image: Share your item's location with trusted family and friends for collaborative tracking.



Image: The Find My network ensures your location data is encrypted and private.

## Video Guide: Finding Lost Items and Left-Behind Reminders

Video: Demonstrates how to use the Find My app to play a sound on the tracker and receive notifications when an item is left behind.

## 4. MAINTENANCE

---

To ensure optimal performance and longevity of your AIYATO Smart Tracker Tag Card, follow these maintenance guidelines:

- **Wireless Charging:** The tracker card supports wireless charging. Place it gently on a Qi-enabled wireless charger (charger not included) with the charging symbol facing down. A full charge takes approximately 2 hours and provides up to 5 months of standby time.
- **Waterproof Design:** The device is IP67 waterproof, meaning it can withstand splashes and brief immersion in water. However, it is not recommended for prolonged submersion.
- **Cleaning:** Wipe the tracker with a soft, dry cloth to remove dust or smudges. Avoid using harsh chemicals or abrasive materials.



Image: The tracker card supports convenient wireless charging, offering long standby time.





Image: Ensure the side with the charging symbol is facing down on the wireless charger.

## 5. TROUBLESHOOTING COMMON ISSUES

If you encounter issues with your AIYATO Smart Tracker Tag Card, try the following solutions:

- **Not Connecting to Find My:**
  - Ensure your phone's network and Bluetooth are turned on.
  - Restart the tracker card by pressing and holding the button for 3 seconds (two beeps confirm power off), then press once to power on (long beep confirms power on).
  - Restart your iPhone/iPad.
  - If the issue persists, perform a factory reset: Disconnect the card from the Find My app. Quickly press the button 5 times. On the 5th press, press and hold until you hear a long beep. This confirms a successful factory reset.
- **Alarm Not Loud Enough:** Ensure the tracker is not obstructed by thick materials when placed in a wallet or bag.
- **Battery Life Concerns:** Ensure the device is fully charged using a compatible wireless charger. Standby time is up to 5 months.
- **Android Compatibility:** Note that this device is designed exclusively for Apple iOS devices and is not compatible with Android.

### Video Guide: Setup and Troubleshooting

Video: A comprehensive video covering both initial setup and common troubleshooting steps for the tracker card.

## 6. PRODUCT SPECIFICATIONS

Brand	AIYATO
Model Number	8032766961143
Dimensions	0.15 x 1.5 x 0.15 cm; 20 g (approx. 2L x 15W x 2Th millimeters)
Connectivity	Bluetooth
Compatible Devices	Apple Devices (iOS 14.5+ for basic functionality, iOS 18.2+ for Share Mode)

Alarm Volume	80dB
Waterproof Rating	IP67
Charging	Wireless Charging (Qi-enabled, charger not included)
Battery Type	Lithium Ion (1 included)
Standby Time	Up to 5 months
Material	Plastic

## 7. WARRANTY AND CUSTOMER SUPPORT

---

AIYATO provides a **1-year free return and replacement** policy for this product. For any inquiries, technical assistance, or to claim your warranty, please contact AIYATO customer support through the platform where you purchased the product or refer to the contact information provided in your product packaging. Each item includes a unique code verified by Transparency before shipping, ensuring product authenticity.