



Manuals.plus /

› Leiksen /

› Leiksen 12-in-1 Steam Mop User Manual

Leiksen Leiksen-Steam Mop

Leiksen 12-in-1 Steam Mop Instruction Manual

Model: Leiksen-Steam Mop

PRODUCT OVERVIEW

The Leiksen 12-in-1 Steam Mop is a versatile cleaning appliance designed for various surfaces, including hardwood floors, tiles, carpets, windows, and upholstery. It utilizes high-temperature steam to effectively clean and sanitize without the need for chemical cleaners. The detachable handheld unit and multiple attachments enhance its functionality for comprehensive household cleaning.

attachments for cleaning kitchen stoves, bathrooms, windows, upholstery, and more.

- **Adjustable Height and Angle:** Equipped with a telescopic rod for height adjustment and a flexible mop head (120° left/right, 90° front/back) for easy maneuverability under furniture.
- **Long Power Cord:** An extra-long 23ft power cord allows for extensive cleaning reach without constant unplugging.

Say Goodbye To Grease & Grime

No Chemicals

260°F
Deep Cleaning

99%
Stain removal

12s
Rapid heating

Figure 2: The steam mop provides deep cleaning at 260°F, removing 99% of stains without chemicals, and heats up in 12 seconds.

Large Removable Tank

20oz reservoir continuously steaming for 45minutes



Figure 3: The Leiksen steam mop features a large 550mL removable water tank for extended use.

Multiple Scientific Designs



Figure 4: Ergonomic design with adjustable height, swivel steering, and a long power cord.

Suitable For all Floors



Figure 5: The steam mop is suitable for a variety of floor types.

SETUP

1. **Assembly:** Attach the handle and telescopic rod to the main unit. Ensure all connections are secure.
2. **Attach Mop Pad:** Securely attach a clean microfiber mop pad to the base of the steam mop.
3. **Fill Water Tank:** Detach the water tank from the main unit. Use the provided measuring cup to fill the tank with clean water. Do not overfill. Reattach the water tank securely.
4. **Connect Power:** Plug the 23ft power cord into a suitable electrical outlet.



Figure 6: Instructions for installing accessories and the main handle.

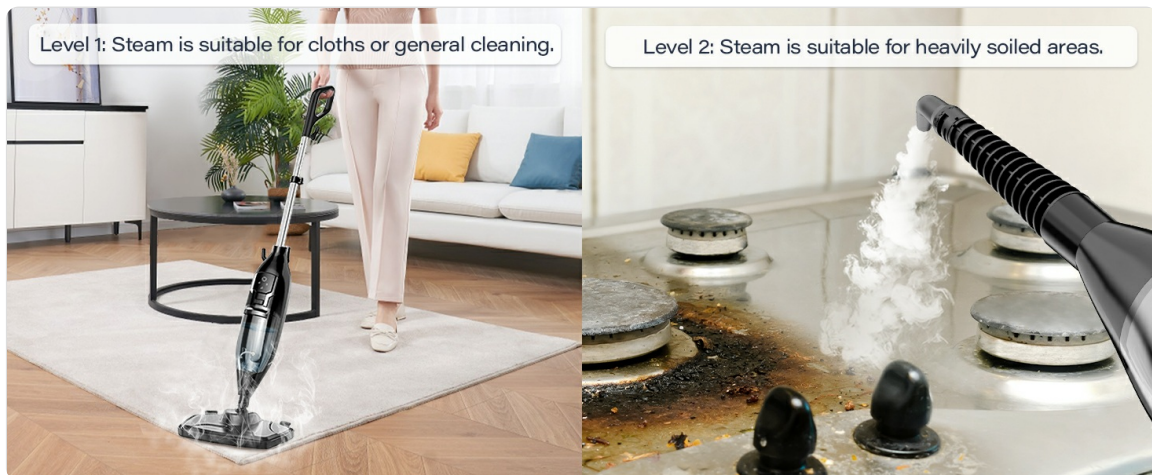


Figure 7: The 550ml removable oversized water tank.

OPERATING INSTRUCTIONS

1. **Power On and Heat Up:** Press the power switch button. The indicator light will flash while heating up. It typically takes about 12 seconds to reach operating temperature. The light will become solid when ready.
2. **Select Steam Level:** Once heated, press the steam level button to cycle between Low steam (for delicate fabrics and general cleaning) and High steam (for stubborn stains and heavy-duty cleaning).
3. **Begin Cleaning:** Move the steam mop slowly and steadily across the surface to be cleaned. The steam will be released automatically. For handheld use, detach the main unit and attach the desired accessory.
4. **Carpet Cleaning:** For carpets, attach the carpet glider over the mop head. This allows the mop to glide smoothly while steaming and refreshing carpets.
5. **Multi-Purpose Cleaning:** Utilize the various attachments for specific tasks:
 - **Large Round Brush:** For general scrubbing.
 - **Small Round Nylon Brush:** For crevices and tight spaces.
 - **Brass Brush:** For tough grime on grills or stovetops.

- **Scraping Tool:** For removing baked-on residue.
 - **Window Cleaning Tool:** For streak-free windows.
 - **Ironing Brush:** For steaming clothes and fabrics.
6. **Self-Standing Feature:** The mop is designed to stand upright on its own, allowing you to pause cleaning without leaning it against walls.
 7. **Power Off:** When finished, press the power switch button to turn off the unit and unplug it from the outlet.



Figure 8: Achieve deep cleaning with 260°F steam, no chemicals required.

Multi-Purpose Steam Cleaning



Figure 9: The 12-in-1 steam mop offers multi-purpose cleaning with various attachments.



Figure 10: Use the carpet glider for effective carpet steaming.

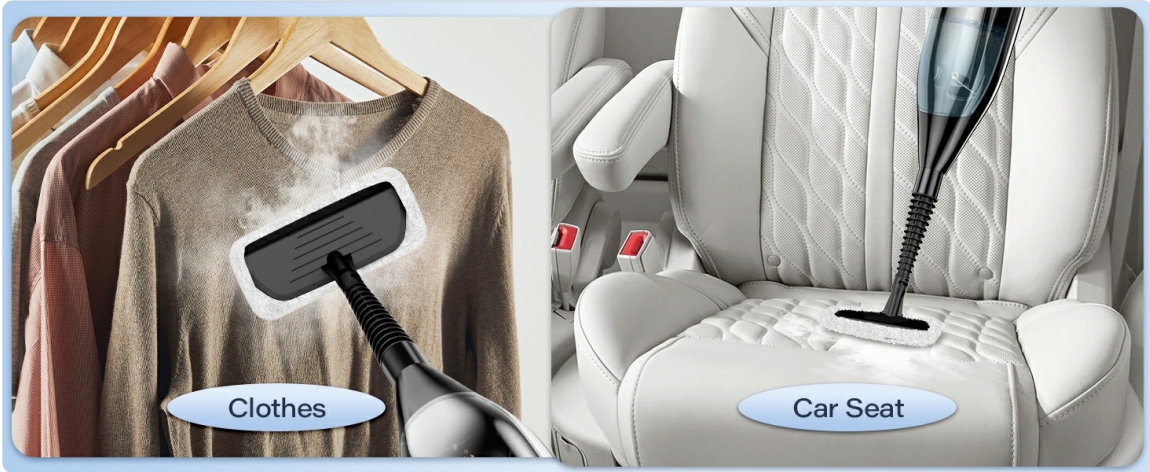


Figure 11: The handheld unit is ideal for cleaning windows and hard-to-reach areas like toilet bases.

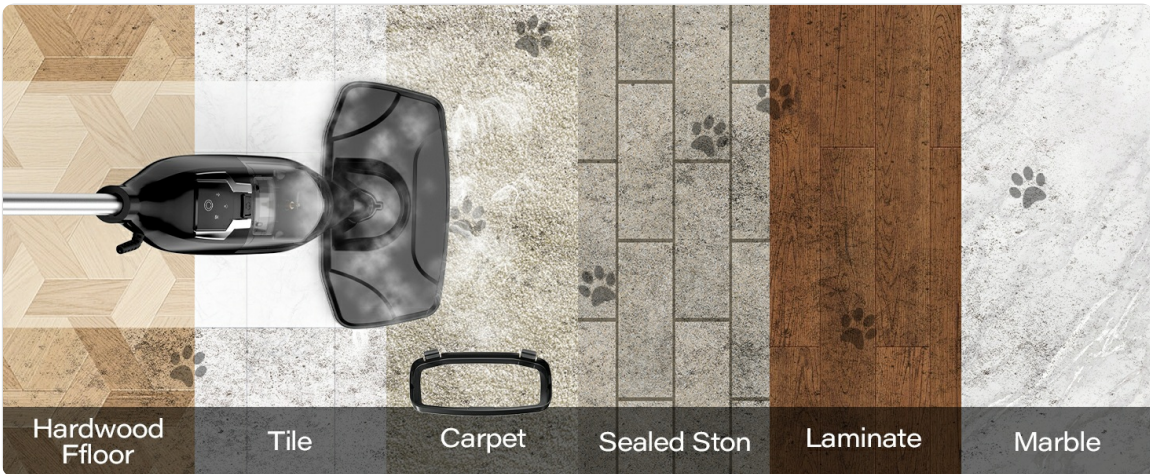


Figure 12: Tackle tough grease on stovetops and grills with the handheld steamer.

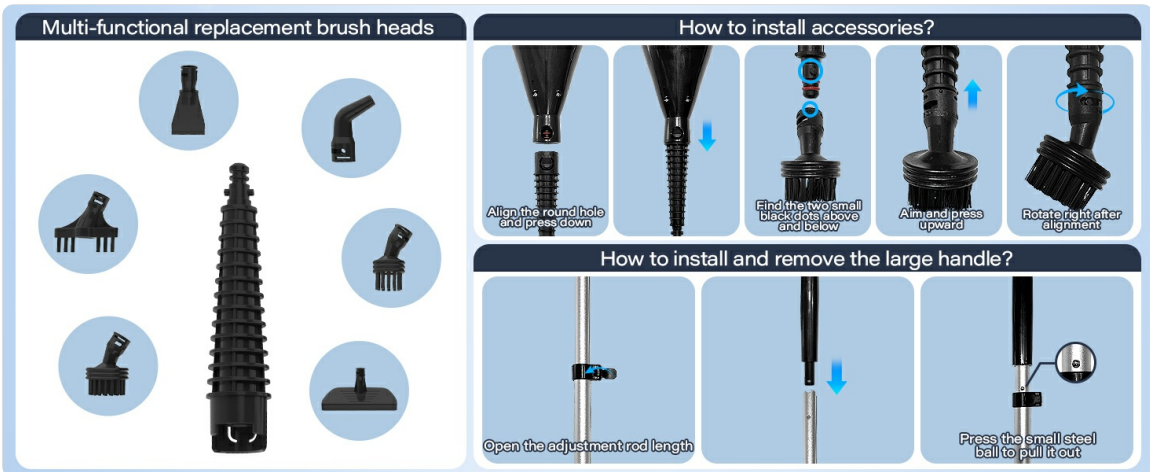


Figure 13: Steam clothes and refresh car seats with specialized attachments.



Figure 14: Choose between two steam levels for optimal cleaning performance.

MAINTENANCE

- **Cleaning Mop Pads:** The microfiber mop pads are washable and reusable. After each use, remove the pad and wash it with mild detergent. Air dry or tumble dry on low.
- **Empty Water Tank:** After each use, empty any remaining water from the tank to prevent mineral buildup.
- **Wipe Down Unit:** Wipe the exterior of the steam mop with a damp cloth to remove any dirt or residue.
- **Store Properly:** Store the steam mop in a dry, cool place. The self-standing design and winding device for the cord make storage convenient.



Figure 15: Washable microfiber pads for easy maintenance.

TROUBLESHOOTING

- **No Steam:** Ensure the water tank is filled and properly seated. Check if the unit is plugged in and

the power button is pressed. Allow sufficient time for heating (approx. 12 seconds).

- **Low Steam Output:** Verify the selected steam level. Ensure the water tank is not empty. Descale the unit if mineral buildup is suspected (refer to manufacturer's descaling instructions, if provided separately).
- **Water Leaking:** Check that the water tank is securely attached and not overfilled. Ensure all attachments are properly connected.
- **Unit Not Turning On:** Confirm the power cord is fully plugged into a working outlet. Check for any tripped circuit breakers.

SPECIFICATIONS

Feature	Specification
Brand	Leiksen
Model Name	Leiksen-Steam Mop
Special Features	Adjustable Height, Large Capacity Tank, Rapid Heat Up, Removable Tank, Steam Control
Surface Recommendation	Hardwood, Tile, Laminate, Sealed Stone, Marble, Carpet and other floors; Kitchen, Windows, Furniture, Toys, Grout lines, Sink, Toilet lid bolts, Ironing garment, etc.
Included Components	Carpet glider x1, Accessory adaptor x1, Angle nozzle x1, Small cloth x1, Microfiber pads x2, Window cleaning tools x1, Scraping tool x1, Steam Mop x1, 23 ft power cord x1, Removable water tank x1, Telescopic rod and grip x1, Round brush x1, Flat brush x1, Brass Brush x1, Ironing brush x1, Large round brush x1
Wattage	1200 watts
Color	black
Power Source	hand_powered
Capacity	1.3 Pounds (water tank capacity)
Item Weight	5.61 pounds
Package Dimensions	18.31 x 13.62 x 5.16 inches

WARRANTY AND SUPPORT

For warranty information, product support, or to purchase replacement parts and accessories, please refer to the contact information provided with your product packaging or visit the official Leiksen website. Keep your purchase receipt for warranty claims.