

sparefixd C00230134

sparefixd Oven Fan Motor Instruction Manual

Model: Equivalent to Part Number C00230134

Brand: sparefixd

1. OVERVIEW

This manual provides essential information for the installation, operation, maintenance, and troubleshooting of the sparefixd Oven Fan Motor, which is an equivalent replacement for original part number C00230134. This component is designed to circulate hot air within your oven, ensuring even cooking and efficient performance. Proper installation and care are crucial for the longevity and optimal function of your appliance.

1.1 Product Compatibility

This fan motor is compatible with a wide range of Hotpoint oven and cooker models. To ensure correct fitment, always verify your appliance's model number against the list provided below or consult your oven's original documentation. The model number is typically located inside the oven door on the main body, sometimes hidden behind the door seal, usually towards the bottom. For separate hobs, the model number is often found on the underside.

Key Compatible Hotpoint Oven Models include:

- C366EKH, C366ESH, C366EWH
- BD42SS2, BD42SSMK2, BD42SSMK2T, BD51D, BD51G, BD51N, BD51X, BD52B, BD52K, BD52N, BD52P, BD52S, BD52T, BD62SS, BD81B, BD81G, BD81N, BD81P, BD81S, BD81YS
- BS11B, BS11P, BS21B, BS21P, BS22B, BS22G, BS22N, BS22P, BS31C, BS31E, BS32B, BS32K, BS32N, BS32P, BS41B, BS41D, BS41G, BS41N, BS41P, BS41X, BS42B, BS42K, BS42N, BS42P, BS45AL, BS52SS, BS61B, BS61P, BS61S, BS61YS, BS62B, BS62K, BS62N, BS62P, BS62S, BS72SS
- BU61B, BU61P, BU62B, BU62G, BU62N, BU62P, BU62S, BU62X, BU62YS, BU65AL, BU71B, BU71K, BU71N, BU71P, BU72B, BU72K, BU72N, BU72P, BU72S, BU82SS
- C220EC, C220ECH, C220EW, C220EWH, C262EKH, C262ESH, C262EWH, C361EWH, C362EKH, C362ESH, C362EWH, C363EXH
- DD77CH, DD77I, DE47X, DE47X2, DE77X, DE89X1, DQ47I, DQ47I2, DQ77I, DQ89I1, DT77X
- DY46B, DY46K, DY46W, DY46X

- EDCS51H, EDCW51H, EG20P, EG21C, EG21E, EG21L, EG22N, EG32N, EG32P, EG32S, EG51G, EG51N, EG51P, EG52N, EG52P, EG52S, EG53N, EG53P, EG53S, EG54G, EG54P, EG54T, EG71G, EG71N, EG71P, EG72N

2. SAFETY INFORMATION

Before attempting any installation or repair, please read and understand all safety warnings. Failure to follow these instructions may result in electric shock, fire, property damage, or personal injury.

- **Disconnect Power:** Always ensure the oven or cooker is completely disconnected from the main power supply before beginning any work. Turn off the circuit breaker or remove the fuse.
- **Professional Installation:** Installation of this part should ideally be performed by a qualified technician. If you are unsure about any step, seek professional assistance.
- **Wear Protective Gear:** Use appropriate personal protective equipment, such as gloves and eye protection, to prevent injury.
- **Handle with Care:** Oven components can have sharp edges. Handle the fan motor and surrounding parts carefully.
- **Verify Connections:** Ensure all electrical connections are secure and correctly reconnected before restoring power.

3. SETUP AND INSTALLATION

This section outlines the general steps for replacing an oven fan motor. Specific procedures may vary slightly depending on your oven model. Refer to your oven's service manual for detailed instructions if available.

3.1 Required Tools

- Screwdrivers (Phillips and flathead)
- Wrench or nut driver set
- Pliers
- Multimeter (for testing, optional)

3.2 Installation Steps

1. **Disconnect Power:** Ensure the oven is completely unplugged or the circuit breaker is off.
2. **Access the Fan Motor:** Depending on your oven model, you may need to remove the rear panel of the oven, or access it from inside the oven cavity by removing the fan cover.
3. **Remove the Fan Blade:** Carefully unscrew the nut holding the fan blade to the motor shaft. Remove the fan blade and set it aside.
4. **Disconnect Wiring:** Note the position of the electrical connections. Take a photograph if necessary. Disconnect the wires from the old fan motor.
5. **Remove Old Motor:** Unscrew any mounting screws or bolts securing the old fan motor to the oven structure. Carefully remove the old motor.
6. **Install New Motor:** Position the new sparefixd fan motor in place and secure it with the mounting screws or bolts. Ensure it is firmly seated.
7. **Connect Wiring:** Reconnect the electrical wires to the new motor, ensuring they match the original configuration.

8. **Reattach Fan Blade:** Place the fan blade back onto the motor shaft and secure it with the nut. Ensure the blade spins freely without obstruction.
9. **Reassemble Oven:** Replace any panels or covers that were removed.
10. **Restore Power and Test:** Plug the oven back in or turn on the circuit breaker. Test the oven's fan function to ensure the new motor operates correctly.



Figure 1: The spare oven Fan Motor with its attached fan blade, viewed from an angle showing the motor housing and electrical connectors.



Figure 2: An exploded view of the oven fan motor, illustrating the separate fan blade and the motor unit with its internal components and mounting plate.

4. OPERATING PRINCIPLES

The oven fan motor is a critical component in convection ovens. Its primary function is to circulate hot air evenly throughout the oven cavity. This circulation helps to:

- **Ensure Uniform Cooking:** By distributing heat consistently, the fan motor prevents hot spots and cold spots, leading to more evenly cooked food.
- **Reduce Cooking Time:** Convection cooking, facilitated by the fan, often allows for faster cooking times compared to conventional ovens.
- **Improve Browning:** The circulating air helps to brown food more effectively and consistently.

The fan motor activates when the oven is set to a convection baking or roasting mode. It operates continuously during the cooking cycle to maintain air movement.

5. MAINTENANCE

The sparefixd Oven Fan Motor is designed for durability and requires minimal routine maintenance.

However, periodic inspection can help identify potential issues early.

- **Regular Cleaning:** Ensure the fan blade and surrounding area within the oven cavity are free from food debris and grease buildup. Always disconnect power before cleaning.
- **Inspect for Obstructions:** Periodically check that nothing is obstructing the fan blade's rotation.
- **Listen for Unusual Noises:** Pay attention to any new or unusual noises coming from the fan during oven operation. This could indicate wear or a loose component.
- **Professional Inspection:** If you suspect an issue or notice a significant change in oven performance, consider having a qualified technician inspect the fan motor and other oven components.

6. TROUBLESHOOTING

This section addresses common issues related to oven fan motors. Always ensure the oven is disconnected from power before performing any inspection or repair.

6.1 Common Issues and Solutions

Problem	Possible Cause	Solution
Fan motor not running	No power to oven; faulty motor; loose wiring; control board issue	Check oven power supply; inspect wiring connections; test motor for continuity (if qualified); consult a technician for control board diagnosis.
Fan making loud or unusual noises	Fan blade obstruction; worn motor bearings; loose mounting screws	Disconnect power and check for debris around fan blade; tighten mounting screws; if bearings are worn, motor replacement is typically required.
Oven not heating evenly	Fan motor not circulating air; faulty heating element	Verify fan motor operation; check heating elements for visible damage or test for continuity (if qualified).
Fan blade not spinning freely	Debris caught in blade; bent blade; motor shaft obstruction	Disconnect power and remove any obstructions; inspect blade for damage; if bent, replace blade or motor assembly.

If troubleshooting steps do not resolve the issue, it is recommended to contact a qualified appliance repair technician.

7. SPECIFICATIONS

The sparefixd Oven Fan Motor is manufactured to meet or exceed the specifications of the original equipment part.

Feature	Detail
Product Type	Oven Fan Motor
Equivalent Part Number	C00230134
Brand	sparefixd

Feature	Detail
Manufacturer	Sparefixd
First Available	May 27, 2025

7.1 Physical Characteristics

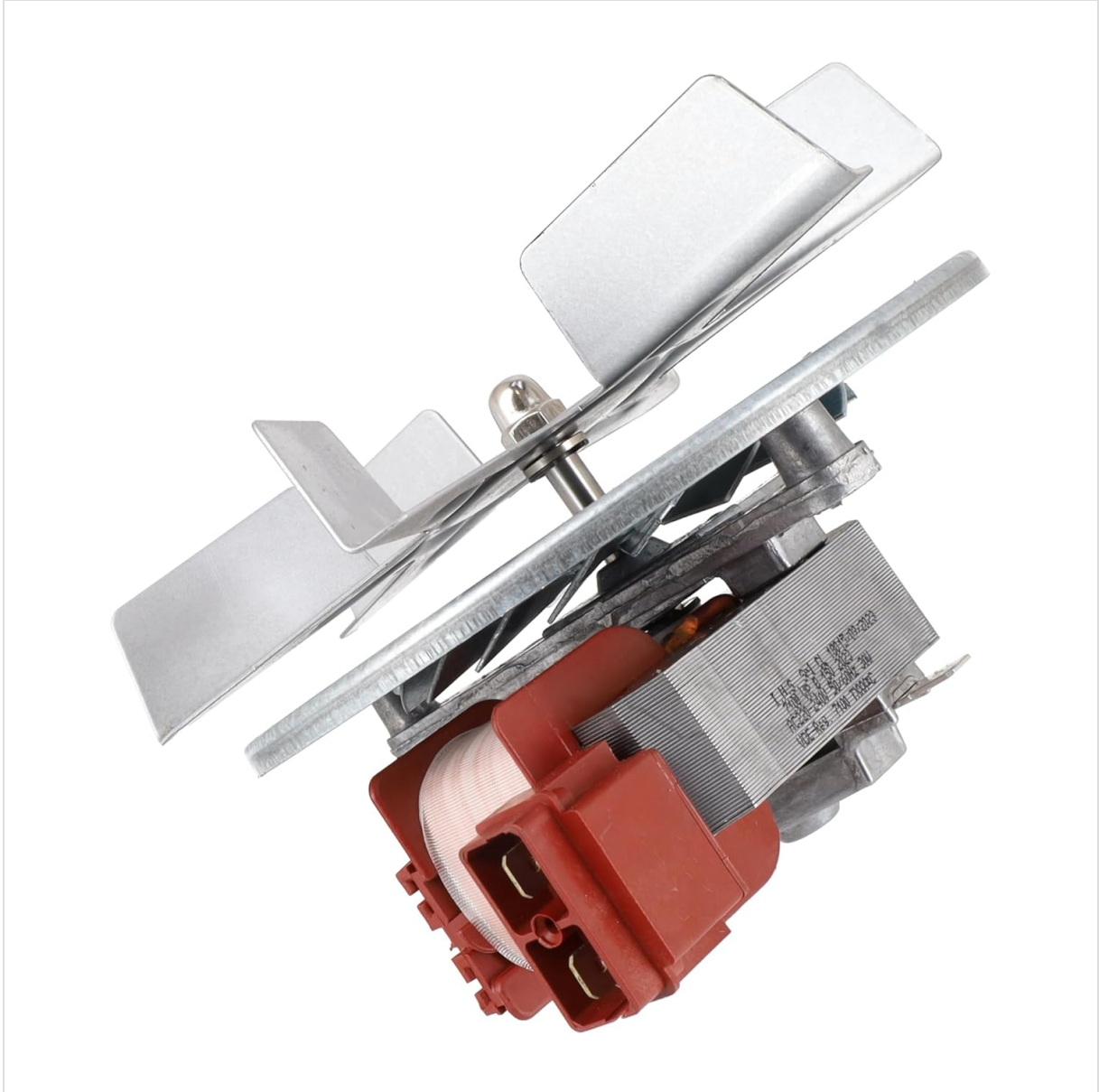


Figure 3: Side view of the Sparefixd Oven Fan Motor, highlighting the electrical connection terminals and the motor's core structure.



Figure 4: The sparefixd Oven Fan Motor and fan blade assembly, shown from an elevated perspective to illustrate its compact design.

8. WARRANTY AND SUPPORT

Specific warranty details for this sparefixd product are not provided in the available information. Please refer to the retailer or manufacturer's website for current warranty policies.

8.1 Customer Support

For technical assistance, installation queries, or further product information, please contact the sparefixd customer support team or the retailer from whom the product was purchased. When contacting support, please have your product details and any relevant oven model numbers ready.