

## HOMEFORT PG-02SC013A-ABK03

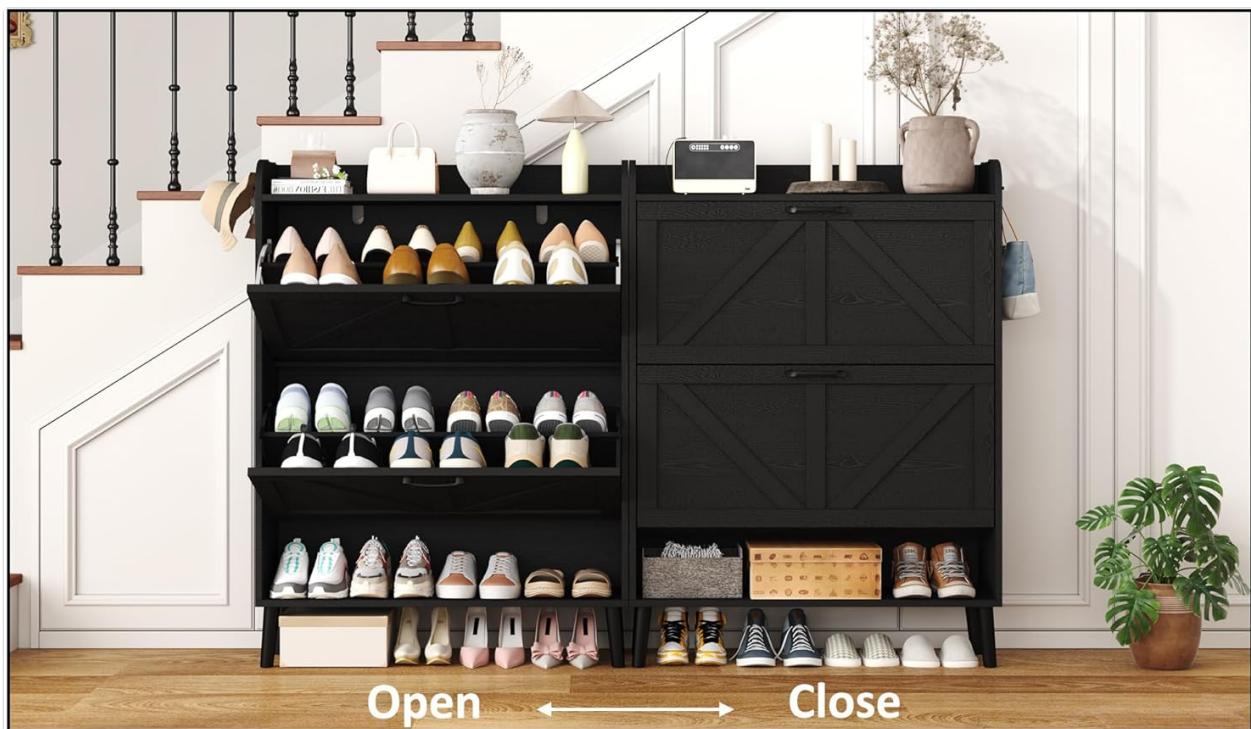
# HOMEFORT Farmhouse Shoe Storage Cabinet User Manual

Model: PG-02SC013A-ABK03

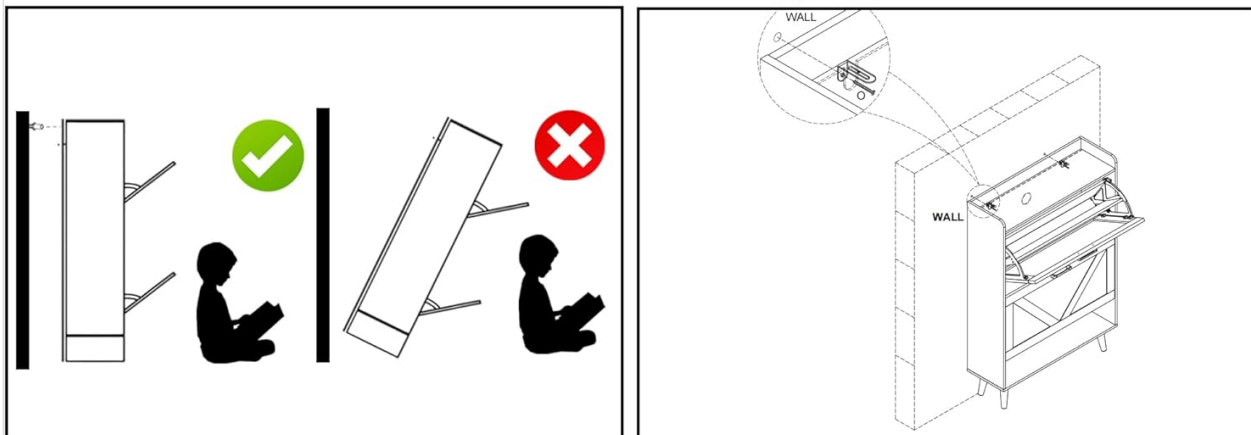
## 1. IMPORTANT SAFETY INFORMATION

Please read and understand all instructions before assembly and use. Keep this manual for future reference.

- **Anti-Tipping Device:** This cabinet includes an anti-tipping device. It is crucial to install this device to prevent the cabinet from tipping over, especially in households with children or pets. Failure to do so can result in serious injury.
- **Weight Limits:** Do not exceed the recommended weight capacity for shelves and the top surface. Overloading can compromise stability and cause damage.
- **Placement:** Place the cabinet on a flat, level surface. Uneven surfaces can lead to instability.
- **Child Safety:** Keep small parts and packaging materials away from children during assembly. Do not allow children to climb on or play with the cabinet.
- **Maintenance:** Regularly check all fasteners to ensure they remain tight. Retighten as necessary.



## Shoe Cabinet with Two Flip Drawers



## Anti-tipping devices for extra safety

Image 1.1: Diagram illustrating the importance and method of installing the anti-tipping device for safety. The left side shows a cabinet without the device tipping over, while the right side shows a cabinet securely fastened to the wall.

## 2. PACKAGE CONTENTS

Verify that all components are present before beginning assembly. If any parts are missing or damaged, please contact customer support.

- Shoe Storage Cabinet Components (various panels, hardware)
- Assembly Instruction Manual
- Anti-Tipping Device Kit

## 3. ASSEMBLY INSTRUCTIONS

Assembly is designed to be straightforward. Follow these steps carefully. It is recommended to have a second person assist with certain steps.

1. **Unpack and Identify Parts:** Lay out all components on a clean, soft surface to prevent scratches. Refer to the included parts list to identify each piece.

2. **Assemble the Main Frame:** Connect the side panels to the base and top panels using the provided hardware. Ensure all connections are secure.
3. **Install Flip Drawers:** Attach the drawer mechanisms to the cabinet frame. Insert the flip drawer panels into their respective mechanisms.
4. **Insert Adjustable Shelves:** Place the internal shelves within the flip drawers. These shelves are adjustable to accommodate different shoe heights.
5. **Attach Wood Legs:** Securely fasten the solid wood legs to the bottom of the cabinet.
6. **Install Anti-Tipping Device:** Following the specific instructions in the anti-tipping kit, attach the device to the back of the cabinet and secure it to a wall stud.



Image 3.1: The fully assembled HOMEFORT Farmhouse Shoe Storage Cabinet, showcasing its design and functionality in an entryway setting.

## Assembly Video

Your browser does not support the video tag.

Video 3.1: An official HOMEFORT video demonstrating the assembly process and features of the Farmhouse Shoe Storage Cabinet.

## 4. OPERATING INSTRUCTIONS

This shoe storage cabinet is designed for efficient organization and ease of use.

- **Flip Drawers:** Gently pull the handles to open the flip drawers. Each drawer contains two internal racks for shoe storage.
- **Adjustable Shelves:** The internal panel within each flip drawer is removable and can be adjusted to two positions. This allows for accommodating various types of footwear, including high heels and boots, by creating more vertical space.
- **Open Storage Shelves:** The cabinet features two open storage shelves at the bottom, suitable for frequently used shoes or decorative items.
- **Top Surface:** The spacious countertop shelf can be used for storing books, keys, photo albums, or other decorative items. A top fence helps prevent items from falling off.

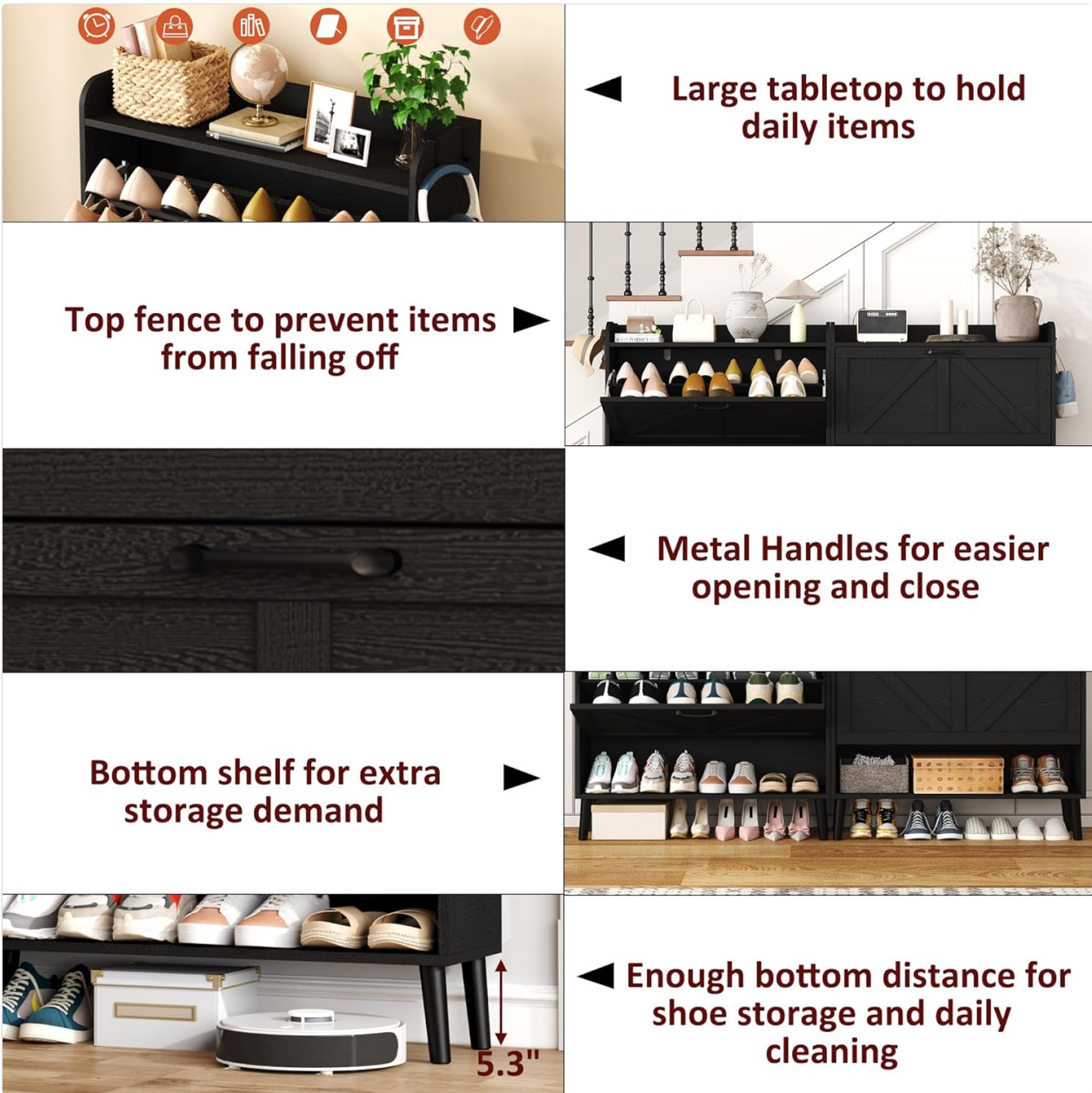


Image 4.1: Detailed view of the cabinet's features, including the large tabletop, metal handles, bottom shelf, and the 5.3-inch clearance for cleaning.





Image 4.2: The cabinet with its flip drawers open, demonstrating the internal adjustable shelves and how various shoe types can be stored.

## 5. MAINTENANCE

Proper care will extend the life and appearance of your shoe cabinet.

- **Cleaning:** Wipe surfaces with a soft, damp cloth. Avoid harsh chemicals or abrasive cleaners, which can damage the finish.
- **Dusting:** Regularly dust the cabinet to prevent buildup.
- **Spills:** Clean up spills immediately to prevent staining or damage to the engineered wood.
- **Sunlight Exposure:** Avoid prolonged exposure to direct sunlight to prevent fading or discoloration.

## 6. TROUBLESHOOTING

If you encounter any issues with your shoe cabinet, refer to the following common problems and solutions:

Problem	Possible Cause	Solution
---------	----------------	----------

Problem	Possible Cause	Solution
Cabinet wobbles or is unstable.	Uneven floor; loose fasteners; anti-tipping device not installed.	Ensure the cabinet is on a level surface. Check and tighten all assembly fasteners. Install the anti-tipping device securely to a wall stud.
Flip drawers do not close smoothly.	Shoes obstructing the mechanism; misaligned drawer components.	Ensure shoes are properly placed and not interfering with the closing mechanism. Check drawer runners for proper alignment and reassemble if necessary.
Shoes do not fit in drawers.	Internal shelf height is too low.	Adjust or remove the internal shelf within the flip drawer to create more vertical space for taller footwear.

## 7. SPECIFICATIONS

Feature	Detail
Brand	HOMEFORT
Model Name	Shoe Cabinet
Item Model Number	PG-02SC013A-ABK03
Color	Black
Product Dimensions	9.45"D x 30"W x 43.3"H
Item Weight	39 Pounds
Material	Engineered Wood
Installation Type	Freestanding
Special Features	Anti-Tipping, Dustproof, Removable Shelf, Scratch Resistant
Number of Drawers	2 (Flip Doors)
Number of Shelves	2 (Open bottom shelves)
Assembly Required	Yes

**Note: The storage quantity depends on the size and style of shoes**

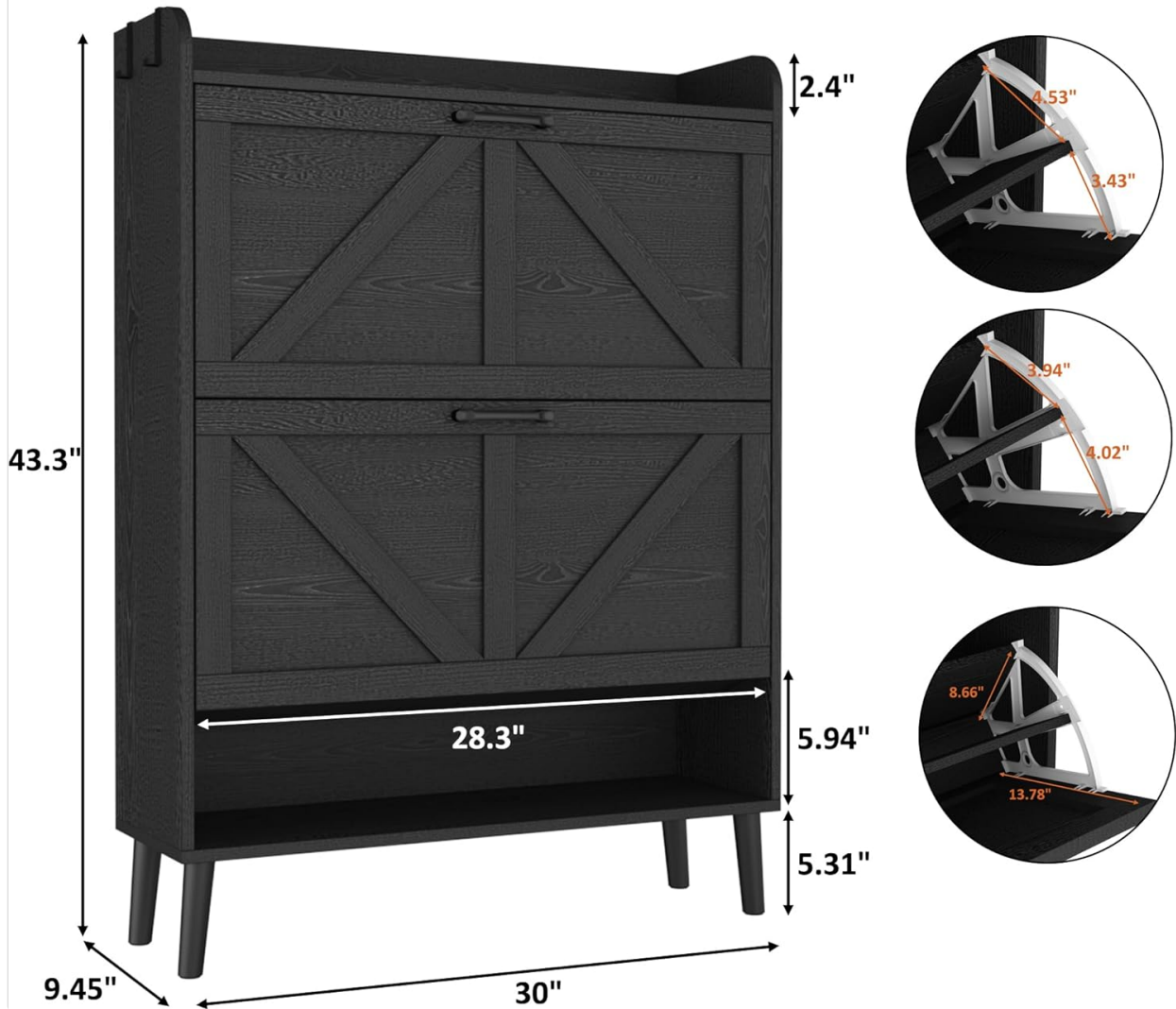


Image 7.1: A diagram providing precise measurements of the shoe cabinet, including width, depth, and height, as well as internal drawer dimensions.

## 8. WARRANTY AND SUPPORT

HOMEFORT products are manufactured with quality and care. For any questions, concerns, or warranty claims, please contact HOMEFORT customer support through your retailer or the official HOMEFORT website. Please have your model number (PG-02SC013A-ABK03) and purchase information ready.