

Manuals+

[Q & A](#) | [Deep Search](#) | [Upload](#)

Manuals.plus /

› [KEYCOOL](#) /

› KEYCOOL K21 Mechanical Numeric Keypad User Manual

KEYCOOL K21

KEYCOOL K21 Mechanical Numeric Keypad User Manual

Model: K21 | Brand: KEYCOOL

INTRODUCTION

Thank you for choosing the KEYCOOL K21 Mechanical Numeric Keypad. This versatile keypad offers triple-mode connectivity (wired, Bluetooth 5.0, and 2.4GHz wireless), hot-swappable switches, and customizable RGB lighting. Designed for efficiency and comfort, it is compatible with a wide range of operating systems including Windows, Mac, Linux, Android, and iOS. This manual provides detailed instructions to help you set up and operate your new keypad effectively.

KEY FEATURES

- **Triple Mode Connectivity:** Seamlessly switch between wired (USB-C), Bluetooth 5.0, and 2.4GHz wireless modes for flexible use across multiple devices.
- **Hot-Swappable Switches:** Customize your typing experience by easily changing 3-pin or 5-pin mechanical switches without soldering.
- **Dynamic RGB Backlighting:** Personalize your keypad with adjustable and customizable RGB lighting effects.
- **Gasket Mount Design:** Enjoy a pleasant typing sound and feel thanks to the gasket-type installation structure with PORON foam tape.
- **Ergonomic Design:** Features a sloped keyboard and durable PBT keycaps for comfortable and long-term use, ideal for financial accounting and general data entry.
- **Programmable Keys:** Customize key functions and lighting effects using the dedicated software.

PACKAGE CONTENTS

Please check the package for the following items:

- KEYCOOL K21 Mechanical Numeric Keypad
- USB-C to USB-A Cable
- 2.4G Wireless Receiver (stored in the keypad)
- Keycap Puller
- Switch Puller
- Spare Mechanical Switches (quantity may vary)
- User Manual (this document)



Figure 1: Included Accessories

This image displays the standard accessories that come with your KEYCOOL K21 keypad, including the USB-C cable for wired connection and charging, tools for switch and keycap removal, and additional switches for customization.

SETUP

1. Power On/Off and Ports

Locate the Keyboard ON/OFF switch, Type-C Port, and 2.4G slot on the side of the keypad.

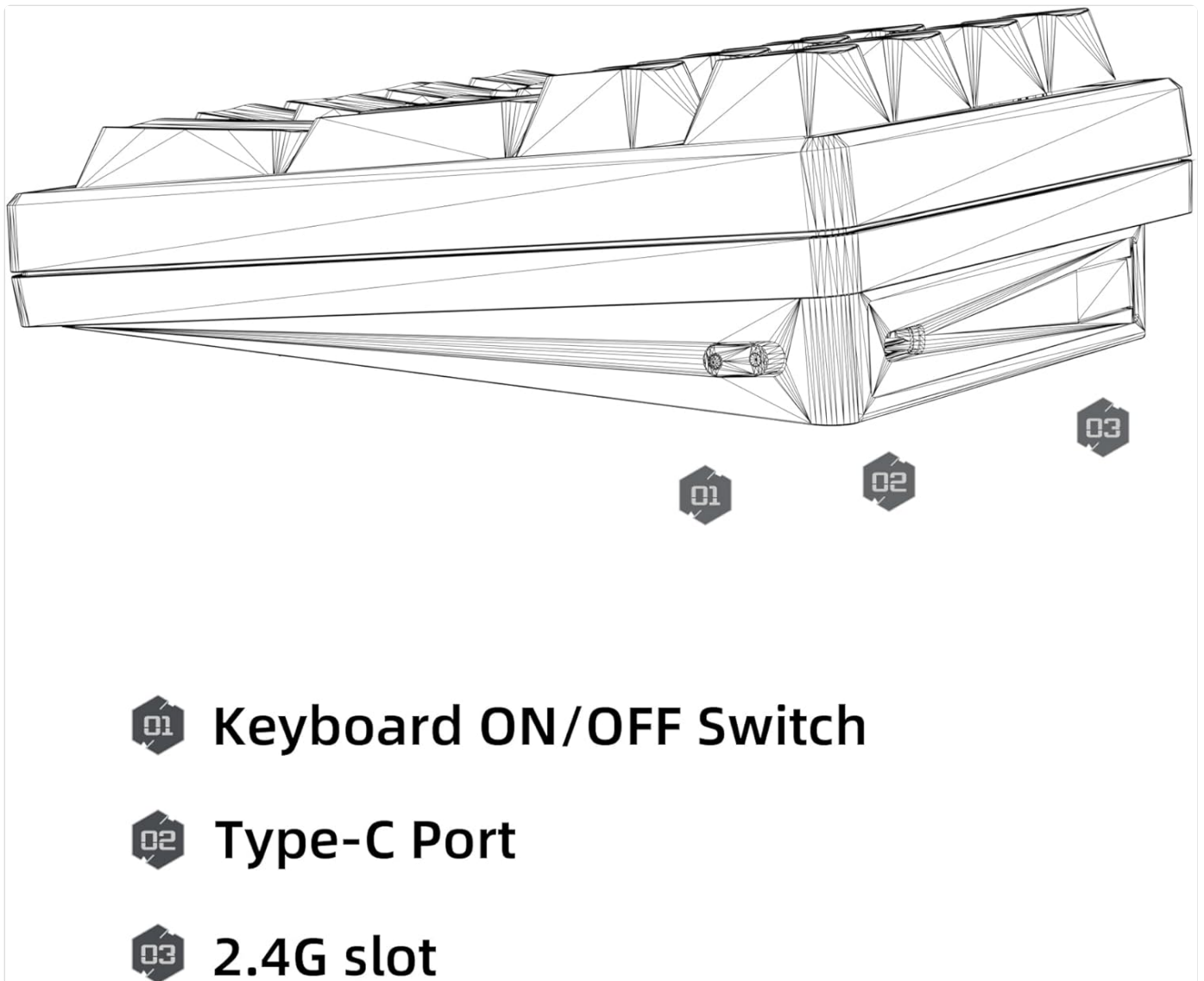


Figure 2: Keypad Ports and Switch

This image illustrates the physical layout of the keypad's side, showing the power switch, the USB-C charging and wired connection port, and the storage slot for the 2.4G wireless receiver.

2. Connectivity Modes

The K21 keypad supports three connection methods:

1. 2.4GHz Wireless Mode:

- a. Turn on the keypad using the ON/OFF switch.
- b. Remove the 2.4G wireless receiver from its storage slot.
- c. Plug the receiver into an available USB port on your computer.
- d. The keypad should automatically connect. An indicator light will confirm the connection.

2. Bluetooth 5.0 Mode:

- a. Turn on the keypad.
- b. Press and hold the **Fn** key and a designated Bluetooth key (e.g., **Fn+1**, **Fn+2**, or **Fn+3**) to enter pairing mode. The indicator light will flash rapidly.
- c. On your device (laptop, tablet, smartphone), enable Bluetooth and search for "KEYCOOL K21" or a similar device name.
- d. Select the keypad to pair. The indicator light will become solid once connected.
- e. The keypad can store up to three Bluetooth device pairings.

3. Wired Mode:

- a. Connect the USB-C end of the provided cable to the keypad's Type-C port.
- b. Connect the USB-A end to an available USB port on your computer.
- c. The keypad will automatically switch to wired mode and begin charging.

3. Driver and Software Installation

For full customization of key functions and RGB lighting, it is recommended to install the KEYCOOL K21 software. The official driver download site is:

www.kc-keycool.com

Please visit the website to download the latest software compatible with your operating system. Follow the on-screen instructions for installation.

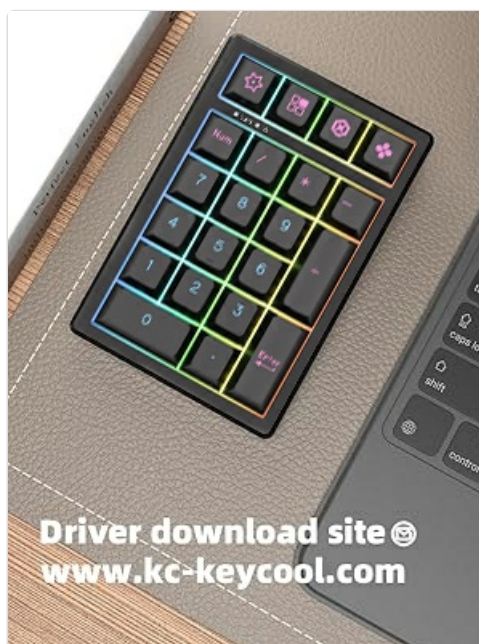


Figure 3: Driver Download Information

This image provides the web address for downloading the necessary drivers and software for the KEYCOOL K21 keypad, enabling advanced customization features.

OPERATING INSTRUCTIONS

1. Basic Keypad Functions

The K21 keypad features standard numeric keys, arithmetic operators, and additional function keys. The **Num** key activates or deactivates the numeric lock function.

2. RGB Lighting Control

The keypad offers various RGB lighting effects and colors. Use the following key combinations:

- **Fn + Back:** Turn ON/OFF the backlight.
- **Fn + 6:** Switch between different lighting effects.
- **Fn + 7:** Switch between different lighting colors.



Figure 4: RGB Control and Hot-Swap Features

This image highlights the hot-swappable nature of the switches and provides a visual guide to the function key combinations for controlling the RGB backlight effects and colors.

3. Hot-Swapping Switches

The K21 keypad supports hot-swappable 3-pin and 5-pin mechanical switches. To change a switch:

1. Carefully remove the keycap using the provided keycap puller.
2. Use the switch puller to gently grip the top and bottom clips of the switch.
3. Pull the switch straight up to remove it from the PCB.
4. Align the pins of the new switch with the holes on the PCB. Ensure the pins are straight.
5. Press the new switch firmly into place until it clicks.
6. Replace the keycap.



Figure 5: Hot-Swappable Design

This image visually demonstrates the hot-swappable capability of the KEYCOOL K21, showing how switches can be easily removed and replaced without soldering.

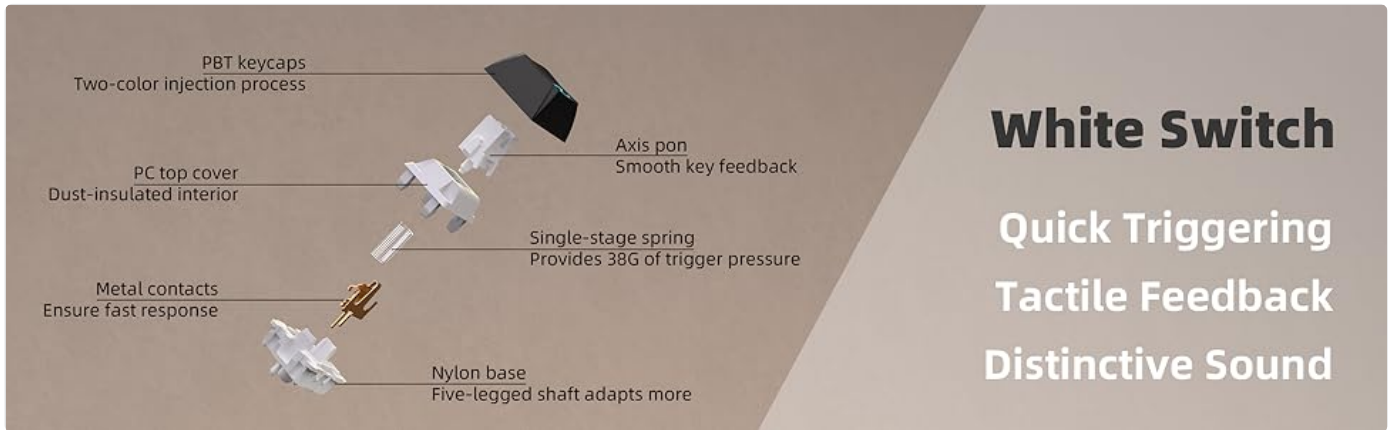


Figure 6: Mechanical Switch Components

This diagram provides an exploded view of a mechanical switch, detailing its internal components and highlighting features like quick triggering, tactile feedback, and distinctive sound.

4. Programmable Keys and Software

Utilize the KEYCOOL K21 software (download from www.kc-keycool.com) to remap keys, create macros, and customize lighting effects. The software allows for advanced personalization to suit your workflow.

Personalized Programmable

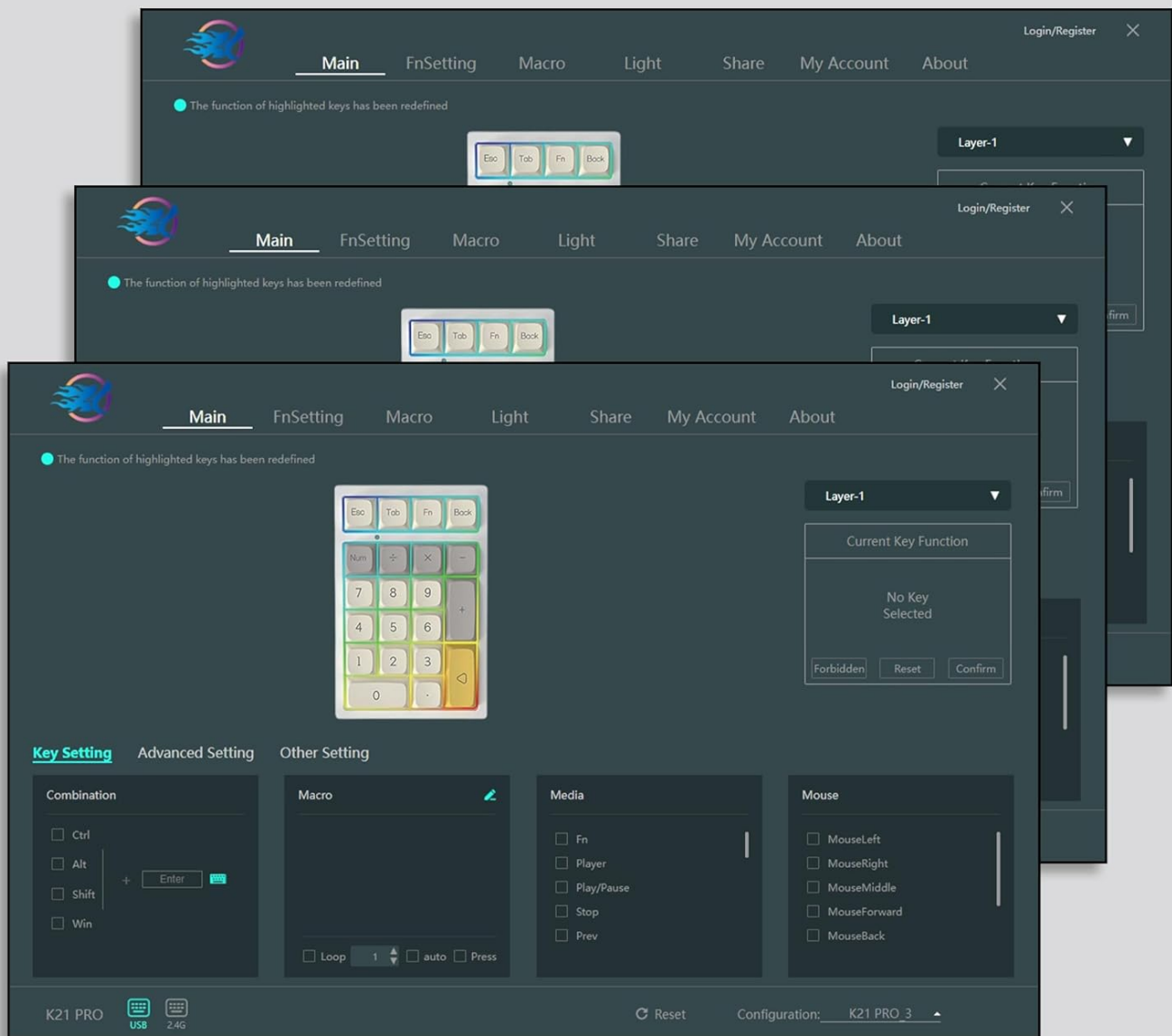


Figure 7: Software Interface for Customization

This image displays various screens of the KEYCOOL K21's customization software, illustrating options for key remapping, macro creation, and lighting adjustments.

5. Volume Roller

The integrated rotary knob functions as a volume roller for your connected PC or iPad. It can also be programmed as an additional button via the software.

MAINTENANCE

- **Cleaning:** Use a soft, dry cloth to wipe the keypad. For deeper cleaning, remove keycaps and use compressed air to clear debris. Avoid liquid cleaners directly on the switches or PCB.
- **Battery Care:** To prolong battery life, avoid fully discharging the keypad frequently. Charge it when the low battery indicator appears.
- **Storage:** Store the keypad in a cool, dry place away from direct sunlight and extreme temperatures.

TROUBLESHOOTING

1. Keypad Not Responding

- **Check Power:** Ensure the keypad is turned ON and has sufficient battery charge.
- **Connectivity:**
 - **2.4GHz:** Verify the receiver is securely plugged into a USB port. Try a different USB port.
 - **Bluetooth:** Re-pair the device. Ensure Bluetooth is enabled on your host device and the keypad is in pairing mode.
 - **Wired:** Ensure the USB-C cable is properly connected to both the keypad and the computer. Try a different cable or USB port.
- **Reset:** If unresponsive, try resetting the keypad by holding **Fn + Esc** for 5 seconds.

2. Driver Issues / Software Not Detecting Keypad

- Ensure you have downloaded the correct driver from www.kc-keycool.com.
- Connect the keypad in wired mode when attempting to use the software for the first time or if experiencing detection issues.
- Check your device's Device Manager (Windows) or System Information (Mac) to see if the keypad is recognized, even if with a "driver error." Reinstalling the driver may resolve this.

3. RGB Lighting Not Working

- Ensure the backlight is turned ON using **Fn + Back**.
- Check battery level; low battery might disable RGB.
- Use the software to verify RGB settings.

SPECIFICATIONS

Model	K21
Layout	21-Key Numeric Keypad
Connectivity	Bluetooth 5.0, 2.4GHz Wireless, USB-C Wired
Switch Type	Mechanical (Hot-swappable 3-pin/5-pin)
Backlighting	RGB
Battery Capacity	1500mAh
Polling Rate	1000Hz
Compatible Systems	Windows, Mac, Linux, Android, iOS
Material	Plastic, Foam (PBT Keycaps)
Dimensions	Approx. 3.62 x 5.35 x 1.61 inches (9.2 x 13.6 x 4.1 cm)
Weight	Approx. 0.48 lbs (0.22 kg)



Figure 8: Product Overview and Specifications

This image provides a visual overview of the KEYCOOL K21 keypad in a typical usage scenario, accompanied by a summary of its key specifications including model, layout, battery, polling rate, weight, size, and system compatibility.

WARRANTY AND SUPPORT

The KEYCOOL K21 Mechanical Numeric Keypad comes with a **2-Year Manufacturer Warranty** from the date of purchase. This warranty covers defects in materials and workmanship under normal use.

For warranty claims, technical support, or any inquiries, please contact KEYCOOL customer service through the official website (www.kc-keycool.com) or your point of purchase.