

B0FD6XV41L

Generic Automatic Ultrasound Brush Instruction Manual

Model: B0FD6XV41L

INTRODUCTION

The Generic Automatic Ultrasound Brush is designed to provide a comprehensive and efficient oral cleaning experience. Featuring a U-shaped design, it is suitable for adult mouths, offering 360-degree tooth wrapping for deep cleaning and gum protection. The device is equipped with three brushing modes (strong, comfortable, massaging) and incorporates a blue LED light for use with whitening gel (not included). Its IPX7 waterproof rating ensures easy cleaning and reuse. The brush head is made from soft, resistant food-grade silicone and is removable for convenience. With wireless ultra-high-speed charging, the high-capacity battery provides up to 7 days of use with just 1 hour of charge.

PRODUCT OVERVIEW

Size



Figure 1: Product Dimensions. This image displays the Automatic Ultrasound Brush, highlighting its compact dimensions of approximately 11 cm (4.33 inches) in height and 6 cm (2.36 inches) in width, making it suitable for various users.

Teeth whitening equipment



Straight to the
depths



Clean tartar



Teeth whitening

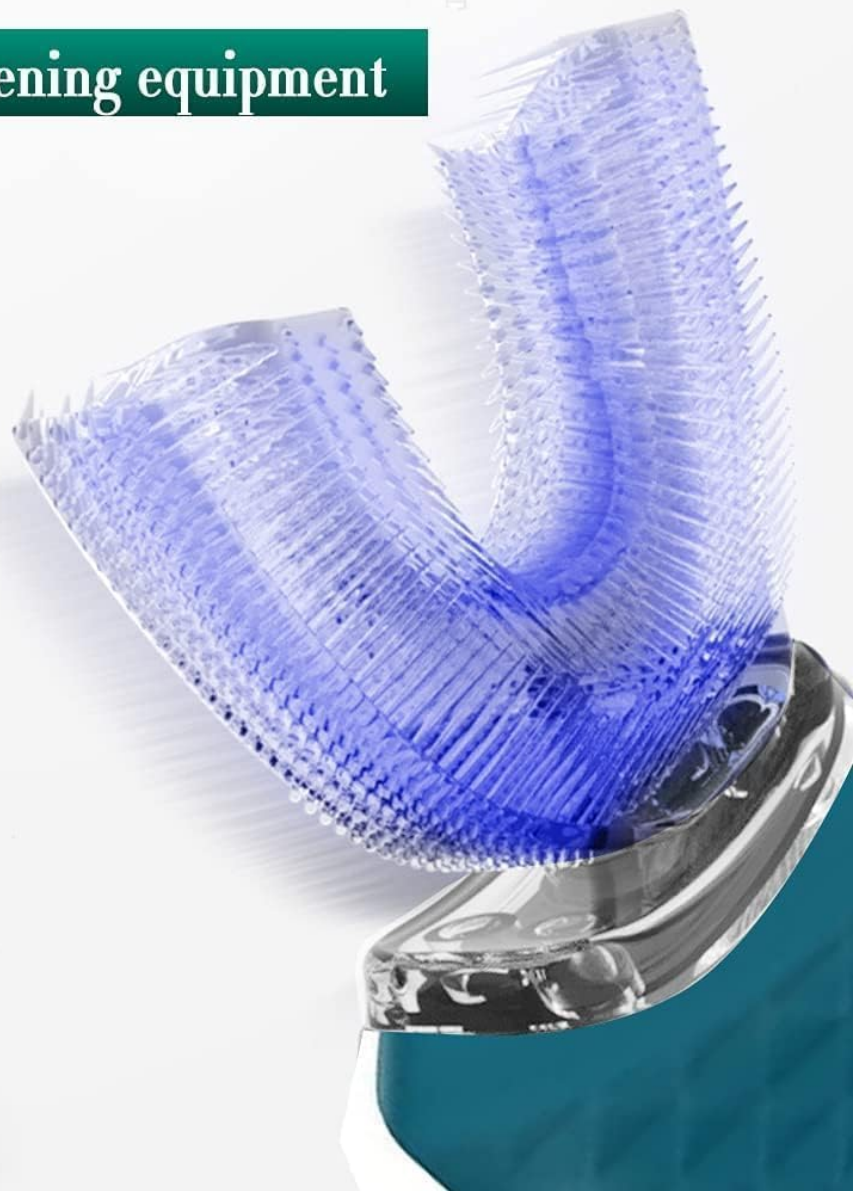


Figure 2: U-Shaped Brush Head. The U-shaped brush head is designed for comprehensive oral cleaning, reaching deep areas to effectively clean tartar and contribute to teeth whitening.

Charge



Figure 3: Wireless Charging. This image illustrates the wireless charging mechanism, showing the toothbrush placed on its charging base. The base features charging contacts for convenient power replenishment.

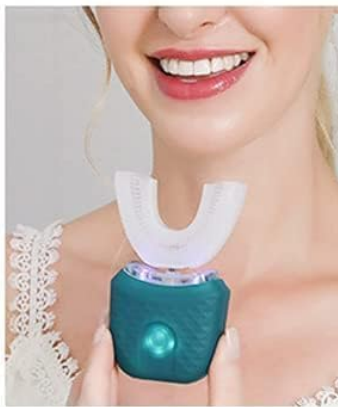


Figure 4: Waterproof Design. This image demonstrates the IPX7 waterproof rating of the toothbrush, showing it being rinsed under water. It also depicts the user placing the U-shaped brush head into their mouth for brushing.



Before use



After use

Figure 5: Whitening Results. A visual comparison showing the potential whitening effects on teeth before and after using the Automatic Ultrasound Brush.

SETUP

Follow these steps to set up your Automatic Ultrasound Brush:

1. **Unpack:** Carefully remove all components from the packaging, including the main device, U-shaped brush head, charging cable, and user manual.
2. **Attach Brush Head:** Securely attach the U-shaped silicone brush head to the main device. Ensure it clicks firmly into place.
3. **Initial Charge:** Before first use, fully charge the device. Connect the charging cable to the charging base and plug it into a suitable power source. Place the toothbrush onto the charging base. The indicator light will show charging status.

Video 1: Unboxing and Setup. This video demonstrates the unboxing and initial setup of the U-shaped automatic toothbrush, including how to apply toothpaste and use the device for brushing.

OPERATING INSTRUCTIONS

To use your Automatic Ultrasound Brush effectively:

1. **Apply Toothpaste:** Apply a foam or liquid toothpaste evenly onto the U-shaped silicone brush head.
2. **Insert into Mouth:** Gently place the brush head into your mouth, ensuring it covers all teeth.
3. **Select Mode:** Press the power button to turn on the device. Press again to cycle through the three brushing modes: strong, comfortable, and massaging. The blue LED light will activate for whitening.
4. **Brush:** Allow the device to operate for the intelligent timing of 45 seconds, which is sufficient for oral cleaning. You may gently move the device from side to side to ensure all surfaces are cleaned.
5. **Rinse:** After the cycle, remove the brush from your mouth and rinse your mouth thoroughly with water.

CLEANING AND MAINTENANCE

Proper cleaning and maintenance will prolong the life of your brush:

- **Brush Head:** After each use, remove the silicone brush head and rinse it thoroughly under running water. It can be cleaned with warm water.
- **Device Body:** The main device is IPX7 impermeable (waterproof). You can rinse it under running water to clean any toothpaste residue. Ensure the charging contacts remain dry before placing it back on the charging base.
- **Storage:** Store the brush in a clean, dry place.

CHARGING

The Automatic Ultrasound Brush features wireless charging:

- **Charging Process:** Place the toothbrush onto its dedicated wireless charging base.
- **Charging Indicator:** The device will indicate when it is charging (e.g., a light indicator).
- **Battery Life:** A full charge typically takes 1 hour and provides approximately 7 days of use.
- **Important:** Always ensure the refill contacts on the toothbrush and the charging base are dry before charging to prevent damage.

SPECIFICATIONS

- **Brand:** Generic
- **Model:** B0FD6XV41L
- **Power Source:** Battery Powered
- **Special Feature:** Waterproof (IPX7)
- **Item Firmness Description:** Medium
- **Age Range (Description):** Adult
- **Toothbrush Head Shape:** U-Shaped
- **Material Feature:** Sustainable (Food-grade silicone head)

TROUBLESHOOTING

If you encounter issues with your Automatic Ultrasound Brush, please refer to the following common solutions:

- **Device Not Turning On:** Ensure the device is fully charged. Connect it to the charging base and allow it to charge for at least 1 hour.
- **Weak Vibration/Light:** This may indicate a low battery. Recharge the device.

- **Ineffective Cleaning:** Ensure the U-shaped brush head is properly attached and that sufficient foam or liquid toothpaste is applied. Make sure to gently move the device to cover all tooth surfaces.
- **Charging Issues:** Verify that the charging cable is securely connected to both the base and the power source. Ensure the charging contacts on both the device and the base are clean and dry.

If problems persist, please contact customer support.

IMPORTANT SAFETY INFORMATION

Please read and understand all safety information before using this product:

- Statements regarding dietary supplements have not been evaluated by the FDA and are not intended to diagnose, treat, cure, or prevent any disease or health condition.
- Keep out of reach of children.
- Do not use if the device or brush head appears damaged.
- Consult a dental professional if you experience any discomfort or adverse reactions during use.
- Only use the provided charging cable and base for charging.

WARRANTY AND SUPPORT

This product comes with a standard manufacturer's warranty. For specific warranty details, please refer to the documentation included in your product packaging or contact the seller directly. If you have any questions, require technical assistance, or need to report a quality issue, please contact the seller for prompt support. They are committed to providing replacements or compensation as soon as possible for any quality-related problems.