

Manuals+

[Q & A](#) | [Deep Search](#) | [Upload](#)

manuals.plus /

> [Minifire](#) /

> [Minifire MFG24F4H 24-inch Full HD 200Hz 1ms Gaming Monitor User Manual](#)

Minifire MFG24F4H

Minifire MFG24F4H 24-inch Full HD 200Hz 1ms Gaming Monitor User Manual

Model: MFG24F4H

1. INTRODUCTION

This manual provides essential information for setting up, operating, and maintaining your Minifire MFG24F4H 24-inch Full HD 200Hz 1ms Gaming Monitor. Please read it thoroughly before use to ensure optimal performance and longevity of your device.



Image: Front view of the Minifire MFG24F4H 24-inch Gaming Monitor, showcasing its slim bezels and stand.

2. PACKAGE CONTENTS

Verify that all items are present in the package:

- Minifire MFG24F4H 24-inch Gaming Monitor
- Monitor Stand (Base and Neck)
- Power Adapter
- Power Cable
- HDMI Cable
- User Manual (this document)

3. SETUP INSTRUCTIONS

3.1 Assembling the Stand

1. Carefully remove the monitor from its packaging, placing it face down on a soft, clean surface to prevent scratches.
2. Attach the stand neck to the monitor's rear panel.
3. Secure the stand base to the neck using the provided screws.
4. Ensure all connections are firm before placing the monitor upright.

DIMENSIONS DU PRODUIT



Installation croustillante

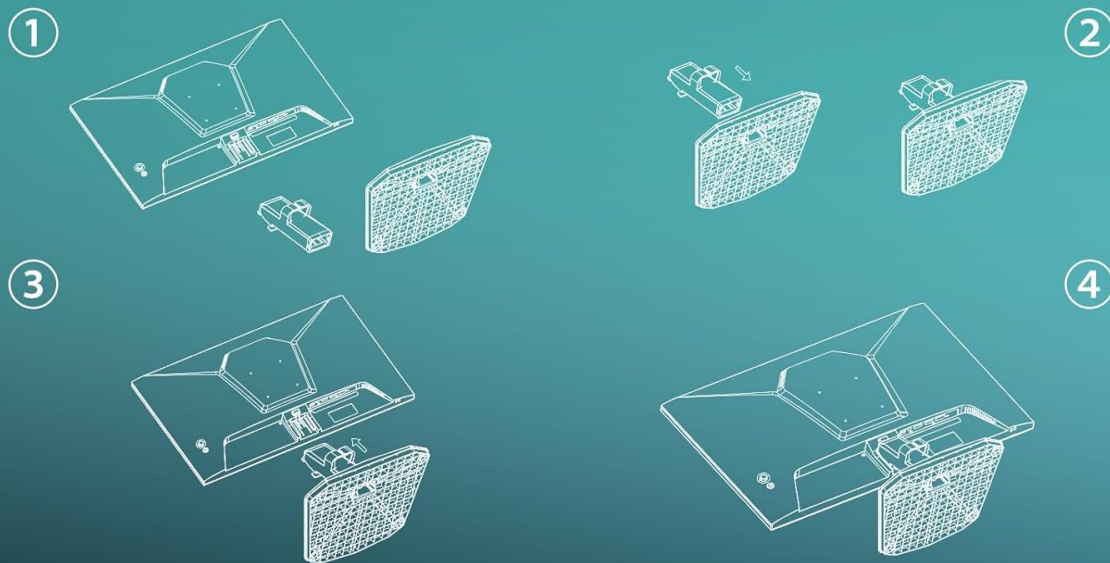


Image: Step-by-step diagram illustrating the assembly of the monitor stand to the display panel.

3.2 Connecting the Monitor

The monitor supports DisplayPort (DP 1.4) and HDMI (HDMI 2.0) inputs. Connect the appropriate cable from your computer or gaming console to the corresponding port on the monitor.

- **DisplayPort (DP 1.4):** Supports up to 200Hz refresh rate.
- **HDMI (HDMI 2.0):** Supports up to 200Hz refresh rate.
- **Earphone Jack:** Connect headphones or external speakers.
- **DC2.0:** Power input.

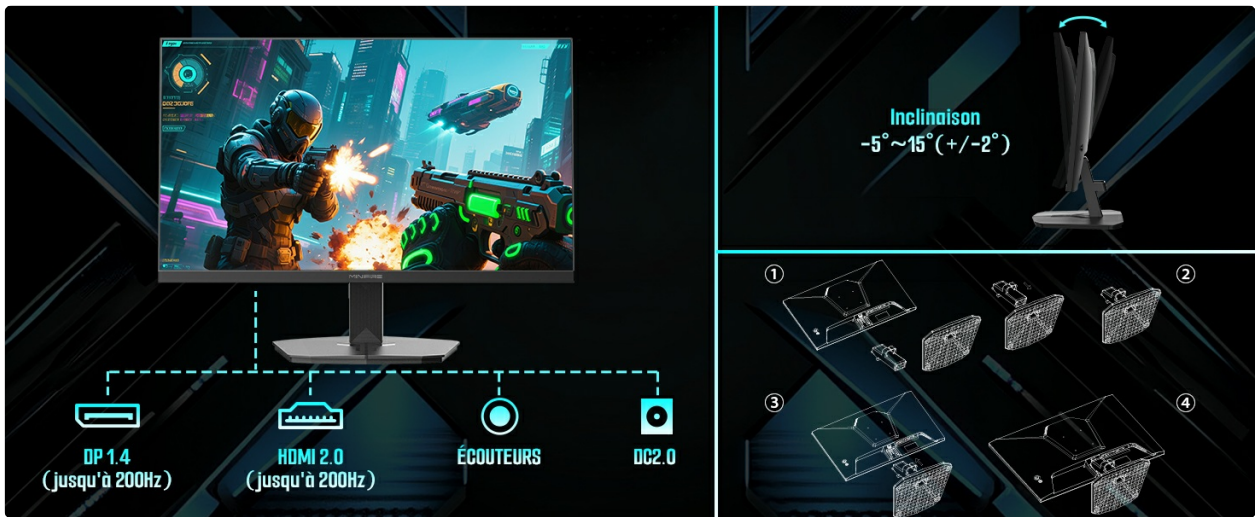


Image: Illustration of the monitor's rear ports (DP 1.4, HDMI 2.0, Earphone Jack, DC2.0) and its tilt adjustment range.

After connecting the video cable, connect the power adapter to the monitor's DC2.0 port and then plug the power cable into a wall outlet.

3.3 VESA Mounting

The monitor is VESA compatible (75 x 75 mm) for wall mounting or use with an articulated arm (mount sold separately).

4. OPERATING INSTRUCTIONS

4.1 Power On/Off

Press the power button (usually located on the back or bottom of the monitor) to turn the monitor on or off.

4.2 Menu Navigation

The monitor features a joystick control (typically on the back) for navigating the On-Screen Display (OSD) menu. Push the joystick in to confirm selections and move it up/down/left/right to navigate through options.

4.3 Display Settings

Access the OSD menu to adjust various display settings:

- **Brightness:** Adjust the screen's luminance (up to 300 Nits).
- **Contrast:** Modify the difference between light and dark areas (4000:1 contrast ratio).
- **Color Settings:** Adjust color temperature, hue, and saturation. The monitor offers 110% sRGB color gamut and 16.7 million (8-bit) display colors.
- **Refresh Rate:** Set the display refresh rate (up to 200Hz).
- **Response Time:** Configure the response time (1ms MPRT). Note: Some users report stuttering with "Fast" or "Extreme" settings; consider leaving this at default if issues occur.
- **FreeSync:** Enable or disable FreeSync technology to eliminate screen tearing and stuttering.



Image: Visual comparison demonstrating the effect of FreeSync technology in reducing screen tearing and stuttering.

- **HDR (High Dynamic Range):** Enable HDR10 for enhanced color vibrancy and realism.



Image: Side-by-side comparison of a scene with HDR active versus HDR deactivated, highlighting improved color and contrast.

- **Blue Light Filter:** Activate the blue light filter to reduce eye strain during prolonged use.

4.4 Gaming Features

The monitor includes several features designed to enhance your gaming experience:

- **Game Modes:** Select from various preset game modes (e.g., FPS, RTS, Race) optimized for different game genres.
- **Game Timer:** Display an on-screen timer.
- **Crosshair:** Enable an on-screen crosshair for improved aiming accuracy.
- **Black Level:** Adjust black levels to enhance visibility in dark game scenes.



Image: Visual representations of the Game Timer, Crosshair, and Black Level adjustment features available in the monitor's OSD.

4.5 Tilt Adjustment

The monitor stand allows for tilt adjustment from -5° to 15° ($\pm 2^{\circ}$) to achieve an optimal viewing angle.

5. MAINTENANCE

5.1 Cleaning the Monitor

- Always power off the monitor and unplug the power cable before cleaning.
- Use a soft, lint-free cloth to gently wipe the screen. For stubborn marks, lightly dampen the cloth with water or a non-abrasive screen cleaner.
- Avoid using alcohol, ammonia, or abrasive cleaners, as these can damage the screen surface.
- Wipe the monitor casing with a soft, dry cloth.

5.2 General Care

- Avoid placing heavy objects on the monitor or its cables.
- Do not expose the monitor to direct sunlight, high humidity, or extreme temperatures.
- Ensure adequate ventilation around the monitor to prevent overheating.

6. TROUBLESHOOTING

If you encounter issues with your monitor, refer to the following common problems and solutions:

Problem	Possible Cause / Solution
---------	---------------------------

Problem	Possible Cause / Solution
No image on screen	<ul style="list-style-type: none"> • Ensure the power cable is securely connected to the monitor and a power outlet. • Verify the video cable (HDMI/DP) is properly connected to both the monitor and the source device. • Check if the monitor is powered on. • Select the correct input source in the OSD menu.
Image flickering or stuttering	<ul style="list-style-type: none"> • Ensure FreeSync is enabled in the OSD menu and on your graphics card settings. • Check the video cable for damage or loose connections. • Try a different video cable. • Adjust the "Response Time" setting in the OSD menu; some users report issues with "Fast" or "Extreme" settings. • Update your graphics card drivers.
Incorrect resolution or refresh rate	<ul style="list-style-type: none"> • Adjust the display settings in your operating system. • Ensure your graphics card supports the desired resolution and refresh rate. • Use a high-quality HDMI 2.0 or DisplayPort 1.4 cable.
Dead pixels or display anomalies	<ul style="list-style-type: none"> • While rare, a small number of dead pixels may be considered normal for LCD panels. If the issue is significant, contact customer support.
Buttons/Joystick unresponsive	<ul style="list-style-type: none"> • Ensure the monitor is powered on. • Try pressing the joystick firmly. • Unplug the monitor from power for a few minutes, then reconnect.

7. SPECIFICATIONS

Feature	Detail
Brand	Minifire
Model Number	MFG24F4H
Screen Size	24 Inches
Display Type	VA
Resolution	1920 x 1080 (Full HD)
Aspect Ratio	16:9
Refresh Rate	200 Hz
Response Time	1 ms (MPRT)

Feature	Detail
Contrast Ratio	4000:1
Brightness	300 Nits
Color Gamut	110% sRGB
Display Colors	16.7 Million (8-bit)
Connectivity	1 x HDMI 2.0, 1 x DisplayPort 1.4, Earphone Jack
VESA Compatibility	75 x 75 mm
Tilt Adjustment	-5° to 15° ($\pm 2^\circ$)
Special Features	FreeSync, HDR10, Blue Light Filter, Game Modes (Game Timer, Crosshair, Black Level)
Dimensions (L x W x H)	53.9 x 20.2 x 41.3 cm

8. WARRANTY AND SUPPORT

8.1 Warranty Information

This Minifire monitor comes with a **2-year manufacturer's warranty**. Please retain your proof of purchase for warranty claims.

8.2 Customer Support

For any questions, technical assistance, or warranty service, please contact Minifire professional after-sales support. Refer to the contact information provided with your product packaging or visit the official Minifire website for support details.