

## ATOTO AC-44P4

# ATOTO AC-44P4 HD 720P Front DVR Camera User Manual

Model: AC-44P4

## 1. INTRODUCTION

Thank you for choosing the ATOTO AC-44P4 HD 720P Front DVR Camera. This device is designed to provide reliable video recording of your driving experience with a wide 140-degree viewing angle and support for up to 32GB of storage. This manual provides detailed instructions for installation, operation, and maintenance to ensure optimal performance and longevity of your device.

## 2. PACKAGE CONTENTS

Please verify that all items listed below are included in your package:

- ATOTO AC-44P4 Dash Cam
- AC-44P4 Extension Cable (3m/9.8ft)
- 32GB Micro SD Card



Image: Contents of the ATOTO AC-44P4 package, including the camera, cable, and memory card.

## パッケージ情報



AC-44P4タッチボード  
DVR録画カメラ



AC-44P4用延長ケーブル  
(3m/9.8ft)



32GBマイクロ  
SDカード

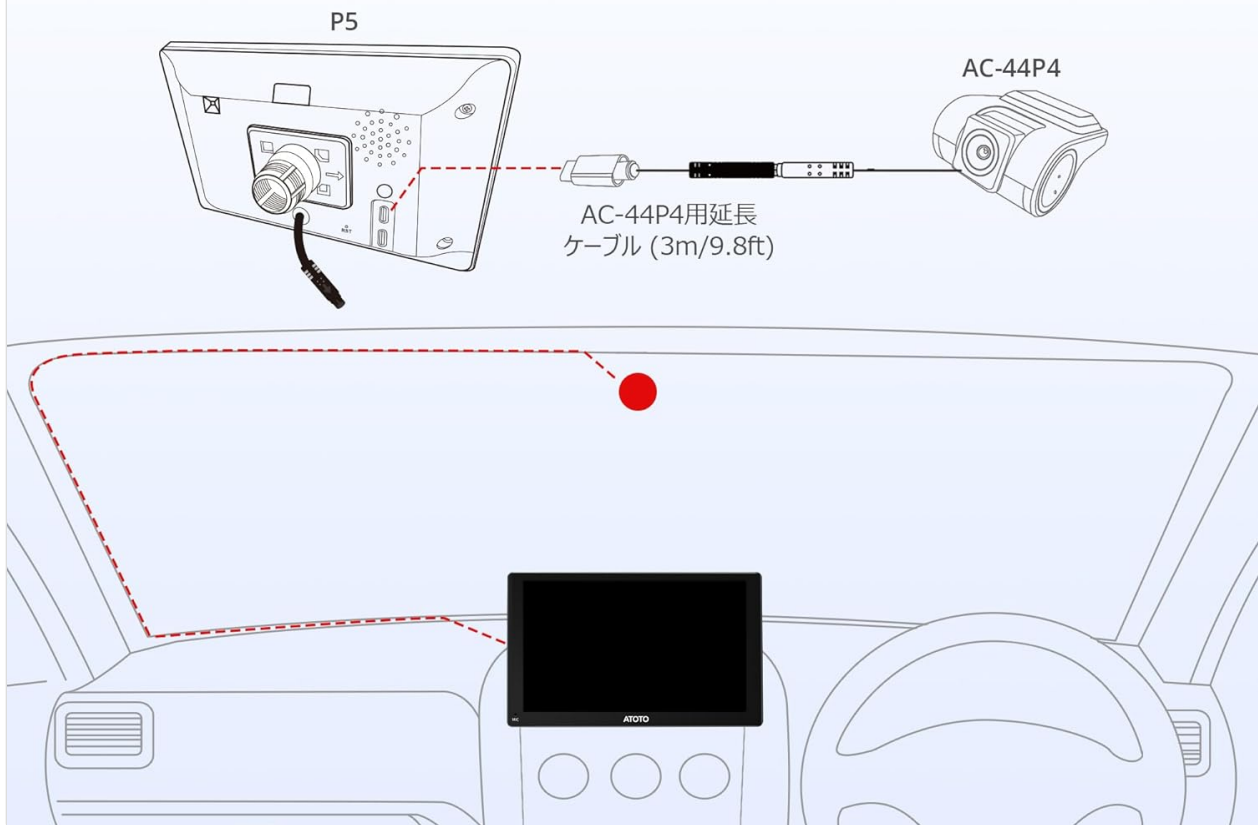


Image: Detailed view of package contents and a diagram illustrating the connection to a P5 head unit and windshield placement.

### 3. KEY FEATURES

- **HD 720P Video Recording:** Captures clear video footage at 720P resolution.
- **140° Wide Viewing Angle:** Provides a broad perspective of the road ahead, minimizing blind spots.
- **Automatic Start & Loop Recording:** The camera automatically begins recording when the vehicle starts and continuously records, overwriting the oldest files when the storage is full.
- **Video Lock Function:** Important footage can be manually locked to prevent it from being overwritten during loop recording.
- **Built-in Microphone:** Records audio inside the vehicle, which can be toggled on or off as needed.
- **Dedicated "DVR-CAM" App Control:** Easily manage and view recorded videos directly from your compatible ATOTO head unit using the dedicated application.
- **Storage Support:** Supports Micro SD cards up to 32GB (a 32GB card is included).

## HD 720P & 140°の広い視野範囲



Image: Illustrates the 720P HD resolution and the 140-degree wide viewing angle of the camera.

## 写真撮影

高品質なスナップショットであらゆる瞬間を捉えましょう。



## ビデオロック

紛争時には、P5の大画面  
で即時再生可能

## 自動起動とループ録画

ループ機能によるエンドレス録画で、  
大事な瞬間を逃しません



※32GBまでのMicro SDカードに対応しています（同梱）

Image: Demonstrates the photo shooting, video lock, and automatic loop recording features.



## 内蔵マイク

ドライブ中のすべての音声を真実そのままに記録

必要に応じて簡単にオフに切り替え可能



## 専用「DVR-CAM」アプリ制御

記録されたビデオをP5画面で簡単に閲覧できます



Image: Highlights the built-in microphone and the dedicated DVR-CAM app control interface.

## 4. INSTALLATION GUIDE

### 4.1 Placement and Connection

1. **Choose a Location:** Mount the AC-44P4 camera on your car's front windshield in a position that provides a clear, unobstructed view of the road. Ensure it does not block your driving vision. *Note: The AC-44P4 cannot be installed on vertical car windshields.*
2. **Connect to Head Unit:** Use the provided extension cable to connect the AC-44P4 camera to the designated DVR input port on your compatible ATOTO P5 series head unit.
3. **Insert Micro SD Card:** Insert the included 32GB Micro SD card into the camera's card slot. Ensure it is inserted correctly.

## パッケージ情報



AC-44P4タッチボード  
DVR録画カメラ



AC-44P4用延長ケーブル  
(3m/9.8ft)



32GBマイクロ  
SDカード

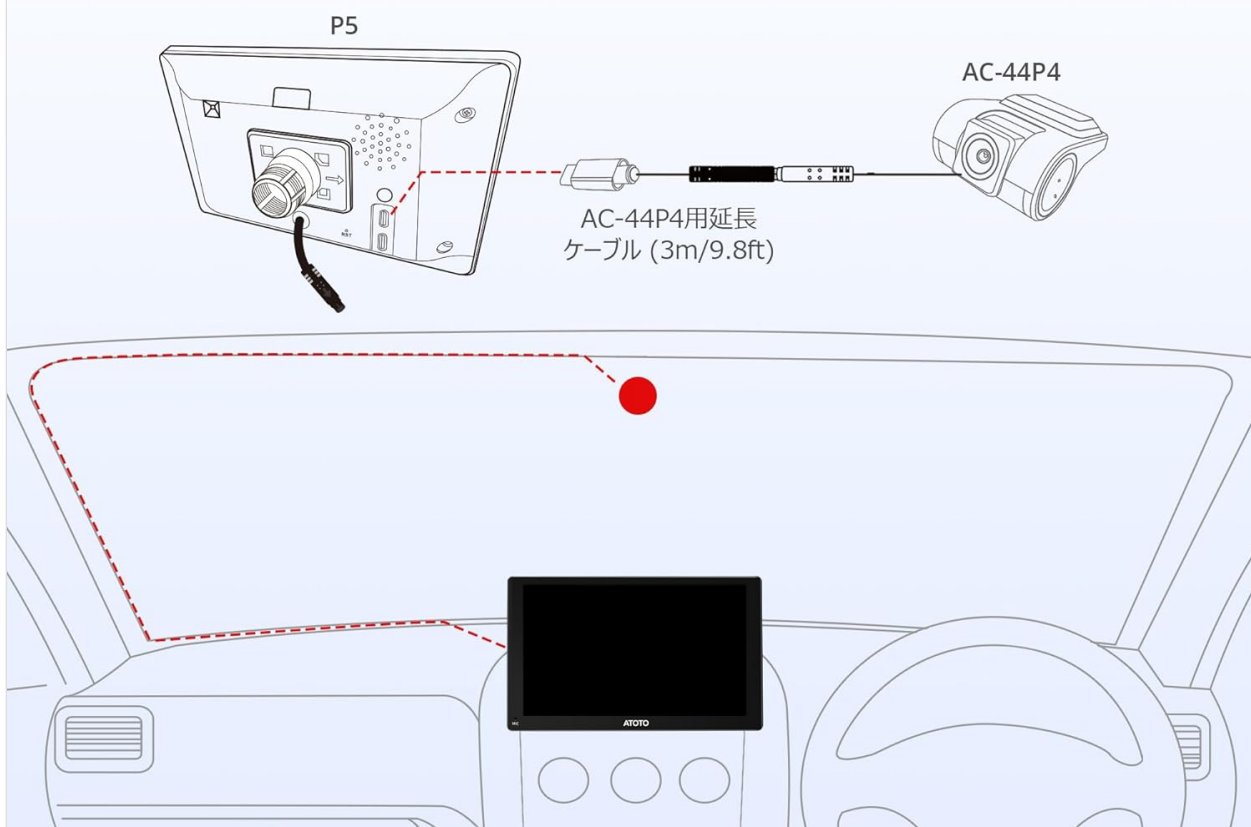


Image: Illustrates the recommended installation position on the windshield and the connection path to the ATOTO P5 head unit.

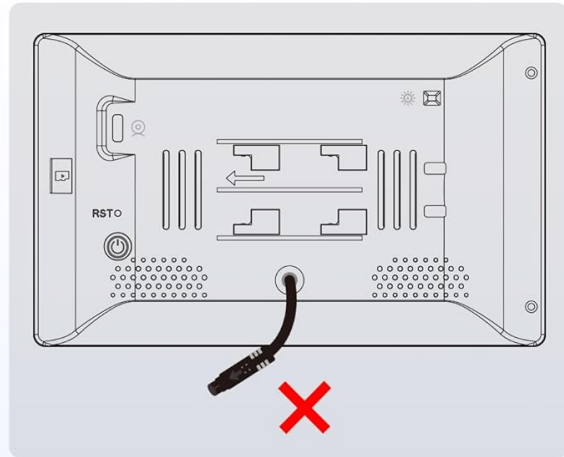
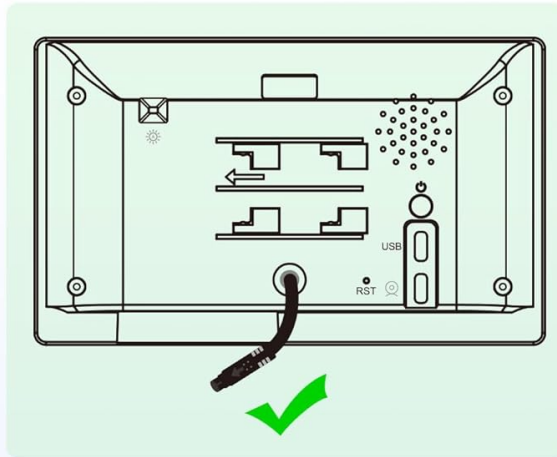
### 4.2 Compatibility Notes

The ATOTO AC-44P4 DVR Camera is specifically designed for use with **ATOTO P5 series head units only**. It is not compatible with other ATOTO series (e.g., S8, F7, A6PF, P9, P8) or head units from other brands. Please ensure your head unit is an ATOTO P5 series model for proper functionality.

The camera supports Micro SD cards up to 32GB. Using incompatible or larger capacity cards may result in recording issues. A 32GB Micro SD card is included for your convenience.

## 重要

P5シリーズにのみ対応



他のブランドや他のATOTOシリーズとは互換性がありません



S8 シリーズ



F7 シリーズ



A6PF シリーズ

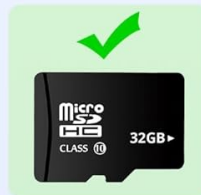


P9 シリーズ



P8 シリーズ

MicroSDカードが付属しており、上限32Gまで対応。



AC-44P4は垂直の車のフロントガラスには取り付けできません。

Image: Important compatibility information, showing correct and incorrect head unit types and supported Micro SD card types.

## 5. OPERATING INSTRUCTIONS

### 5.1 Basic Operation

1. **Power On/Off:** The camera powers on and off automatically with your vehicle's ignition when connected to a compatible ATOTO P5 head unit.
2. **Automatic Recording:** Once powered on, the camera will automatically begin recording video footage to the inserted Micro SD card.
3. **Loop Recording:** The camera records in continuous loops. When the Micro SD card is full, the oldest unlocked files will be overwritten by new recordings.

### 5.2 Using the DVR-CAM App

Access the dedicated "DVR-CAM" application on your ATOTO P5 head unit to manage and view recordings.

- **View Live Feed:** Open the app to see a real-time view from the camera.
- **Access Recordings:** Browse through recorded video files.
- **Video Lock:** During recording or playback, you can manually lock important video segments to prevent



them from being overwritten. Look for a lock icon within the app interface.

- **Microphone Control:** The built-in microphone can be easily toggled on or off through the app settings if you wish to record or mute in-car audio.

## 6. MAINTENANCE

---

- **Cleaning the Lens:** Regularly clean the camera lens with a soft, lint-free cloth to ensure clear video quality. Avoid abrasive materials or harsh chemicals.
- **SD Card Management:** Periodically format the Micro SD card (e.g., once a month) through the DVR-CAM app to maintain optimal performance and prevent data corruption. Back up any important files before formatting.
- **Temperature:** Avoid exposing the camera to extreme temperatures for extended periods, as this can affect its performance and lifespan.

## 7. TROUBLESHOOTING

---

- **Camera Not Recording:**
  - Ensure the camera is properly connected to the ATOTO P5 head unit.
  - Check if the Micro SD card is inserted correctly and is not full. Format the card if necessary (after backing up data).
  - Verify that your head unit is a compatible ATOTO P5 series model.
- **Poor Video Quality:**
  - Clean the camera lens.
  - Ensure the windshield area where the camera is mounted is clean.
- **App Not Recognizing Camera:**
  - Restart your ATOTO P5 head unit.
  - Check the cable connection between the camera and the head unit.

If you encounter persistent issues not covered here, please refer to the support section of this manual or contact ATOTO customer service.

## 8. SPECIFICATIONS

---

Feature	Specification
Brand	ATOTO
Model	AC-44P4
Video Resolution	HD 720P
Viewing Angle	140° Wide Angle
Storage Support	Up to 32GB Micro SD Card (32GB included)
Product Dimensions	15 x 11.4 x 4.8 cm

Compatibility	ATOTO P5 Series Head Units ONLY
---------------	---------------------------------

## 9. WARRANTY AND SUPPORT

The ATOTO AC-44P4 DVR Camera comes with a standard manufacturer's warranty. For specific warranty terms and conditions, please refer to the documentation provided with your ATOTO head unit or visit the official ATOTO website.

For technical support, troubleshooting assistance, or any inquiries regarding your ATOTO product, please contact ATOTO customer service through their official website or the contact information provided in your head unit's manual. Please have your product model (AC-44P4) and purchase details ready when contacting support.