

eufy E25

eufy Omni E25 Robotic Vacuum Cleaner User Manual

Comprehensive guide for setup, operation, and maintenance of your eufy Omni E25.

INTRODUCTION

This manual provides detailed instructions for the eufy Omni E25 robotic vacuum cleaner, including its bundled battery. The eufy Omni E25 is designed to offer a comprehensive and automated cleaning experience for your home.

Key features of the eufy Omni E25 include:

- **Hydrojet System:** Real-time mop cleaning to prevent grime redeposit and ensure hygienic cleaning.
- **All-in-One Hands-Free Station:** Automates self-empty, self-wash, hot-dry, and auto-refill functions for minimal user intervention.
- **20,000Pa Turbo Suction:** Powerful suction for deep cleaning, effectively removing embedded dust, pet hair, and debris from various surfaces.
- **DuoSpiral Detangle Brushes:** Designed to prevent hair tangling for consistent performance.
- **CornerRover Arm:** Extends to ensure 100% edge and corner coverage during cleaning.



Figure 1: eufy Omni E25 Robotic Vacuum Cleaner and its bundled battery.

SETUP AND INITIAL PREPARATION

1. Unboxing and Placement

Carefully remove all components from the packaging. Place the All-in-One Hands-Free Station on a hard, flat surface against a wall, ensuring there is adequate space around it for the robot to maneuver.

2. Battery Installation

The eufy Omni E25 comes with a separate battery that needs to be installed before first use. Follow these steps as illustrated below:

Multiple protections, keep away from danger



Overload
Protection



Overvoltage
Protection



Overcurrent
Protection



Overvoltage
Protection



Over discharge
Protection



Short circuit
Protection

Figure 2: Easy battery installation steps for the eufy Omni E25.

1. **Step 1:** Remove the bottom cover of the robot vacuum.
2. **Step 2:** Locate the battery compartment.
3. **Step 3:** Insert the battery into the compartment.
4. **Step 4:** Connect the battery cable to the robot's port.
5. **Step 5:** Secure the battery within the compartment.

6. **Step 6:** Carefully tuck in any excess cable.
7. **Step 7:** Ensure the battery is fully seated.
8. **Step 8:** Replace the bottom cover and secure it.

3. Charging the Robot

Once the battery is installed, place the robot onto the All-in-One Hands-Free Station. Ensure the charging contacts align. The robot will begin charging automatically. Allow for a full charge before the first use.

4. Filling Water Tanks and Detergent

Fill the clean water tank on the station with clean water. If using detergent, add the recommended amount to the designated detergent compartment. The station will automatically dispense detergent as needed.

OPERATING THE EUFY OMNI E25

1. Starting a Cleaning Cycle

You can start a cleaning cycle using the eufy app or by pressing the button on the robot. The robot will automatically map your home and begin cleaning.

2. Hydrojet System for Mopping

The integrated Hydrojet System ensures continuous clean mopping. The station automatically washes the mop pads during the cleaning cycle, preventing the redeposit of dirt and grime.

Groundbreaking HydrJet System



360× Self-Cleaning
Per Minute



Strong
Pressure



Long Roller
Mop



Dual Water
Reservoir

Figure 3: The Groundbreaking Hydrojet System in action, ensuring thorough and clean mopping.

3. Turbo Suction Power

The eufy Omni E25 features 20,000Pa Turbo Suction, capable of extracting deeply embedded dirt, pet hair, and debris from both hard floors and carpets. The robot intelligently adjusts suction power based on the surface detected.

20,000 Pa Turbo Suction



Figure 4: The eufy Omni E25 utilizing its 20,000 Pa Turbo Suction for effective debris removal.

4. DuoSpiral Detangle Brushes

The unique DuoSpiral Detangle Brushes are designed to minimize hair tangling around the brushes. They rotate to gather hair and fur, then retract to suck them up, ensuring consistent cleaning performance.

DuoSpiral Detangle Brushes

Zero tangling for a convenient cleaning experience



Figure 5: Illustration of the DuoSpiral Detangle Brushes, designed for zero tangling.

5. CornerRover Arm

For comprehensive cleaning, the eufy Omni E25 is equipped with a CornerRover Arm that extends to reach deep into corners and along edges, ensuring 100% coverage and leaving no area uncleaned.

CornerRover Arm



Figure 6: The CornerRover Arm ensuring complete edge and corner coverage.

MAINTENANCE

Regular maintenance ensures the optimal performance and longevity of your eufy Omni E25.

1. All-in-One Hands-Free Station Maintenance

The station automates several maintenance tasks:

- **Self-Empty:** The station automatically empties the robot's dustbin into a sealed bag, reducing your exposure to dust. Replace the dust bag when full.
- **Self-Wash:** The mop pads are automatically washed and rinsed during and after cleaning cycles.
- **Hot-Dry:** After mopping, the mop pads are hot-dried to prevent mildew and odors.
- **Auto-Refill:** The station automatically refills the robot's water tank from the clean water tank.

All-in-One Station for Smart Maintenance



Automatic
Detergent
Dispensing



Self-
Washing



Hot Air
Drying



Self-
Emptying



Self-
Refilling



Wastewater
Collection

Figure 7: The All-in-One Station for Smart Maintenance, illustrating its automated functions.

2. Robot Components Cleaning

- **Main Brush:** Periodically remove the main brush and clean any tangled hair or debris. Use the cleaning tool provided.
- **Side Brushes:** Check side brushes for wear and tear. Replace if damaged. Remove any tangled hair.
- **Sensors:** Wipe all sensors (cliff sensors, wall sensor) with a clean, dry cloth to ensure proper navigation.
- **Wheels:** Clean any debris from the drive wheels and caster wheel.

TROUBLESHOOTING

If you encounter issues with your eufy Omni E25, refer to the following common solutions:

- **Robot not charging:** Ensure the robot is correctly docked on the station and the station is plugged into a power outlet. Clean the charging contacts on both the robot and the station.
- **Robot stuck or navigating erratically:** Clean all sensors. Remove any obstacles from the robot's path. Check if wheels or brushes are jammed.
- **Poor cleaning performance:** Empty the dustbin/replace the dust bag. Clean or replace the main brush and side brushes. Ensure water tanks are filled and mop pads are clean.
- **App connectivity issues:** Ensure your Wi-Fi network is stable and the robot is within range. Restart the robot and your router. Re-pair the robot with the app if necessary.
- **Excessive noise:** Check for any foreign objects caught in the brushes or wheels. Ensure all components are properly installed.

For more complex issues, consult the eufy app's help section or contact eufy customer support.

SPECIFICATIONS

Below are the key specifications for the eufy Omni E25 and its bundled battery:

Feature	Specification
Model	eufy Omni E25
Suction Power	20,000 Pa (Turbo Suction)
Mopping System	Hydrojet System (Self-washing, Hot-drying)
Navigation	AI.See™ (Implied from image)
Battery Type	Lithium-ion
Battery Voltage	14.6V
Battery Capacity	5200mAh
Battery Dimensions (Approx.)	175mm (L) x 55mm (W) x 57mm (H)
First Available Date	June 4, 2025

Easy to install

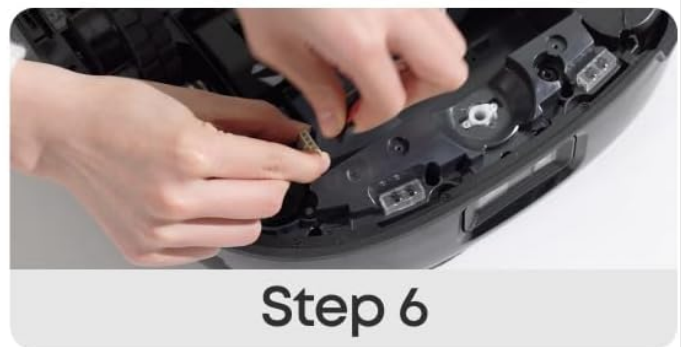


Figure 8: Detailed specifications of the eufy Omni E25 battery.

Battery Safety Features

The battery is equipped with multiple protection mechanisms to ensure safe operation and long life:

- Overload Protection
- Overvoltage Protection
- Overcurrent Protection
- Overdischarge Protection

- Short Circuit Protection

Easy to install

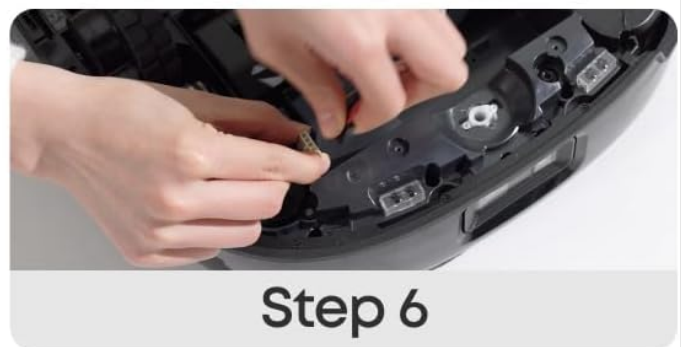


Figure 9: Battery protection features for enhanced safety.

WARRANTY AND SUPPORT

eufy products typically come with a limited warranty. Please refer to the warranty card included with your product or visit the official eufy website for detailed warranty terms and conditions specific to the eufy Omni E25.

For technical support, troubleshooting assistance, or any inquiries regarding your eufy Omni E25, please contact eufy customer support through their official website or the eufy app. Have your product model and serial number ready when

contacting support.

You can visit the official eufy store on Amazon for more information:[eufy Store](#)

© 2025 eufy. All rights reserved.