

## Douk Audio AK\_DB16L\_MIC

# Douk Audio Music Level Meter AK\_DB16L\_MIC Instruction Manual

Model: AK\_DB16L\_MIC

## 1. INTRODUCTION AND OVERVIEW

The Douk Audio AK\_DB16L\_MIC is a professional 16-bit LED music level meter designed to visualize audio signals dynamically. It features a highly sensitive microphone for audio acquisition and advanced noise filtering to ensure accurate display in various environments. This device is suitable for car audio systems, DJ stages, and home decoration, offering adjustable sensitivity and brightness to suit different user preferences and ambient conditions.

The unit incorporates advanced 16-bit processing and vivid blue LEDs to transform audio signals into dynamic light patterns, responding in real-time to bass and treble frequencies with an accuracy of  $\pm 3\text{dB}$ .

# Visualizing Dynamic Music

With 16 vivid blue LED lamp beads, highly sensitive microphone pickup and noise filtering function, AK\_DB16L\_MIC provides different display modes and all items are adjustable, incomparably and perfectly make music alive.

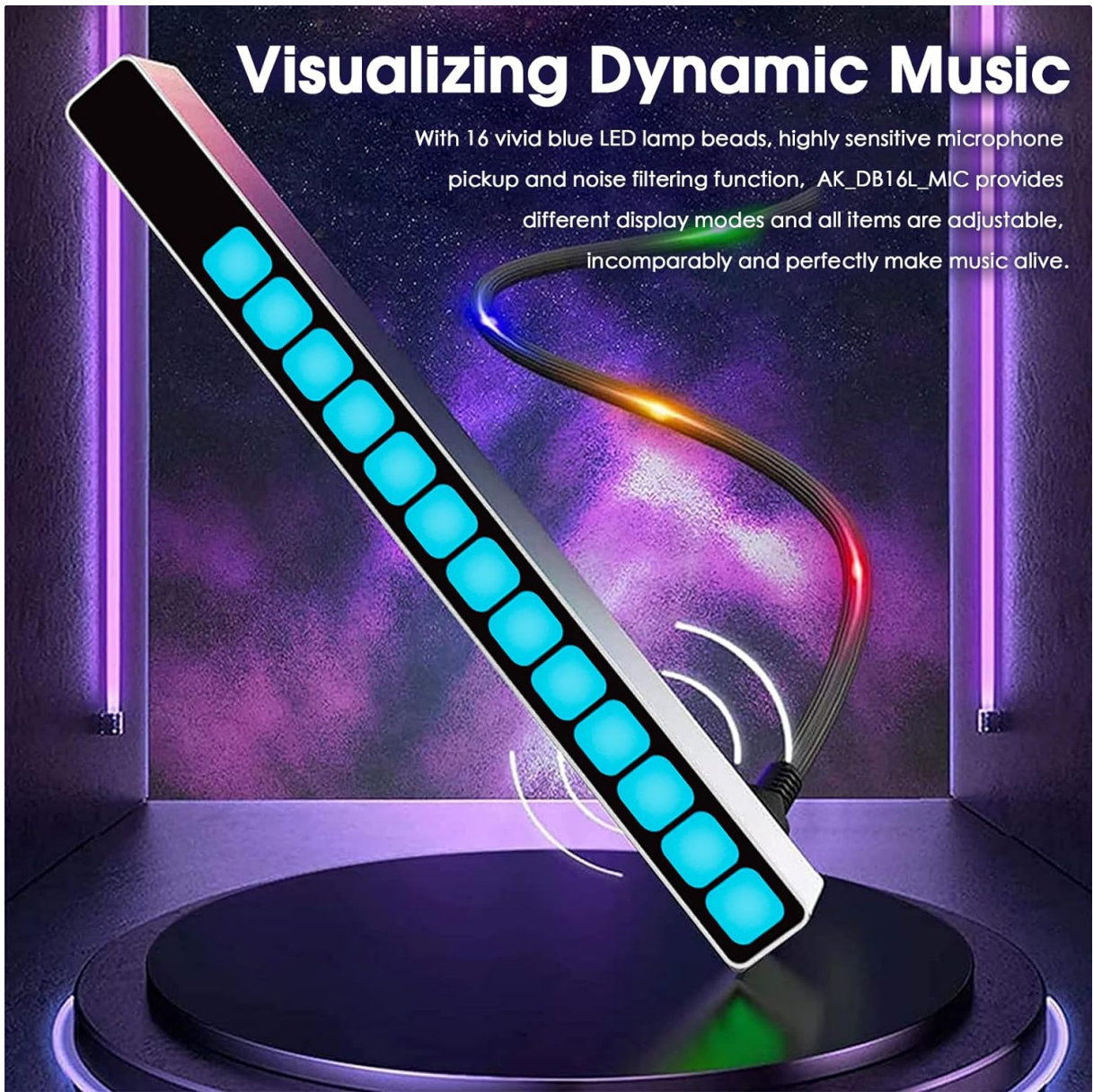


Image: The Douk Audio Music Level Meter actively displaying sound levels through its blue LED array. The Automatic Gain Control (AGC) algorithm ensures optimal display effects even with fluctuating input signals. Display mode, peak hold, brightness, speed, and sensitivity can all be adjusted to meet specific user requirements.



# Advanced and Powerful Function

The AGC algorithm ensures the best display effects when the input signal changes.  
Display mode, peak, brightness, speed, sensitivity can all be adjusted freely to satisfy different needs.

Image: Multiple Douk Audio Music Level Meters demonstrating various advanced display patterns.

## 2. SETUP

The Music Level Meter is designed for plug-and-play installation across multiple environments. It is powered universally via a Micro-USB connection.

### Power Requirements

- **Working Voltage:** DC 5V
- **Minimum Current:**  $\geq 0.3A$
- **Power Interface:** Micro-USB

Ensure the power supply provides at least 0.3A. Exceeding 5V input will result in damage to the device. If using multiple units, each requires its own 0.3A current supply.

### Initial Setup

1. **Remove Protective Film:** The entire display screen is covered by a protective film. Please remove it before using the device.
2. **Connect Power:** Connect the provided Micro-USB cable to the device and a compatible 5V DC power source.

3. **Placement:** Place the device on a stable surface such as a desk, car dashboard, or DJ mixer rack.

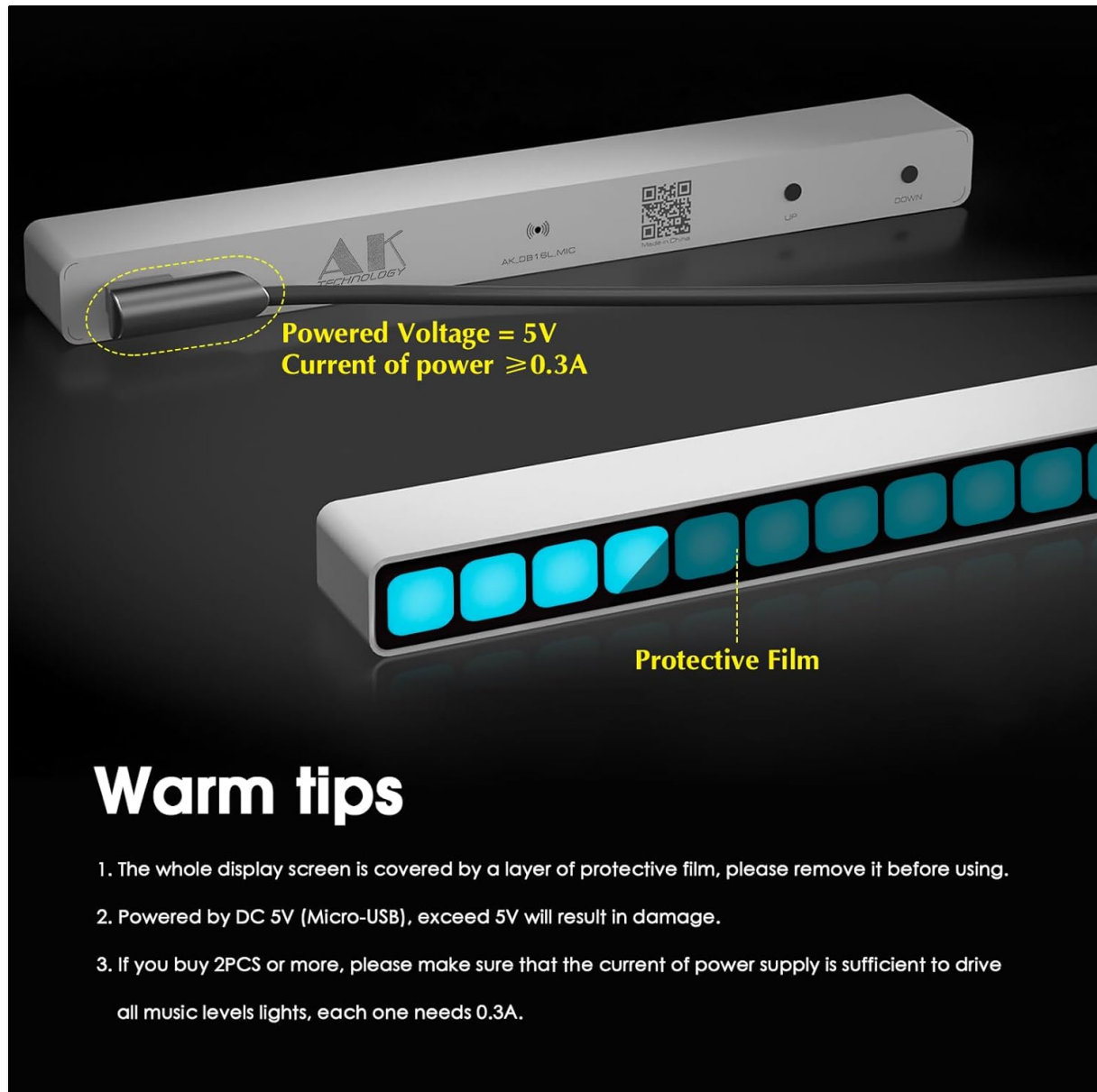


Image: A detailed view of the Music Level Meter's Micro-USB port and a reminder to remove the protective film.

### 3. OPERATING INSTRUCTIONS

The Music Level Meter features control keys for adjusting various display parameters. The highly sensitive microphone captures audio up to 20kHz, with proprietary ambient noise filtering to ensure accurate visualization, especially in environments like cars.

#### Control Keys

The device is equipped with 'UP' and 'DOWN' control keys, typically located on the side or back, allowing for adjustments to the display settings.

- **UP Key:** Used to increase values or cycle through options (e.g., increase brightness, change display mode).
- **DOWN Key:** Used to decrease values or cycle through options (e.g., decrease brightness, change display mode).

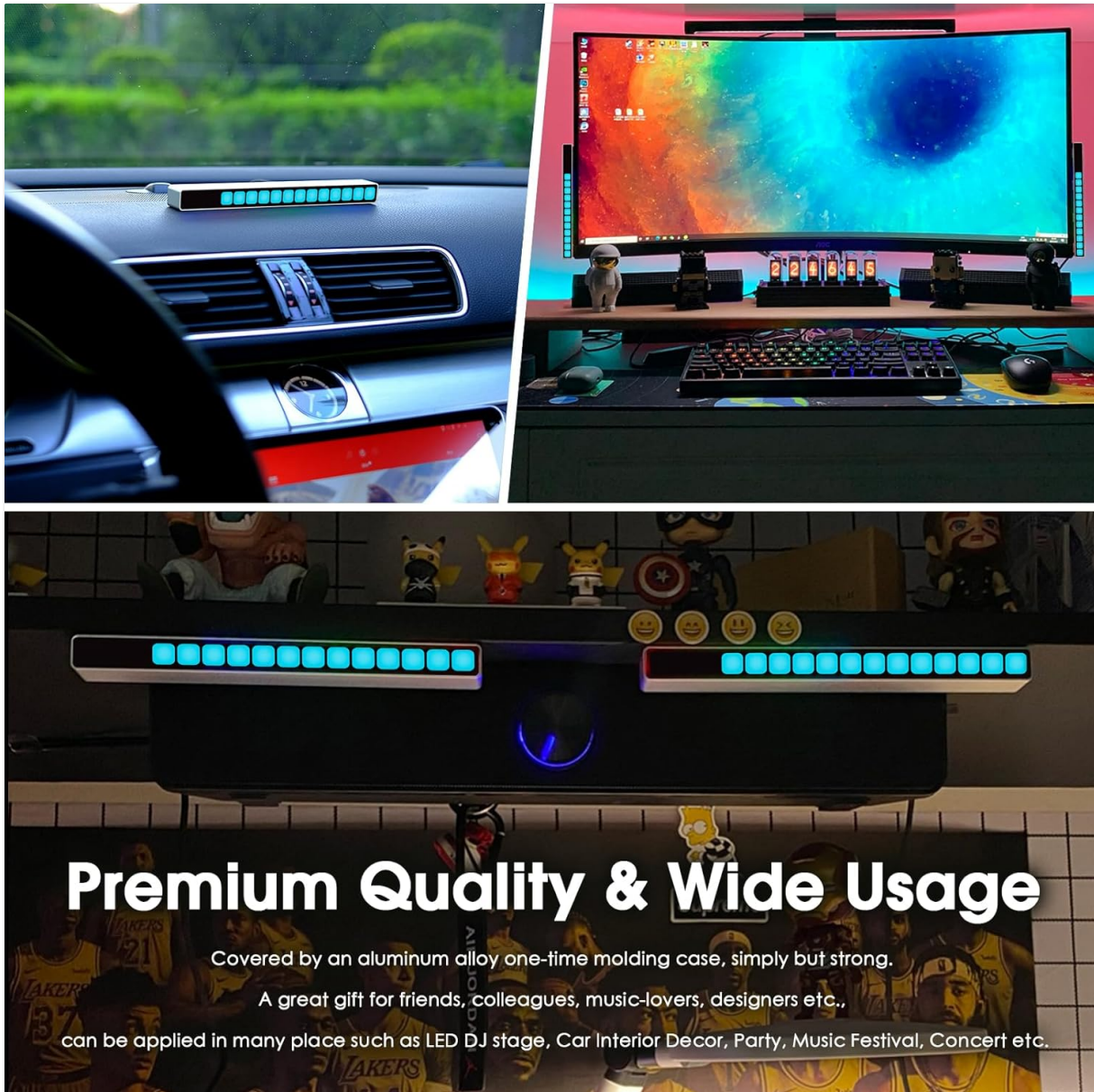
#### Adjustable Parameters

- **Display Mode:** Select from various visualization patterns.



- **Sensitivity:** Adjust the microphone's responsiveness to audio input (5-stage adjustment). Optimize for quiet bedrooms or loud DJ stages.
- **Speed:** Control the animation speed of the LED display.
- **Brightness:** Adjust the LED intensity (10-level control,  $\pm 0.1\text{lux}$ ).

The device can be placed in various settings to enhance the atmosphere, from office desks to car interiors.



## Premium Quality & Wide Usage

Covered by an aluminum alloy one-time molding case, simply but strong.

A great gift for friends, colleagues, music-lovers, designers etc.,

can be applied in many place such as LED DJ stage, Car Interior Decor, Party, Music Festival, Concert etc.

Image: Examples of the Music Level Meter in use on a car dashboard, a desktop, and a shelf.

# Relaxing Work & Spark Inspiration

Place it on your office desk, bedside table or in your car to create a relaxing and inspiring atmosphere.

By activating the environment, it helps to relieve your pressure and trigger your idea.

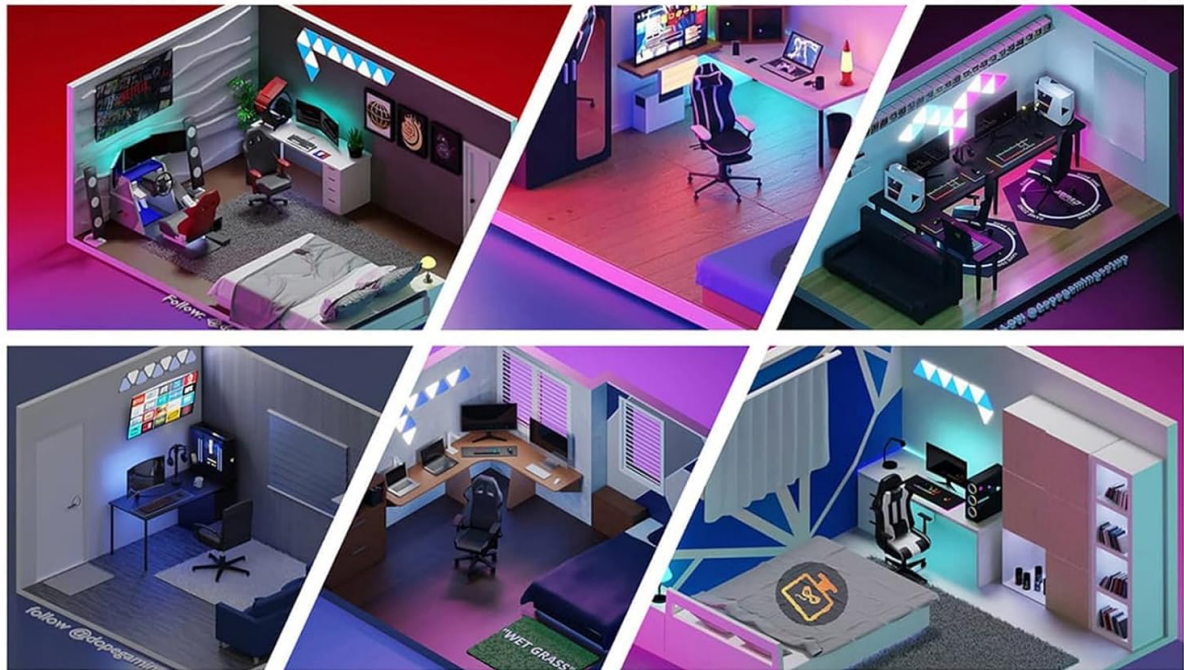


Image: The Music Level Meter positioned on an office desk, enhancing the workspace ambiance.

## 4. MAINTENANCE

To ensure the longevity and optimal performance of your Douk Audio Music Level Meter, follow these simple maintenance guidelines:

- **Cleaning:** Use a soft, dry cloth to clean the aluminum casing. Avoid abrasive cleaners or solvents that could damage the anodized finish.
- **Protective Film:** As mentioned in the setup, ensure the protective film is removed from the display screen for clear visibility.
- **Environmental Conditions:** While the aerospace-grade aluminum alloy housing is durable and withstands vibrations, avoid exposing the device to extreme temperatures, direct moisture, or harsh chemicals.
- **Power Supply:** Always use a stable 5V DC power supply with sufficient current ( $\geq 0.3A$ ) to prevent damage.

## 5. TROUBLESHOOTING

If you encounter issues with your Music Level Meter, consider the following:

No Display / Power Issues

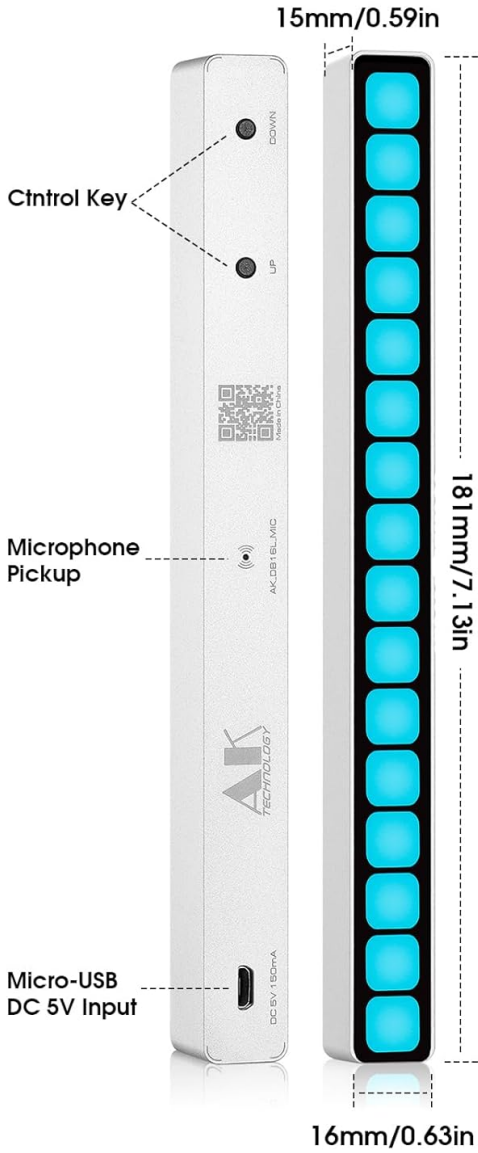
- **Check Power Connection:** Ensure the Micro-USB cable is securely connected to both the device and the power source.
- **Verify Power Supply:** Confirm that the power adapter provides exactly 5V DC and at least 0.3A. Using a power supply with higher voltage (e.g., exceeding 5V) will damage the unit. Insufficient current (less than 0.3A) may cause erratic behavior or no power.
- **Test Cable/Adapter:** Try a different Micro-USB cable or power adapter to rule out faulty accessories.

Inaccurate or Weak Visualization

- **Adjust Sensitivity:** Use the control keys to adjust the sensitivity setting. Increase sensitivity in quiet environments and decrease it in loud ones.
- **Check Microphone Placement:** Ensure the microphone pickup is not obstructed and is positioned to clearly receive audio signals.
- **Ambient Noise Filtering:** The device has built-in ambient noise filtering. If visualization is still affected by background noise, try repositioning the unit or adjusting sensitivity further.

6. SPECIFICATIONS

Detailed technical specifications for the Douk Audio AK\_DB16L\_MIC Music Level Meter:



15mm/0.59in

Control Key

Microphone Pickup

Micro-USB DC 5V Input

181mm/7.13in

16mm/0.63in

# Specifications

Model: AK\_DB16L\_MIC

Signal acquisition: microphone pickup

Adjustable items: display mode / sensitivity / speed / brightness /etc.

Working voltage: DC 5V ( ≥0.3A )

Power interface: Micro-USB

Material: One-piece molding and anodizing

Software supported: ambient noise filtering



Image: A visual representation of the device with key features and dimensions, accompanied by its specifications.

Parameter	Value
Model	AK_DB16L_MIC
Signal Acquisition	Microphone pickup
Adjustable Items	Display mode, Sensitivity, Speed, Brightness, etc.
Working Voltage	DC 5V (≥0.3A)
Power Interface	Micro-USB
Material	One-piece molding and anodizing aluminum
Software Supported	Ambient noise filtering
Dimensions (W*D*H)	181*15*16mm / 7.13*0.59*0.63in
Net Weight	86g / 0.19lb
Number of Channels	2
Specification Met	CE
Supply Current	0.3 Amps

## 7. PACKING LIST

The following items are included in the product package:

- 1 × 16-Bit Music Levels Light
- 1 × Micro-USB Cable



# PACKING LIST



1 × Music levels light

Net weight

86g/0.19lb



1 × Micro-USB Cable

Image: The Music Level Meter and its accompanying Micro-USB cable as packaged.

## 8. WARRANTY AND SUPPORT

For any questions, technical assistance, or support regarding your Douk Audio Music Level Meter, please contact the seller or refer to the official Douk Audio website. While specific warranty details are not provided in this manual, standard consumer protection laws apply. Please retain your proof of purchase for any warranty claims.

You can find more information and support at the official website: [www.musiclevelslamp.com](http://www.musiclevelslamp.com)