

- › [Mapei](#) /
- › [MAPEI Ultracare Concentrated Tile & Grout Cleaner Instruction Manual](#)

MAPEI Ultracare Concentrated Tile & Grout Cleaner

MAPEI Ultracare Concentrated Tile & Grout Cleaner Instruction Manual

Model: Ultracare Concentrated Tile & Grout Cleaner (32 fl oz)

1. INTRODUCTION

The MAPEI UltraCare Concentrated Tile & Grout Cleaner is a highly concentrated, neutral cleaner designed for routine maintenance of various ceramic, porcelain, and natural-stone surfaces, as well as grout. This biodegradable, lemon-scented formula helps to maintain surfaces in pristine condition and assists in preventing soap scum buildup and hard-water deposits when used as directed.



Image 1.1: The MAPEI Ultracare Concentrated Tile & Grout Cleaner in its 32 fl oz bottle.

2. SAFETY INFORMATION

CAUTION: IRRITANT. MAY IRRITATE EYES AND SKIN. MAY BE HARMFUL IF IT IS SWALLOWED. Read back panel before using.

- Keep out of reach of children and pets.
- Avoid contact with eyes and prolonged contact with skin.
- In case of eye contact, flush thoroughly with water for several minutes. Remove contact lenses if present and easy to do. Continue rinsing. If irritation persists, seek medical attention.
- In case of skin contact, wash with plenty of soap and water.
- If swallowed, do not induce vomiting. Drink a glass of water and contact a poison control center or doctor immediately.
- Use in a well-ventilated area.

For detailed safety data, refer to the product's Safety Data Sheet (SDS) available on the [MAPEI website](#).

3. PRODUCT FEATURES

- **Concentrated Formula:** Designed for effective cleaning without affecting surface integrity or penetrating sealers.
- **Prevents Buildup:** Helps to prevent soap scum and hard-water deposits.
- **Versatile Use:** Suitable for natural stone (sealed or unsealed), grout, ceramic, porcelain, terra cotta, Saltillo, quarry tiles, terrazzo, concrete, pavers, masonry, and other water-safe surfaces.
- **Sealer Safe:** This neutral cleaner will not strip existing sealers from surfaces.
- **Neutral pH:** Ideal for sensitive materials like natural stone, grout, and tile.
- **Lemon Scent:** Provides a pleasant aroma during and after cleaning.
- **Biodegradable:** Environmentally conscious formulation.

4. SETUP AND PREPARATION

1. **Clear Area:** Remove any furniture, rugs, or other items from the area to be cleaned.
2. **Sweep/Vacuum:** Thoroughly sweep or vacuum the surface to remove loose dirt and debris.
3. **Test Area:** Always test the cleaner in an inconspicuous area first to ensure compatibility and desired results, especially on delicate or unusual surfaces.
4. **Gather Supplies:** You will need a bucket, mop, sponge, or scrub brush, and clean water.
5. **Ventilation:** Ensure adequate ventilation in the cleaning area.

5. OPERATING INSTRUCTIONS

5.1. Dilution Ratios

- **Light Cleaning/Maintenance:** Mix 1 part cleaner with 10 parts water (e.g., 3.2 fl oz cleaner per 32 fl oz water).
- **Medium Cleaning:** Mix 1 part cleaner with 5 parts water (e.g., 6.4 fl oz cleaner per 32 fl oz water).
- **Heavy-Duty Cleaning:** Mix 1 part cleaner with 2 parts water (e.g., 10.6 fl oz cleaner per 32 fl oz water).
- **Spot Cleaning:** Can be used undiluted for stubborn spots, but always test first.

5.2. Application Steps

1. **Prepare Solution:** Pour the appropriate amount of MAPEI Ultracare Concentrated Tile & Grout Cleaner into a clean bucket and add the specified amount of clean water according to the desired cleaning strength.
2. **Apply Cleaner:** Apply the diluted solution generously to the surface using a mop, sponge, or spray bottle. Ensure the entire area to be cleaned is thoroughly wetted.
3. **Dwell Time:** Allow the cleaner to dwell on the surface for 5 to 10 minutes. For heavily soiled areas, a longer dwell time (up to 15 minutes) may be beneficial, but do not allow the solution to dry on the surface.
4. **Agitate:** For best results, agitate the surface with a scrub brush, sponge, or mop during the dwell time, paying extra attention to grout lines and heavily soiled areas.

5. **Rinse:** Thoroughly rinse the cleaned surface with clean water. Use a clean mop or sponge to remove all cleaner residue. Change rinse water frequently to avoid redepositing dirt.
6. **Dry:** Allow the surface to air dry or wipe dry with a clean, lint-free cloth for a streak-free finish.



Image 5.1: Visual comparison of tile and grout before and after cleaning with the product.



Image 5.2: A person wearing pink gloves cleaning tile grout with a blue sponge and the cleaner.



Image 5.3: A visual comparison showing brick stairs before and after cleaning, demonstrating the product's effectiveness on masonry.

6. MAINTENANCE

Regular use of MAPEI Ultracare Concentrated Tile & Grout Cleaner at the recommended dilution for light cleaning helps maintain the cleanliness and appearance of your surfaces.

- For daily or weekly cleaning, use the light cleaning dilution ratio.
- Promptly clean up spills to prevent staining.
- Ensure surfaces are completely dry after cleaning to prevent water spots or mildew.

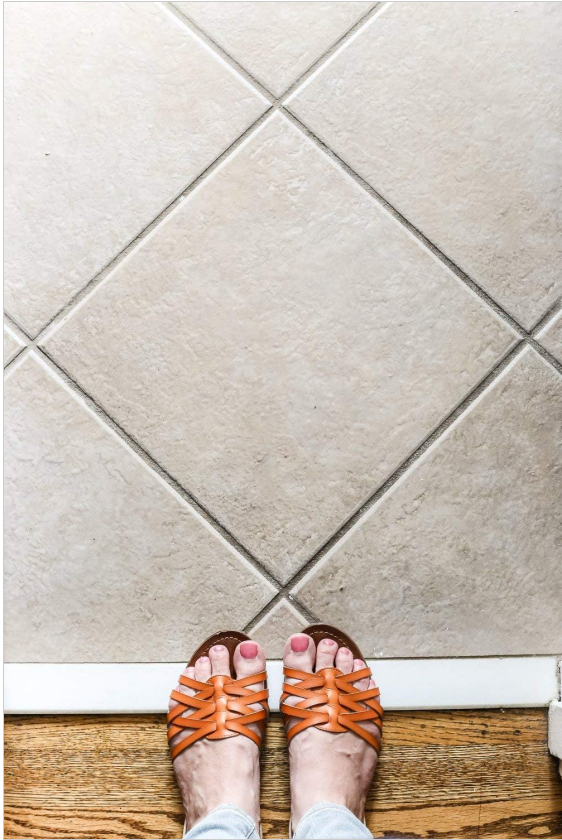


Image 6.1: A clean tile floor, illustrating the maintained appearance after using the cleaner.

7. TROUBLESHOOTING

Problem	Possible Cause	Solution
Cleaner not effective on heavy grime.	Insufficient concentration or dwell time.	Increase dilution strength (e.g., use medium or heavy-duty ratio). Extend dwell time up to 15 minutes. Agitate more vigorously with a stiff brush.
Streaks or residue left on surface.	Incomplete rinsing or dirty rinse water.	Rinse thoroughly with clean water. Change rinse water frequently. Wipe dry with a clean, lint-free cloth.
Product appears to have no effect.	Incorrect application or type of stain.	Ensure proper dilution and application. This product is for general cleaning and preventing buildup; for specific types of stains (e.g., rust, epoxy haze), specialized cleaners may be required.

8. SPECIFICATIONS

- **Product Name:** MAPEI Ultracare Concentrated Tile & Grout Cleaner
- **Brand:** Mapei

- **Item Form:** Liquid
- **Scent:** Lemon
- **Specific Uses:** All Purpose Tile & Grout Cleaning
- **Material Feature:** Eco-Friendly
- **pH:** Neutral
- **Volume:** 32 Fl Oz (Pack of 1)
- **Manufacturer:** MAPEI
- **ASIN:** B01EITNF8M

9. INGREDIENTS

The primary active ingredient is a pH-neutral cleaning agent. For a complete list of ingredients, please refer to the product packaging or the official MAPEI website.

10. WARRANTY AND SUPPORT

For information regarding product warranty, please refer to the official MAPEI product documentation or contact MAPEI customer support directly.

Customer Support:

- Visit the official [MAPEI website](#) for product information, FAQs, and contact details.
- Refer to the contact information provided on the product packaging.

