



[Manuals.plus](#) /

› [AODELAN](#) /

› AODELAN Wireless Remote Control for Nikon Cameras User Manual

## AODELAN ML-L7 Replacement Wireless Remote Control

# AODELAN Wireless Remote Control for Nikon Cameras User Manual

Model: ML-L7 Replacement Wireless Remote Control

## 1. PRODUCT OVERVIEW

---

The AODELAN Wireless Remote Control is a rechargeable, multi-functional device designed for select Nikon cameras. It enables remote operation for various camera functions, enhancing shooting stability and convenience.



Image: The AODELAN Wireless Remote Control, shown connected to a USB-C charging cable, highlighting its rechargeable nature and OLED screen.



# for Nikon

## Wireless Shutter Release with Display Screen

Image: The AODELAN Wireless Shutter Release for Nikon, featuring its display screen and compact design.

## 2. PACKAGE CONTENTS

The package typically includes the following items:

- AODELAN Wireless Remote Control
- USB Type-C Charging Cable (60cm)
- Wrist Strap
- Instruction Manual

## ▲ SPECIFICATIONS

**Power:** Built-in lithium-ion polymer battery (nominal 3.7V/0.67Wh(180mAh))

**Continuous operating time:** Approx. 10 hours\* (to continuously control the camera shooting with the fully charged built-in battery)

**Charging time:** Approx 1 hour and 30 minutes\* (charging voltage: 5V, charging current: 0.12A, from low battery level warning to fully charged)

**Connector:** USB Type-C (input, 5V) **Screen:** OLED screen, 128x72 dots

## ▲ PACKING



Image: Visual representation of the remote control, USB-C cable, and wrist strap included in the package.

### 3. KEY FEATURES

- **Multi-functional Control:** Supports photo taking, video recording, BULB mode, and zoom functions.
- **Extended Range:** Operates up to 30 meters (97 feet) away from the camera.
- **Anti-shake Function:** Improves shooting stability by eliminating direct camera contact.
- **USB-C Rechargeable:** Built-in battery provides up to 10 hours of continuous operation after approximately 1.5 hours of charging.
- **Firmware Upgrade Support:** USB-C port allows for future firmware updates to maintain compatibility.
- **OLED Screen:** Displays operational status, settings, battery level, and Bluetooth pairing information.
- **Omnidirectional Operation:** Provides 360° wireless control within 10 meters (32.8 feet) without requiring line of sight.

## Camera Remote Control for Nikon



32.8 ft



Zoom in+



Zoom out-



Taking pictures



Recording movies



Screen display

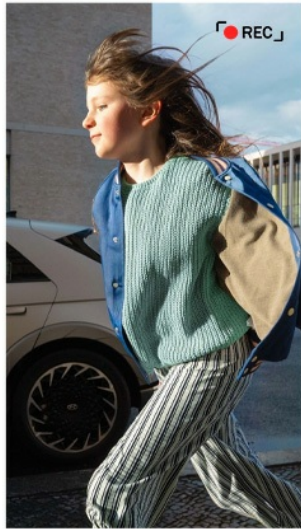


Rechargeable

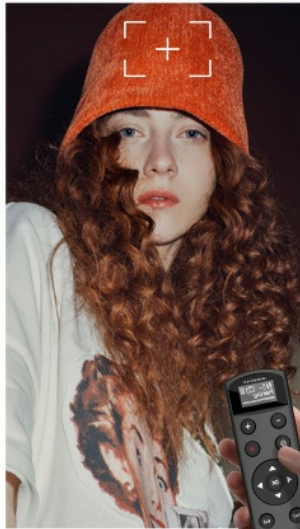


Image: The remote control highlighting its key functions: zoom in/out, taking pictures, recording movies, screen display, and rechargeable battery.

# Multi-Function Camera Remote Control



Recording



Shutter-release



Zoom / Focus



Bulb Shooting

Image: Examples of the remote's multi-functional capabilities, including recording, shutter release, zoom/focus, and bulb shooting.

## 4. COMPATIBILITY

This remote control is compatible with the following Nikon camera models:

- **Nikon Z Series:** Z6 III, Z30, Z50, Z50II, Zfc, Zf, Z6II, Z7II, Z5 (with V1.40 or later firmware update)
- **Nikon Coolpix Series:** A1000, B600, P1000, P950

### Important Notes:

- Nikon Z series cameras do not support remote optical zooming of the lens. However, remote zooming of the previewed image on the camera screen is supported.
- Nikon A1000, P1000, and B600 models do not support assigning functions to the Fn1 and Fn2 buttons on the remote control.

# COMPATIBLE WITH NIKON MODELS

Z6III, Z30, Z50, Z50II, Zfc, Zf, Z6II, Z7II, Z5  
(with v1.40 or later firmware update)  
Coolpix A1000, B600, P1000, P950

Compatible with Nikon Z series cameras do not support remote zoom, but remotely zooming the previewed image is supported.

Compatible with Nikon A1000, P1000, B600 do not support to assign the functions of Fn1 and Fn2 buttons on the remote control.

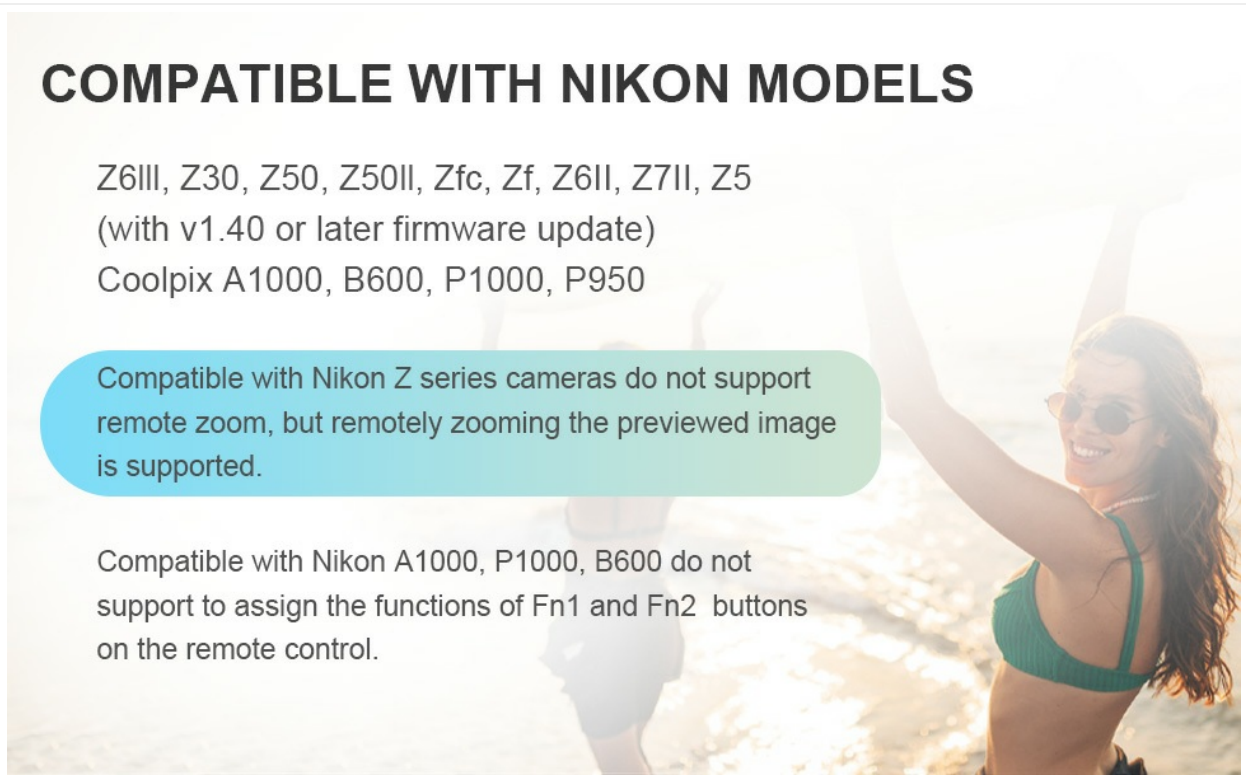


Image: A visual list of Nikon camera models compatible with the remote control, along with important usage notes.

## 5. SETUP AND PAIRING

---

### 5.1 Pairing with Nikon Z Series Cameras

1. On your camera, navigate to the setup menu.
2. Select [**Wireless remote (ML-L7 options)**].
3. Choose [**Save wireless remote controller**] and press the **OK** button.
4. Press and hold the pair button on the remote control for 2 seconds or longer.

Upon successful pairing, the camera and remote control will display connection indicators in the shooting display.



# HOW TO PAIR

When paired with Z series compatible cameras

- 1 Select [ Wireless remote (ML-L7) options ] > [ Save wireless remote controller ] in the camera setup menu and press **OK**.



- 2 Press and hold the pair button on the remote control (2 seconds or longer).

When pairing is complete, the camera and remote control will be connected.  and  are displayed in the shooting display.



**\*You can assign the functions of the Fn1 and Fn2 buttons on the BR-3 through the camera menu.**

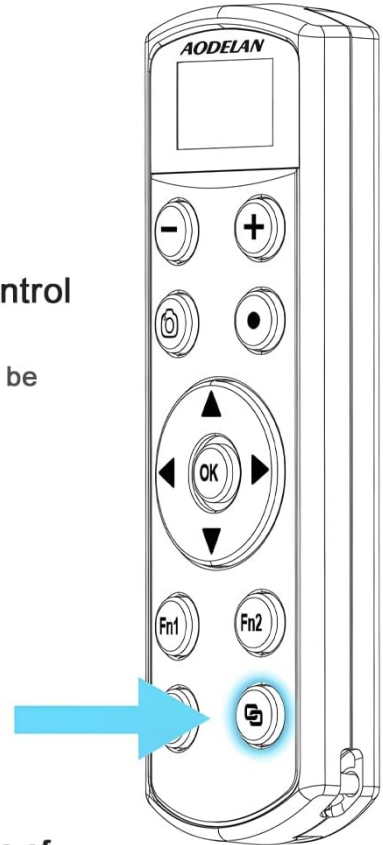


Image: Step-by-step guide for pairing the remote with Nikon Z series cameras, illustrating menu selections and remote button press.

## 5.2 Pairing with Nikon Coolpix Cameras

1. Press the **MENU** button on the camera.
2. Use the multi selector (up/down arrows) to select the **Network menu** icon, then press the **OK** button.
3. Select **Choose connection** and press the **OK** button.
4. Select **Remote control** and press the **OK** button.
5. Select **Connection to remote** and press the **OK** button. The camera will now wait for a connection.
6. Press and hold the pair button on the remote control for at least 2 seconds.

Once pairing is complete, a connection is established, and indicators will appear on the shooting screen.

## Pairing Steps : Compatible with Nikon Coolpix Camera

Before using the remote control for the first time, it must be paired with the camera.

1 Press the MENU button on the camera.

2 Press the multi selector ◀, use ▲▼ to select the (M) menu icon, and press the (OK) button.

3 Select **Choose connection**, and press the (OK) button.

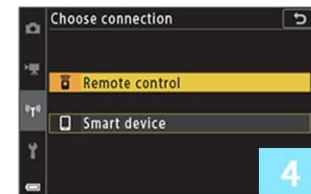
4 Select **Remote control**, and press the (OK) button.

5 Select **Connection to remote** and press the (OK) button.

- Pairing is enabled and the camera waits for the connection to be established.

6 Press and hold (for at least 2 seconds) the pair button on the remote control.

When pairing is complete, a connection is established between the camera and the remote control. When you enter shooting mode, (M) and (R) are displayed on the shooting screen.



\*The Coolpix cameras do not support to assign the function of Fn1 and Fn2 buttons on the BR-3.

Image: Step-by-step guide for pairing the remote with Nikon Coolpix cameras, illustrating menu selections and remote button press.

## 6. OPERATING INSTRUCTIONS

### 6.1 Shooting Photos

For Nikon Z series compatible models, ensure the Photo/video Selector on the camera is set to the photo icon.

- Press the shutter release button on the remote to take a photo.
- For continuous shooting, hold down the shutter release button.
- For self-timer, configure the self-timer settings on your camera, then press the shutter release button on the remote.

### 6.2 Recording Movies

For Nikon Z series compatible models, ensure the Photo/video Selector on the camera is set to the movie icon.

- Press the movie record button on the remote to start recording.

- Press it again to stop recording.

### 6.3 BULB Mode Shooting

When the camera is set to "Bulb" or "Time" mode:

- Press the Shutter release button on the remote to start exposure.
- Press it again to end exposure.

### 6.4 Zooming the Camera

- Press the (-) button on the remote to zoom to the wide-angle side.
- Press the (+) button to zoom to the telephoto side.


**Note:**

- Z series compatible models do not support remote optical zooming. When viewing recorded photos on the camera's screen, use the (-) / (+) buttons on the Remote Control to zoom in/out on the playback image.

## OMNI-DIRECTIONAL CAMERA REMOTE CONTROL

### Shoot Photos



For Nikon Z series compatible models, make sure that the <Photo/video Selector> on the camera is rotated to 


With the camera set to "Bulb" (or "Time") mode, press the Shutter release button on remote to start exposure, press it again to end exposure

### Support Bulb Shooting



### Record movies



For Nikon Z series compatible models, make sure that the <Photo/video Selector> on the camera is rotated to 

Press the movie record button on the remote, movie recording starts, press it again, movie recording stops.

Image: Demonstrates how to shoot photos, use bulb shooting, and record movies with the remote control.

## ZOOMING THE CAMERA



- Press the <-> button on remote to zoom to the wide-angle side or the <+> button to zoom to the telephoto side.
- Z series compatible models do not support remote zooming. When you view the recorded photos on the camera's screen, press the <->/<+> buttons on the Remote Control to zoom out/in.



Image: Illustrates the use of the remote's plus and minus buttons for zooming, with a note on Z series camera limitations.

### 6.5 Remote Camera Settings

The remote control can also be used to navigate camera menus for shooting, playback, and settings adjustments, similar to using the camera's own multi-selector and OK button.

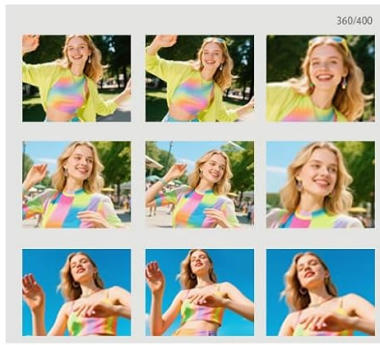
## YOU CAN ALSO SET THE CAMERA REMOTELY



### FOR SHOOTING



### FOR PLAYBACK



### FOR SETTING

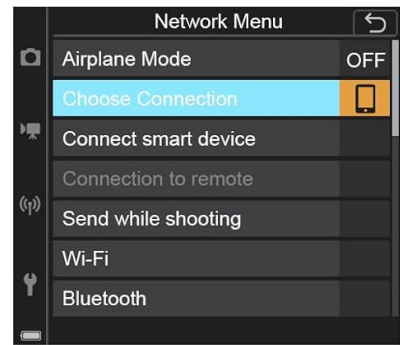


Image: Shows how the remote can be used to set camera functions remotely, including shooting, playback, and accessing the network menu.

## 7. CHARGING THE REMOTE CONTROL

The remote control features a built-in lithium polymer battery. To charge:

- Connect the supplied USB Type-C cable to the remote control's charging port.
- Connect the other end of the cable to a standard USB-C power source (e.g., smartphone charger, computer USB port).
- A full charge takes approximately 1.5 hours and provides up to 10 hours of continuous operation.

## Built-in Rechargeable Battery Convenient and Worry-free

Built-in lithium polymer battery for up to 10 hours of continuous camera control. Type-C charging port, can be recharged by smartphone charger.



Image: The remote control connected to a USB-C cable for charging, emphasizing its built-in rechargeable battery.

## 8. OLED SCREEN DISPLAY

The OLED screen provides visual feedback on the remote's status and current settings:

- **'N' icon:** Indicates the remote is configured for Nikon cameras.
- **Camera icon with signal bars:** Shows Bluetooth connection strength with the camera.
- **'Scanning' text:** Remote is searching for a previously paired camera.
- **'Pairing' text with progress bar:** Indicates the pairing process is active (hold pair button for 2+ seconds to enter this state).
- **'OK!' text:** Remote is successfully paired with the camera.
- **Shutter icon:** Displayed when the shutter-release button is pressed.
- **Movie icon:** Displayed when the movie record button is pressed.
- **Arrow icons:** Displayed when the multi-selector buttons are pressed.
- **Checkmark icon:** Displayed when the OK button of the multi-selector is pressed.
- **'1/2' icon:** Displayed when the Fn1 / Fn2 button is pressed.
- **'W-' / 'T+' text:** Displayed when the wide-angle / telephoto zoom buttons are pressed.

# STATUS AND SETTINGS VISUALIZATION



Control to record a movie



Control to shoot a photo



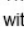


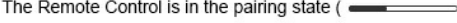






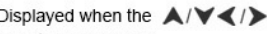




Scanning for the paired camera



Image: Examples of the OLED screen's display, showing indicators for recording, photo shooting, and scanning for a paired camera.

## OLED SCREEN REMOTE: WIRELESS SHUTTER RELEASE FOR NIKON CAMERAS

-  The Remote Control is for Nikon cameras.
-  The Remote Control has established a Bluetooth connection with a camera (  is the connection signal strength)
-  **Scanning** The Remote Control is searching for the camera that has already been paired.  
Except for the power button and pair button, other button functions on the Remote Control do not work in this state.
-  **Pairing** The Remote Control is in the pairing state (  is the pairing process)  
Press and hold the pair button for at least 2 seconds to enter this state
-  **OK!** The Remote Control is successfully paired with the camera
-  **W-** Displayed when the < - > wide-angle button is pressed.\*
-  **T+** Displayed when the < + > telephoto button is pressed.\*
-  Displayed when the shutter-release button is pressed.\*
-  Displayed when the movie record button is pressed.\*
-  Displayed when the  button of the multi selector is pressed.\*
-  Displayed when the OK button of the multi selector is pressed.\*
-  **1/2** Displayed when the Fn1 button / Fn2 button is pressed.\*

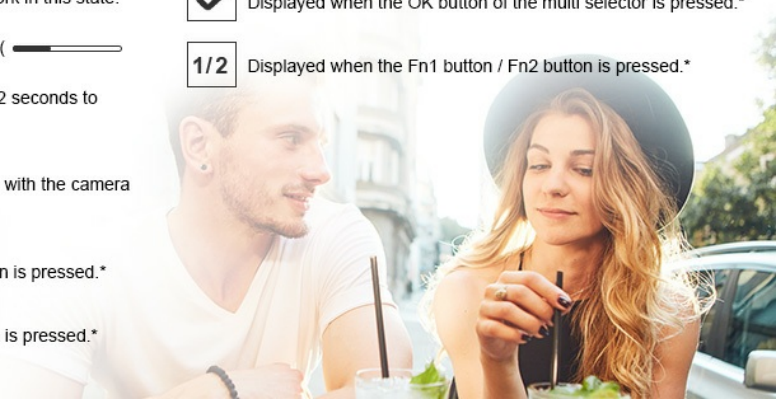


Image: A comprehensive guide to the icons and text displayed on the remote's OLED screen, explaining their meanings.

## 9. SPECIFICATIONS

<b>Power Source</b>	Built-in Lithium-ion Polymer Battery (Nominal 3.7V/0.67Wh (180mAh))
<b>Continuous Operating Time</b>	Approx. 10 hours (with fully charged battery)
<b>Charging Time</b>	Approx. 1.5 hours (Charging voltage: 5V, Charging current: 0.12A)
<b>Connector</b>	USB Type-C (Input, 5V)
<b>Screen</b>	OLED screen, 128x72 dots
<b>Dimensions</b>	3.9 x 1.3 inches (approximate)
<b>Item Weight</b>	1.06 ounces

# ▲ SPECIFICATIONS

**Power:** Built-in lithium-ion polymer battery (nominal 3.7V/0.67Wh(180mAh))

**Continuous operating time:** Approx. 10 hours\* (to continuously control the camera shooting with the fully charged built-in battery)

**Charging time:** Approx 1 hour and 30 minutes\* (charging voltage: 5V, charging current: 0.12A, from low battery level warning to fully charged)

**Connector:** USB Type-C (input, 5V) **Screen:** OLED screen, 128x72 dots

# ▲ PACKING



Image: A visual summary of the product's specifications and included items.

## 10. TROUBLESHOOTING

---

### 10.1 Remote Not Connecting

- Ensure the remote control is charged.
- Verify that the camera's Bluetooth settings are enabled and set to connect to a remote control.
- Repeat the pairing process as described in Section 5.
- Ensure the remote is within the effective operating range (up to 30m/97ft).
- Check for any obstructions between the remote and the camera.

### 10.2 Functions Not Working

- Confirm camera compatibility (refer to Section 4).
- For Z series cameras, remember that remote optical zoom is not supported.
- For Coolpix A1000, P1000, B600, Fn1 and Fn2 buttons are not assignable.
- Ensure the camera's Photo/video Selector is set correctly for the desired function (photo or video).
- Check camera settings for any conflicting configurations.

### 10.3 Short Battery Life

- Ensure the remote is fully charged (approx. 1.5 hours).
- Battery performance may vary based on usage and environmental conditions.
- If battery life significantly degrades, contact customer support.

## 11. MAINTENANCE

---

- Keep the remote control clean and dry. Avoid exposure to moisture or extreme temperatures.
- Use a soft, dry cloth for cleaning. Do not use harsh chemicals or abrasive materials.

- Store the remote in a protective case when not in use to prevent scratches or damage.
- Charge the remote regularly, even if not used frequently, to maintain battery health.

## 12. WARRANTY AND SUPPORT

---

AODELAN products are designed for reliability and performance. For warranty information, please refer to the documentation included with your purchase or visit the official AODELAN website. For technical support or inquiries, please contact AODELAN customer service through their official channels.

Manufacturer: AODELAN