

Machenike KG98

Machenike KG98 Tri-Mode Mechanical Keyboard Instruction Manual

Model: KG98

INTRODUCTION

Welcome to your Machenike KG98 Tri-Mode Mechanical Keyboard. This manual provides detailed instructions for setting up, operating, and customizing your keyboard to enhance your gaming and typing experience. The KG98 features hot-swappable switches, RGB backlighting, and versatile tri-mode connectivity for seamless use across multiple devices.



Image: The Machenike KG98 Tri-Mode Mechanical Keyboard in its White&Black&Orange color scheme, showcasing its compact 98-key layout and RGB sidelit design.

WHAT'S IN THE BOX

- Machenike KG98 Mechanical Keyboard
- Extra 2 Grey Pre-lubed Linear Switches
- Keycap Puller
- USB Cable (Type-A to Type-C)
- User Manual

SETUP AND CONNECTIVITY

The Machenike KG98 keyboard offers three connectivity modes: wired USB, 2.4GHz wireless, and Bluetooth. A multi-functional switch located on the top-right of the keyboard allows for easy switching between these modes.

Wired Connection

Connect the provided USB Type-C cable to the keyboard's port and the USB Type-A end to your computer. Ensure the tri-mode switch is set to the wired (USB) position.

2.4GHz Wireless Connection

Locate the 2.4GHz USB dongle, typically stored magnetically on the underside of the keyboard. Plug the dongle into an available USB port on your device. Set the tri-mode switch on the keyboard to the 2.4GHz wireless position. The keyboard should automatically connect.

Bluetooth Connection

Set the tri-mode switch to the Bluetooth position. On your device (computer, tablet, smartphone), search for Bluetooth devices and select "Machenike KG98" to pair. The keyboard supports multiple Bluetooth profiles, allowing connection to several devices simultaneously.

GR Silver Switch

Linear

Actuation Force

35±5gf

Actuation Point

2.0±0.4mm

Total Travel

3.3±0.3mm

Lifespan

50 million keystrokes

Features: Smooth Linear Feel | Crisp Hi-Fi Sound



Kailh Deep Blue Switch

Linear

Actuation Force

45±5gf

Actuation Point

2.0±0.5mm

Total Travel

3.6±0.4mm

Lifespan

80 million keystrokes

Features: Factory-Lubed | Built-in Light-Guide Post | Gamer-Preferred



Purple-Gold Switch

Linear

Actuation Force

40±3gf

Actuation Point

1.5±0.3mm

Total Travel

3.6±0.3mm

Lifespan

80 million keystrokes

Features: POM Stem | Enhanced Hi-Fi Acoustics | High Translucency



Kailh Ice Cream Pro Max Switch

Actuation Force

45±10gf

Actuation Point

2.0±0.5mm

Total Travel

4.0±0.3mm

Lifespan

80 million keystrokes


Features: POM Housing | Water & Dust Resistant | 5-Pin Stability



Image: Diagram illustrating the three connectivity modes: Type-C wired, 2.4G wireless, and Bluetooth, along with key features like 3rd-Gen Tuned Stabilizers and Full Hot-Swap capability.

Product Parameter

GAME YOUR WAY

Configuration				
Layout	98-key layout			
Connection Mode	Tri-mode connection			
Color Scheme	White & Blue	White/Blue & White/Purple	Black & Orange	Black & Orange
Decoration	RGB light strip			
Positioning Plate	PC positioning plate		FR4 gold-plated plate	
Keycaps	OEM PBT			

Structure	Gasket		
Filling	5-layer acoustic padding		
PCB	1.2 mm Felix-cut PCB		
Backlight	RGB		
Battery	5000mAh	8000mAh	10000mAh
System Compatibility	WIN/MAC		
Switch	Limited-travel toggle switch		

Product images and screen content are for illustration only; actual product appearance (including but not limited to color, size, UI, configuration) may vary. Data are theoretical values from MechMaster's internal lab tests; actual performance may vary by environment.

Image: The Machenike KG98 keyboard shown in a desk setup, highlighting its Type-C, 2.4G Wireless, and Bluetooth connectivity options.

OPERATING YOUR KEYBOARD

RGB Backlighting

The KG98 features vibrant RGB backlighting with multiple effects and adjustable brightness. Use the Function (Fn)

key in combination with other keys to control lighting:

- **Fn + Shift:** Cycle through various lighting effects.
- **Fn + Enter:** Change solid backlight colors (red, green, blue, yellow, purple, cyan, white).
- **Fn + Up/Down Arrow:** Adjust backlight brightness (4 levels).
- **Fn + Left/Right Arrow:** Adjust backlight flow speed.

16.8 Million RGB Backlight

A variety of adjustable lighting effects to maximize the gaming atmosphere



Image: The Machenike KG98 keyboard showcasing its 16.8 million RGB backlighting with various adjustable lighting effects.

Multi-functional Toggle Switch

The dedicated multi-functional toggle switch on the top-right of the keyboard allows for quick adjustments:

- **Slide Up/Down:** Adjust volume.
- **Press In:** Mute/Unmute audio.
- **Rotate:** Cycle through RGB lighting modes.

Per-Key Flex-Cut

New generation of fine-tuned satellite axis



Image: A close-up view of the multifunction toggle switch on the MACHENIKE KG98 keyboard, used for adjusting volume, muting, and cycling through RGB lighting modes.



Image: A detailed view of the multifunction toggle switch, emphasizing its ease of use for volume control and RGB lighting adjustments.

Battery Management

The KG98 is equipped with an 8000mAh high-capacity battery for extended wireless use. Connect the USB-C cable to charge the keyboard. The keyboard features an automatic sleep mode to conserve battery life during periods of inactivity. This can be configured via the software.

CUSTOMIZATION AND MAINTENANCE

The Machenike KG98 is designed for extensive customization and easy maintenance, allowing you to personalize your typing and gaming experience.

Hot-Swappable Switches

The keyboard features hot-swappable switch sockets, meaning you can easily remove and replace switches without soldering. Use the included keycap puller and switch puller to change switches. The keyboard supports both 3-pin and 5-pin switches.

GR Silver Switch

Linear

Actuation Force

35±5gf

Actuation Point

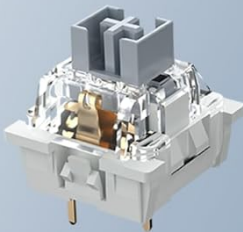
2.0±0.4mm

Lifespan

50 million keystrokes

Total Travel

3.3±0.3mm



Features: Smooth Linear Feel | Crisp Hi-Fi Sound

Kailh Deep Blue Switch

Linear

Actuation Force

45±5gf

Actuation Point

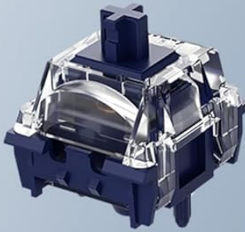
2.0±0.5mm

Lifespan

80 million keystrokes

Total Travel

3.6±0.4mm



Features: Factory-Lubed | Built-in Light-Guide Post | Gamer-Preferred

Purple-Gold Switch

Linear

Actuation Force

40±3gf

Actuation Point

1.5±0.3mm

Lifespan

80 million keystrokes

Total Travel

3.6±0.3mm



Features: POM Stem | Enhanced Hi-Fi Acoustics | High Translucency

Kailh Ice Cream Pro Max Switch

Actuation Force

45±10gf

Actuation Point

2.0±0.5mm

Lifespan

80 million keystrokes

Total Travel

4.0±0.3mm



Features: POM Housing | Water & Dust Resistant | 5-Pin Stability

Image: A detailed view of the keyboard's internal structure, highlighting the Per-Key Flex-Cut design and a close-up of a pre-lubed linear switch.

Premium 5-Layer Acoustic Filling Gasket Design

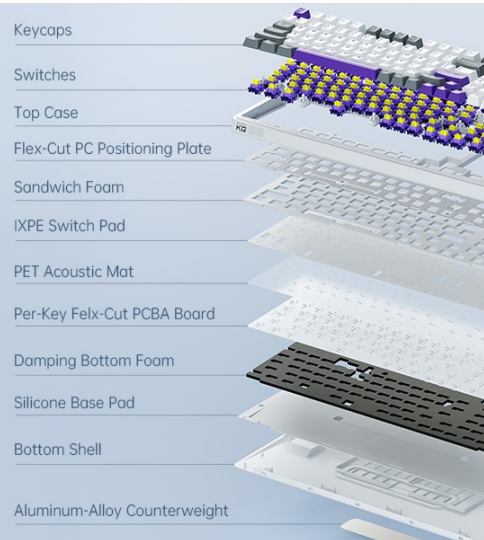


Image: A comparison of different linear switch types compatible with the Machenike KG98, including GR Silver, Kailh Deep Blue, Purple-Gold, and Kailh Ice Cream Pro Max switches, detailing their actuation force, actuation point, lifespan, and features.



Image: Close-up images of four different linear switch types: GR Silver, Kailh Deep Blue, Purple-Gold, and Kailh Ice Cream Pro Max, with their specifications.

Keycap Replacement

The keyboard comes with durable PBT keycaps. You can replace them with any compatible keycaps of your choice using the provided keycap puller. The south-facing RGB LEDs ensure that custom shine-through keycaps will be well-illuminated.

Software Customization

For advanced customization, including key remapping, macro creation, and detailed RGB lighting effects, download the official Machenike software from the manufacturer's website. The software allows you to create multiple profiles for different uses (gaming, work, etc.).

Acoustic Design and Ergonomics

The KG98 incorporates a premium 5-layer acoustic filling and GASKET structure design to enhance typing feel and reduce noise, providing a more comfortable and precise keystroke experience.

- **GASKET and PCB Single-Key Slotting Design:** Improves keyboard elasticity and stability for precise and comfortable keystrokes.
- **Ergonomic Structural Design:** Optimized for comfort during extended use.
- **Three-Stage Height-Adjustable Feet:** Allows users to set their preferred typing angle.



Multifunction Toggle Switch

Effortlessly adjust volume, mute with one press, and cycle through RGB lighting modes.

Image: An exploded diagram showing the premium 5-layer acoustic filling of the MACHENIKE KG98, including keycaps, switches, top case, Flex-Cut PC Positioning Plate, Sandwich Foam, IXPE Switch Pad, PET Acoustic Mat, Per-Key Flex-Cut PCBA Board, Damping Bottom Foam, Silicone Base Pad, Bottom Shell, and Aluminum-Alloy Counterweight.



Image: A visual representation of the keyboard's internal structure, emphasizing the Premium 5-Layer Acoustic Filling and Gasket Design for improved typing feel and sound.



Image: Close-up views of the PC positioning plate and FR4 gold-plated plate, illustrating the Per-Key Flex-Cut design for enhanced acoustic performance and tactile feedback.



Image: The MACHENIKE KG98 keyboard highlighting its dual-sided RGB light strips, custom engraved metal nameplate, and three-stage height-adjustable feet for ergonomic comfort.

SPECIFICATIONS

Feature	Detail
Model	KG98
Connectivity Technology	BT5.0, 2.4G Wireless, USB Type-C Wired
Keyboard Description	Gasket Wireless Mechanical Keyboard
Key Layout	98 Keys Compact Layout
Switches	Pre-lubed Linear Switches (Hot-Swappable)
Backlighting	RGB Backlit, Dual-Sided RGB Light Strips
Battery Capacity	8000mAh
Product Dimensions	16.61 x 7.48 x 2.16 inches
Item Weight	3.52 pounds
Compatible Devices	Gaming Console, Laptop, PC, Smartphone, Tablet (Windows/Mac)



Image: A table detailing various product parameters and configurations for the Machenike KG98 keyboard, including layout, connection mode, color scheme, positioning plate, keycaps, structure, filling, PCB, backlight, battery capacity, and system compatibility.

TROUBLESHOOTING

- **Connectivity Issues:** Ensure the tri-mode switch is in the correct position for your desired connection type (wired, 2.4GHz, or Bluetooth). For wireless modes, ensure the dongle is properly inserted or Bluetooth is paired.
- **Keyboard Not Responding:** Try connecting via USB cable to ensure it's not a battery issue. Check if the keyboard is in sleep mode and wake it up by pressing any key.
- **RGB Lights Not Working:** Verify that the brightness is not set to the lowest level. Cycle through lighting effects using Fn + Shift.
- **Key Malfunction:** If a specific key is not working, try replacing its switch with one of the spare switches provided, or another working switch from the keyboard, to determine if the switch or the keycap is faulty.
- **Software Issues:** Ensure you have the latest version of the Machenike software installed. If issues persist, try reinstalling the software.

For further assistance, please refer to the detailed user manual included in the box or visit the official Machenike support website.

WARRANTY AND SUPPORT

The Machenike KG98 Mechanical Keyboard comes with a manufacturer's warranty. For detailed information regarding warranty coverage, terms, and conditions, please refer to the warranty card included in your product packaging or visit the official Machenike website. For technical support, product registration, or service inquiries, please contact Machenike customer service through their official channels.

OFFICIAL PRODUCT VIDEO

Your browser does not support the video tag.

Video: An official product video from Machenike US STORE showcasing the features and functionality of the Machenike KG98 Mechanical Keyboard, including unboxing, connectivity options, RGB lighting, and hot-swappable switches.