

Tianfucen BKM400

Tianfucen BKM400 Wireless Headphones for TV Watching Instruction Manual

Model: BKM400 | Brand: Tianfucen

1. INTRODUCTION

The Tianfucen BKM400 Wireless Headphones are designed to provide a high-quality audio experience for TV watching. Featuring dual 40mm drivers, these headphones deliver clear dialogue and balanced bass, ensuring an immersive listening experience without disturbing others. With a robust 150ft (50m) range and ultra-low latency technology (<40ms), you can enjoy perfect lip-sync audio and freedom of movement throughout your home. The headphones are built for comfort with memory protein leather earmuffs and an adjustable headband, suitable for extended use. They offer broad compatibility with various TV audio outputs and boast up to 40 hours of battery life on a single charge.



Figure 1: Tianfucen BKM400 Wireless Headphones and USB Transmitter.

2. WHAT'S IN THE BOX

The package includes the following components:

- Tianfucen BKM400 Wireless Headphones
- USB Transmitter
- Type-C Cable for Charging
- 3.5mm Audio Cable
- Optical Cable
- RCA (Red/White) Cable

Louder and clearer volume TV listening

Never struggle to hear every detail again

16 levels of volume adjustable

OUR 

OTHER 



Figure 2: Package contents including headphones, USB transmitter, and various connection cables.

3. PRODUCT OVERVIEW

3.1. Audio Quality and Low Latency

The BKM400 headphones feature dual 40mm dynamic drivers and a bass digital enhancement unit for rich, clear sound. The ultra-low latency technology (<40ms) ensures audio and video are perfectly synchronized, eliminating lip-sync delay during TV watching.

Deep bass & crystal-clear sound

Experience lossless audio transmission with high-resolution audio codecs—hear every whisper, feel every boom



40mm
dynamic driver

Bass digital
enhancement unit

Higher sensitivity
 $116\pm 3\text{dB}$

Figure 3: Internal components for enhanced audio quality.

3.2. Extended Range and Mobility

With a wireless range of up to 150ft (50m), these headphones allow you to move freely around your home without losing audio connection. This ensures uninterrupted listening even when you step away from the TV.

Long range, low latency

Enjoy TV in perfect sync, anywhere at home

<40ms

Lightning-fast
sync

5.3 chip

Latest Qualcomm

150ft/50m

Unobstructed range

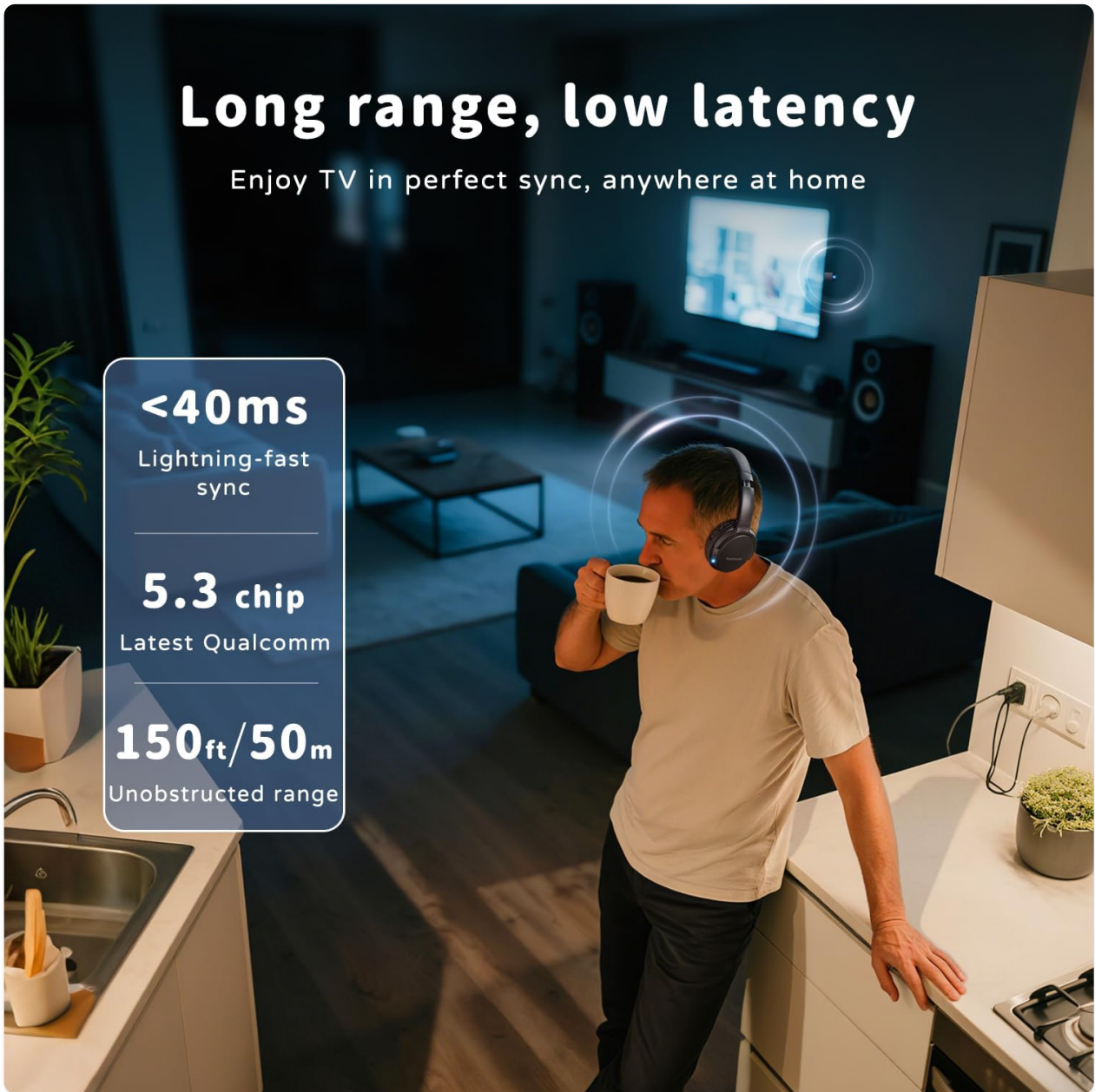


Figure 4: Enjoy TV audio with extended range and low latency.

3.3. Comfort and Durability

The headphones are designed for comfort during long listening sessions, featuring soft memory protein leather earmuffs and an adjustable headband. The robust construction ensures durability.

Built for comfort & strength

All to create true all-day comfortable, pressure-free TV listening experience.



Figure 5: Design features for comfort and durability.

3.4. Battery Life

The BKM400 headphones provide up to 40 hours of continuous playtime on a single charge, allowing for extended use without frequent recharging.



Figure 6: Up to 40 hours of battery life.

4. SETUP INSTRUCTIONS

The Tianfucen BKM400 headphones support multiple audio output options for broad TV compatibility. Please identify the available audio output ports on your TV before proceeding.

4.1. USB Connection Setup

This connection method is applicable if your TV's USB port supports audio output.

1. **Connect the USB Transmitter to TV:** Plug the USB transmitter directly into your TV's USB audio output port.
2. **Turn On and Pair:** Long press the power button on the headphones for 3 seconds to turn them on. When a slow breathing blue light is on the headphone, the pairing is successful.
3. **Set Audio Output:** If there is no sound, adjust your TV's audio output setting to "USB" or try another connection method.

Your browser does not support the video tag.

Video 1: USB Connection Setup Guide. This video demonstrates how to connect the USB transmitter to a TV's USB audio

output port and pair the headphones.



Figure 7: USB Connection Diagram.

4.2. RCA (Red/White) Connection Setup

Use this method if your TV has RCA audio output ports (typically red and white).

1. **Connect RCA Cable:** Plug the RCA cable into the corresponding red and white RCA AUDIO OUT ports on your TV.
2. **Connect to Transmitter:** Connect the other end of the RCA cable to the 3.5mm AUX port on the USB transmitter using the provided 3.5mm to RCA adapter.
3. **Power the Transmitter:** Insert the USB transmitter directly into your TV's USB port for power, or use an external USB power supply (not included).
4. **Turn On and Pair:** Long press the power button on the headphones for 3 seconds to turn them on. When a slow breathing blue light is on the headphone and a slow breathing green light is on the transmitter, the pairing is successful.
5. **Set Audio Output:** If there is no sound, adjust your TV's audio output setting to "Headset" or "External speaker".

Your browser does not support the video tag.

Video 2: RCA (Red/White) Connection Setup Guide. This video illustrates connecting the headphones via RCA cables to a TV.

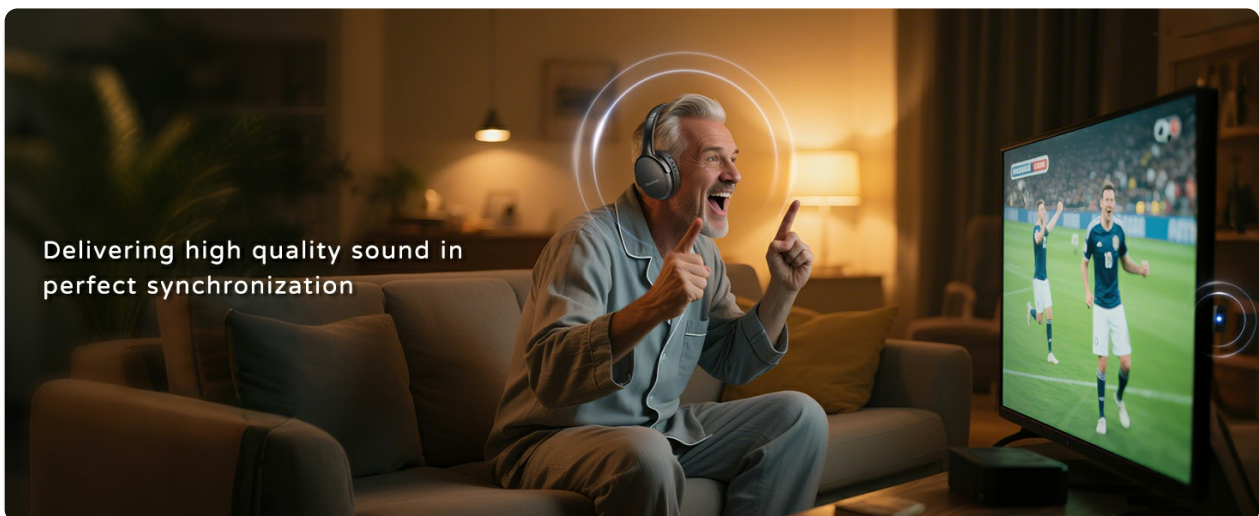


Figure 8: RCA Connection Diagram.

4.3. 3.5mm AUX Connection Setup

Use this method if your TV has a 3.5mm headphone jack.

1. **Connect 3.5mm AUX Cable:** Plug the 3.5mm AUX cable into your TV's 3.5mm audio output port (headphone jack).
2. **Connect to Transmitter:** Connect the other end of the 3.5mm AUX cable into the transmitter's 3.5mm AUX port.
3. **Power the Transmitter:** Insert the USB transmitter directly into your TV's USB port for power, or use an external USB power supply (not included).
4. **Turn On and Pair:** Long press the power button on the headphones for 3 seconds to turn them on. When a slow breathing blue light is on the headphone and a slow breathing green light is on the transmitter, the pairing is successful.
5. **Set Audio Output:** If there is no sound, adjust your TV's audio output setting to "Headset" or "External speaker".

Your browser does not support the video tag.

Video 3: 3.5mm Connection Setup Guide. This video shows how to connect the headphones using a 3.5mm AUX cable.

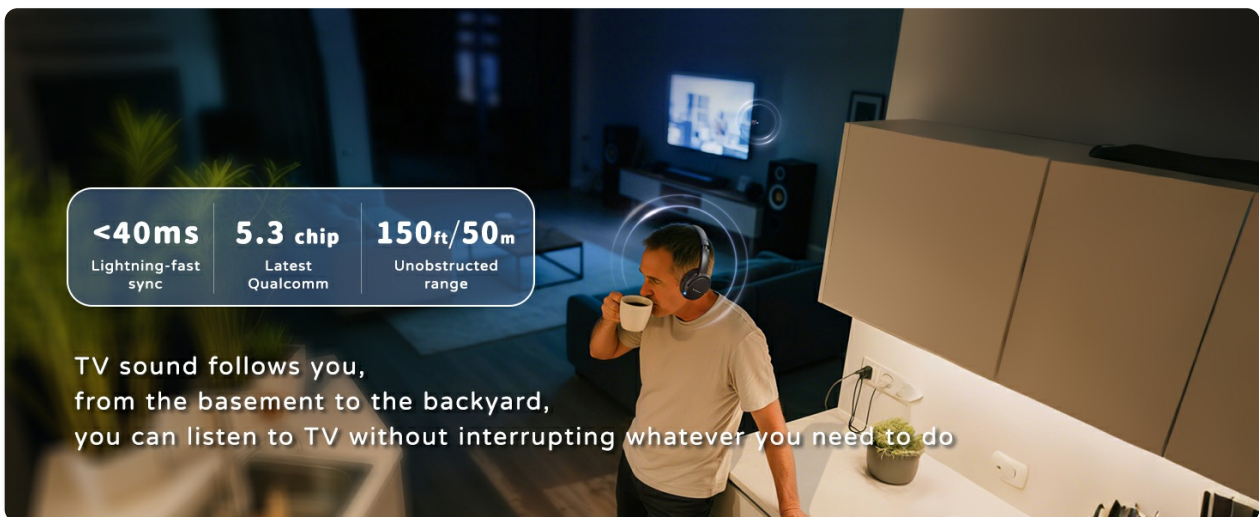


Figure 9: 3.5mm AUX Connection Diagram.

4.4. Optical Connection Setup

Use this method if your TV has a Digital Optical/SPDIF Audio Out port.

1. **Connect Optical Cable:** Plug the optical cable into the Digital Optical/SPDIF Audio Out port on your TV.
2. **Connect to Transmitter:** Connect the other end of the optical cable into the transmitter's optical port.
3. **Power the Transmitter:** Insert the USB transmitter directly into your TV's USB port for power, or use an external USB power supply (not included).
4. **Turn On and Pair:** Long press the power button on the headphones for 3 seconds to turn them on. When a slow breathing blue light is on the headphone and a slow breathing white light is on the transmitter, the pairing is successful.
5. **Set Audio Output:** If there is no sound, ensure your TV's audio format is set to "PCM" and "DOLBY/DTS" is set to "OFF".

Your browser does not support the video tag.

Video 4: Optical Connection Setup Guide. This video demonstrates connecting the headphones via an optical cable to a TV.

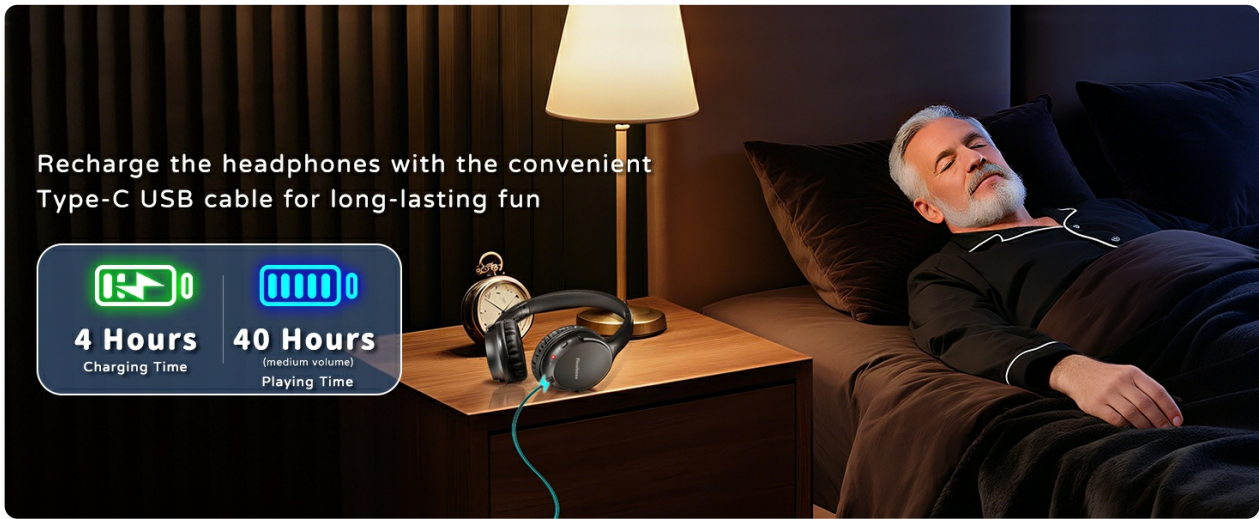


Figure 10: Optical Connection Diagram.

5. OPERATING INSTRUCTIONS

5.1. Power On/Off

To power on the headphones, long press the power button for 3 seconds. To power off, long press the power button again.

5.2. Automatic Reconnection

Once initially paired, the headphones and transmitter will automatically seek each other out and reconnect when powered on, eliminating the need for re-pairing.

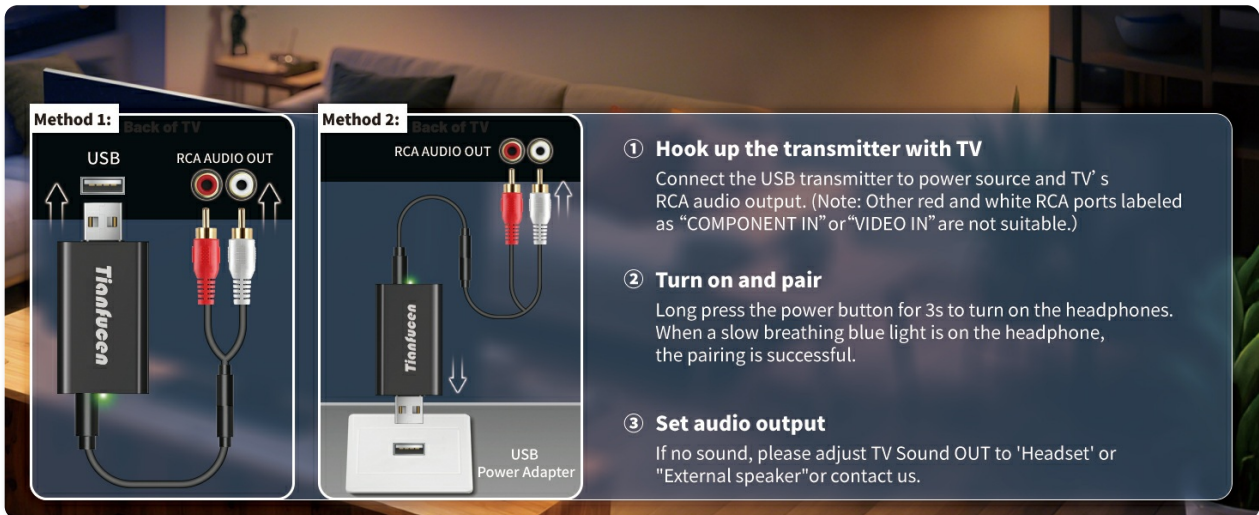


Figure 11: Automatic reconnection for seamless viewing.

5.3. Volume Control

The headphones feature integrated volume controls, allowing you to adjust the audio level directly from the headset without needing to access TV controls.

Only hear your TV, total Immersion



Figure 12: Volume control on headphones.

6. MAINTENANCE

6.1. Charging

Recharge the headphones using the provided Type-C USB cable. A full charge takes approximately 4 hours and provides up to 40 hours of playtime at medium volume.

6.2. Cleaning and Storage

Wipe the headphones with a soft, dry cloth. Avoid using harsh chemicals. Store in a cool, dry place away from direct sunlight and extreme temperatures.

7. TROUBLESHOOTING

7.1. No Sound from Headphones

- **Check Connection:** Ensure the transmitter is correctly plugged into the TV's audio output port and receiving power.

- **Verify Pairing:** Confirm that both the headphones and transmitter are powered on and successfully paired (indicated by breathing blue/green or blue/white lights). If not paired, turn off the headphone and turn it back on to re-initiate pairing.
- **TV Audio Settings:** Access your TV's audio settings.
 - For 3.5mm/USB connections: Set TV audio output to "Headset" or "External speaker".
 - For Optical/RCA connections: Set TV audio output to "PCM" and ensure "DOLBY/DTS" is set to "OFF".

Your browser does not support the video tag.

Video 5: How to set PCM audio format on an Insignia TV. This video provides a guide for adjusting TV audio settings to PCM.

7.2. TV and Headphones Have Sound Simultaneously

If both your TV speakers and headphones are producing sound, this typically occurs with Optical/RCA connections. To resolve this, adjust your TV's audio settings to output sound only through the selected external device (headphones).

7.3. Static Noise

If you experience static noise, try removing the transmitter from the TV's USB port and connecting it to an external power adapter (not included). Also, ensure "DOLBY/DTS" is set to "OFF" in your TV's audio settings.

8. SPECIFICATIONS

Feature	Specification
Model Name	BKM400
Connectivity Technology	Wireless
Wireless Communication Technology	Bluetooth 5.0
Included Components	Headphones, USB Transmitter, Type-C Charging Cable, 3.5mm Audio Cable, Optical Cable, RCA Cable
Material	Fabric, Leather, Synthetic Materials
Specific Uses For Product	Home Theater
Compatible Devices	Television
Item Weight	0.47 Kilograms (1.04 pounds)
Earpiece Shape	Over Ear
Color	Black

9. SUPPORT

If you encounter any problems during use or have suggestions for improvement, please contact our support team. We aim to reply within 10 hours.

Contact Information:

- Email: tianfucen@outlook.com