

## Manuals+

[Q & A](#) | [Deep Search](#) | [Upload](#)

manuals.plus /

› [Pefecon](#) /

› [Pefecon Anti-Theft Blink Doorbell Mount \(Model PC-BLFDM\) Instruction Manual](#)

### Pefecon PC-BLFDM

# Pefecon Anti-Theft Blink Doorbell Mount (Model PC-BLFDM) Instruction Manual

Model: PC-BLFDM

## 1. INTRODUCTION



Figure 1.1: The Pefecon Anti-Theft Blink Doorbell Mount.

This manual provides instructions for the installation and use of the Pefecon Anti-Theft Doorbell Mount, designed for the Blink Video Doorbell (1st Gen and 2nd Gen). This mount offers a drill-free solution for securing your doorbell, ideal for renters or situations where drilling is not permitted.

#### Key Features:

- **Anti-Theft Design:** Constructed from durable metal with hidden screws to deter theft.
- **Drill-Free Installation:** No tools required for mounting; secured with adjustable thumb screws.
- **Motion Sensor Compatibility:** Designed to not obstruct the doorbell's motion sensor.
- **Specific Door Compatibility:** Suitable for inward-swinging doors with specific thickness and gap requirements.

## 2. PACKAGE CONTENTS

---

Verify that all items are present in the package:

- 1 × Pefecon Anti-Theft Doorbell Mount
- Installation Accessories (e.g., thumb screws)
- 1 × Blink Doorbell Key

## 3. COMPATIBILITY

---

### 3.1 Doorbell Compatibility

This mount is specifically designed for the following models:

- Blink Video Doorbell (1st Generation)
- Blink Video Doorbell (2nd Generation)

*Note: The Blink Video Doorbell is not included with this mount.*

# Compatible With



**Blink Video Doorbell  
(2nd Gen)**



**Blink Video Doorbell  
(1st Gen)**

Figure 3.1: The mount is compatible with both 1st and 2nd generation Blink Video Doorbells.

## 3.2 Door Type Compatibility

For proper installation and function, your door must meet the following criteria:

- **Door Type:** Inward-swinging doors only (left or right opening).
- **Door Thickness:** Between 0.82 inches (2.08 cm) and 2.08 inches (5.28 cm).
- **Door-Frame Gap:** Greater than 0.063 inches (0.16 cm).
- **Door Edge:** Must be flat.

The mount is **not compatible** with the following door types:

- Outward-opening doors
- Iron security doors
- Screen doors or storm doors
- Doors with uneven door frames or edges

## Door Type Compatibility Guide



## Not Applicable

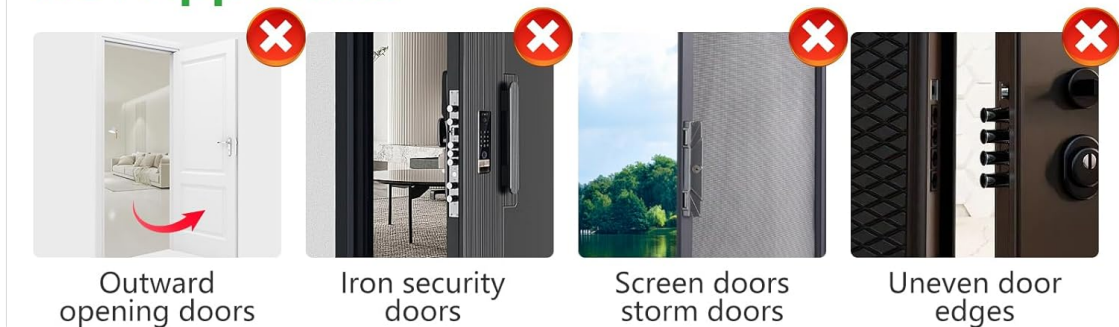


Figure 3.2: Guide to compatible and incompatible door types and dimensions.

## Door edge must be flat



Figure 3.3: The door edge must be flat for secure installation.

### Not Applicable



Figure 3.4: Examples of door types that are not compatible with this mount.

## 4. SETUP AND INSTALLATION

Follow these steps to install your Pefecon Anti-Theft Doorbell Mount:

1. **Prepare the Doorbell:** Insert your Blink Video Doorbell into the mount. Ensure it is seated securely.
2. **Position the Mount:** Place the mount over the edge of your door at the desired height. The doorbell camera should face outwards.
3. **Adjust and Secure:** On the inside of the door, locate the thumb screws. Twist the thumb

screws to adjust the mount's grip on the door. Tighten them firmly until the mount is stable and does not move. Do not overtighten.

4. **Verify Security:** Gently attempt to move the mount. It should be securely fixed to the door. The anti-theft steel plate and hidden screws will prevent easy removal from the outside.



Figure 4.1: Adjusting the thumb screws for a secure, drill-free installation.



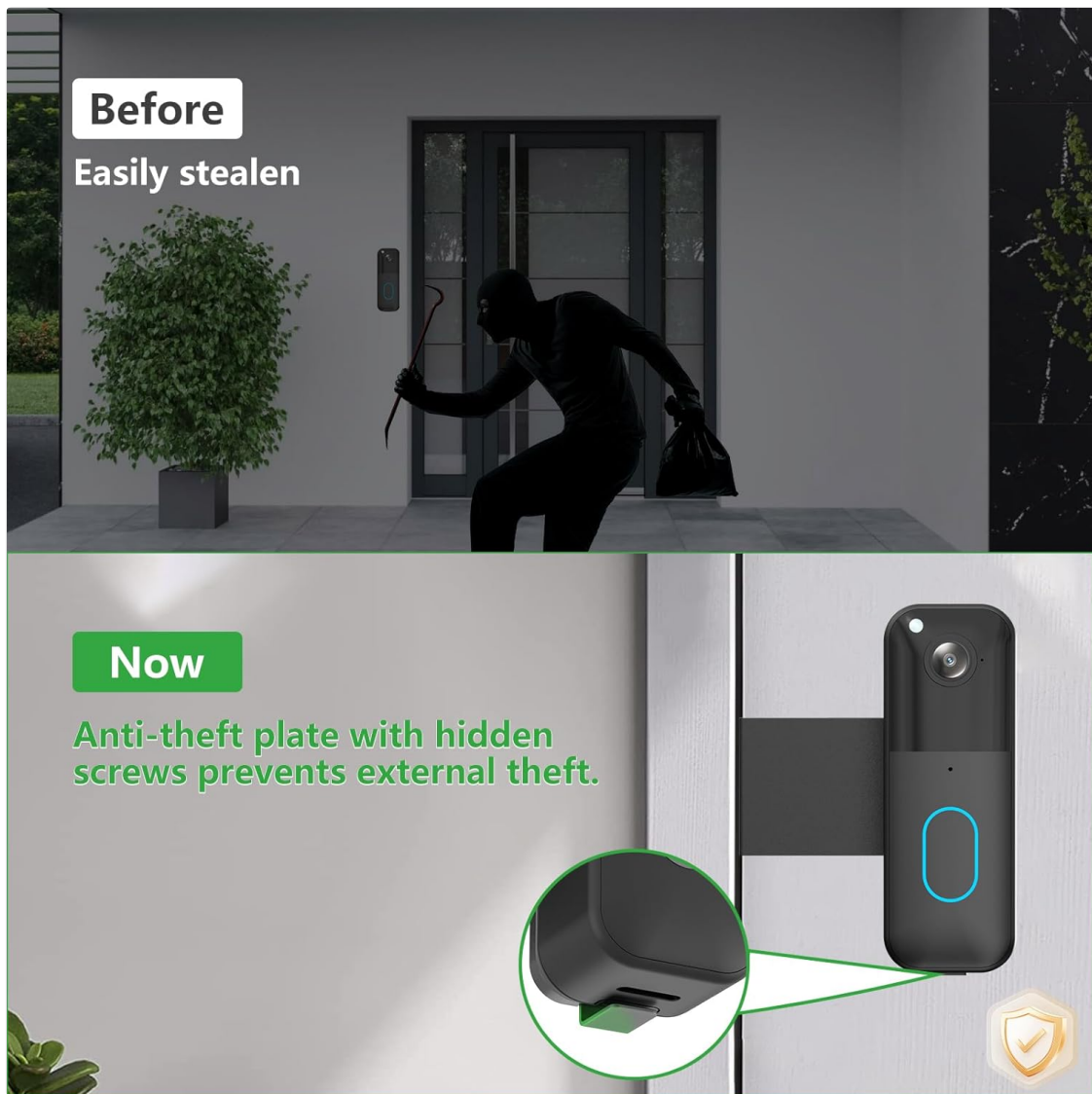


Figure 4.2: The anti-theft design with hidden screws enhances security.

## 5. OPERATION

Once installed, the Pefecon Anti-Theft Doorbell Mount functions as a secure housing for your Blink Video Doorbell. It does not interfere with the doorbell's operation, including its motion sensor, camera view, or two-way audio capabilities.

The mount is designed for various residential settings:

- Homes
- Apartments
- Rental properties
- Dormitories



Figure 5.1: The mount is suitable for diverse living environments.

## 6. MAINTENANCE

The Pefecon Anti-Theft Doorbell Mount requires minimal maintenance. Periodically check the thumb screws to ensure they remain tight and the mount is secure. Clean the mount with a soft, damp cloth as needed. Avoid using abrasive cleaners or solvents.

## 7. TROUBLESHOOTING

Problem	Possible Cause	Solution
Mount is loose or wobbly.	Thumb screws are not tightened sufficiently.	Tighten the thumb screws firmly until the mount is stable. Ensure door thickness is within compatible range.
Cannot install the mount on the door.	Door type or dimensions are incompatible.	Refer to Section 3.2 "Door Type Compatibility" to verify your door meets the requirements (inward-swinging, correct thickness, sufficient gap, flat edge).



Problem	Possible Cause	Solution
Blink Doorbell does not fit into the mount.	Incorrect doorbell model.	Ensure you are using a Blink Video Doorbell (1st Gen or 2nd Gen). This mount is not compatible with other doorbell models.

## 8. SPECIFICATIONS


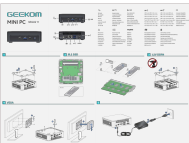
- **Model:** PC-BLFDM
- **Brand:** Pefecon
- **Material:** Metal
- **Color:** Black
- **Item Weight:** Approximately 7.8 ounces (221 grams)
- **Product Dimensions:** Approximately 2.72 x 2.72 x 4.48 inches (6.9 x 6.9 x 11.4 cm)
- **Compatible Doorbell:** Blink Video Doorbell (1st Gen, 2nd Gen)
- **Compatible Door Thickness:** 0.82 - 2.08 inches
- **Required Door-Frame Gap:** > 0.063 inches





## 9. WARRANTY AND SUPPORT

Pefecon products are designed for reliability and performance. For specific warranty information, please refer to the product packaging or contact Pefecon customer support directly. If you encounter any issues or have questions regarding your Anti-Theft Doorbell Mount, please reach out to our dedicated support team for assistance.

Contact information for support can typically be found on the product packaging or the official Pefecon website.

### Related Documents - PC-BLFDM

 <p>C-it Digital Video PC Camera Model XVP510 For Windows User's Guide</p>	<p><a href="#">C-it XVP510 Digital Video PC Camera User's Guide</a></p> <p>User's Guide for the Xirlink C-it XVP510 Digital Video PC Camera. Covers installation, software features like OpArt Video Mail and Video Conferencing, troubleshooting, and FAQs.</p>
 <p>GEEKOM MiniAir 11 Mini PC</p>	<p><a href="#">GEEKOM MiniAir 11 Mini PC: Features, Ports, and Setup Guide</a></p> <p>Explore the GEEKOM MiniAir 11, a compact mini PC. Learn about its ports, installation steps for M.2 SSD and DDR4 RAM, VESA mounting, and important safety information.</p>

	<p><a href="#">GIGABYTE BRIX Ultra Compact PC Kit BIOS Setting Guide</a></p> <p>A comprehensive guide to configuring the BIOS settings for the GIGABYTE BRIX Ultra Compact PC Kit. Learn how to navigate the BIOS, adjust CPU, SATA, and chipset features, manage boot options, secure your system, and save/exit settings.</p>
	<p><a href="#">PC Matic USA Support Contact Guide: Toll-Free Numbers &amp; Live Assistance</a></p> <p>A comprehensive guide to PC Matic USA customer service contact numbers, including toll-free phone lines, live chat, email support, and social media channels, with tips for efficient support.</p>
	<p><a href="#">AVerMedia GC513 Quick Installation Guide and Troubleshooting</a></p> <p>Comprehensive guide for the AVerMedia GC513 game capture card, covering system requirements for PC and PC-Free modes, important notes, and solutions to common troubleshooting issues.</p>
	<p><a href="#">August VGB100 USB 2.0 Video Capture Stick User Manual</a></p> <p>Comprehensive user manual for the August VGB100 USB 2.0 Video Capture Stick, detailing installation, software usage, troubleshooting, and warranty information.</p>