

Manuals+

[Q & A](#) | [Deep Search](#) | [Upload](#)

[manuals.plus](#) /

› [LINKChef](#) /

› [LINKChef Cold Press Juicer User Manual](#)

LINKChef Slow Juicer

LINKChef Cold Press Juicer User Manual

Model: Slow Juicer

INTRODUCTION

Thank you for choosing the LINKChef Cold Press Juicer. This appliance is designed to efficiently extract juice from a variety of fruits and vegetables, preserving maximum nutrients and flavor through its slow masticating process. This manual provides essential information for safe operation, assembly, maintenance, and troubleshooting to ensure you get the most out of your juicer.



LINKchef Rush-Clean Cold Press Juicer

Rush-Clean, Slow-Pressed, Locks
in 95%+ Nutrients

The LINKChef Cold Press Juicer is designed for ease of use and to help you maintain a healthy lifestyle.

IMPORTANT SAFETY INFORMATION

Please read all instructions carefully before using the appliance. Failure to follow these instructions may result in electric shock, fire, or serious injury.

- Always ensure the juicer is properly assembled and all parts are securely locked in place before operation.
- Do not operate the juicer if the power cord or plug is damaged.
- Keep hands and utensils away from the feeding chute during operation to prevent injury. Use the provided food

pusher only.

- Do not process frozen fruits, hard seeds, or ice in the juicer, as this can damage the auger and filter.
- Unplug the juicer from the power outlet before cleaning, disassembling, or when not in use.
- This appliance is not intended for use by children. Supervise children closely if they are near the appliance.
- The juicer is equipped with a safety lock mechanism; it will not operate if the lid is not fully closed.



The juicer automatically stops when the lid is opened, ensuring safety during use, especially with children present.

PRODUCT OVERVIEW AND COMPONENTS

Familiarize yourself with the parts of your LINKChef Cold Press Juicer:

- 1. Feeding Chute:** Wide opening for inserting whole fruits and vegetables.
- 2. Auger:** The spiral component that crushes and presses produce.
- 3. Filter:** Separates juice from pulp. Features 1.0mm and 0.5mm double-layer filter holes for smooth juice.
- 4. Juice Outlet:** Where the extracted juice flows out.
- 5. Pulp Outlet:** Where the dry pulp is expelled.
- 6. Motor Base:** Contains the motor and control knob.
- 7. Juice Container:** Collects the fresh juice.
- 8. Pulp Container:** Collects the separated pulp.
- 9. Food Pusher:** Used to gently guide produce into the feeding chute.
- 10. Cleaning Brush:** For easy cleaning of the filter and other parts.



The LINKChef Cold Press Juicer features a sleek design with clearly visible juice and pulp outlets.

Stainless Steel Filter Built to Last & Safe

One-Piece Filter - Easy Clean up & Assembly

1.0mm

one layer
of filter holes



0.5mm

double layer
filter hole



The durable stainless steel filter ensures smooth juice and easy cleanup.



All essential components are included for a complete juicing solution.

SETUP

Follow these steps to assemble your juicer before first use:

1. Place the motor base on a stable, flat surface.
2. Align the juicing bowl with the motor base and twist it clockwise until it locks into place.
3. Insert the auger into the center of the juicing bowl.
4. Place the filter basket over the auger, ensuring it sits firmly.
5. Attach the feeding chute assembly, aligning the arrows on the chute and the juicing bowl, then twist clockwise until it clicks securely.
6. Position the juice container under the juice outlet and the pulp container under the pulp outlet.
7. Plug the power cord into a grounded electrical outlet.

Easy Assembly & Clean up

Quick-Release Parts Designed for Your Convenience and Efficiency



Assembly is quick and straightforward, designed for user convenience.

Easy Assembly in Just 3 Steps



Detailed steps for assembling the juicer, ensuring proper setup for operation.

OPERATING INSTRUCTIONS

Preparing Ingredients

- Wash all fruits and vegetables thoroughly.
- For most produce, the 4.35-inch wide chute allows for whole fruits and vegetables, reducing prep time.
- Remove large, hard seeds (e.g., peach, avocado pits) and tough skins (e.g., pineapple, melon rinds).
- Cut larger items if they do not fit the chute, but avoid excessively small pieces.
- Do not juice overly soft or starchy fruits like bananas or avocados, as they may clog the juicer.

Juicing Process

1. Ensure the juicer is assembled correctly and containers are in place.
2. Turn the control knob to the "ON" position. The juicer operates at a low speed of 45 RPM for cold pressing.
3. Gradually feed prepared ingredients into the feeding chute. For best results, do not force ingredients. The juicer's self-feeding mechanism will draw them in.
4. Use the food pusher only if necessary to gently guide ingredients.
5. The juicer will automatically separate juice into the juice container and pulp into the pulp container.
6. When finished, turn the control knob to the "OFF" position and unplug the juicer.

Juice More in One Go

Perfect for Families & Weekly Prep

42oz Capacity Lets You Easily Craft Rich Juice for
the Whole Family



The wide chute allows for juicing whole fruits and vegetables, saving preparation time.

Hands-Free & Save Time

Simply Add Entire Recipe at Once & Walk Away

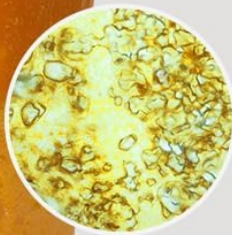


Enjoy hands-free juicing; simply load ingredients and let the machine do the work.

Full Nutrition, Pure Flavor Preserve Every Drop of Nature

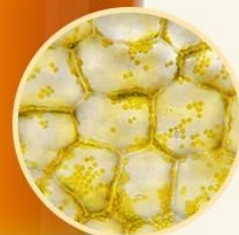


Juice by Centrifugal juicer and Blender



High-speed spinning blades keep heating ingredients—zap nutrients, wreck texture, speed oxidation

Orange Juice by **LINKchef**



Hand-squeezed feel, no compromise nutrients, color, cells stay true

The cold press technology ensures full nutrient retention and pure flavor, unlike traditional juicers.

More Juice, Less Waste Get Every Last Drop

200 Nm High Torque Increases Juice Yield
by 30% than Traditional Juicers

30%



Other

Linkchef



Maximize your juice yield with the efficient cold press extraction, reducing waste.

Fresh and Smooth Juicing Zero Pulp, No Bits

Preserves 100% Freshness and Nutrients
with Cold-Press Extraction

100%



Experience fresh and smooth juicing with 100% freshness and nutrients preserved.

Refreshing Sorbet

Enjoy different flavors of sorbet at home



Beyond juicing, the machine can also be used to create refreshing sorbets from fruit pulp.

MAINTENANCE AND CLEANING

Regular cleaning ensures optimal performance and longevity of your juicer.

Disassembly for Cleaning

1. Unplug the juicer from the power outlet.
2. Remove the juice and pulp containers.
3. Twist the feeding chute assembly counter-clockwise to unlock and remove it.
4. Lift out the filter basket and then the auger.
5. Twist the juicing bowl counter-clockwise to unlock and remove it from the motor base.

Cleaning Instructions

- Rinse all detachable parts (feeding chute, auger, filter, juicing bowl, containers) under running water immediately after use to prevent pulp from drying.
- Use the provided cleaning brush to remove any stubborn pulp from the filter mesh.
- All detachable parts are dishwasher safe for convenient cleaning. Place them on the top rack of your dishwasher.
- Wipe the motor base with a damp cloth. Never immerse the motor base in water or any other liquid.
- Ensure all parts are completely dry before reassembling or storing the juicer.

Dishwasher Safe

The Simple Design Makes it Easy to
Clean Hard-to-Reach Areas



The simple, integrated design makes parts easy to clean and dishwasher safe.



Quick rinsing and dishwasher compatibility simplify your daily routine.

TROUBLESHOOTING

Problem	Possible Cause	Solution
Juicer does not turn on.	Not properly assembled; safety lock not engaged. Power cord not plugged in.	Ensure all parts are securely locked into place. Check power connection.
Juicer stops during operation.	Overload protection activated. Lid opened during operation.	Turn off, unplug, and clear any blockages. Allow motor to cool. Ensure lid is fully closed.
Pulp is wet.	Ingredients too soft or watery.	This is normal for some soft fruits. For harder produce, ensure slow, steady feeding.
Juicer is clogged.	Too much produce fed at once, or fibrous ingredients.	Turn the knob to the "Reverse" (REV) position for a few seconds to clear the blockage, then switch back to "ON".
Loud noise during operation.	Hard ingredients or improper assembly.	Ensure no hard objects (e.g., pits) are in the chute. Check assembly.

SPECIFICATIONS

- Brand:** LINKChef
- Model Name:** Slow Juicer
- Color:** Green
- Product Dimensions:** 13"D x 7.3"W x 16.62"H
- Item Weight:** 3.1 pounds
- Maximum Power:** 220 Watts
- Motor:** 200W with 200Nm high torque
- Speed:** 45 RPM/min (low speed)

Voltage: 120 Volts

Capacity: 2.6 Pounds (approx. 42 oz for juice container)

Special Features: BPA-Free Safe Material, Cold Press Extraction, Easy to Clean, Whole Fruit Processing, Smart Anti-Clogging, Safety Features

Recommended Uses: Apple, Beetroot, Carrot, Celery, Cucumber, Ginger, Grape, Grapefruit, Kale, Lemon, Orange



The compact design allows for easy storage on countertops or inside kitchen cabinets.

WARRANTY AND SUPPORT



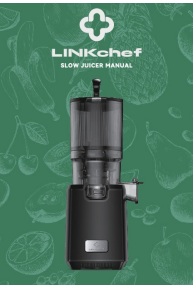

LINKChef offers an extended 5-year warranty for this cold pressed juicer. For any questions, concerns, or support needs, please contact LINKChef customer service. They provide 24/7 US customer support to assist you with your product. Please refer to the contact information provided in your product packaging or visit the official LINKChef website for the most up-to-date support details.



© 2025 LINKChef. All rights reserved.

Related Documents - Slow Juicer

	<p>LINKChef Slow Juicer Manual: Safety, Operation, and Maintenance Guide</p> <p>Comprehensive user guide for the LINKChef Slow Juicer, covering essential safety instructions, step-by-step assembly and operation, cleaning procedures, troubleshooting tips, and product specifications.</p>
	<p>Slow Juicer Instruction Manual: Assembly, Operation, and Maintenance</p> <p>Comprehensive guide for operating and maintaining your slow juicer, covering assembly, safety regulations, usage tips, cleaning instructions, troubleshooting, and warranty information.</p>

	<p>LINKChef SJ-051 Master Series Whole Slow Juicer User Guide</p> <p>Comprehensive user guide for the LINKChef SJ-051 Master Series Whole Slow Juicer, covering assembly, operation, safety instructions, cleaning, maintenance, troubleshooting, and specifications.</p>
	<p>LINKChef Slow Juicer: Quick Start Guide & Assembly Instructions</p> <p>Get started with your LINKChef Slow Juicer. This guide provides essential information on assembly, disassembly, and cleaning for optimal performance. Learn how to use your juicer safely and effectively.</p>
	<p>LINKChef Kaltpressensafters Bedienungsanleitung</p> <p>Umfassende Anleitung für den LINKChef Kaltpressensafters, die wichtige Sicherheitshinweise, Montage, Bedienung und Wartung abdeckt, um die optimale Nutzung des Geräts zu gewährleisten.</p>
	<p>LINKChef Slow Juicer Quick Start Guide: Assembly, Use, and Maintenance</p> <p>Get started with your LINKChef Slow Juicer. This guide provides essential information on parts overview, assembly, disassembly, cleaning, and maintenance for optimal juicing performance.</p>

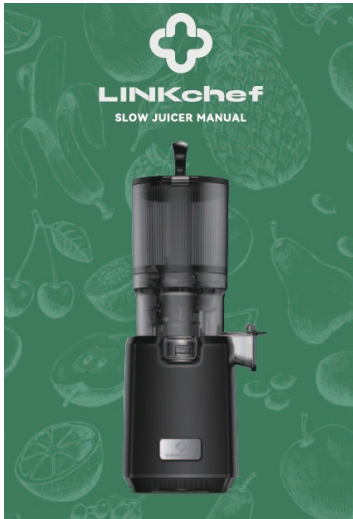
Documents - LINKChef – Slow Juicer



[LINKChef Slow Juicer: Quick Start Guide & Assembly Instructions](#)

Get started with your LINKChef Slow Juicer. This guide provides essential information on assembly, disassembly, and cleaning for optimal performance. Learn how to use your juicer safely and effectively.

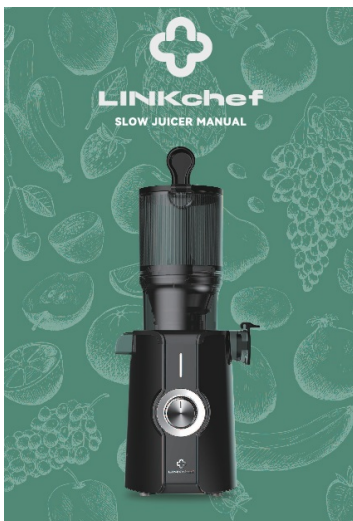
lang:en score:47 filesize: 2.57 M page_count: 34 document date: 2025-08-21



[LINKChef Slow Juicer Manual: Safety, Operation, and Maintenance Guide](#)

Comprehensive user guide for the LINKChef Slow Juicer, covering essential safety instructions, step-by-step assembly and operation, cleaning procedures, troubleshooting tips, and product specifications.

lang:en **score:43** filesize: 4.39 M page_count: 16 document date: 2025-08-21

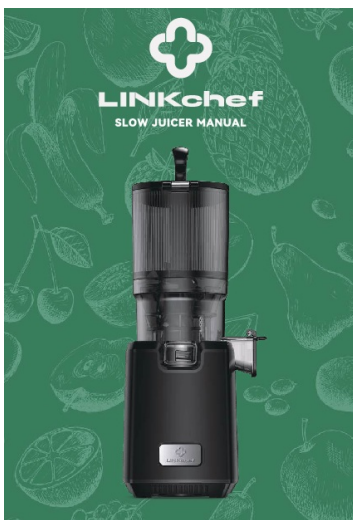


[\[pdf\] User Manual](#)

Afficher le manuel et les informations de sécurité Extracteur jus vertical Azmsary Slow Juicer Sans No Avec goulotte d Prep bol original media s mpwA5kYE5pqr |||

4 Vielen Dank fr den Kauf des LINKchef **Slow Juicers**. Bitte lesen Sie diese Anweisungen sorgfältig durch, bevor Sie dieses Produkt zum ersten Mal verwenden. DE WICHTIGE SICHERHEITSHINWEISE: 1. Stellen Sie sicher, dass die Stromversorgung 220V-60Hz beträgt. 2. Dieses Gert ist ausschließlich fr den Ha...

lang:de **score:24** filesize: 1.59 M page_count: 48 document date: 2025-03-28



[\[pdf\] User Manual](#)

LINKchef SLOW JUICER MANUAL 2 мая 2025 г — 351 1000 30900 800 25700 20 600 500 15 400 10 300 200 5 100 OZ Achten Sie darauf dass die Nut des Dichtungsringes gut in Saftschüs sel C1a3cGs9tL ref dp product quick view m media amazon images I |||

...

lang:de **score:18** filesize: 7.13 M page_count: 52 document date: 2024-08-30

