

[Manuals.plus](#) /

> [Patikuin](#) /

> Patikuin Vanity Desk with Mirror and Lights (Model 53GG5BYkxHxX3u1zeeCYoQ3T) User Manual

Patikuin 53GG5BYkxHxX3u1zeeCYoQ3T

Patikuin Vanity Desk with Mirror and Lights

Model: 53GG5BYkxHxX3u1zeeCYoQ3T

Brand: Patikuin

1. PRODUCT OVERVIEW

The Patikuin Vanity Desk is designed to enhance your daily beauty routine with its integrated features and ample storage. This unit includes a lighted mirror, power outlets, and various storage compartments.



Image 1.1: Overview of the Patikuin Vanity Desk highlighting its key features including the push-and-pull mirror, large and small drawers, open shelves, hidden storage, AC outlets, USB ports, hairdryer rack, and upholstered stool.

2. SETUP AND ASSEMBLY

User assembly is required for this vanity desk. Please follow the included instruction manual carefully. Ensure all parts are present before beginning assembly.

2.1 Unpacking and Inventory

1. Carefully unpack all components from the packaging.
2. Verify that all parts listed in the assembly manual are present and undamaged. Contact customer support immediately if any parts are missing or damaged.

2.2 Assembly Instructions

1. Refer to the detailed step-by-step instructions provided in the separate assembly manual.
2. Ensure all screws and fasteners are tightened securely, but do not overtighten.

3. Install the anti-tip design at the back of the vanity desk to secure it to a wall, preventing accidental tipping.

2.3 Placement

Position the vanity desk on a flat, stable surface. Ensure there is access to a power outlet for the mirror lights and charging station functionality.

3. OPERATING INSTRUCTIONS

3.1 LED Lighted Mirror

The mirror features three adjustable LED light modes and dimmable brightness.

1. **Power On/Off:** Press the power button on the mirror frame to turn the lights on or off.
2. **Change Color Mode:** Short press the color mode button to cycle through Warm White, Natural Light, and Cool Light settings.
3. **Adjust Brightness:** Press and hold the brightness adjustment button (usually marked with '+' or '-') to increase or decrease the light intensity.

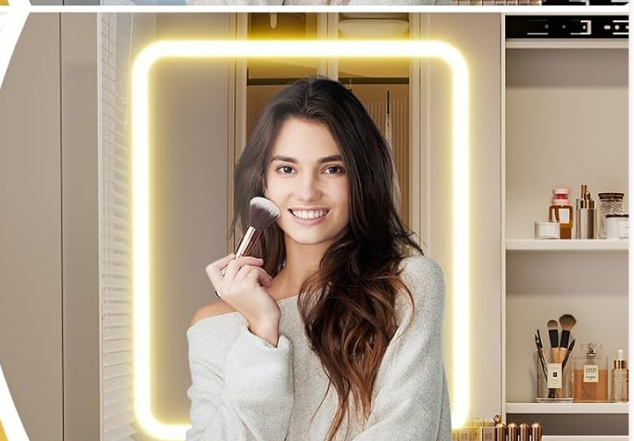
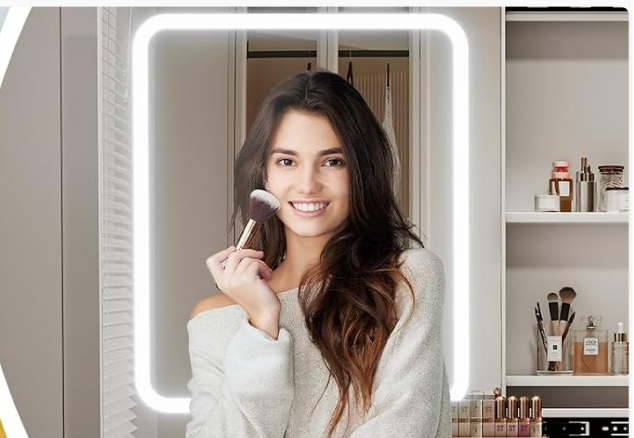


Image 3.1: The LED mirror offers three distinct lighting colors: Warm White for office and indoor makeup, Cold White for outdoor makeup, and Warm Yellow for evening or party makeup.

3.2 Charging Station

The vanity desk is equipped with integrated power outlets and USB ports for convenience.

1. **AC Outlets:** Use the two 125V/12A AC outlets to power devices such as hair dryers, curling irons, or other small appliances.
2. **USB Ports:** Use the two 5V/2A USB ports to charge mobile phones, tablets, or other USB-powered devices.
3. **Hairdryer Holder:** Utilize the dedicated holder for convenient storage of your hairdryer.



Image 3.2: The integrated charging station includes two AC outlets and two USB ports, along with a convenient hairdryer rack, powered by a 4.9-foot cord.

3.3 Sliding Mirror and Storage

The mirror is designed to slide, revealing hidden storage compartments.

1. **Accessing Hidden Storage:** Gently slide the mirror left or right along its track to reveal the shelves behind it.

2. **Adjusting Mirror Position:** The sliding feature allows you to adjust the mirror's position for optimal viewing angles.

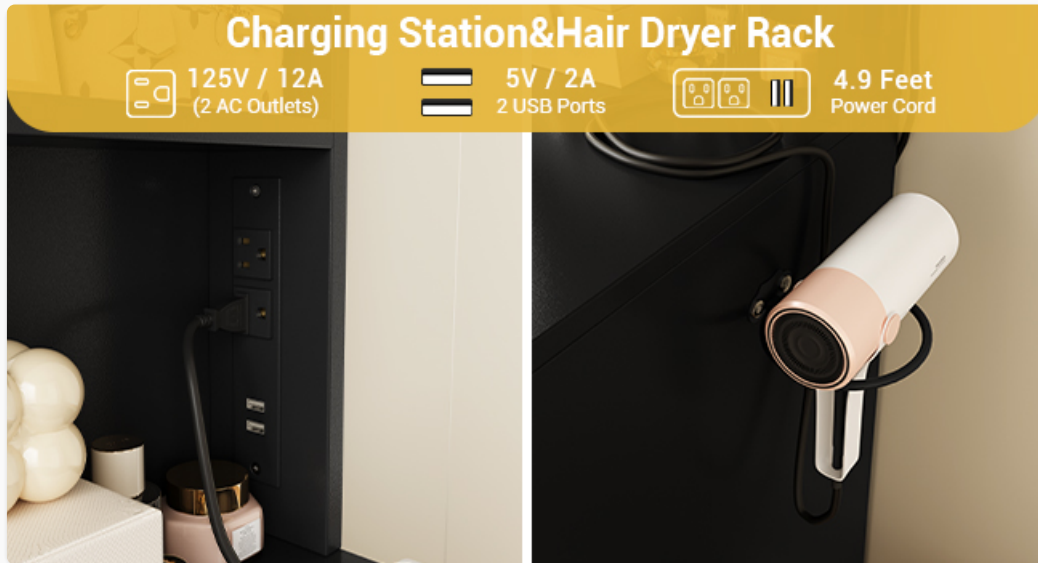


Image 3.3: The mirror can be pushed or pulled to slide horizontally, increasing private storage space behind it.

3.4 Storage Drawers and Shelves

Organize your cosmetics, jewelry, and skincare products using the various storage options.

- Utilize the 4 sliding drawers for items requiring enclosed storage.
- Place frequently used items on the 3 open shelves for easy access.
- The 2 hidden cabinets behind the mirror provide discreet storage for personal items.

4. MAINTENANCE

Regular maintenance ensures the longevity and appearance of your vanity desk.

4.1 Cleaning

- **Wood Surfaces:** Wipe wood surfaces with a soft, damp cloth. Avoid abrasive cleaners or harsh chemicals that may damage the finish.
- **Mirror:** Clean the mirror with a glass cleaner and a lint-free cloth. Do not spray cleaner directly onto the mirror; apply it to the cloth first.
- **Cushioned Stool:** Spot clean the upholstered stool with a mild fabric cleaner as needed.

4.2 Electrical Safety

- Always unplug the vanity desk from the power source when cleaning or performing maintenance on electrical components.
- Avoid spilling liquids near the power outlets or USB ports.
- Do not overload the electrical outlets.

5. TROUBLESHOOTING

If you encounter issues with your vanity desk, refer to the following common solutions.

- **LED Lights Not Working:**
 - Ensure the power cord is securely plugged into a functional wall outlet.
 - Check if the power button on the mirror is pressed.
- **Power Outlets/USB Ports Not Functioning:**
 - Verify the main power cord is connected.
 - Test the wall outlet with another device to confirm it is working.
 - Ensure devices are properly plugged into the vanity's outlets/ports.
- **Drawers Sticking or Not Sliding Smoothly:**
 - Check for any obstructions within the drawer slides.
 - Ensure the desk is on a level surface, as unevenness can affect drawer alignment.
- **Mirror Not Sliding Smoothly:**
 - Inspect the mirror tracks for any debris or obstructions.
 - Gently clean the tracks if necessary.

6. SPECIFICATIONS

Feature	Detail
Model Number	53GG5BYkxHxX3u1zeeCYoQ3T
Material	Wood
Color	White
Number of Drawers	4
Item Weight	102.3 pounds
Product Dimensions	40.94 x 27.56 x 9.06 inches
Power Outlets	2 AC Outlets (125V/12A)
USB Ports	2 USB Ports (5V/2A)
Power Cord Length	4.9 feet
Assembly Required	User assembly is required.



Image 6.1: Detailed dimensions of the vanity desk, mirror, and stool components.

7. WARRANTY INFORMATION

Warranty details for the Patikuin Vanity Desk are typically provided with your purchase documentation. Please refer to these documents or contact Patikuin customer support for specific warranty terms and conditions.

8. CUSTOMER SUPPORT

For any questions, assistance with assembly, troubleshooting, or warranty inquiries, please contact Patikuin customer support through the retailer where the product was purchased or visit the official Patikuin website for contact information.

