

hogance HKRC004

hogance Kindle Support with RF Remote Page Turner (HKRC004) User Manual

Model: HKRC004 | Brand: hogance

1. INTRODUCTION

This hogance Kindle Support with RF Remote Page Turner (Model HKRC004) is designed to enhance your reading experience by providing hands-free operation. It combines a stable, adjustable stand with a remote page-turning device, allowing you to read comfortably without needing to hold your e-reader or tablet. This manual provides instructions for setup, operation, and maintenance.

The remote page turner utilizes radio frequency technology for effortless page turning on compatible capacitive screen devices. The stand offers 360-degree adjustability for optimal viewing angles, reducing neck strain and arm fatigue.

2. WHAT'S IN THE BOX

- 1x Kindle/Tablet Stand
- 1x Remote Control
- 1x Receiver
- 1x USB Charging Cable
- 1x Lanyard
- 1x User Manual

3. COMPATIBLE DEVICES

3.1. Remote Page Turner Compatibility

The remote page turner is compatible with a wide range of capacitive screen devices, including:

- Kindle models: Kindle 10, Kindle 11, Kindle Scribe, Kindle Paperwhite (KPW, KPW2, KPW3, KPW4, KPW5), Kindle Oasis (KO2, KO3), Kindle Kids Edition, Kindle Voyage.
- Other e-readers: New KoBo versions.
- Tablets and Smartphones: All e-reading applications on iPad, Android tablets, iPhone, and Android phones.

Note: If you encounter issues with page turning on your iPad or mobile phone, please disable the scrolling function within the reading application.

3.2. Stand Compatibility

The stand is suitable for all devices with screen sizes between 4.7 and 10.5 inches, including Kindles, tablets, and phones.

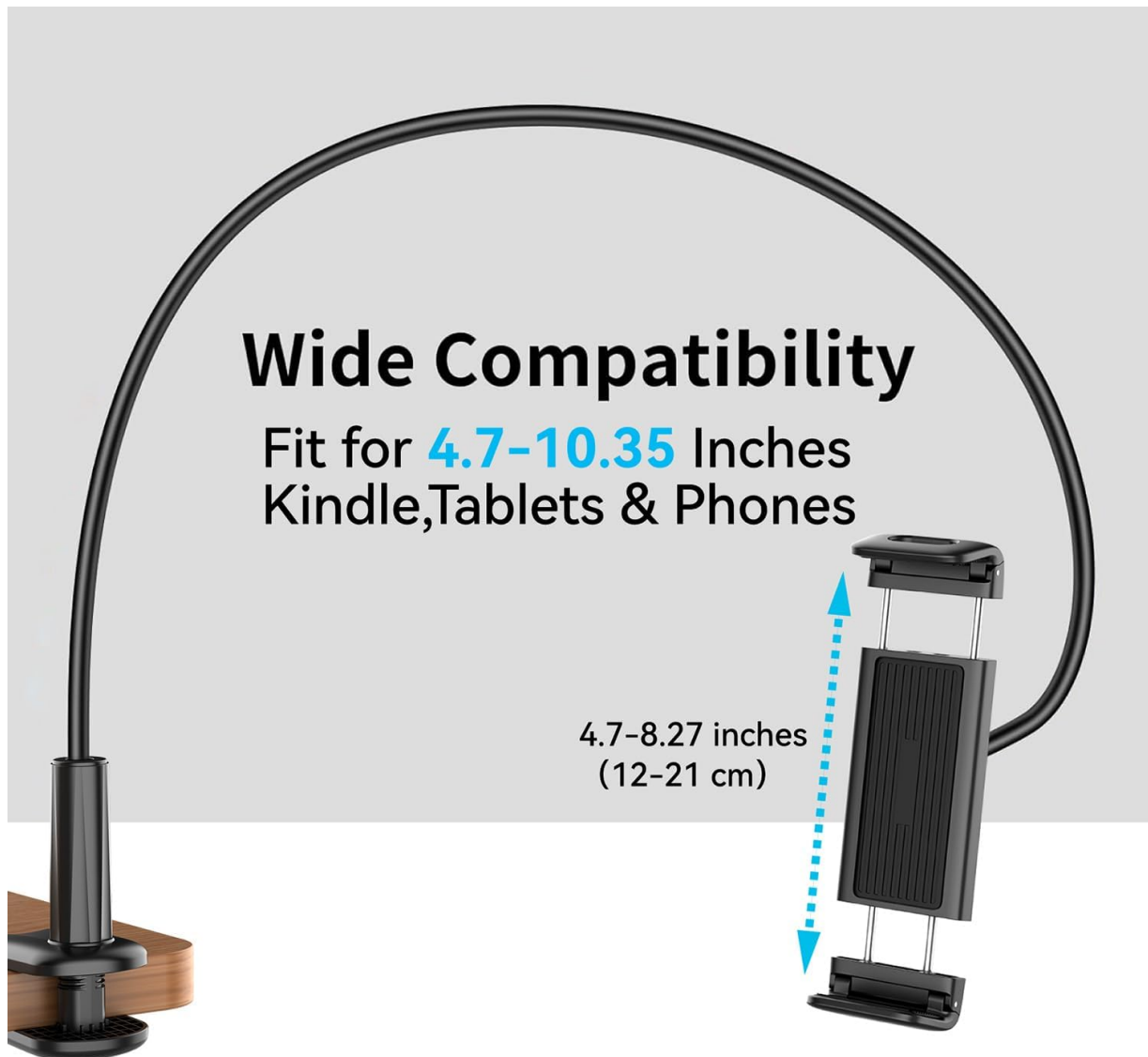


Figure 3.2.1: Diagram illustrating the wide compatibility of the stand with various device sizes.

4. SETUP INSTRUCTIONS

4.1. Assembling the Stand

The stand features a flexible arm and a clamp for attachment to surfaces like a bedside table, desk, or kitchen counter. Securely fasten the clamp to a stable surface. Insert the flexible arm into the clamp base and then attach the device holder to the top of the flexible arm. Adjust the arm and holder to your desired viewing angle.

360° Degree Rotation

You can lie in bed before going to bed or in the afternoon and enjoy your leisure time



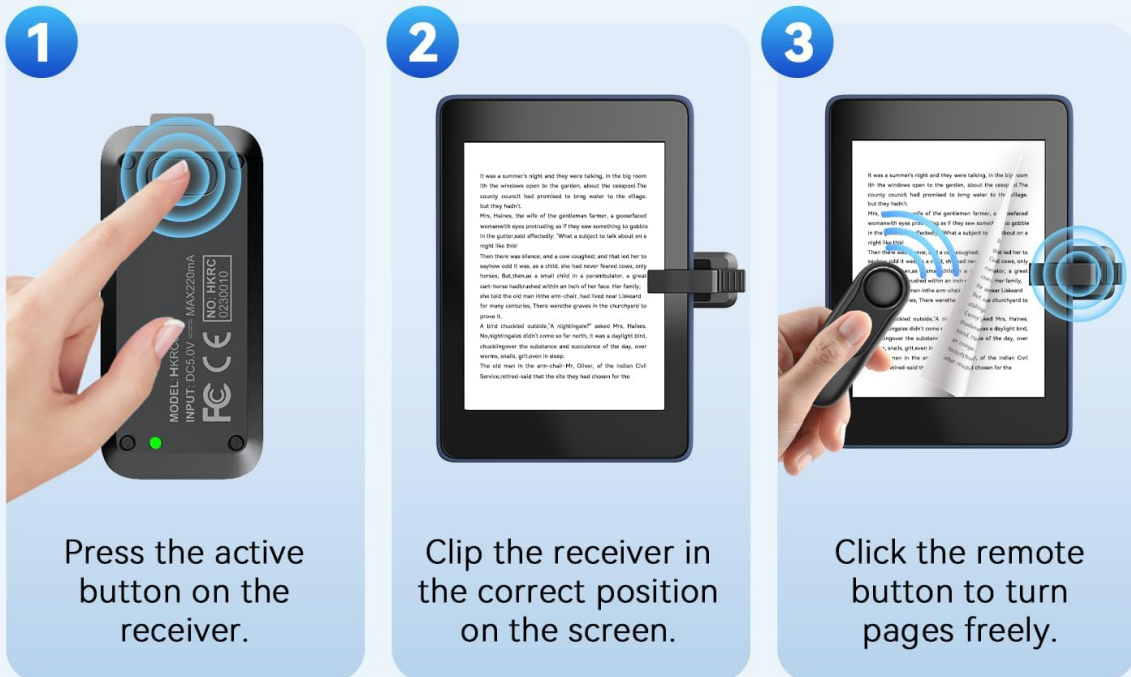
Figure 4.1.1: The adjustable stand allows for 360-degree rotation to achieve optimal reading comfort.

4.2. Preparing the Remote Page Turner

1. **Charge the Receiver and Remote:** Use the provided USB charging cable to fully charge both the remote control and the receiver. A full charge provides extended battery life.
2. **Activate the Receiver:** Press the active button on the receiver to turn it on. A small indicator light will illuminate.
3. **Attach the Receiver:** Clip the receiver onto the edge of your e-reader or tablet screen in a position that allows it to simulate a finger tap on the screen for page turning. Ensure it does not obstruct your view.
4. **Pairing (Automatic):** The remote control and receiver are pre-paired. No Bluetooth or Wi-Fi connection is required. Simply activate the receiver and it's ready for use with the remote.

Ready to use and Practical

No WiFi, No Bluetooth



Note

The two buttons of the remote control are page-turning functions to improve its service life.

Figure 4.2.1: Step-by-step guide for setting up the remote page turner.

Setup Demonstration Video

Your browser does not support the video tag.

Video 4.2.1: A demonstration of how to set up and use the Kindle page turner remote and receiver.

5. OPERATING INSTRUCTIONS

5.1. Using the Remote Control

Once the receiver is clipped to your device and active, you can use the remote control to turn pages. The remote has two page-turning buttons, designed to extend its service life. Press either button to advance to the next page in your e-book or document.

Relax Your Hands, Turn Pages Remotely



Figure 5.1.1: Enjoy hands-free reading by using the remote control to turn pages.

5.2. Power Saving Mode

The receiver features a 10-minute sleep mode to conserve energy. If the receiver enters sleep mode, simply press the activation button again to reactivate it.

Operation Demonstration Video

Your browser does not support the video tag.

Video 5.2.1: Detailed demonstration of the remote page turner's operation with various devices like Kindle, iPad, and iPhone.

6. MAINTENANCE

- Keep the device clean and dry. Avoid exposure to liquids or extreme temperatures.
- Use a soft, dry cloth for cleaning. Do not use abrasive cleaners or solvents.
- Store the remote and receiver in a safe place when not in use to prevent damage.
- Ensure the USB charging cable is handled with care to prevent damage to the connectors.

7. TROUBLESHOOTING

- **Page turner not responding:**
 - Ensure both the remote control and receiver are charged.
 - Verify the receiver is active (indicator light on).
 - Check if the receiver is correctly clipped to the screen, making proper contact for page turning.
 - If using with an iPad or mobile phone, ensure the scrolling function in the reading application is disabled.
- **Short battery life:**
 - Ensure the devices are fully charged before use.
 - The receiver has a 10-minute sleep mode; reactivate if it enters sleep mode to ensure continuous operation.
- **Stand instability:**
 - Ensure the clamp is securely tightened to a stable surface.
 - Avoid over-extending the flexible arm with heavier devices, as this may reduce stability.

8. SPECIFICATIONS

Brand	hogance
Model Number	HKRC004
Color	Black
Material	Metal
Product Type	Tablet Stand with Remote Page Turner
Special Features	Includes tablet stand and remote control for page turning
Compatible Devices (Remote)	Kindle (various models), KoBo, iPad, Tablets, iPhone, Android Phones (capacitive screens)
Compatible Devices (Stand)	Devices 4.7 to 10.5 inches (Kindle, Tablet, iPad, Smartphone, E-reader, Kobos)
Mounting Type	Table Mount
Recommended Uses	Sofa, Bed
Battery Type	Lithium-ion
Rechargeable Battery	Yes
Remote Range	Up to 30 meters

9. WARRANTY AND SUPPORT

Specific warranty information is not provided in this manual. Please refer to the product packaging or contact hogance customer support for details regarding warranty coverage and technical assistance.

For further inquiries or support, please visit the official hogance website or contact their customer service

department.