

[Manuals.plus](#) /

> [ARNSSIEN](#) /

> ARNSSIEN Y5 Digital Camera Instruction Manual

ARNSSIEN Y5

ARNSSIEN Y5 Digital Camera

INSTRUCTION MANUAL

Model: Y5 | Brand: ARNSSIEN

1. Introduction

Thank you for choosing the ARNSSIEN Y5 Digital Camera. This manual provides essential information for the safe and effective use of your camera. Please read it thoroughly before operation and keep it for future reference.

Important First Use Tip: Before initial use, fully charge the camera and format the included SD card for optimal performance. Adjust camera settings according to your environment for the best results.

2. Package Contents

Verify that all items listed below are included in your package:

- 1x ARNSSIEN Y5 Digital Camera
- 1x 32GB Memory Card
- 1x Type-C USB Cable
- 1x Card Reader
- 1x Camera Pouch
- 1x Lanyard
- 1x User Manual
- 1x Gift Box

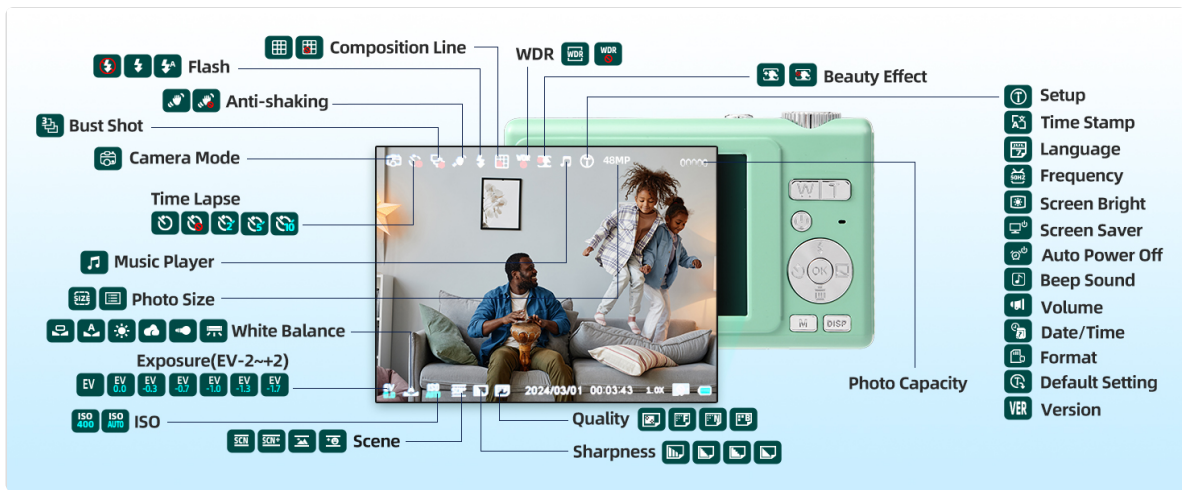


Figure 2.1: Contents of the ARNSSIEN Y5 Digital Camera package.

3. Camera Overview

Familiarize yourself with the camera's components and controls:

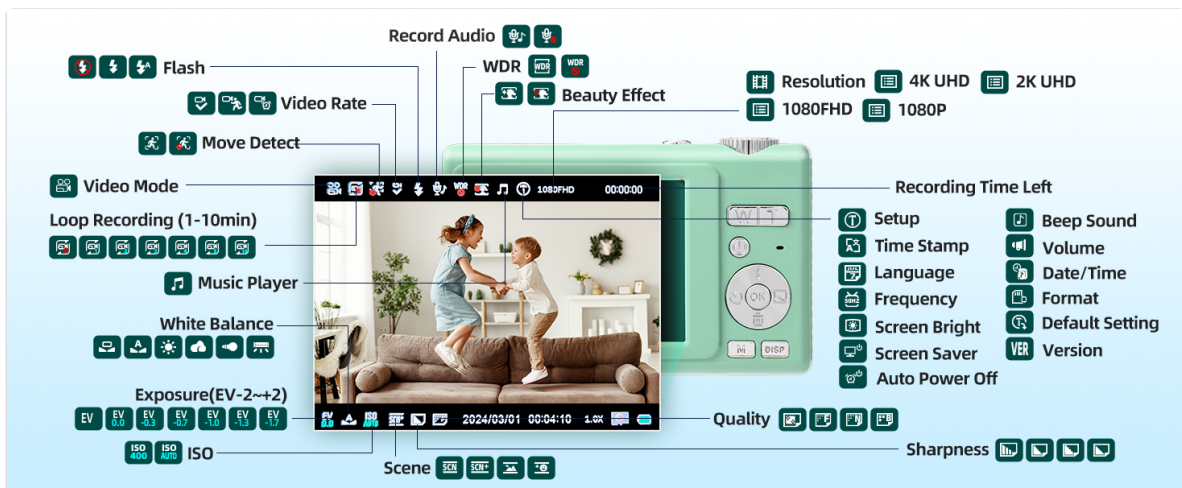


Figure 3.1: Front, top, and rear view of the ARNSSIEN Y5 Digital Camera with labeled buttons and ports.

- **Mode Rotation Key:** Adjusts camera parameters.
- **Shutter Button:** Takes photos or starts/stops video recording.
- **Flash Light:** Provides illumination in low-light conditions.
- **Charging Port (Type-C):** For charging the camera and data transfer.
- **TF Card Port:** Insert your Micro SD card here.
- **Selfie Display:** The smaller front screen for self-portraits.
- **Zoom Key:** Controls the 16X digital zoom.
- **Power Button:** Turns the camera on/off.
- **DISP Key:** Switches between the main rear screen and the front selfie screen.
- **Mode Switch:** Toggles between photo and video modes.

4. Setup

4.1 Charging the Battery

Connect the camera to a power source using the provided Type-C USB cable. The charge lamp will indicate charging status. Ensure the camera is fully charged before first use (approximately 2 hours battery life).

4.2 Inserting and Formatting the SD Card

Insert the 32GB Micro SD card into the TF Card Port until it clicks into place. For optimal performance and to prevent data corruption, it is recommended to format the SD card directly in the camera before first use and periodically thereafter. Navigate to the camera's settings menu to find the 'Format' option.

5. Operating Instructions

5.1 Power On/Off

Press and hold the **Power Button** to turn the camera on or off.

5.2 Switching Between Photo and Video Modes

Use the **Mode Switch** button to toggle between photo capture mode and video recording mode.

5.3 Using the Dual Screens

The camera features a 2.8-inch main rear screen and a 1.4-inch front selfie screen. Press the **DISP Key** to switch the active display, allowing for easy self-portraits and vlogging.



Figure 5.1: Utilizing the front selfie screen and Beautify Mode for enhanced self-portraits.

5.4 Capturing Photos and Videos

In photo mode, press the **Shutter Button** to take a 48MP photo. In video mode, press the **Shutter Button** to start recording 4K video, and press it again to stop.

5.5 Autofocus and Image Stabilization

The camera features autofocus to ensure sharp images and built-in anti-shake technology for stable photos and videos, even during movement.



Figure 5.2: Comparison of image clarity with and without autofocus/anti-shake enabled.

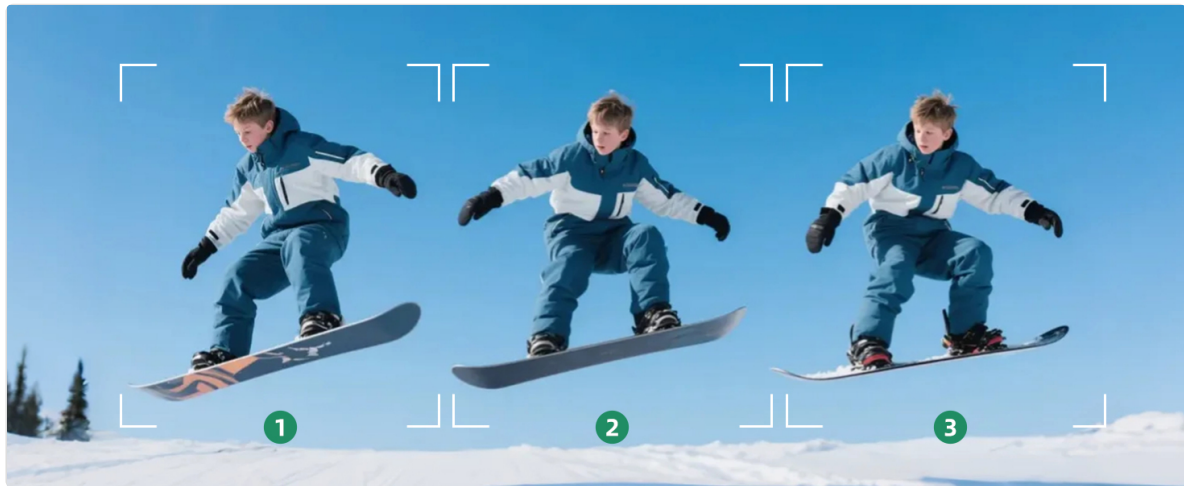


Figure 5.3: Capturing fast-moving subjects with continuous shooting and anti-shake technology.

5.6 Advanced Settings and Features

The camera offers a range of settings accessible via the menu, including:

- **ISO:** Adjusts light sensitivity.
- **EV (Exposure Value):** Controls image brightness.
- **WB (White Balance):** Corrects color tones for different lighting.
- **WDR (Wide Dynamic Range):** Enhances detail in both bright and dark areas.
- **Sharpness:** Adjusts image detail.
- **Filters:** Apply 15 creative filters to your photos.
- **Beauty Mode:** Enhances facial features in portraits.
- **Continuous Shooting:** Captures multiple photos in quick succession.
- **Slow Motion:** Records video at a slower playback speed.
- **Time-Lapse:** Captures a sequence of images over time to create a sped-up video.
- **Motion Detection:** Automatically starts recording when motion is detected.
- **Composition Assist:** Guides for better photo composition.



Figure 5.4: Enhancing image quality with WDR or exposure settings.

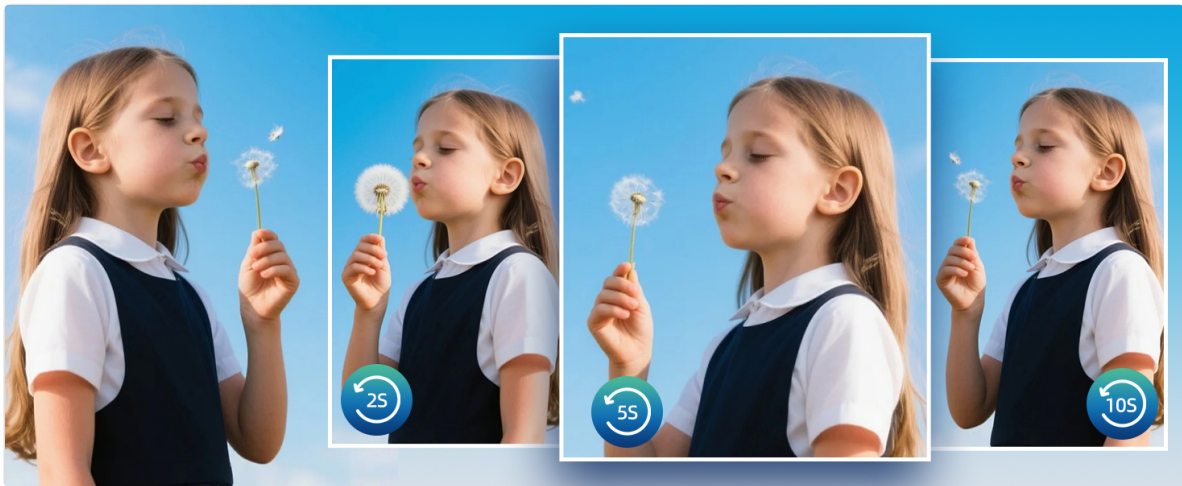


Figure 5.5: Applying various filters and adjusting white balance for creative effects.



Figure 5.6: Capturing a time-lapse sequence.

6. Connecting to a Computer

The ARNSSIEN Y5 camera offers multiple ways to connect to a computer for data transfer or use as a webcam.

6.1 USB Cable Transfer

Connect the camera to your computer using the provided Type-C USB cable. The camera will appear as a

removable disk, allowing you to transfer photos and videos directly.

6.2 SD Card Reader Transfer

Remove the SD card from the camera and insert it into the included card reader. Connect the card reader to your computer's USB port to access files.

6.3 Using as a Webcam

Connect the camera to your computer via the Type-C USB cable. Select 'Webcam Mode' on the camera (if prompted) to use it for video calls or live streaming.



Figure 6.1: Options for connecting the camera to a computer.

7. Maintenance

Proper care ensures the longevity of your camera:

- **Cleaning:** Use a soft, dry cloth to clean the camera body. For the lens and screens, use a specialized lens cleaning cloth and solution. Avoid abrasive materials.
- **Storage:** Store the camera in a cool, dry place away from direct sunlight and extreme temperatures. Use the provided camera pouch for protection.
- **Battery Care:** Avoid fully discharging the battery frequently. Charge it regularly, even if not in use, to maintain battery health.
- **Water Resistance:** This camera is **not waterproof**. Avoid exposure to water or high humidity.

8. Troubleshooting

If you encounter issues, refer to the following common solutions:

Problem	Possible Solution
Camera does not turn on	Ensure the battery is fully charged. Press and hold the power button for a few seconds.
SD card error	Reinsert the SD card. Format the SD card via the camera's settings menu. Ensure the card is not locked.

Problem	Possible Solution
Blurry images/videos	Ensure autofocus is enabled. Hold the camera steady or enable anti-shake. Clean the lens.
Cannot transfer files to computer	Check USB cable connection. Try a different USB port. Ensure the camera is in the correct USB mode (e.g., Mass Storage). Use the card reader.
Flash not working	Check flash settings in the menu (Auto, On, Off). Ensure battery is not critically low.

If the problem persists, please contact customer support.

9. Specifications

Key technical specifications for the ARNSSIEN Y5 Digital Camera:

Feature	Detail
Brand	ARNSSIEN
Model Name	Y5
Photo Sensor Resolution	48 MP
Effective Still Resolution	66 MP
Video Recording Resolution	4K (2160p)
Digital Zoom	16X
Optical Zoom	4X
Image Stabilization	Digital
Autofocus	Yes (Phase Detection)
Screen Size	2.8 inches (Main), 1.4 inches (Selfie)
Screen Type	LCD
Supported File Formats	JPEG, MP4
Memory Storage Capacity	32 GB (included SD card), supports up to 128GB
Connectivity Technology	Type-C USB
Battery Type	Lithium Polymer
Battery Capacity	800 Milliamperehour
Battery Life	Approximately 2 hours
Water Resistance Level	Not Water Resistant

10. Warranty and Support

Warranty: The ARNSSIEN Y5 Digital Camera comes with a 90-day warranty from the date of purchase. This warranty covers manufacturing defects under normal use.

Customer Support: For any questions, technical assistance, or warranty claims, please contact ARNSSIEN customer service. We offer 24/7 customer support to assist you.

Please refer to the contact information provided in your product packaging or visit the official ARNSSIEN website for support details.