

STARRYBOT ET2310-02

STARRYBOT Cordless Robotic Pool Cleaner ET2310-02 User Manual

1. INTRODUCTION

Thank you for choosing the STARRYBOT Cordless Robotic Pool Cleaner ET2310-02. This manual provides essential information for the safe operation, maintenance, and troubleshooting of your new pool cleaner. Please read this manual thoroughly before first use and retain it for future reference.

2. SAFETY INFORMATION

To ensure safe operation and prevent damage, please observe the following safety guidelines:

- Always ensure the cleaner is fully charged before use.
- Do not operate the cleaner if the water temperature is outside the recommended range (typically 50°F to 95°F / 10°C to 35°C).
- Keep children and pets away from the pool area while the cleaner is in operation.
- Do not attempt to open or repair the cleaner yourself. Contact authorized service personnel for assistance.
- Use only the original charger provided with the unit.
- Ensure the charging port is dry before connecting the charger.
- Remove the cleaner from the pool before adding chemicals or performing backwash operations.

3. PACKAGE CONTENTS

Verify that all items are present in your package:

- STARRYBOT Cordless Robotic Pool Cleaner ET2310-02
- Charging Adapter

- Retrieval Hook
- User Manual (this document)

4. PRODUCT OVERVIEW

The STARRYBOT ET2310-02 is a cordless robotic pool cleaner designed for efficient and hassle-free pool maintenance. It features advanced navigation and a powerful suction system to keep your pool sparkling clean.



Image 4.1: Front view of the STARRYBOT Cordless Robotic Pool Cleaner ET2310-02.

Key Features:

- **Cordless Operation:** Eliminates tangled cables and provides unrestricted movement.
- **Self-Parking Technology:** Automatically navigates to the pool edge when the battery is low or cleaning is complete for easy retrieval.
- **Extended Runtime:** Up to 150 minutes of cleaning on a single charge.
- **Quick Charging:** Fully recharges in approximately 120 minutes.
- **Top-Load Filter Basket:** Easy access for quick debris removal and cleaning.
- **Versatile Cleaning:** Effectively removes leaves, silt, sand grains, and algae.

CORDLESS AND POWERFUL PERFORMANCE

Effective Debris Removal for Any Pool



Leaves



Silt



Sand Grains



Algae



Image 4.2: The STARRYBOT cleaner effectively removing various types of debris from the pool floor.

Pool Compatibility:

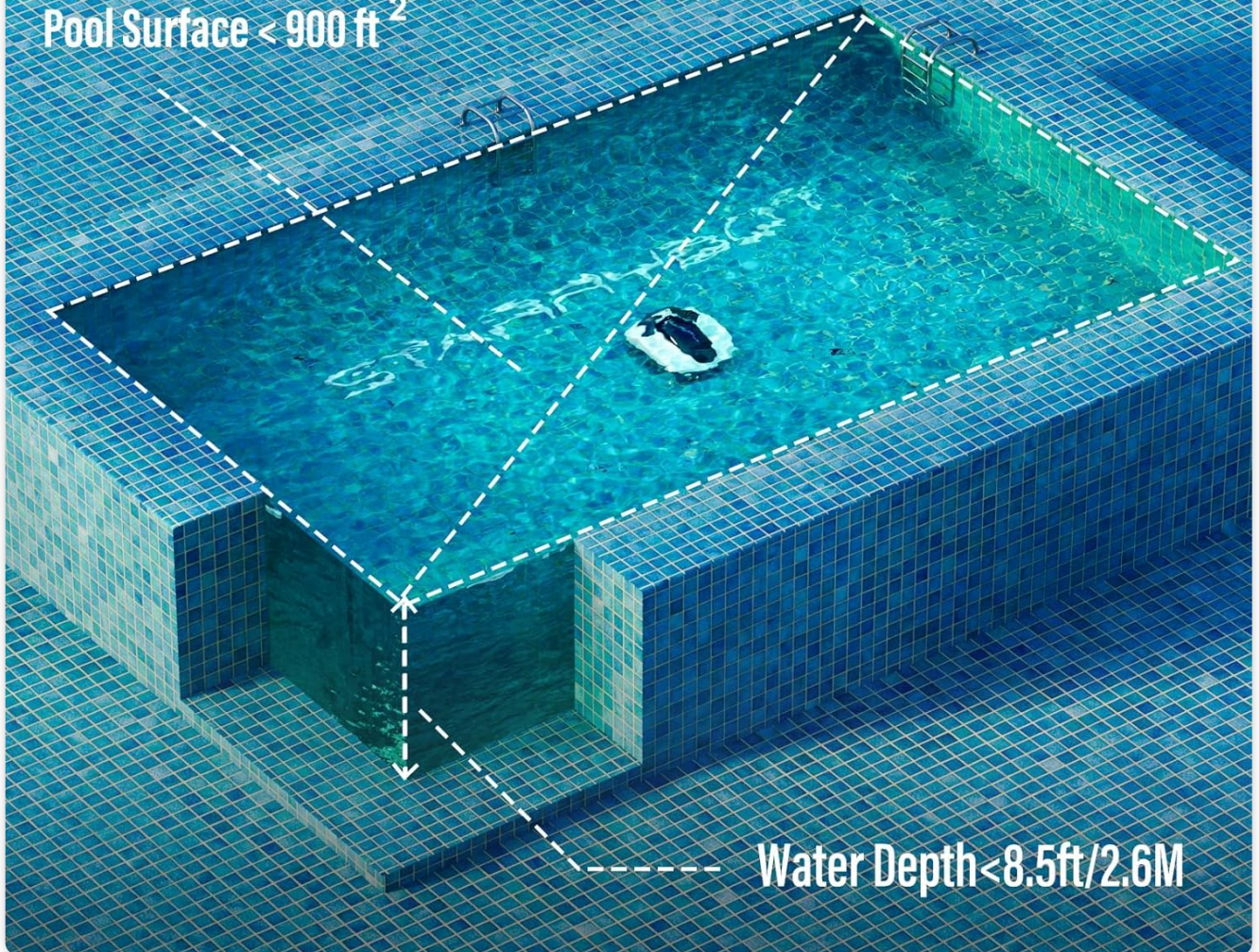
The STARRYBOT ET2310-02 is designed for:

- Pools less than 900 sq.ft.
- Flat-floored pools with a slope less than 10°.
- Above-ground pools.
- Inground flat pools.

It is **not** suitable for pools greater than 900 sq.ft, pools with a sloped floor greater than 10°, cleaning steps, or wall-climbing.

COMPREHENSIVE COVERAGE SUPPORTS ALL TYPES OF POOLS

Pool Surface < 900 ft²



Water Depth < 8.5ft/2.6M

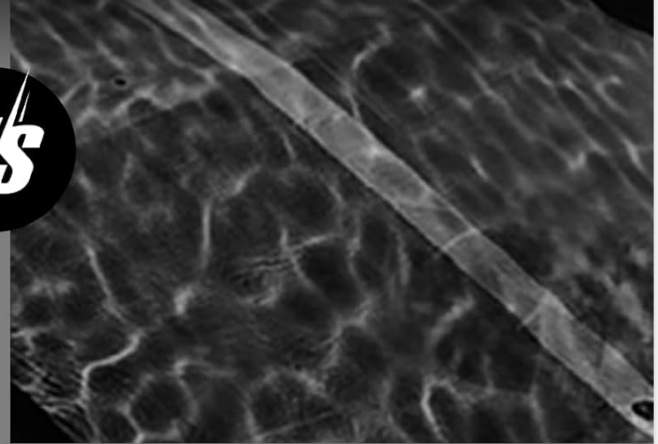
Image 4.3: Diagram illustrating the recommended pool surface area (less than 900 sq.ft) and water depth (less than 8.5ft/2.6M) for optimal cleaner performance.

POOL ROBOT SPECIFICATIONS

EFFICIENTLY CLEAN YOUR POOL WITH EASE



VS



- ✓ LESS THAN 900 SQ.FT
- ✓ <10° FLAT FLOORED POOLS
- ✓ ABOVE-GROUND POOLS
- ✓ INGROUND FLAT POOLS

- ✗ GREATER THAN 900 SQ.FT
- ✗ >10° SLOPED FLOOR
- ✗ CLEANS STEPS
- ✗ WALL-CLIMBING

Image 4.4: Visual guide detailing compatible pool characteristics (e.g., flat-floored, above-ground) versus incompatible ones (e.g., sloped floors, wall-climbing).



Image 4.5: The cleaner is suitable for various pool surfaces including mosaic, vinyl, and cement.

5. SETUP

5.1 Charging the Cleaner

1. Ensure the cleaner is dry before charging.
2. Connect the charging adapter to the cleaner's charging port.
3. Plug the adapter into a standard electrical outlet.
4. The indicator light will show charging status (refer to LED indicator section for details).
5. Allow approximately 120 minutes for a full charge.



Image 5.1: The STARRYBOT cleaner connected to its charger, indicating its 150-minute runtime.

5.2 Preparing the Pool

- Ensure the pool is free of large objects that could obstruct the cleaner.
- Check that the water level is within the recommended operating range.

6. OPERATING INSTRUCTIONS

6.1 Starting a Cleaning Cycle

1. Once fully charged, ensure the cleaner is powered on (refer to power button location).
2. Gently lower the cleaner into the pool. It will begin its cleaning cycle automatically.
3. The cleaner will navigate the pool floor, collecting debris into its filter basket.

6.2 Self-Parking Feature

The STARRYBOT ET2310-02 is equipped with smart self-parking technology. When the battery level is low or the cleaning cycle is complete, the cleaner will automatically move to the nearest edge of the pool for easy retrieval.



Image 6.1: The cleaner utilizing its self-parking feature to position itself near the pool edge for convenient retrieval.

6.3 Retrieving the Cleaner

1. Once the cleaner has self-parked or completed its cycle, use the provided retrieval hook to gently lift it from the water.

2. Allow excess water to drain from the cleaner before removing it completely from the pool.



Image 6.2: A person using the included hook to easily retrieve the STARRYBOT cleaner from the pool.

7. MAINTENANCE

7.1 Cleaning the Filter Basket

Regular cleaning of the filter basket is crucial for maintaining optimal cleaning performance.

1. After each cleaning cycle, remove the cleaner from the pool.
2. Open the top cover to access the filter basket.
3. Remove the filter basket and empty any collected debris.
4. Rinse the filter basket thoroughly with a garden hose until clean.
5. Reinsert the clean filter basket and close the top cover securely.

CORDLESS AND POWERFUL PERFORMANCE

Effective Debris Removal for Any Pool.



Image 7.1: Demonstrating the easy cleaning process of the large capacity filter basket using a hose.

7.2 Charging and Storage

- Always fully charge the cleaner before storing it for an extended period.
- Store the cleaner in a cool, dry place, away from direct sunlight and extreme temperatures.
- Periodically charge the unit during long storage periods (e.g., every 3 months) to maintain battery health.

8. TROUBLESHOOTING

If you encounter issues with your STARRYBOT pool cleaner, refer to the table below for common problems and solutions.

Problem	Possible Cause	Solution
Cleaner does not start	Low battery; Power button not pressed; Obstruction	Charge the cleaner fully; Ensure power button is pressed; Check for debris blocking wheels/intake.
Poor cleaning performance	Full or dirty filter basket; Low battery; Incorrect pool type	Clean the filter basket; Charge the cleaner; Verify pool compatibility (refer to Section 4).
Cleaner gets stuck	Large debris; Uneven pool surface; Steps/obstacles	Remove large debris from pool; Ensure pool is flat-floored; Remove cleaner from pool and restart in a clear area.
Cleaner does not self-park	Battery completely depleted; Sensor obstruction	Manually retrieve the cleaner and charge it; Clean any debris from sensors.
Charging indicator not working	Charger not connected properly; Faulty charger/unit	Ensure secure connection; Contact customer support if issue persists.

9. SPECIFICATIONS

Feature	Specification
Model Number	ET2310-02

Feature	Specification
Brand	STARRYBOT
Power Source	Battery Powered
Battery Type	Lithium Ion (1 included)
Battery Energy Content	2000 Watt Hours
Runtime	Up to 150 minutes
Charging Time	Approx. 120 minutes
Product Dimensions (L x W x H)	12" x 7.8" x 16" (30.5cm x 19.8cm x 40.6cm)
Item Weight	13.22 pounds (6 kg)
Max Pool Surface Area	900 sq.ft.
Max Water Depth	8.5 ft (2.6 m)
Assembly Required	No

10. WARRANTY AND SUPPORT

The STARRYBOT Cordless Robotic Pool Cleaner ET2310-02 comes with a standard manufacturer's warranty. For specific warranty details, please refer to the warranty card included in your product packaging or contact STARRYBOT customer support.

Customer Support:

If you have any questions, require technical assistance, or need to report an issue, please contact STARRYBOT customer support through the retailer's platform or the official STARRYBOT website.