



Manuals.plus /

› Slikwave /

› Slikwave 850W HVLP Paint Sprayer Instruction Manual (Model CN7000)

Slikwave CN7000

Slikwave 850W HVLP Paint Sprayer Instruction Manual

Model: CN7000

1. INTRODUCTION

This manual provides detailed instructions for the safe and effective operation, maintenance, and troubleshooting of your Slikwave 850W HVLP Paint Sprayer, Model CN7000. This electric paint sprayer is designed for applying various coatings, including solvent-based and water-based paints, oils, stains, varnishes, and wood preservatives. It is suitable for projects such as painting fences, sheds, walls, and garden furniture.

2. SAFETY INFORMATION

Always observe basic safety precautions when using electrical appliances to reduce the risk of fire, electric shock, and personal injury. Read all instructions carefully before operation.

- Wear appropriate personal protective equipment (PPE), including safety glasses, gloves, and a respirator, especially when spraying paints or chemicals.
- Ensure the work area is well-ventilated to prevent the accumulation of hazardous fumes.
- Keep children and bystanders away from the operating area.
- Do not operate the sprayer near open flames, pilot lights, or other ignition sources.
- Always disconnect the power supply before cleaning, adjusting, or performing maintenance on the sprayer.
- Do not immerse the motor unit in water or other liquids.
- Use only manufacturer-recommended accessories and replacement parts.
- Ensure the paint being used is compatible with the sprayer and follow the paint manufacturer's safety guidelines.

3. PACKAGE CONTENTS

Verify that all items listed below are present in your package:

- 1x Slikwave Paint Sprayer (Model CN7000)
- 4x Nozzles (0.8mm, 1.2mm, 1.8mm, 2.5mm)
- 2x Paint Filters

- 1x Viscosity Cup
- 1x Nozzle Cleaning Needle
- 1x Cleaning Brush
- 1x User Manual



Image 1: Slikwave 850W HVLP Paint Sprayer with all included accessories.

4. PRODUCT OVERVIEW

The Slikwave CN7000 paint sprayer features an 850W motor designed for efficient paint atomization. It includes a 1400ml detachable container, multiple nozzle sizes, and adjustable spray patterns for various applications.

Key Features:

- **850W Motor:** Provides consistent power for smooth and even paint application.
- **1400ml Container:** Large capacity reduces the frequency of refills during projects.

- **Adjustable Nozzles:** Four nozzle sizes (0.8mm, 1.2mm, 1.8mm, 2.5mm) allow for different paint viscosities and project requirements.
- **Multiple Spray Patterns:** Offers circular, horizontal, and vertical spray patterns for versatile coverage.
- **Flow Control:** Adjustable material flow for precise application.
- **Detachable Design:** Components are designed for easy disassembly and cleaning.

850W SUPER POWER SYSTEM

Easy And Quick Installation Of Paint Sprayer



3 modes &
4 nozzles



1400ml
capacity



Flexible flow
control



Easy to
clean

Hide handle



Image 2: Diagram showing the 850W motor and key components of the sprayer.



Image 3: Exploded view of the sprayer components for assembly and maintenance reference.

5. SETUP

5.1 Paint Preparation and Viscosity Test

Proper paint preparation is crucial for optimal spraying results. Most paints require thinning before use. Use the included viscosity cup to test the paint's consistency.

1. Stir the paint thoroughly.
2. Fill the viscosity cup with paint.
3. Measure the time it takes for the paint to completely drain from the cup. Refer to the paint manufacturer's recommendations for ideal viscosity. The maximum spray viscosity for this unit is 120 din-s.
4. If the paint is too thick, thin it with the appropriate thinner (not water, unless specified by the paint manufacturer) and re-test until the desired viscosity is achieved.
5. Use the included paint filters to remove any impurities from the paint before pouring it into the container.

MAX. SPRAY VISCOSITY
120din-S

Suitable for a wide range of wood, Wall and metal paints as well as Anti-Corrosion Coatings


 Please note! When you are preparing to thin paint, always thin it with thinner, not with water!



Image 4: Guide to paint viscosity testing and thinning.

5.2 Assembly

1. Ensure the sprayer is unplugged from the power source.

2. Attach the paint container to the spray gun body by twisting it securely until it clicks into place.
3. Select the appropriate nozzle size for your paint and project. The 0.8mm nozzle is suitable for thin materials (10-20 Din-s), 1.2mm for medium (30-40 Din-s), 1.8mm for thicker materials (50-70 Din-s), and 2.5mm for very thick materials (80-120 Din-s).
4. Insert the chosen nozzle into the nozzle cap and secure it onto the spray gun.
5. Adjust the suction tube (straw) inside the paint container. For spraying downwards, point the end of the suction tube towards the front of the gun. For spraying upwards or overhead, point the end of the suction tube towards the back of the gun. This helps minimize paint refills.

4 NOZZLES SIZES AND RECOMMENDATION

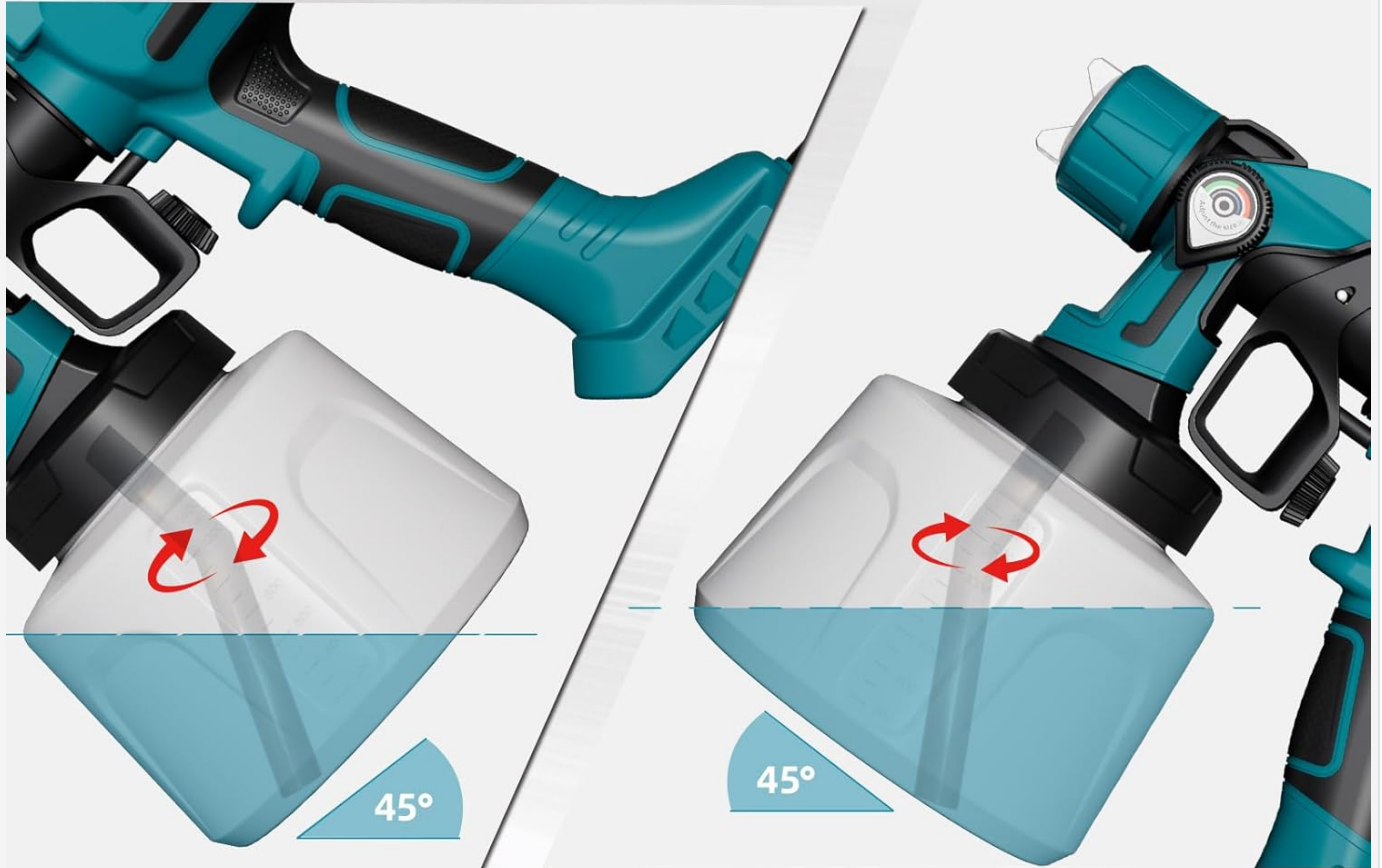


<p>0.8 mm</p>  <p>10-20DINS</p> <p>For Wooden Artwork,DIY.....</p>	<p>1.5 mm</p>  <p>30-40DINS</p> <p>For Chair,Shutter,Cabinets.....</p>
<p>1.8 mm</p>  <p>50-70DINS</p> <p>For Railings ,Window Frames.....</p>	<p>2.5 mm</p>  <p>80-120DINS</p> <p>For Walls,Decks,Fences...FOR Wooden Artwork,DIY...</p>

Image 5: Nozzle size recommendations for various paint viscosities and applications.

ADJUSTABLE SUCTION TUBE

Spray To The Underlying Objects
--Turn The Suction Pipe Forwards



Spray To The Overhead Objects
--Turn The Suction Pipe Backwards

Image 6: Adjusting the suction tube for different spraying angles.

6. OPERATING INSTRUCTIONS

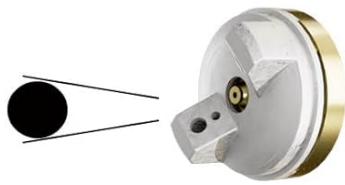
6.1 Adjusting Spray Patterns

The sprayer offers three adjustable spray patterns:

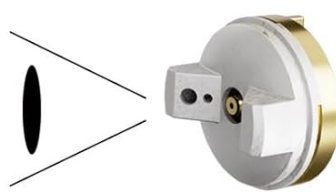
- **Circular (45°):** Ideal for small areas, corners, and edges.
- **Horizontal (90°):** Suitable for vertical surfaces, providing a wide horizontal spray.
- **Vertical (180°):** Suitable for horizontal surfaces, providing a wide vertical spray.

Rotate the air cap ears to change between horizontal and vertical patterns. For a circular pattern, align the air cap ears diagonally.

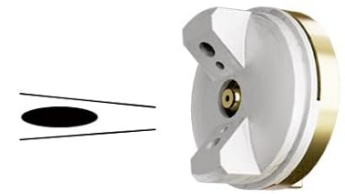
3 SPRAY PATTERNS



Circular 45°



Horizontal 90°



Vertical 180°

ADJUSTABLE FLOW CONTROL

▶ 0 ml/min



▶ 1000 ml/min



Image 7: Spray pattern adjustment and flow control dial.

CIRCULAR 45°

suitable for corners, edges and others



VERTICAL 90°

suitable for horizontal surface



HORIZONTAL 180°

suitable for vertical surface



Image 8: Detailed illustration of circular, vertical, and horizontal spray patterns.

6.2 Adjusting Material Flow

The material flow can be adjusted using the flow control knob located on the trigger. Turn the knob to increase or decrease the paint output. Always test the spray pattern and flow on a scrap piece of material before applying to your project surface.

6.3 Spraying Technique

- Hold the sprayer approximately 6-12 inches (15-30 cm) from the surface, depending on the desired coverage and paint type.
- Move the sprayer in smooth, even strokes, overlapping each pass by about 50%.
- Maintain a consistent speed and distance from the surface to ensure an even finish.
- Release the trigger at the end of each stroke to avoid paint buildup.

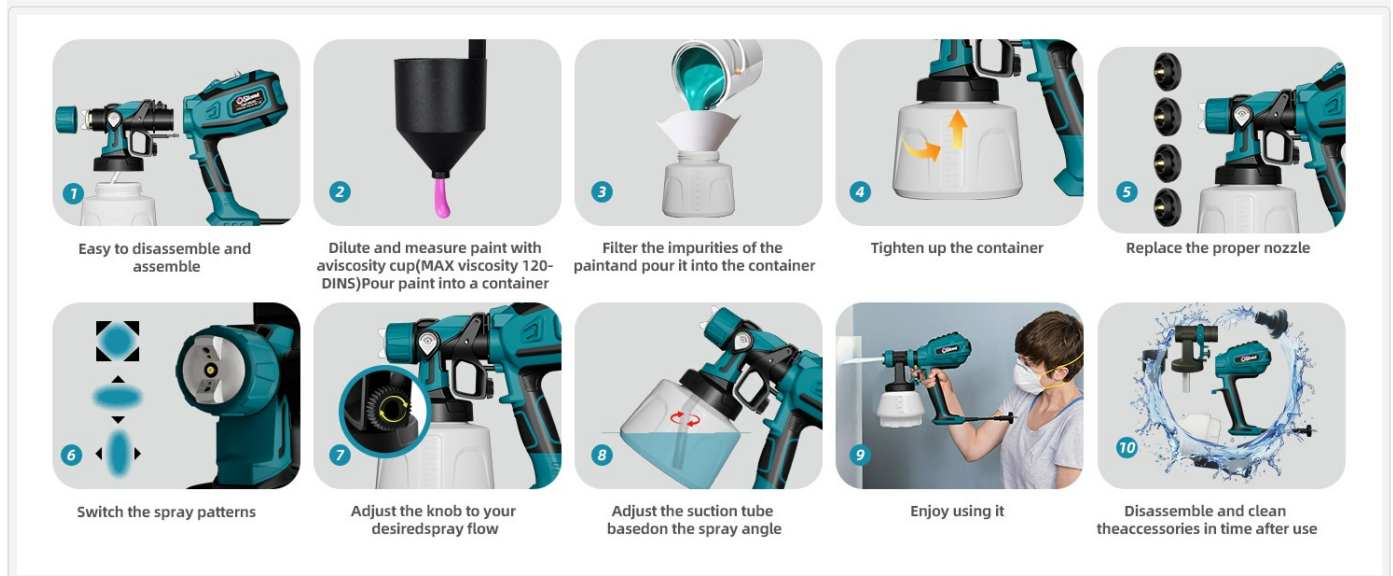


Image 9: Step-by-step visual guide for using the paint sprayer.



Image 10: Examples of common applications for the paint sprayer.

7. MAINTENANCE

Thorough cleaning after each use is essential to maintain the sprayer's performance and extend its lifespan.

7.1 Cleaning Procedure

1. **Disconnect Power:** Always unplug the sprayer from the power outlet before cleaning.
2. **Empty Container:** Empty any remaining paint from the container back into its original can.
3. **Disassemble:** Detach the paint container, nozzle, and air cap assembly from the motor unit.
4. **Clean Components:** Wash all disassembled parts (container, suction tube, nozzle, air cap) with the appropriate cleaning solution for the type of paint used (e.g., water for water-based paints, mineral spirits for oil-based paints).
5. **Use Cleaning Tools:** Use the included cleaning brush to scrub the container and other parts. Use the cleaning needle to clear any blockages in the nozzle and air cap holes.
6. **Rinse and Dry:** Rinse all parts thoroughly with clean water and allow them to dry completely before reassembly or

storage.

7. **Wipe Motor Unit:** Wipe the exterior of the motor unit with a damp cloth. Do not immerse the motor unit in liquid.

EASY TO DISASSEMBLE AND CLEAN



Tips: Completely Clean The Accessories After Each Use



Image 11: Visual guide for disassembling and cleaning the sprayer.

8. TROUBLESHOOTING

Refer to the table below for common issues and their solutions.

Problem	Possible Cause	Solution
No spray or weak spray	Nozzle clogged Paint too thick Suction tube blocked or incorrectly positioned Container not sealed properly	Clean nozzle with cleaning needle Thin paint to correct viscosity Check and adjust suction tube Ensure container is tightly sealed
Uneven spray pattern	Nozzle partially clogged Air cap dirty or damaged Incorrect spray pattern setting	Clean nozzle and air cap Check air cap for damage Adjust air cap to desired pattern
Paint drips or runs	Paint too thin Spraying too close to surface Too much material flow	Thicken paint or use smaller nozzle Increase distance from surface Reduce material flow with knob
Sprayer not turning on	No power supply Power cord damaged	Check power connection and outlet Inspect power cord for damage; do not use if damaged

9. SPECIFICATIONS

Feature	Detail
Brand	Slikwave
Model Name	Electric Paint Sprayer (CN7000)
Power Source	AC
Motor Power	850W
Tank Volume	1400 Milliliters
Nozzle Sizes	0.8mm, 1.2mm, 1.8mm, 2.5mm
Max Spray Viscosity	120 din-s
Material	Brass, Copper, Plastic
Product Dimensions	5.7"W x 9.6"H
Item Weight	3.65 pounds
UPC	772864443957

10. WARRANTY AND SUPPORT

For any questions or assistance with your Slikwave paint sprayer, please contact Slikwave customer support. Support is typically available within 18 hours.

Specific warranty details are not provided in this manual. Please refer to your purchase documentation or contact Slikwave customer service for warranty information.

