

[Manuals.plus](#) /

> [cotsoco](#) /

> cotsoco M802 Cellulite Massager Body Sculpting Machine User Manual

## cotsoco M802

# cotsoco M802 Cellulite Massager Body Sculpting Machine User Manual

Model: M802

## INTRODUCTION AND PRODUCT OVERVIEW

The cotsoco M802 Cellulite Massager Body Sculpting Machine is a versatile handheld device designed to provide a comfortable massage experience and support your personal care routine. This device features advanced constant temperature technology, multiple massage modes, and intensity levels for full-body use. It is intended to help relax the body and improve the overall appearance of the skin. Please note, this product is not a medical device and is not intended for medical use.

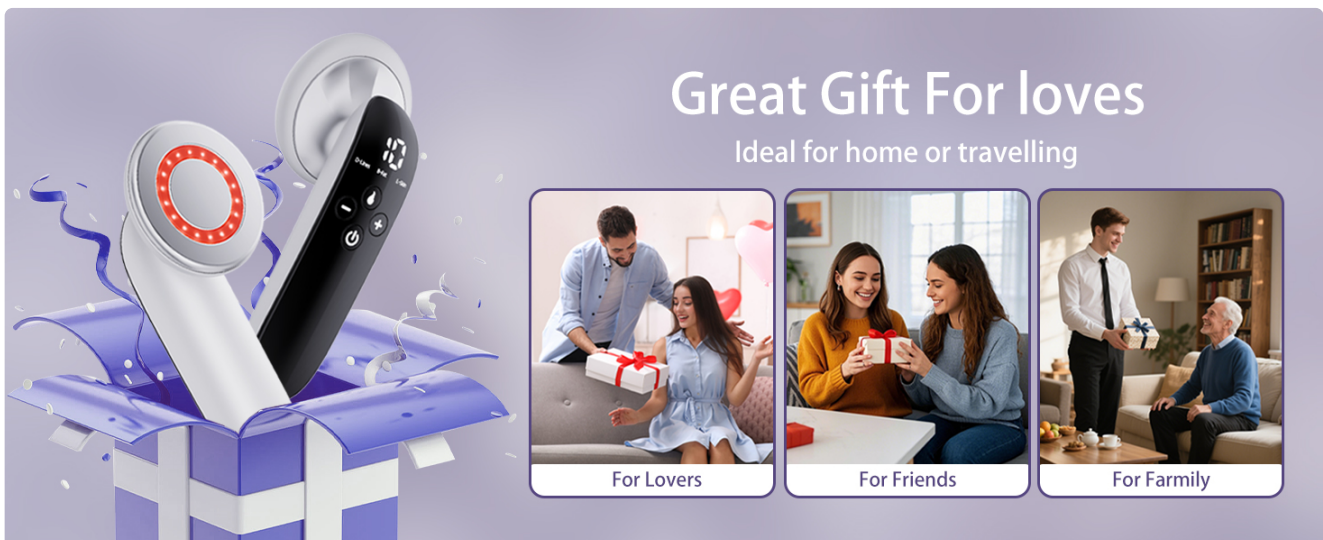


Image: Multifunctional Body Massager with key features highlighted.

### Key Features:

- **Versatile Application:** Can be used on various body areas including belly, waist, legs, buttocks, and arms. Not for facial use.
- **Advanced Constant Temperature:** Maintains a soothing temperature between 37°C to 42°C (98.6°F-107.6°F) for comfort and enhanced massage effect.

- **Multiple Modes & Intensity Levels:** Equipped with 3 massage modes and 10 intensity levels for customizable treatment.
- **Cordless Design:** Ensures ease of handling and portability for use anywhere.
- **LED Display:** Smart LED display for easy selection of mode and intensity.
- **Safety Auto-Off:** Automatically powers off after 15 minutes of continuous use for safety and energy conservation.
- **Supports Skin Smoothness:** Aids in relaxing the body and improving skin appearance when used with a gel or serum.

## SETUP

Before first use, ensure the device is fully charged. Locate the charging port on the bottom of the device and connect it to a suitable power source using the provided charging cable.

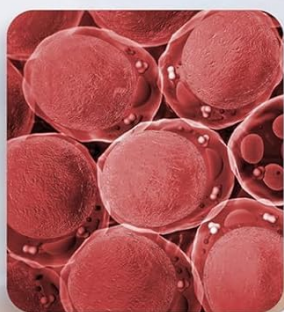
# 4 Technology Modes



**D-Lines-Dispel Lines**  
Stimulates skin to become firmer, and reduce stretch marks.



**B-Fat-Burn Fat**  
Converts electrical energy into heat energy to help burn fat.



**L-Skin-Lift Skin**  
Electric waves stimulate the regeneration of collagen in the deep layers of the skin.



**Constant Temperature**  
Increases the temperature and improves the effect of other technologies.



Image: The cotsoco M802 device, highlighting the control panel and charging port.

## Preparation for Use:

1. **Charge the Device:** Connect the device to its charger. The LED display may indicate charging status.
2. **Prepare Skin:** For optimal results and comfort, apply a conductive gel, massage oil, or serum to the target body area before use. This product does not include these items.

## OPERATING INSTRUCTIONS

Follow these steps for effective use of your cotsoco M802 Body Sculpting Machine:

1. **Power On:** Press and hold the power button ( ) to turn the device on or off.
2. **Select Mode:** Short press the power button to cycle through the three available modes: D-Lines (Dispel Lines), B-Fat (Burn Fat), and L-Skin (Lift Skin). The selected mode will be indicated on the LED display.
3. **Adjust Intensity:** Use the '+' and '-' buttons to select your desired intensity level, from 1 to 10. It is recommended to start from Level 1 and gradually increase as your body adapts.
4. **Activate Heating Function:** Press the heating switch button (water drop icon) to activate the constant temperature feature. The device will maintain a temperature between 37°C to 42°C.
5. **Application:** Place the electrode patch of the device firmly against the prepared skin area. Gently move the device back and forth repeatedly over the target area.
6. **Session Duration:** Use the device for up to 15 minutes per session. The device will automatically power off after 15 minutes for safety. To continue use, simply restart manually.



Image: Step-by-step guide on how to operate the device.

## Important Notes During Operation:

- Skin may feel like hair is being pulled while the device is working.
- Some sensitive skin may even experience a slight bee sting sensation. These are normal.
- Do not use on broken skin or facial area.

Your browser does not support the video tag.

Video: An official product video demonstrating the cotsoco Body Sculpting Machine's features and modes, including Dispel Lines, Burn Fat, and Lift Skin modes, and showing its application on the body.

## MODES AND THEIR FUNCTIONS

The cotsoco M802 offers three distinct modes to target different skin and body concerns:

- **D-Lines (Dispel Lines Mode):** Stimulates skin to become firmer and helps reduce the appearance of stretch marks. This mode utilizes 200Hz Bio-Wave and 630(±10)nm red light.
- **B-Fat (Burn Fat Mode):** Converts electrical energy into heat energy to assist in fat reduction. This mode uses 30Hz Bio-Wave, 1MHz RF, and 630(±10)nm red light.
- **L-Skin (Lift Skin Mode):** Electric waves stimulate the regeneration of collagen in the deep layers of the skin, promoting skin lifting and toning.



Image: Overview of the four technology modes and their functions.

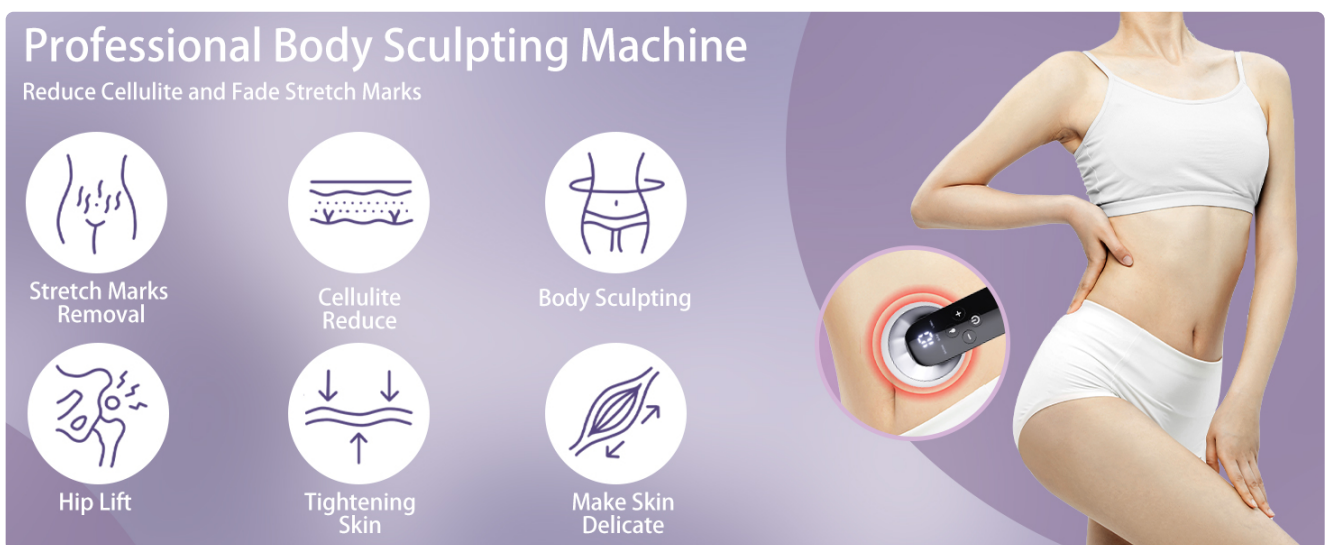


Image: Visual representation of the body benefits from using the device.

Your browser does not support the video tag.

Video: An official product video demonstrating the cotsocho Cellulite Massager, showcasing its application and the visual effects of its different modes on skin.

## MAINTENANCE

Proper maintenance ensures the longevity and optimal performance of your cotsocho M802 Body Sculpting Machine.

- **Cleaning:** After each use, gently wipe the electrode patch and the device body with a soft, damp cloth. Do not use abrasive cleaners or immerse the device in water.

- **Storage:** Store the device in a cool, dry place, away from direct sunlight and extreme temperatures. Use the provided carry bag for protection when not in use or when traveling.
- **Charging:** Charge the device regularly to maintain battery health, even if not used frequently. Avoid overcharging.

## TROUBLESHOOTING

If you encounter any issues with your cotsoco M802, please refer to the following common solutions:

Problem	Possible Cause	Solution
Device does not turn on	Low battery or not charged	Charge the device fully using the provided cable.
No sensation or weak effect	Incorrect mode/intensity or dry skin	Increase intensity level. Ensure skin is moisturized with gel/serum. Check mode selection.
Device automatically turns off	15-minute auto-off feature activated	This is normal. Restart the device manually to continue your session.
Skin irritation	Device used on broken skin or without proper lubrication	Discontinue use immediately. Ensure skin is healthy and well-lubricated before use. Consult a healthcare professional if irritation persists.

If the problem persists after trying these solutions, please contact customer support.

## SPECIFICATIONS

Feature	Detail
Model Number	M802
Product Dimensions	2 x 1.8 x 5.8 inches
Item Weight	13.12 ounces (0.37 Kilograms)
Color	White
Material Type	Plastic
Power Source	Battery Powered
Cordless	Yes
Massager Form	Hand Massager
Product Benefits	Relaxation, Skin Tightening, Stretch Mark Reduction

Feature	Detail
Massage Therapy Technique	Kneading, Percussion, Rolling (as per general massager type, though specific modes are different)
Temperature Range	37°C to 42°C (98.6°F-107.6°F)
Auto-Off Timer	15 minutes

## WARRANTY AND SUPPORT

---

cotsoco is committed to providing quality products and customer satisfaction.

- **Warranty:** The product comes with a 1-year warranty.
- **Customer Support:** We offer 24-hour customer support to assist you with any questions or concerns.
- **Returns:** Please refer to your purchase platform's return policy for details on returns and exchanges.

For further assistance, please contact cotsoco customer service through the platform where you purchased the product.