

Manuals+

[Q & A](#) | [Deep Search](#) | [Upload](#)

manuals.plus /

› [Romorgniz](#) /

› [Romorgniz 16-Drawer Fabric Dresser with Charging Station and TV Stand \(Model B0FCFS4JRH\) - Instruction Manual](#)

Romorgniz B0FCFS4JRH

Romorgniz 16-Drawer Fabric Dresser with Charging Station and TV Stand

Model: B0FCFS4JRH | Brand: Romorgniz

1. IMPORTANT SAFETY INFORMATION

Please read and understand all instructions before assembly and use. Keep this manual for future reference.

- **Anti-Tipping Kit:** Always install the included anti-tipping kit to prevent serious injury from furniture tip-over. Securely fasten the dresser to a wall stud.
- **Weight Limits:** Do not exceed the recommended weight limits for the top surface or individual drawers. Overloading can cause instability and damage.
- **Placement:** Place the dresser on a level surface. Use the adjustable feet to ensure stability and prevent wobbling.
- **Electrical Safety:** When using the built-in charging station, ensure all devices are compatible with the power specifications (3 AC outlets, 2 USB ports). Do not overload the outlets. Keep liquids away from electrical components.
- **Children Safety:** Keep children away from the assembly area. Do not allow children to climb on or play with the dresser.



Single-unit Storage — No Gaps ✓

Multiple Pieces — Messy Gaps ✗



Image: Sturdy Construction & Safety Features. This image highlights the strengthening tendons, anti-tipping kit, and adjustable feet for enhanced stability and safety.

2. PRODUCT OVERVIEW

The Romorgniz 16-Drawer Fabric Dresser is a versatile storage solution designed for bedrooms, living rooms, and other areas. It combines a sturdy metal frame with a durable wooden top and spacious fabric drawers, offering both functionality and a modern aesthetic.

- **Dimensions:** 11.9"D x 51"W x 34.7"H
- **Drawer Count:** 16 fabric drawers in various sizes for organized storage.
- **Material:** Metal frame, solid wooden top, and high-quality fabric drawers.
- **Integrated Charging Station:** Features 3 standard AC plug outlets and 2 USB ports for convenient device charging.
- **TV Stand Functionality:** Designed to accommodate TVs up to 61 inches.
- **Stability:** Equipped with adjustable feet for stability on uneven surfaces and an anti-tipping kit for safety.

Product Size

370
LBS



Image: Product Size and Drawer Dimensions. This image illustrates the overall dimensions of the dresser and the varying sizes of its 16 fabric drawers.

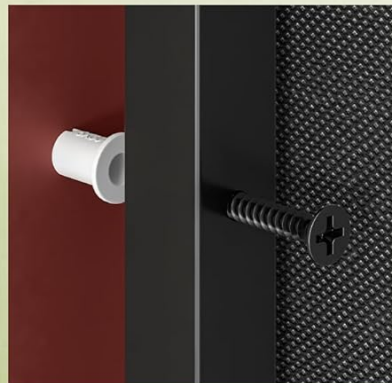
Non-woven Fabric

MDF Board

Non-woven Fabric



*Strengthening
Tendons*



*Anti-tipping
Kit*



*Adjustable
Feet*

Image: Desktop with Power Outlet. This image details the integrated charging station on the dresser's top surface, providing 3 AC outlets and 2 USB ports for electronic devices.

3. SETUP & ASSEMBLY

Assembly of the Romorgniz dresser is designed to be straightforward. All necessary tools and clear step-by-step instructions are included in the package. Please follow the provided manual carefully.

Assembly Video Guide:

For a visual guide on assembling your 16-drawer dresser, please refer to the official seller video below. This video demonstrates the assembly process, including frame construction and drawer installation.

Your browser does not support the video tag.

Video: Assembly Guide for Romorgniz 16-Drawer Dresser. This video provides a detailed visual walkthrough of the assembly process for the Romorgniz 16-drawer fabric dresser.

Key Assembly Steps:

1. Unpack all components and verify against the parts list in your included manual.
2. Assemble the metal frame structure according to the diagrams. Ensure all screws are tightened securely.
3. Attach the wooden top panel to the assembled frame.
4. Prepare the fabric drawers by inserting the bottom panels and attaching handles.
5. Insert the assembled fabric drawers into their designated slots in the frame.
6. Install the anti-tipping kit to a wall stud to prevent accidental tip-over.
7. Adjust the leveling feet at the bottom of the dresser to ensure it stands stable and level on your floor.

4. OPERATING INSTRUCTIONS

Using the Fabric Drawers:

- The fabric drawers are designed for smooth operation. Pull gently on the handles to open and push to close.
- Distribute weight evenly within the drawers to maintain their shape and functionality.
- Avoid placing excessively heavy or sharp objects in the drawers to prevent damage to the fabric.



Image: Ample Storage Space. This image displays the dresser with several drawers pulled open, demonstrating the significant storage capacity for organizing clothes, accessories, and other household items.

Using the Charging Station:

- Plug the dresser's power cord into a standard wall outlet.
- Connect your devices to the 3 AC outlets or 2 USB ports located on the top surface.
- Ensure devices are compatible with the charging station's power output.

Using as a TV Stand:

- The sturdy wooden top is designed to support TVs up to 61 inches.
- Place the TV centrally on the dresser top to ensure stability.
- Utilize the charging station for powering your TV or media devices.



Image: Dresser as a TV Stand. This image shows the dresser functioning as a TV stand, supporting a large television and blending seamlessly into a living room environment.

5. MAINTENANCE & CARE

- **Cleaning:** Wipe the wooden top and metal frame with a soft, damp cloth. For fabric drawers, spot clean with a mild detergent and allow to air dry. Do not machine wash.
- **Avoid Harsh Chemicals:** Do not use abrasive cleaners or harsh chemicals on any part of the dresser.
- **Regular Checks:** Periodically check all screws and connections to ensure they remain tight. Re-tighten if necessary.
- **Sunlight Exposure:** Avoid prolonged direct sunlight exposure to prevent fading of the fabric drawers and wooden top.

6. TROUBLESHOOTING

- **Dresser is Wobbly:**

- Ensure the dresser is on a flat, level surface.
- Adjust the leveling feet at the bottom of the frame until stability is achieved.
- Check all assembly screws and tighten any loose connections.

- **Drawers Not Sliding Smoothly:**

- Ensure the fabric drawers are correctly assembled with the bottom panel fully inserted.
- Verify that no items are obstructing the drawer's movement within the frame.
- Check if the frame itself is level and not warped.

- **Charging Station Not Working:**

- Confirm the dresser's main power cord is securely plugged into a functional wall outlet.
- Test the wall outlet with another device to ensure it has power.
- Ensure your device's charging cable is properly connected to the USB port or AC outlet.
- Avoid overloading the charging station with too many high-power devices simultaneously.

If you encounter issues not covered here, please contact Romorgniz customer support for assistance.

7. SPECIFICATIONS

Brand	Romorgniz
Model	B0FCFS4JRH
Product Dimensions	11.9"D x 51"W x 34.7"H
Number of Drawers	16
Material	Metal (frame), Wood (top), Fabric (drawers)
Color	Black
Charging Station	3 AC Outlets, 2 USB Ports
TV Size Compatibility	Up to 61 inches
Assembly Required	Yes

8. WARRANTY & SUPPORT

For warranty information or technical support, please refer to the documentation included with your purchase or visit the official Romorgniz website. You may also contact customer service via the platform where the product was purchased.

Please have your model number (B0FCFS4JRH) and purchase date ready when contacting support.

