



[Manuals.plus](#) /

> [JUMMICO](#) /

> JUMMICO 73-inch Small L-Shaped Sofa with Reversible Ottoman Instruction Manual

JUMMICO B0FCFRBQS1

JUMMICO 73-inch Small L-Shaped Sofa with Reversible Ottoman Instruction Manual

Model: B0FCFRBQS1

1. INTRODUCTION

This manual provides detailed instructions for the assembly, operation, and maintenance of your JUMMICO 73-inch Small L-Shaped Sofa with Reversible Ottoman. Please read this manual thoroughly before assembly and use to ensure proper setup and longevity of your product.



Image 1.1: The JUMMICO 73-inch Small L-Shaped Sofa with Reversible Ottoman in Dark Grey.

2. SAFETY INFORMATION

- Keep all packaging materials, especially plastic bags, away from children to prevent suffocation.
- Ensure all bolts and screws are securely tightened before using the sofa. Periodically check and re-tighten as necessary.
- Do not stand on the sofa or use it as a step stool.
- Avoid placing the sofa near open flames or heat sources.
- Do not exceed the recommended weight capacity of the sofa.

3. PACKAGE CONTENTS

Your JUMMICO sofa is shipped in two separate boxes. Please ensure you have received both packages before beginning assembly. The arrival time of the packages may vary.

Expected Components:

- Sofa frame sections
- Seat cushions (vacuum-compressed)
- Backrest cushions (vacuum-compressed)
- Ottoman frame and cushion
- Legs
- Hardware pack (bolts, washers, Allen wrench)

Product Dimensions



Shipped in 2 packages.
The arrival time of the packages may vary.

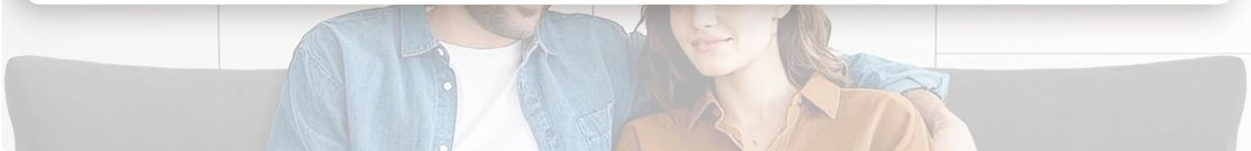


Image 3.1: Illustration showing product dimensions and that the sofa ships in two packages.

4. SETUP (ASSEMBLY INSTRUCTIONS)

Assembly is required for this sofa. It is recommended to have two people for easier and quicker assembly. Please follow these steps carefully:

1. **Unpack all components:** Carefully remove all parts from the two boxes and lay them out on a clean, soft surface to prevent scratches. Verify all components listed in Section 3 are present.
2. **Attach the legs:** Securely attach the sofa legs to the designated points on the bottom of the sofa frame sections and the ottoman using the provided hardware. Ensure they are tightened firmly.

3. **Connect sofa sections:** Join the main sofa sections together according to the provided diagrams in your physical manual. Ensure the connecting brackets align and lock into place.
4. **Position the ottoman:** The ottoman is reversible and can be placed on either the left or right side of the sofa to form an L-shape, or used independently.
5. **Prepare cushions:** The seat and backrest cushions are vacuum-compressed for shipping. Gently pat and fluff them to help them regain their full shape and thickness. This may take some time.
6. **Place cushions:** Position the seat and backrest cushions onto the sofa frame.



Image 4.1: Instructions for fluffing vacuum-compressed cushions and a reminder of two-box delivery.

5. OPERATING (USAGE)

Your JUMMICO sofa is designed for versatile use in small living spaces.

Reversible Ottoman:

The ottoman can be easily moved to either the left or right side of the sofa to create an L-shaped sectional, or it can be used as a standalone footrest or extra seating. This flexibility allows you to adapt the sofa layout to your room's configuration or personal preference.

Multiple Placement Methods



Image 5.1: Various configurations demonstrating the reversible ottoman placement.

Seating Capacity:

This sofa is designed to comfortably seat three individuals.

Features:

- **Breathable Linen Fabric:** The sofa is upholstered in a breathable linen fabric, designed for comfort.
- **Compact Design:** Its 73-inch size and L-shaped configuration are optimized for small living rooms, apartments, bedrooms, or home offices.
- **Sturdy Construction:** Features a solid wood frame for durability.

Skin-friendly Fabrie Sofa



Image 5.2: Detail of the sofa's skin-friendly and breathable linen fabric.



Image 5.3: Illustration of the seating construction, featuring ultra soft sponge and double-layer spring bag for comfort and elasticity.

6. MAINTENANCE

Proper care and maintenance will extend the life and appearance of your sofa.

Cleaning Instructions:

- **Cushion Covers:** The covers of the cushions are removable for easy cleaning. Refer to the care label on the cushion covers for specific washing instructions. Typically, spot cleaning with a mild detergent and water is recommended for minor spills.
- **Frame and Legs:** Wipe the sofa frame and legs with a soft, damp cloth. Avoid harsh chemicals or abrasive cleaners.
- **Underneath the Sofa:** The sofa features 5.9-inch legs, providing ample space for easy cleaning underneath.

General Care:

- Avoid direct sunlight exposure to prevent fading of the fabric.
- Rotate cushions periodically to ensure even wear.
- Address spills immediately to prevent stains.



Image 6.1: Detail highlighting the supportive and soft cushions, and breathable linen material.

7. TROUBLESHOOTING

- **Cushions appear flat:** As cushions are vacuum-compressed for shipping, they may appear flat upon unpacking. Gently pat and fluff them to help them expand to their full shape. This process may take some time.
- **Missing parts:** If any parts are missing, please check both shipping boxes thoroughly. If still missing, contact JUMMICO customer support.
- **Sofa feels unstable:** Ensure all bolts and screws are fully tightened. Re-tighten any loose connections.
- **Delivery of multiple boxes:** The sofa ships in two separate packages. It is normal for these packages to arrive at different times. Please wait for both boxes before starting assembly.

8. SPECIFICATIONS

Brand	JUMMICO
Model Number	B0FCFRBQS1

Product Dimensions (D x W x H)	40.9"D x 73.6"W x 34.2"H
Item Weight	55.12 Pounds
Color	Dark Grey
Material Type	Linen Fabric
Seating Capacity	3.0
Seat Height	18 Inches
Arm Style	Track
Special Features	Breathable, Compact, Space Saving
Assembly Required	Yes

9. WARRANTY AND SUPPORT

Warranty Information:

For specific warranty details, please refer to the documentation included with your purchase or contact JUMMICO customer support directly. Warranty terms may vary.

Customer Support:

If you have any questions, require assistance with assembly, or encounter any issues with your JUMMICO sofa, please contact JUMMICO customer support. Contact information can typically be found on the product packaging or the official JUMMICO website.