

SOUYIE GTX13

SOUYIE Smart Watch for Women

MODEL: GTX13 - INSTRUCTION MANUAL

1. INTRODUCTION AND OVERVIEW

The SOUYIE Smart Watch for Women, Model GTX13, is a versatile fitness tracker and smartwatch designed to support a healthy and connected lifestyle. Featuring a vibrant 1.99-inch AMOLED display, it offers comprehensive health monitoring, diverse sports modes, and convenient smart functionalities. This manual provides detailed instructions for setup, operation, maintenance, and troubleshooting to ensure optimal use of your device.



Figure 1: SOUYIE Smart Watch for Women, Model GTX13, on a wrist.

2. WHAT'S IN THE BOX

Your SOUYIE Smart Watch package includes the following items:

- 1 x SOUYIE Smart Watch (GTX13)
- 1 x User Manual
- 1 x TPU Silicone Strap (pre-attached or included separately)
- 1 x USB Magnetic Charging Cable

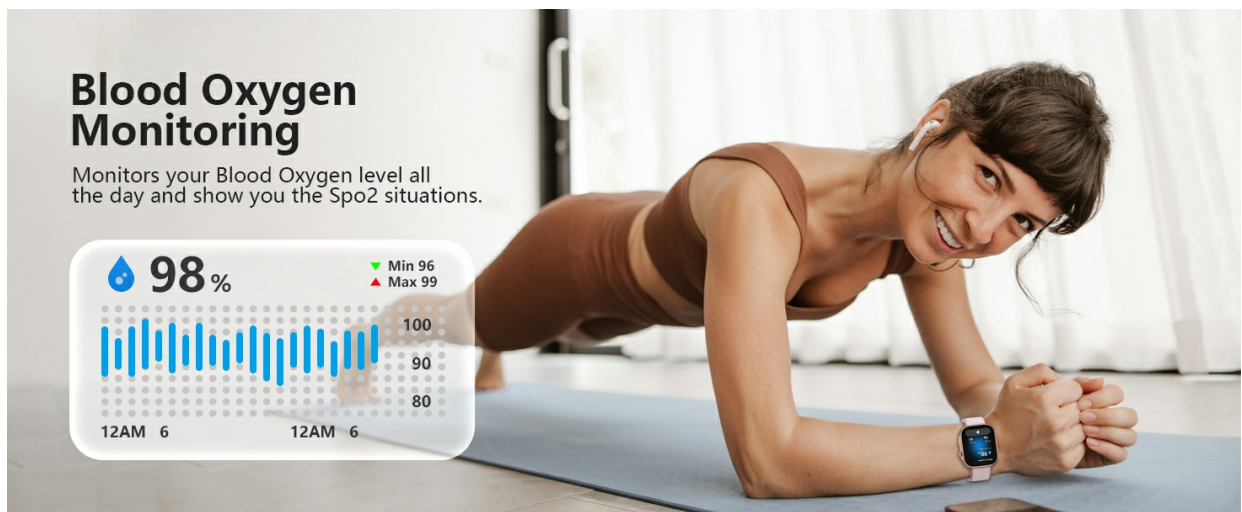


Figure 2: Package contents of the SOUYIE Smart Watch.

3. SETUP

3.1 Charging the Smart Watch

Before initial use, fully charge your SOUYIE Smart Watch. Connect the provided USB magnetic charging cable to the charging points on the back of the watch and to a USB power source. The watch will display a charging indicator. A full charge takes approximately 1.5 hours.



Figure 3: Smart Watch displaying charging status.

3.2 App Download and Pairing

To unlock all features and synchronize data, download the companion app. The app is compatible with Android 6.0+ and iOS 11.0+.

1. Scan the QR code provided in the user manual or on the watch screen to download the 'VeryFit' app.
2. Register an account and complete your personal profile.
3. Ensure Bluetooth is enabled on your smartphone.
4. Open the 'VeryFit' app, navigate to the device section, and follow the on-screen instructions to pair your SOUYIE Smart Watch.



Figure 4: Easy setup guide for the Smart Watch.

4. OPERATING THE SMART WATCH

4.1 Basic Navigation

The SOUYIE Smart Watch features a responsive 1.99-inch AMOLED touchscreen and a physical button for navigation:

- **Swipe Up/Down/Left/Right:** Navigate through different menus, notifications, and quick settings.
- **Tap:** Select an item or confirm an action.
- **Press Side Button:** Return to the home screen or access the app list.

4.2 Health Monitoring

Equipped with a fifth-generation optical sensor, the watch provides 24/7 health monitoring:

- **Heart Rate:** Continuous monitoring with alerts for abnormal readings.
- **Blood Pressure:** Real-time display of blood pressure values.
- **Blood Oxygen (SpO2):** Monitors blood oxygen levels throughout the day.
- **Stress Monitoring:** Tracks stress levels and provides insights.
- **Sleep Quality:** Automatically identifies deep sleep, light sleep, and awake times, generating detailed reports in the app.
- **Menstrual Cycle Tracking:** Effectively reminds women of their next menstrual period and provides cycle insights.

Your Health Assistant

Accurately track blood pressure/heart rate/SpO2/sleep/stress

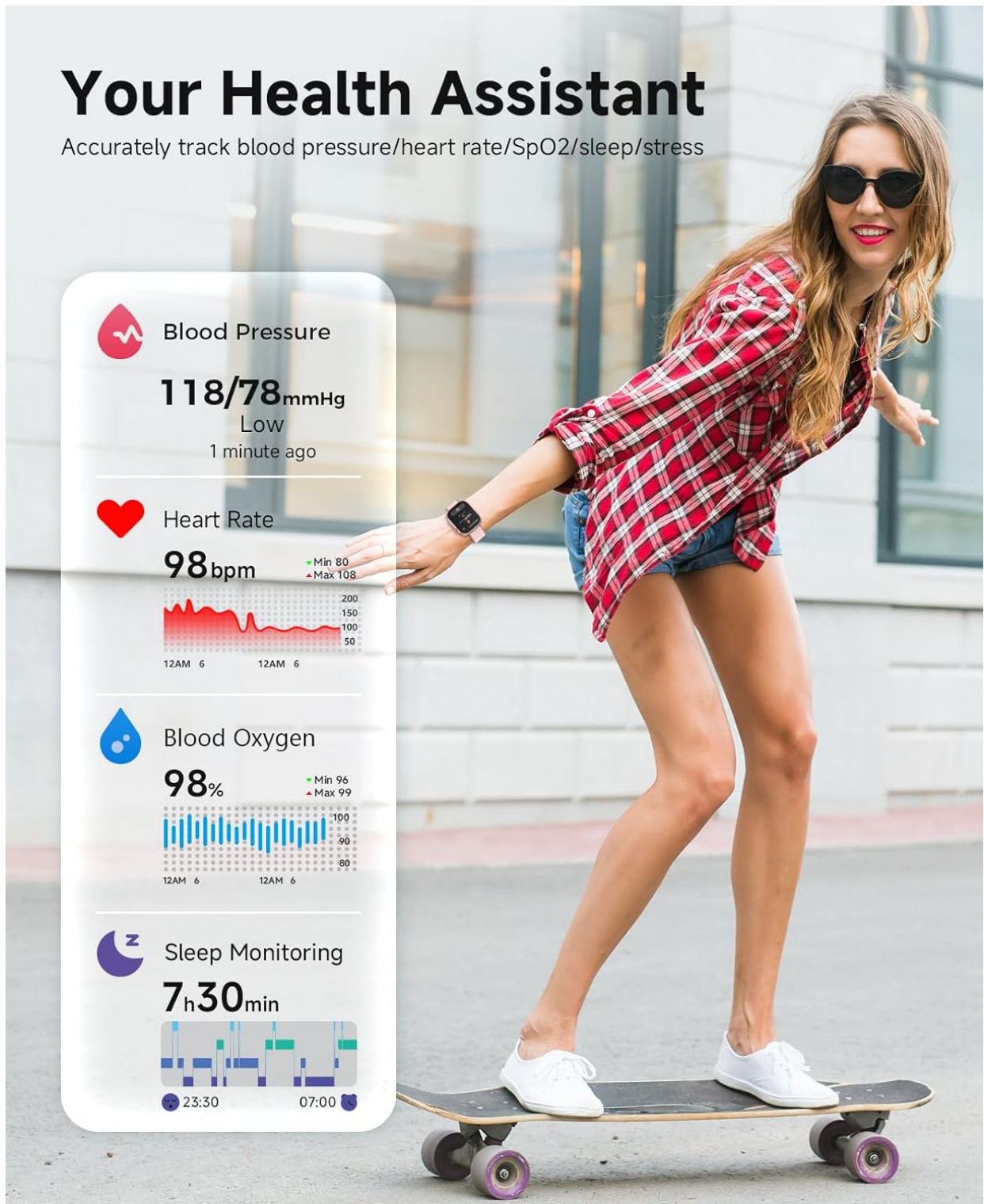


Figure 5: Health monitoring features on the Smart Watch.

4.3 Sports Modes

The watch supports over 100 sports modes, including running, cycling, swimming, and yoga. It accurately records data such as steps, distance, and calories. The smart running function offers real-time progress monitoring, personalized guidance, and tailored training plans.

100+ Sports Modes

The running courses in the APP help you exercise



Figure 6: Smart Watch tracking various sports activities.

4.4 Connectivity & Smart Features

Stay connected with advanced features:

- **Bluetooth 5.3 Calls:** Stable call signal, built-in microphone and speaker for making and answering calls directly from the watch.
- **AI Voice Assistant:** Supports voice assistants like Siri and Google Assistant for convenient hands-free control.
- **Smart Message Reminders:** Receive notifications for calls, messages, and app alerts.
- **Music Control:** Manage music playback on your smartphone.
- **Camera Remote:** Use the watch to remotely control your phone's camera.
- **Practical Tools:** Includes calculator, calendar, weather forecast, and built-in games.

Figure 7: Multifunctional Smart Assistant features.



Figure 8: Bluetooth 5.3 Call functionality.

5. BATTERY AND CHARGING

The Smart Watch is equipped with a 350mAh battery, offering 10-12 days of typical use. Fast charging technology allows the device to be fully charged in 1.5 hours.

6. WATERPROOFING

The Smart Watch has a 3ATM waterproof rating, supporting water resistance up to 30 meters. This makes it suitable for activities such as washing hands, exercising in the rain, and swimming. It features a dustproof design and a built-

in drainage function for enhanced durability.



Figure 9: Smart Watch demonstrating 3ATM waterproof capability.

7. CUSTOMIZATION

The 1.99-inch AMOLED high-definition large screen (410x494 resolution, 600 nits brightness, 60Hz refresh rate) provides a delicate and smooth display. You can personalize your watch with over 100 customizable dials available through the app.

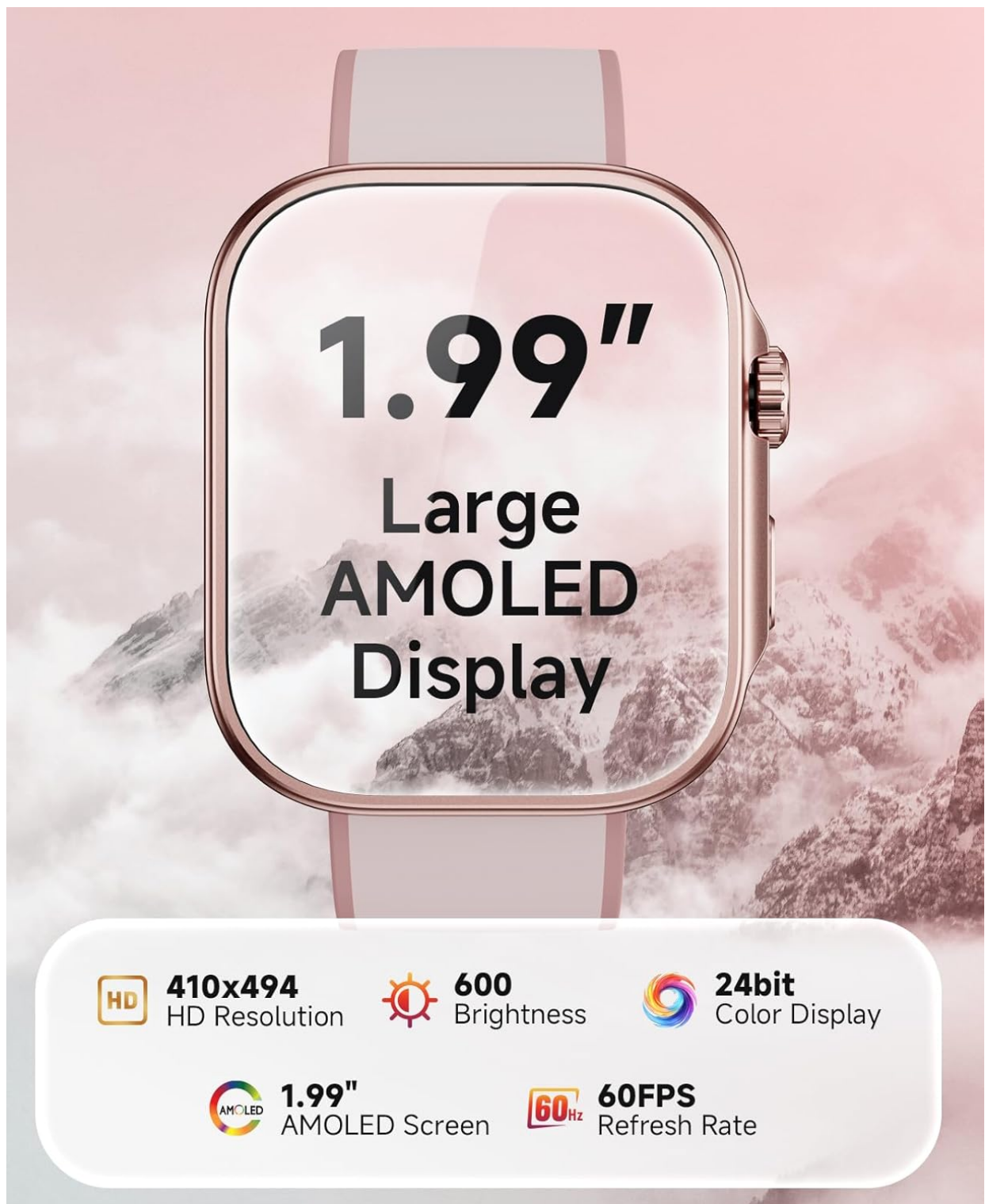


Figure 10: 1.99-inch AMOLED Display.

Multiple Watch Faces

You can customize the watch face & APP has multiple exquisite dynamic watch face



Figure 11: Multiple Watch Faces for personalization.

8. SPECIFICATIONS

Feature	Value
Model Number	f484b78c-7142-4670-9e32-580b7c850724 (GTX13)
Screen Size	1.99 Inches AMOLED
Resolution	410x494
Brightness	600 nits

Refresh Rate	60Hz
Battery Capacity	350 mAh
Battery Life	10-12 days (typical use)
Charging Time	1.5 hours
Waterproof Rating	3ATM (30 meters)
Connectivity	Bluetooth 5.3
Compatibility	Android 6.0+, iOS 11.0+
Item Weight	43 Grams (1.52 ounces)
Special Features	Activity tracker, alarm clock, blood pressure monitor, calorie tracker, camera remote, heart rate monitor, notifications, oximeter (SpO2), pedometer, phone calls, sleep monitor, text messaging, AI voice assistant

9. WARRANTY AND SUPPORT

SOUYIE offers a 30-day free return policy, a 3-year warranty, and 24/7 customer support. For any questions or assistance, please contact us through the "Find Order-Contact Seller" option on your purchase platform.

10. PRODUCT VIDEOS

10.1 Smartwatch Overview and Features

Video 1: A seller provides an honest review, highlighting key features and ease of use of the smartwatch, including its large screen and workout functions.