



Manuals.plus /

› LINSY HOME /

› LINSY HOME Sectional Sleeper Sofa with Pull-Out Bed and Storage Chaise (Model B0FCD2Z3N1) - Instruction Manual

LINSY HOME B0FCD2Z3N1

LINSY HOME Sectional Sleeper Sofa with Pull-Out Bed and Storage Chaise

Model: B0FCD2Z3N1

1. INTRODUCTION

Thank you for choosing the LINSY HOME Sectional Sleeper Sofa. This versatile furniture piece is designed to provide comfort and functionality, featuring a convertible pull-out bed, integrated storage chaise, USB charging ports, and convenient cup holders. Crafted with plush corduroy fabric, it offers a soft and supportive seating experience. This manual provides detailed instructions for assembly, operation, maintenance, and troubleshooting to ensure optimal use and longevity of your sofa.



Overall view of the LINSY HOME Sectional Sleeper Sofa in green.

2. SAFETY INFORMATION

- Ensure all components are securely fastened before use.
- Do not exceed the maximum weight capacity of 660 lbs.
- Keep small children and pets away during assembly to prevent injury.
- Avoid standing or jumping on the sofa.
- When converting the sofa to a bed, ensure the area is clear of obstructions.
- Use caution when operating the pull-out bed mechanism to prevent pinching.

3. PACKAGE CONTENTS

Your LINSY HOME Sectional Sleeper Sofa is shipped in multiple packages. Please verify that all components are present before beginning assembly.

Choose a More Comfortable Sofa

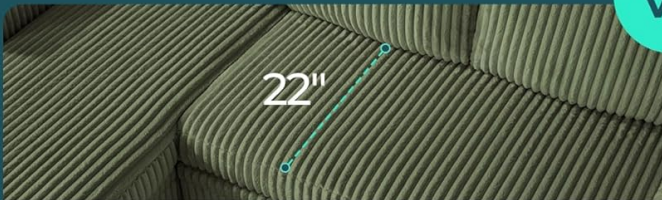
LINSY HOME



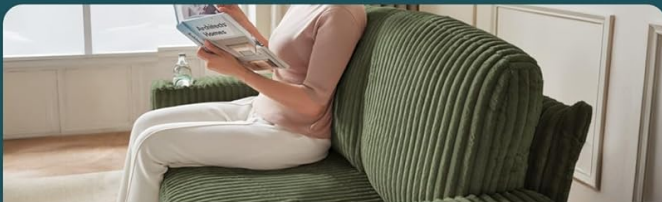
✔ Luxurious Deep Ribbed Corduroy



✔ Multi-Functional Cozy Armrests



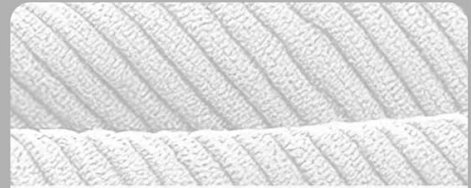
✔ Spacious 22" Seat Depth



✔ Plush, Supportive Back Cushions

Vs

OTHER



✘ Cheap Shallow Ribbed Corduroy



✘ Narrow, Basic Armrests



✘ Cramped 18" Seat Depth



✘ Flat, Unsupportive Back Cushions

Illustration of product dimensions and indication of multiple packages.

Components List:

- Armrests (Left and Right, one with USB charging port and cup holder)
- Seat Base Modules
- Pull-Out Bed Module
- Storage Chaise Module
- Backrest Cushions
- Sofa Legs
- Wheels for Pull-Out Bed
- Connecting Brackets and Screws
- Allen Wrench (included)

4. SETUP AND ASSEMBLY

Assembly of your LINSY HOME Sectional Sleeper Sofa is designed to be straightforward. Follow these steps

carefully. Two people are recommended for easier assembly.

Assembly Video Guide:

Official LINSY HOME Sleeper Sofa Installation Video Guide.

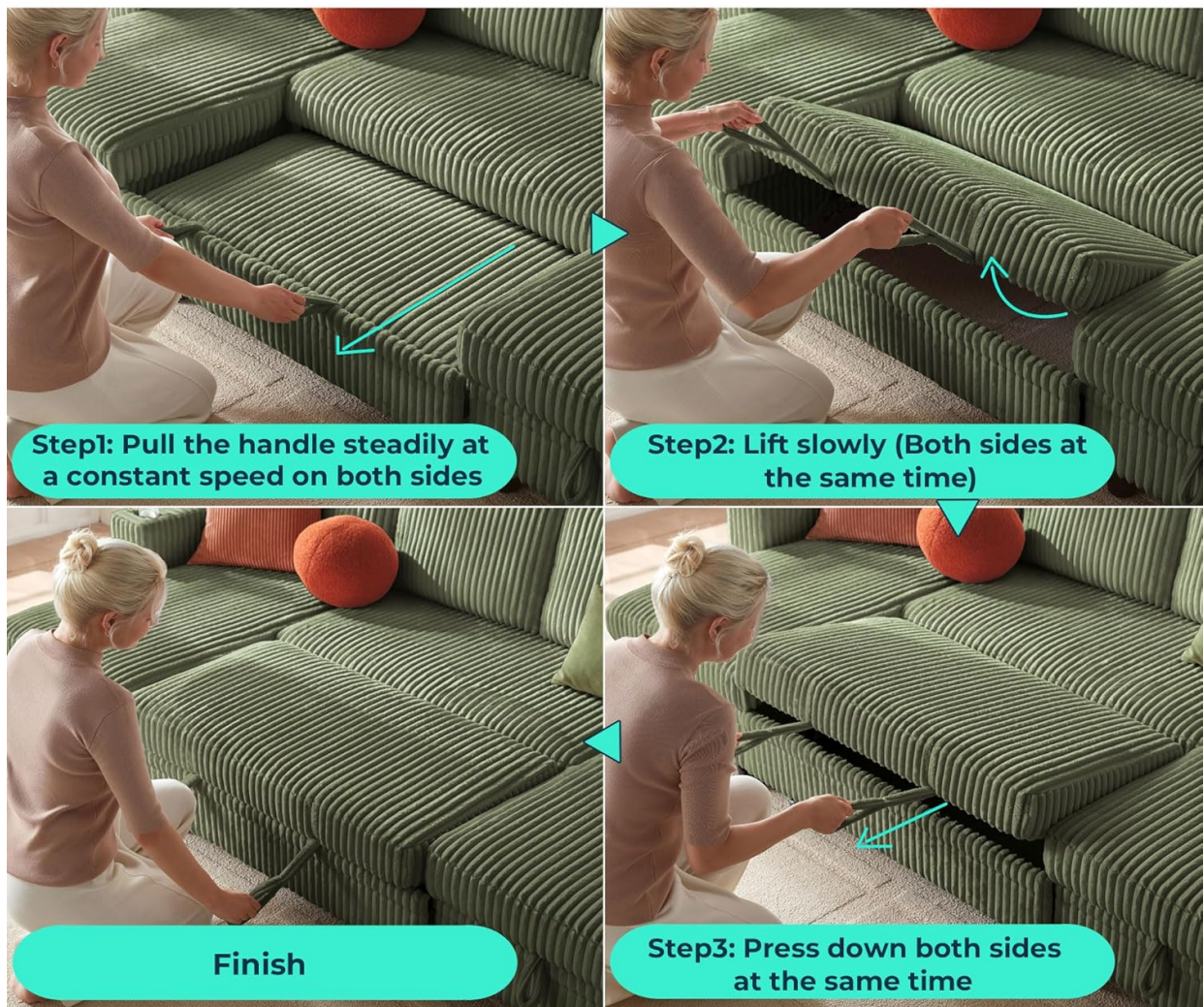
Detailed video on how to install the LINSY HOME Sectional Sleeper Sofa.

Step-by-Step Instructions:

1. **Attach Sofa Legs:** Carefully unbox all components. Locate the sofa legs and attach them to the underside of each armrest, seat base, and storage chaise module by twisting them clockwise until secure. Ensure the protective pads are in place.
2. **Install Pull-Out Bed Wheels:** For the pull-out bed module, attach the designated wheels to the underside using the provided screws and Allen wrench. Ensure they are firmly installed for smooth operation.
3. **Connect Modules:** Arrange the armrests, seat base modules, pull-out bed module, and storage chaise module in your desired L-shaped configuration (left-facing or right-facing chaise). Use the metal connecting brackets on the sides of each module to interlock them. Ensure the direction of connecting metal parts is distinguished for proper alignment.
4. **Install Backrests:** Slide the backrest cushions onto the corresponding metal brackets on the back of each seat module. Ensure they click securely into place.
5. **Place Seat Cushions:** Position the seat cushions onto their respective modules. Note that the large cushion is for the corner seat, and the rest are small cushions.
6. **Connect USB Power:** Locate the power cord for the USB charging port, typically found in a pocket at the bottom of the armrest. Plug it into a wall outlet.

Pull Out Sofa Bed

Tips: Pull the sofa out slowly to avoid the wheels getting derailed



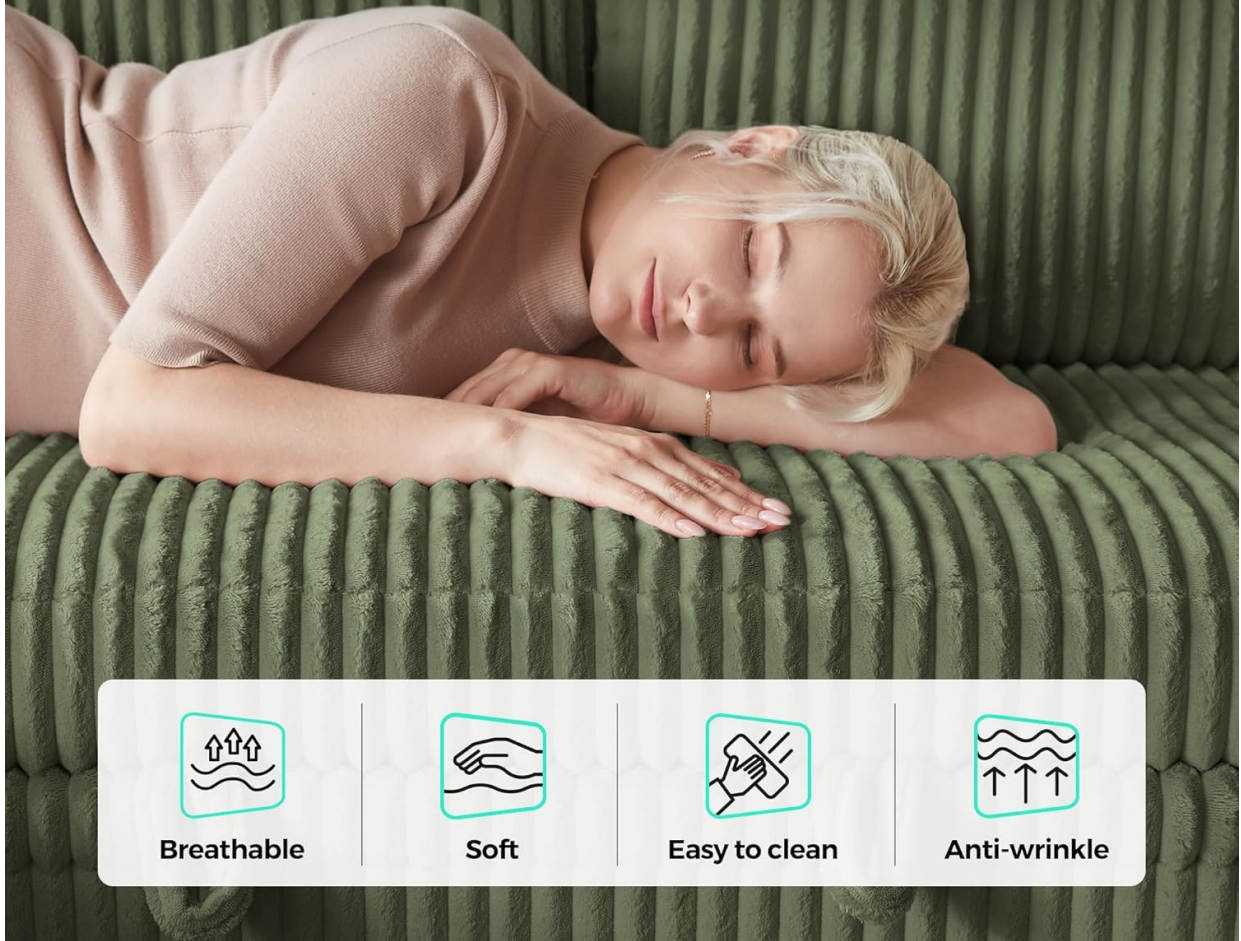
Example of flexible modular configurations for the sectional sofa.

5. OPERATING INSTRUCTIONS

5.1. Converting to Sleeper Bed

The sofa easily converts into a comfortable bed. No tools are required.

Luxurious & Comfortable Corduroy Fabric



Visual guide for converting the sofa to a bed.

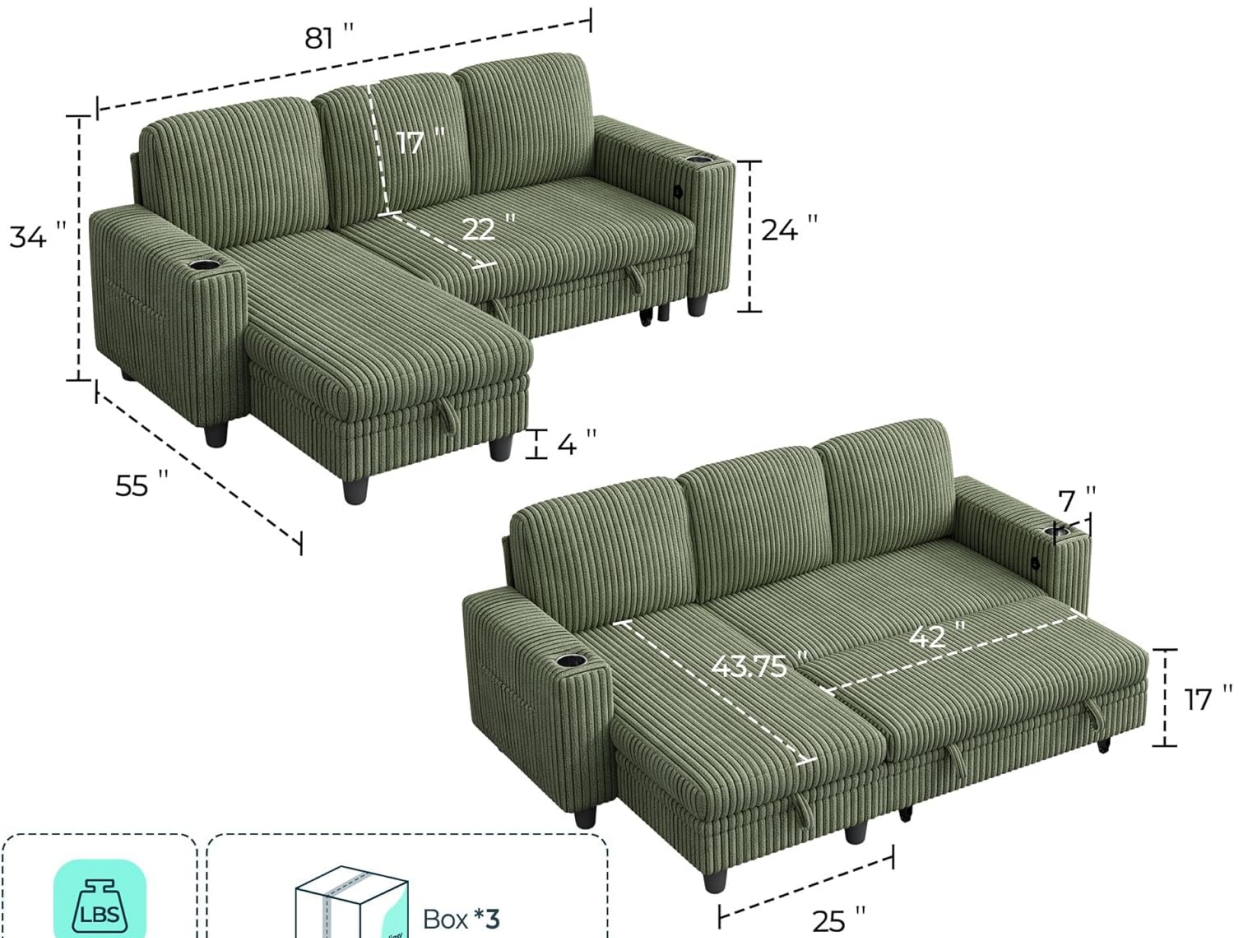
1. **Step 1:** Pull the handle steadily at a constant speed on both sides of the pull-out section.
2. **Step 2:** Lift slowly (both sides at the same time) to extend the bed frame.
3. **Step 3:** Press down both sides at the same time to lock the bed into a flat position.

To return to sofa position, reverse the steps: lift the bed frame slightly, push it back into the sofa base, and ensure it locks securely.

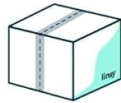
5.2. Using the Storage Chaise

The chaise module features a convenient hidden storage compartment.

Product Size & Weight Capacity



660 LBS weight capacity



Box *3

Shipped in 3 Packages
(Maybe arrived separately at different times)

The sofa with its pull-out bed and storage chaise in the open position.

- To access, simply lift the seat cushion of the chaise module.
- The lid will stay open, allowing you to store blankets, pillows, or other items.
- Gently lower the cushion to close the compartment.

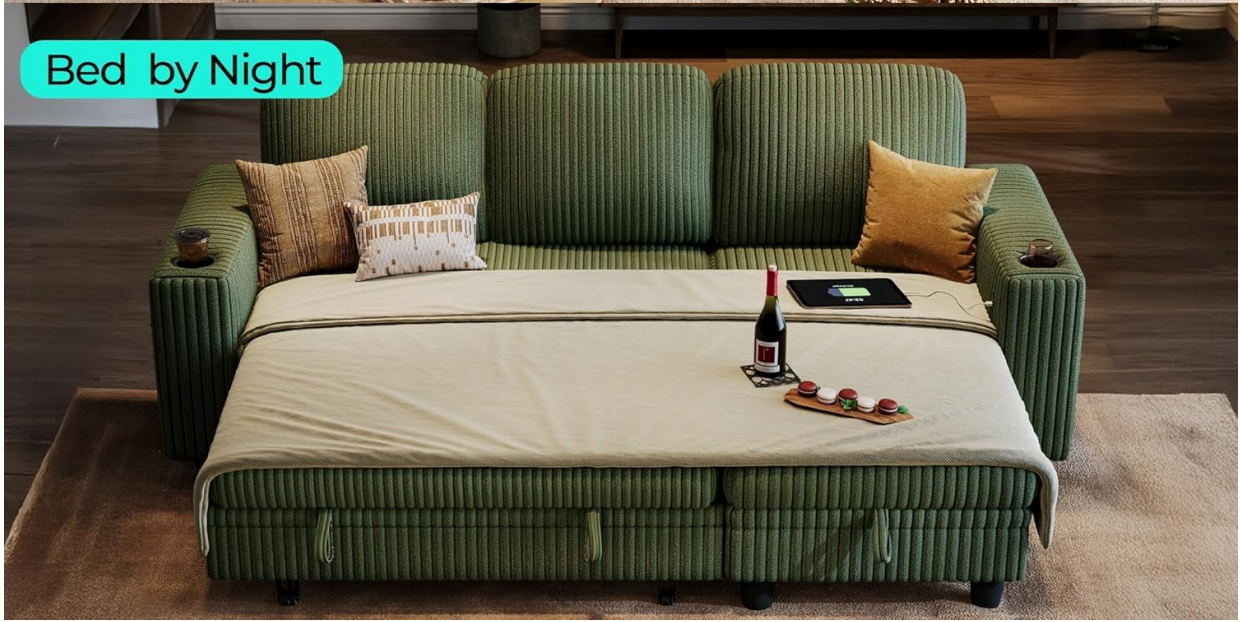
5.3. USB Charging Ports and Cup Holders

The armrest includes integrated USB and Type-C charging ports, along with two cup holders and a side storage pocket.

Sofa by Day



Bed by Night



Close-up of the armrest showing the USB charging port, cup holders, and side pocket.

- Plug your device into the USB or Type-C port for convenient charging.
- Use the cup holders to secure beverages and prevent spills.
- The side pocket is ideal for storing magazines, remote controls, or small personal items.

6. MAINTENANCE

6.1. Fabric Care (Plush Corduroy)

The sofa is made of high-quality plush corduroy fabric, which is comfortable and breathable.

Life-Convenient Design

- ✔ USB charging port
- ✔ Storage pocket
- ✔ Two cup holders
- ✔ Widen armrest



Detail of the plush corduroy fabric.

- **Regular Cleaning:** Vacuum regularly using an upholstery attachment to remove dust and debris.
- **Spot Cleaning:** For spills, blot immediately with a clean, dry cloth. Do not rub. For stubborn stains, use a mild fabric cleaner following the product instructions, testing on an inconspicuous area first.
- **Avoid Direct Sunlight:** Prolonged exposure to direct sunlight can cause fading.
- **Cushion Care:** Fluff and rotate cushions periodically to maintain their shape and even out wear.

6.2. General Care

- Check and tighten all screws and bolts periodically to ensure stability.
- Keep the sofa away from heat sources and excessive moisture.

7. TROUBLESHOOTING

- **Issue:** Pull-out bed wheels getting derailed.
Solution: Ensure the pull-out mechanism is operated slowly and steadily. Check for any obstructions on the floor or within the mechanism.

- **Issue:** Sofa feels unstable or wobbly.
Solution: Re-check all connecting brackets, screws, and legs to ensure they are fully tightened.
 - **Issue:** Cushions appear flat or compressed.
Solution: Allow compression-packed cushions 72 hours to fully expand after unpacking. Fluff and rotate cushions regularly to help them regain shape.
 - **Issue:** USB charging port not working.
Solution: Verify that the power cord for the USB port is securely plugged into a functional wall outlet. Check the connection between the device and the USB port.
-

8. SPECIFICATIONS

Brand	LINSY HOME
Model	Sleeper Sofa 1 (B0FCD2Z3N1)
Product Dimensions	55"D x 81"W x 34"H
Item Weight	130 Pounds
Weight Limit	660 Pounds
Seating Capacity	4
Material Type	Plush Corduroy
Fill Material	High Density Foam
Additional Features	Cup Holder, Pull Out Sofa, Side Pockets, USB Charging Ports
Assembly Required	Yes (Includes All Assembly Tools)

9. WARRANTY AND SUPPORT

For warranty information or customer support, please refer to the documentation included with your purchase or contact LINSY HOME directly through their official channels. You may also visit the LINSY HOME Store on Amazon for further assistance.
