

Hikity A7455A3453H1MI2-EU20

Hikity 8 Core 4G+64G Android 15 Car Radio User Manual

Model: A7455A3453H1MI2-EU20 | Brand: Hikity

Compatible with Nissan Juke J15 (2010-2019) and Infiniti ESQ (2011-2017)

1. INTRODUCTION

Thank you for choosing the Hikity 8 Core 4G+64G Android 15 Car Radio. This device is designed to enhance your driving experience with advanced features such as wireless CarPlay, Android Auto, GPS navigation, Bluetooth 5.0, DSP sound processing, and FM/RDS radio. This manual provides detailed instructions for installation, operation, maintenance, and troubleshooting to ensure optimal performance and longevity of your car radio.

This car radio is specifically compatible with Nissan Juke J15 models from 2010-2019 and Infiniti ESQ models from 2011-2017. Its plug-and-play design simplifies installation by utilizing an adaptation cable, eliminating the need for complex automotive cable modifications.

2. SAFETY INFORMATION

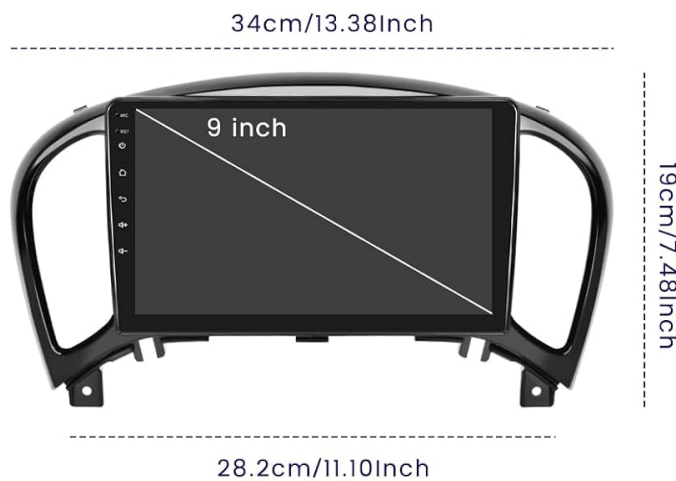
- **Professional Installation Recommended:** For safety and proper functionality, professional installation is highly recommended.
- **Power Disconnection:** Always disconnect the vehicle's battery before attempting any installation or wiring.
- **Wiring:** Ensure all wiring connections are secure and correctly matched to avoid short circuits or damage.
- **Driving Safety:** Do not operate complex functions or watch videos that may distract you while driving. Always prioritize road safety.
- **Temperature:** Avoid exposing the device to extreme temperatures or direct sunlight for prolonged periods.
- **Cleaning:** Use a soft, dry cloth for cleaning the screen and unit. Avoid abrasive cleaners or solvents.

3. PACKAGE CONTENTS

Please verify that all items listed below are included in your package:

- 1 x Car Radio Unit
- 1 x Power Cable
- 1 x GPS Antenna
- 1 x Power Cable for Rear Camera
- 1 x RCA Cable
- 2 x USB Cables
- 1 x Microphone
- 1 x Installation Tools Set
- 1 x AHD Rear Camera
- 1 x Canbus Decoder

Product Size & Packing List



1. Power Cable
2. RCA Input/Output
3. Reversing Camera Input
4. USB Cable
5. GPS Antenna
6. Radio Antenna

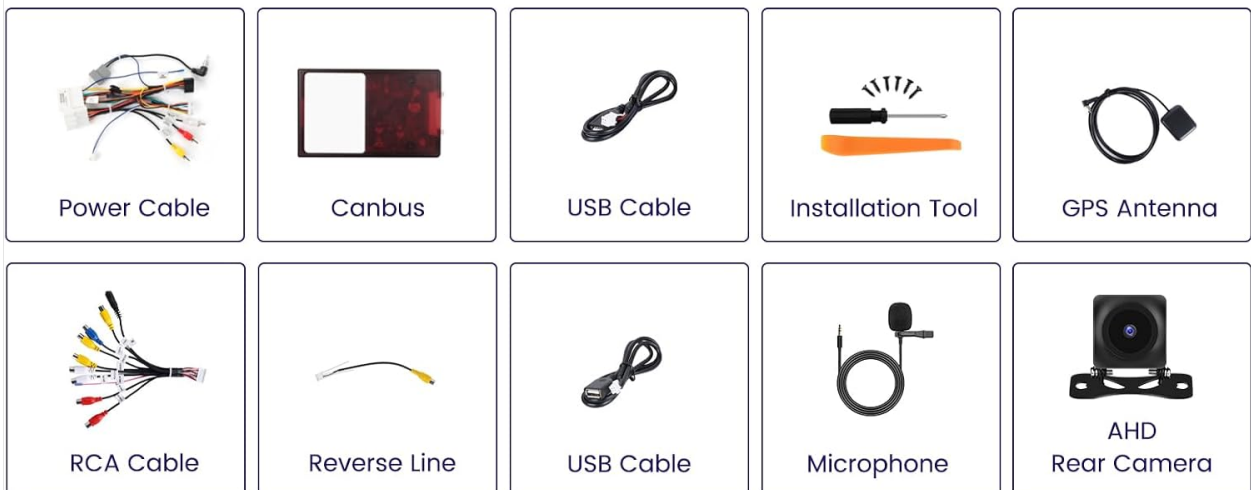


Image: Product dimensions and a visual representation of the included accessories, including power cable, Canbus, USB cables, installation tool, GPS antenna, RCA cable, reverse line, microphone, and AHD rear camera.

Contain CANBUS Decoder:

Please connect the canbus before powering on, and follow this path (Apps-Setting -Factory Set UP: 1234-CAN settings). First select the brand of the canbus, then select the matching model and year.



Image: Detailed diagram showing the car radio unit with numbered ports (1. Power Cable, 2. RCA Input/Output, 3. Reversing Camera Input, 4. USB Cable, 5. GPS Antenna, 6. Radio Antenna) and a list of included accessories.

4. SETUP AND INSTALLATION

4.1 Vehicle Compatibility

This car radio is designed for a direct fit in Nissan Juke J15 (2010-2019) and Infiniti ESQ (2011-2017) models. The plug-and-play design ensures seamless integration with your vehicle's existing wiring harness using the provided adaptation cable.

For Nissan Juke J15 2010-2019 YF15 Infiniti ESQ 2011-2017

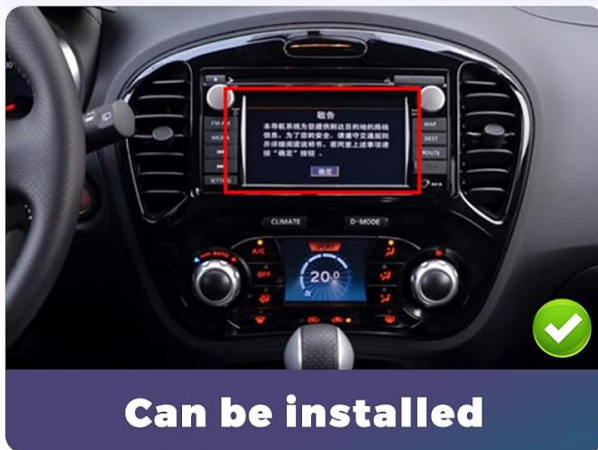
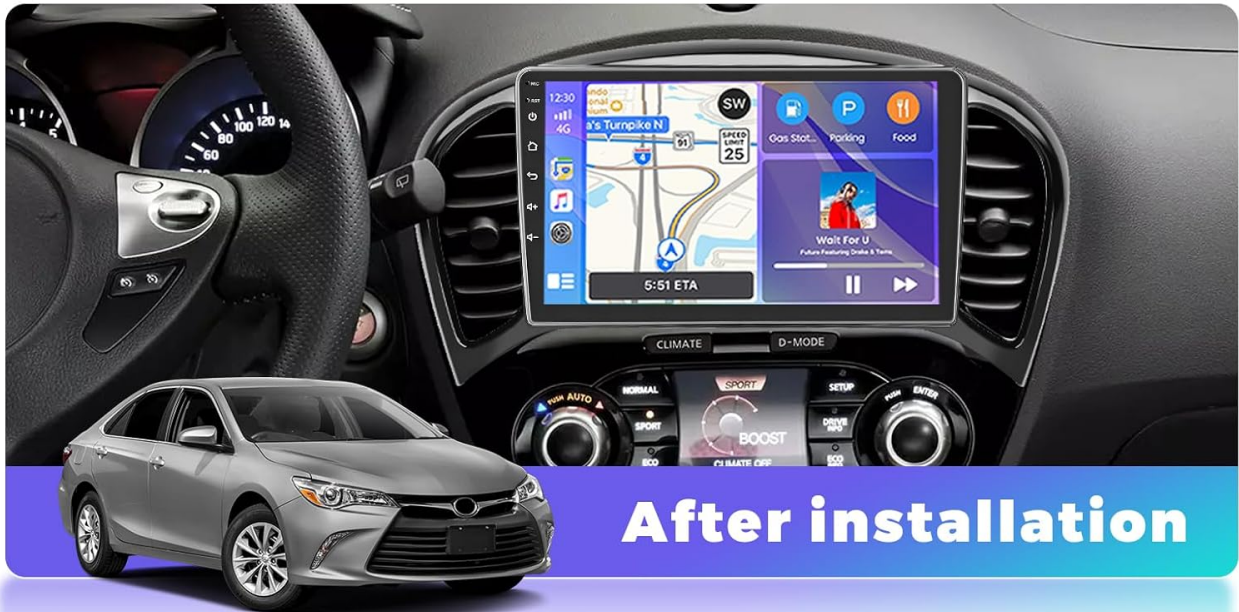


Image: Visual comparison showing the car radio installed in a compatible Nissan Juke/Infiniti ESQ dashboard (left) and examples of incompatible dashboards (right), indicating which original car radio types can be replaced.

4.2 Wiring Connections

Follow the wiring diagram carefully. Ensure all cables are securely connected to their corresponding ports.

4.2.1 CANBUS Decoder Connection

Connect the CANBUS decoder before powering on the unit. After installation, navigate to **Apps > Setting > Factory Set Up (Password: 1234) > CAN settings**. Select the correct brand, model, and year of your vehicle to ensure proper communication between the car radio and your vehicle's systems.

AHD Backup Camera Wiring

How to Turn on off Guidelines:Car Info>About-Custom Set-turn on "show dynamic trackline" and "show static trackline"



Image: Instructions for connecting the CANBUS decoder and configuring steering wheel controls. It shows the CANBUS connection and a screen interface for learning steering wheel button functions.

4.2.2 AHD Backup Camera Wiring

The included AHD backup camera requires specific wiring:

- Connect the **red cable (1)** to the reversing light's positive (+) terminal.
- Connect the **black cable (2)** to the vehicle's ground (GND).

To enable or disable guidelines, navigate to **Car Info > About > Custom Set > turn on/off "show dynamic trackline" and "show static trackline"**.



Image: Diagram illustrating the wiring for the AHD backup camera, showing connections to the reversing light and ground, along with visual representations of 170° wide angle, night vision, waterproof, and HD features.

5. OPERATING INSTRUCTIONS

5.1 System Overview

The Hikity car radio features an 8-core processor, 4GB RAM, and 64GB ROM, providing faster startup and improved performance for a seamless user experience. It runs on the latest Android 15 system.

Seamless User Experience

4GB RAM

Faster startup and better performance.



64GB RAM

True storage space, higher capacity.

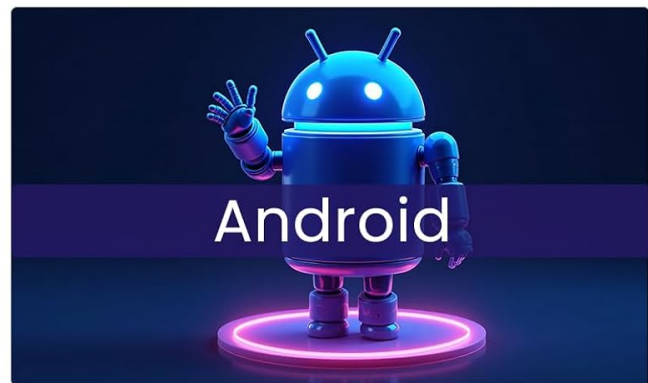
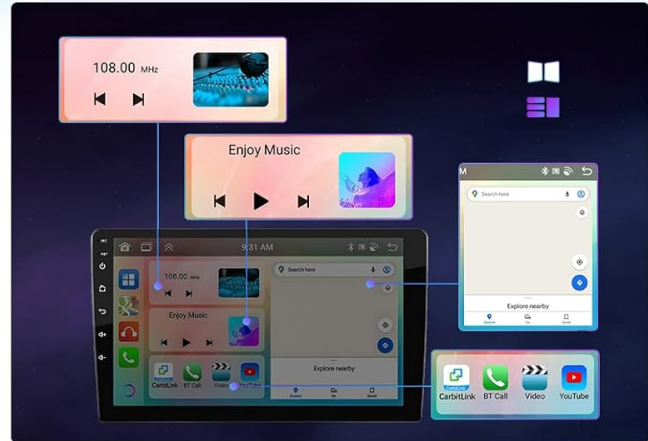


Image: Highlights the internal specifications of the car radio, including 4GB RAM for faster startup, 64GB ROM for true storage capacity, an 8-core processor, and the Android operating system interface.

5.2 Display and Interface

The unit features a 9-inch IPS touchscreen with a resolution of 1280x720 pixels, offering vivid images and a 178° viewing angle. You can customize your interface with 19 wallpaper options and 59 UI desktop themes.

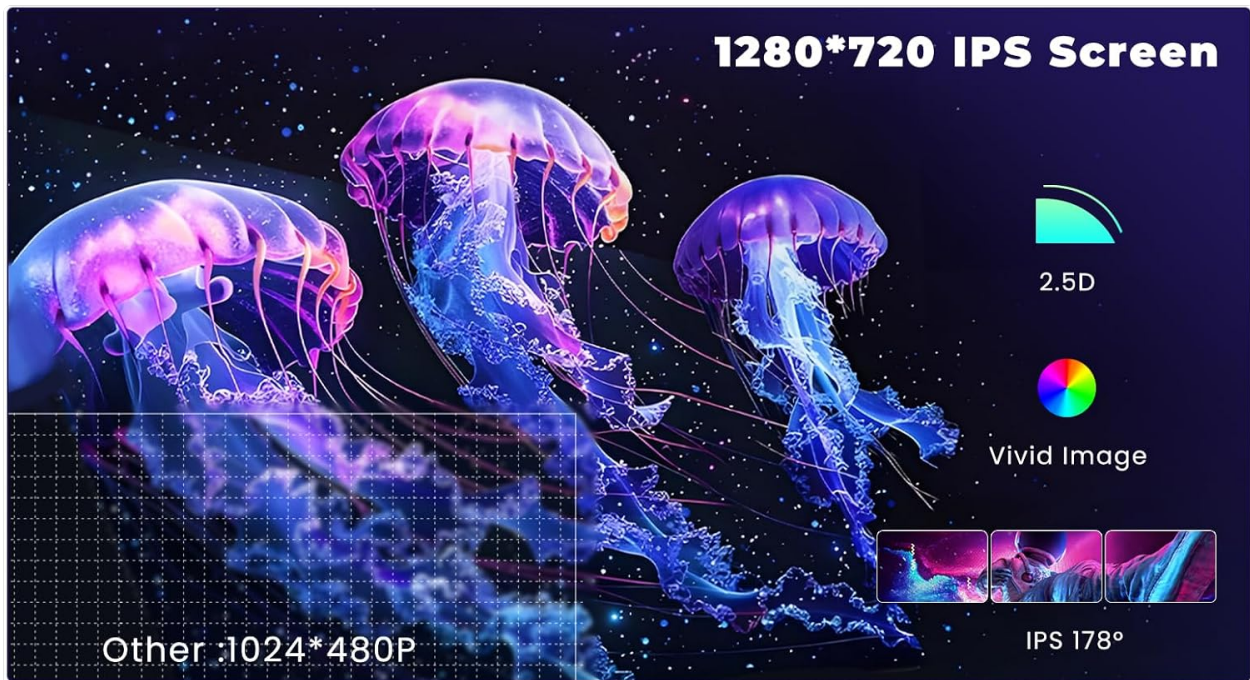
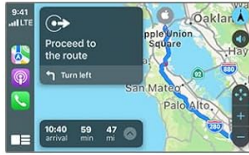


Image: Demonstrates the 1280x720 IPS screen quality, 2.5D curved glass, vivid image display, and 178° IPS viewing angle. It also shows examples of 19 wallpaper options and 59 UI desktop themes.

5.3 Wireless CarPlay & Android Auto

Connect your smartphone wirelessly via CarPlay (for iOS) or Android Auto (for Android devices). This allows you to access navigation, make hands-free calls, play music, and use various apps directly from the car radio screen. Activate Siri or Google Assistant for voice control.

Wireless/Wired Carplay & Android Auto



Carplay Map



Hands-free Calling



Online Music



Most Apps

IOS Carplay

- USB Connection
- BT Connection



Android Auto

- USB Connection
- BT Connection



Image: Shows the interface for Wireless/Wired CarPlay & Android Auto, displaying features like CarPlay Map, Hands-free Calling, Online Music, and various compatible apps. It also details USB and BT connection options for both iOS CarPlay and Android Auto.

5.4 GPS Navigation & Wi-Fi

The car radio includes an integrated GPS receiver supporting both online and offline maps. You can download worldwide offline maps for free. With Wi-Fi connectivity, access online maps, download apps from the Play Store, and browse the internet.



Image: Illustrates GPS accurate positioning with online/offline map capabilities, voice control features for hands-free operation, a three-split screen function allowing multiple applications on one page, and WiFi connection for online access.

5.5 Bluetooth 5.0, DSP & FM/RDS Radio

- **Bluetooth 5.0:** Enjoy hands-free calling, phonebook download, and music streaming.
- **DSP (Digital Sound Processor):** The integrated DSP with 32 bands allows you to customize audio settings to your preference, adapting to various music styles.
- **FM/RDS Radio:** High-quality FM/RDS audio receiver for clear radio reception.

32EQ DSP Function

Car DSP tuning software, using DSP tuning technology, you can adjust the frequency, AE,36-band equalization, 10-band equalization.



Image: Displays the 32EQ DSP function with tuning software for frequency adjustment (AE, 36-band equalization, 10-band equalization). Also shows the Bluetooth 5.0 interface for calls and music, and the FM/RDS radio interface.

5.6 Steering Wheel Control (SWC)

The unit supports your vehicle's steering wheel control functions. This allows for quick and safe adjustment of music tracks, volume, and other settings without taking your hands off the wheel. Refer to the CANBUS setup section (4.2.1) for configuration.

6. MAINTENANCE

- **Screen Cleaning:** Use a soft, lint-free cloth to gently wipe the touchscreen. For stubborn smudges, slightly dampen the cloth with water or a screen-safe cleaner. Avoid harsh chemicals.
- **Software Updates:** Periodically check for software updates provided by Hikity to ensure optimal performance, security, and access to new features. Follow the instructions provided with the update package.
- **General Care:** Keep the unit free from dust and debris. Ensure proper ventilation around the unit to prevent overheating.

7. TROUBLESHOOTING

If you encounter issues with your Hikity car radio, please refer to the following common problems and solutions:

Problem	Possible Cause	Solution
No Power	Incorrect wiring, blown fuse, vehicle battery issue.	Check power cable connections. Inspect vehicle fuses. Ensure battery is charged.
No Sound	Speaker wiring issues, volume too low, incorrect audio output settings.	Verify speaker connections. Increase volume. Check audio settings (e.g., balance, fader, DSP).
GPS Not Working / Inaccurate	GPS antenna not connected or poorly positioned, outdated maps, no internet connection for online maps.	Ensure GPS antenna is securely connected and placed in a clear view of the sky. Update maps. Check Wi-Fi/data connection.
Bluetooth Pairing Issues	Bluetooth not enabled on device or car radio, device not in pairing mode, interference.	Enable Bluetooth on both devices. Put phone in pairing mode. Restart both devices. Clear previous pairings.
CarPlay/Android Auto Disconnection (e.g., after phone update)	Software incompatibility after phone OS update, cable issue (for wired connection), app cache.	For wireless: Forget the car radio from your phone's Bluetooth/Wi-Fi settings and re-pair. Clear cache of CarPlay/Android Auto app on your phone. Check for car radio firmware updates. For wired: Try a different USB cable. Ensure phone OS is compatible with the car radio's CarPlay/Android Auto version.
Backup Camera Not Displaying	Incorrect wiring, camera malfunction, incorrect settings.	Verify camera power and video signal connections. Check if the camera input is enabled in settings. Ensure the car is in reverse gear.

If the problem persists after trying these solutions, please contact Hikity customer support for further assistance.

8. SPECIFICATIONS

Feature	Specification
Brand	Hikity
Model Number	A7455A3453H1MI2-EU20

Feature	Specification
Operating System	Android 15
Processor	8 Core
RAM	4 GB
ROM	64 GB
Screen Size	9 Inches
Screen Type	IPS Touchscreen
Resolution	1280x720
Connectivity Technology	Bluetooth 5.0, Ethernet, FM RDS, USB, Wi-Fi
Special Features	Wireless CarPlay, Wireless Android Auto, Built-in DSP EQ, GPS Navigation, Backup Camera Support
Compatible Devices	Amplifier, Headphones, Speaker, Smartphone, Tablet
Audio Output Mode	Stereo
Surround Sound Channels	4.0 or 4.1
Video Encoding	MKV / RMVB / AVI / MP4 / MDV
Output Power	45 Watts (per channel)
Total Wattage Output	180 Watts
Internet Applications	Blockbuster, Browser, Netflix, Pandora, iTunes (via Play Store)
Control Method	Touch
Digital Media Format	AVI, WAV, WMA
Country of Origin	China

9. WARRANTY AND SUPPORT

9.1 Warranty Information

This Hikity car radio comes with a **12-month warranty** from the date of purchase. This warranty covers manufacturing defects and malfunctions under normal use.

9.2 Customer Support

Hikity provides lifetime online assistance for all inquiries. Our support team aims to respond within 24 hours.

If you have any questions or require technical assistance, please contact us:

- **Email:** hikityservices@163.com
- **Online Inquiry:** You can also reach out through the seller's page on Amazon.

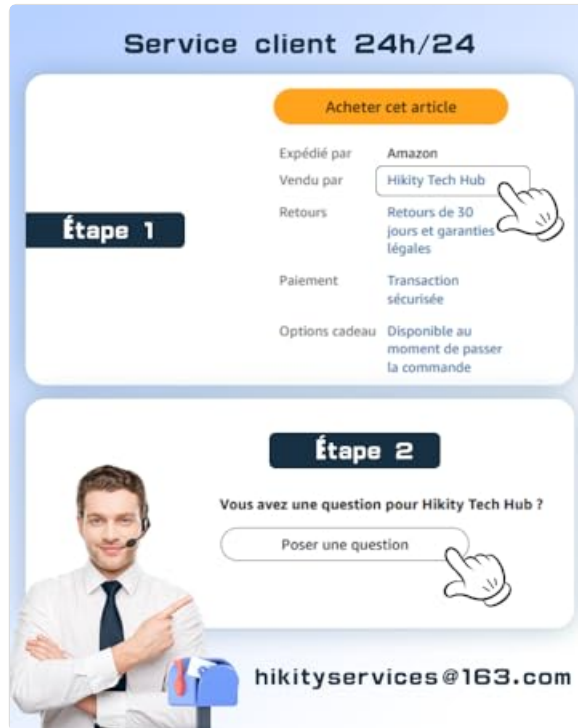


Image: Customer service interface showing two steps for support: initial inquiry and direct messaging with a professional representative, along with the email address for contact.