

[manuals.plus](#) /

› [kolegend](#) /

› [kolegend 1:14 RC Excavator \(Model k-104\) Instruction Manual](#)

kolegend k-104

kolegend 1:14 RC Excavator (Model k-104) Instruction Manual

Your guide to operating and maintaining your kolegend RC Excavator.

INTRODUCTION

Thank you for choosing the kolegend 1:14 RC Excavator. This remote-controlled construction vehicle is designed for realistic operation and versatile play with its 4-in-1 interchangeable attachments. This manual provides essential information for setup, operation, maintenance, and troubleshooting to ensure optimal performance and enjoyment.



This image displays the complete kolegend 1:14 RC Excavator package, including the main excavator unit, the 2.4GHz remote control, and the four distinct attachments: a standard metal digging bucket, a wood grabber, a metal drill bit, and a claw attachment. These accessories allow for versatile play and functionality.

PRODUCT FEATURES

- **4-in-1 Functionality:** Includes metal shovel, wood grabber, metal drill, and claw attachments for diverse tasks.
- **25-Channel Control:** Offers comprehensive control over various movements and functions.
- **3 Independent Motors:** Powerful motors on the digging arm enable realistic digging in any direction.
- **680-Degree Cab Rotation:** Provides unrestricted movement and maneuverability.
- **Durable Construction:** Built in 1:14 scale with high-quality ABS material and heavy-duty rubber crawler tires.
- **2.4GHz Transmitter:** Ensures a control distance of 100ft or more with anti-interference capabilities.
- **Sound and Light Effects:** Enhances the realistic operating experience.

4 IN 1 RC EXCAVATOR

25 CHANNEL



This image illustrates the key features of the kolegend RC Excavator, emphasizing its 4-in-1 attachment system and 25-channel remote control. Icons represent 2.4GHz frequency, 4-in-1 dress-up, powerful motor, metal gears, lights & sound, Li-ion battery, and remote control.

WHAT'S IN THE BOX

Upon opening your package, please ensure all the following components are present:

- kolegend 1:14 RC Excavator
- 2.4GHz Transmitter (Remote Control)
- 7.4V 1200mAh Rechargeable Battery for Excavator
- USB Charging Cable
- Metal Shovel Attachment
- Wood Grabber Attachment
- Metal Drill Bit Attachment
- Claw Attachment
- Screwdriver

- Product Manual (this document)

Note: 2 AA batteries for the transmitter are not included and must be purchased separately.

SETUP

1. Battery Installation

1. **Excavator Battery:** Locate the battery compartment on the excavator. Connect the provided 7.4V 1200mAh rechargeable battery and secure it in place.
2. **Remote Control Batteries:** Open the battery compartment on the back of the 2.4GHz transmitter. Insert 2 AA batteries (not included), ensuring correct polarity (+/-). Close the compartment.

2. Charging the Excavator Battery

1. Connect the 7.4V 1200mAh rechargeable battery to the USB charging cable.
2. Plug the USB charging cable into a standard USB power adapter (e.g., phone charger, computer USB port).
3. The charging indicator light on the USB cable will show the charging status. Refer to the cable's instructions for specific light indications (usually red for charging, off or green for fully charged).
4. Charging typically takes several hours. Do not overcharge the battery.

3. Attaching Tools

The kolegend RC Excavator comes with four interchangeable attachments. Follow these steps to replace them:

1. **Remove Current Attachment:** Locate the small bolts securing the current attachment to the digging arm. Use the provided screwdriver to push and remove these two bolts.
2. **Insert New Attachment:** Align the desired new attachment (metal bucket, wood grabber, metal drill, or claw) with the attachment point on the digging arm.
3. **Secure New Attachment:** Insert the two bolts through the attachment and the digging arm, then secure them tightly with the screwdriver.



This image provides a four-step visual guide for changing the excavator's attachments: 1. Push the bolt, 2. Remove two bolts, 3. Insert new attachment, 4. Connect two bolts. This illustrates the simple process for swapping tools.

OPERATING INSTRUCTIONS

1. Power On and Pairing

1. Ensure the excavator's battery is fully charged and installed.
2. Turn on the power switch on the excavator.
3. Turn on the power switch on the 2.4GHz transmitter.
4. The excavator and transmitter should automatically pair. If not, turn both off and on again, or refer to the transmitter's specific pairing instructions if provided.

2. Basic Movements

- **Forward/Backward:** Use the left joystick (or designated controls) to move the excavator forward or backward.
- **Turn Left/Right:** Use the left joystick (or designated controls) to steer the excavator left or right.
- **Cab Rotation:** Use the designated buttons or joystick on the transmitter to rotate the excavator's cab up to 680 degrees in either direction.



The image shows the excavator's arm mechanism, highlighting the screw drive for strong power in both large and small arm movements. An inset shows the 660-degree rotation capability of the excavator's cabin, allowing for

extensive maneuverability.

3. Arm and Attachment Controls

The 25-channel remote control allows for precise manipulation of the excavator's arm and attachments. Refer to the remote control diagram (if available) for specific button assignments.

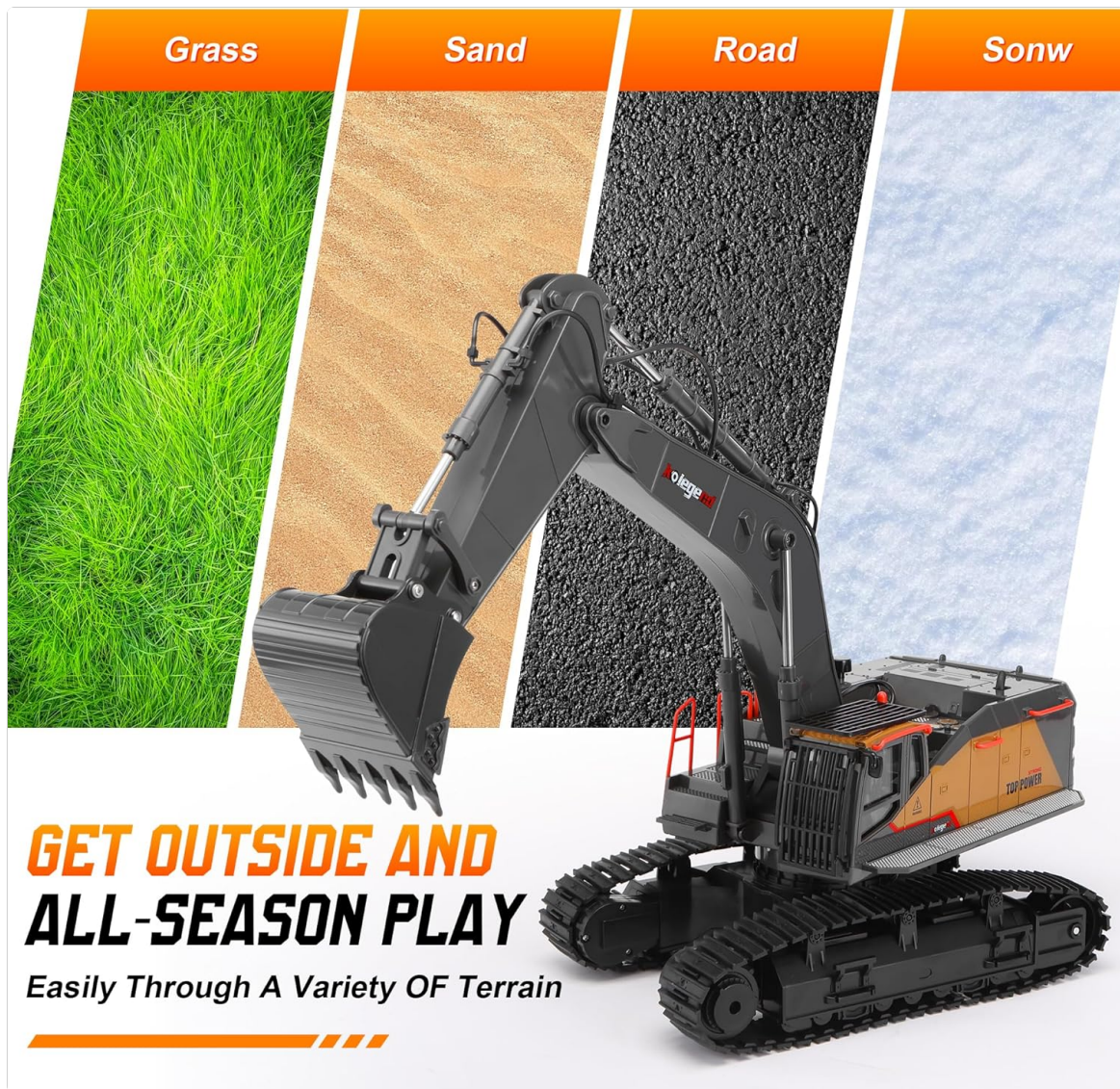
- **Boom Up/Down:** Controls the main arm's vertical movement.
- **Forearm In/Out:** Controls the middle section of the arm.
- **Bucket/Attachment Scoop/Dump:** Controls the movement of the attached tool (e.g., scooping with the bucket, opening/closing the grabber).
- **Sound/Light Effects:** Activate realistic engine sounds and working lights using dedicated buttons.



This image captures the excavator using its powerful arm to lift and support its own body, showcasing the robust construction and strength of the digging arm mechanism.

4. Operating on Various Terrains

The kolegend RC Excavator is designed for all-season play and can operate on various surfaces. Its double rubber tracks provide strong grip.



GET OUTSIDE AND ALL-SEASON PLAY

Easily Through A Variety OF Terrain

The excavator is depicted operating across diverse environments including grass, sand, paved roads, and snow, illustrating its robust design and ability to perform in different outdoor conditions throughout the year.

5. Video Demonstration

Your browser does not support the video tag.

This video provides a dynamic demonstration of the kolegend 1:14 RC Excavator. It highlights the excavator's sound and light effects, the functionality of its alloy bucket, 680-degree cabin rotation, digging actions in sand, and the strong grip of its double rubber tracks on various terrains.

MAINTENANCE

1. Cleaning

- After use, especially in dirt or sand, gently clean the excavator with a soft, dry cloth.
- Pay close attention to the crawler tracks and the arm mechanisms to remove any debris that could interfere with movement or damage gears.
- Avoid using water or harsh chemicals, as this can damage electronic components.

2. Battery Care

- Always fully charge the excavator's battery before first use and after each play session.
- Do not leave the battery charging unattended.
- Remove batteries from both the excavator and the remote control if storing for extended periods to prevent leakage.
- Dispose of old batteries responsibly according to local regulations.

3. Storage

- Store the excavator and its components in a cool, dry place, away from direct sunlight and extreme temperatures.
- Keep all attachments and the remote control together to prevent loss.

TROUBLESHOOTING

Problem	Possible Cause	Solution
Excavator does not respond to remote.	Low batteries in excavator or remote; Not paired; Power switches off.	Ensure both excavator and remote are powered on. Check and replace/charge batteries. Re-pair the remote and excavator.
Excavator moves slowly or lacks power.	Low excavator battery.	Recharge the excavator's 7.4V 1200mAh battery.
Arm or attachments are stuck/not moving.	Debris in gears; Attachment not properly secured.	Turn off the excavator and carefully inspect the arm mechanisms and gears for any lodged debris. Clean thoroughly. Ensure attachments are correctly installed and bolted.
Short operating time.	Battery not fully charged; Old battery.	Ensure the battery is fully charged before use. Consider replacing the battery if it's old and capacity has diminished.
Interference with other RC vehicles.	Operating too close to other 2.4GHz devices.	Move to an area with less interference or ensure other devices are off. The 2.4GHz system is designed to minimize interference, but extreme cases can occur.

SPECIFICATIONS

Feature	Detail
---------	--------

Feature	Detail
Model Number	k-104
Scale	1:14
Channels	25
Product Dimensions	20.08 x 7.6 x 12.6 inches
Item Weight	3.2 pounds
Excavator Battery	7.4V 1200mAh Rechargeable
Remote Control Batteries	2 AA batteries (not included)
Control Frequency	2.4GHz
Recommended Age	14 years and up
Manufacturer	kolegend

WARRANTY AND SUPPORT

kolegend is committed to providing high-quality products. For any issues not covered in this manual, or for warranty inquiries, please contact kolegend customer support through your retailer or the official brand channels. Please retain your proof of purchase for warranty claims.