

## Csasan T70

# Csasan T70 Smart Watch User Manual

Model: T70 | Brand: Csasan

### INTRODUCTION

This user manual provides comprehensive instructions for the Csasan T70 Smart Watch. It covers essential information regarding setup, operation, maintenance, and troubleshooting to ensure optimal performance and user experience. Please read this manual thoroughly before using your device.



Figure 1: Front view of the Csasan T70 Smart Watch.

## WHAT'S INCLUDED IN THE BOX

Upon opening the package, please verify that all components are present:

- Smart watch x 1
- Magnetic charger x 1
- User manual x 1

# WHAT'S INCLUDED IN THE BOX



Figure 2: Packaging contents of the Csasan T70 Smart Watch.

## SETUP

### 1. Initial Charging

Before first use, fully charge your smart watch. Connect the magnetic charger to the charging points on the back of the watch and plug the USB end into a compatible power source. A full charge typically takes approximately 2 hours.

# Long Battery Life



**30** Days  
Standby Time



**5-7** Days  
Average Usage



**2** Hours  
Charging Time



Figure 3: Charging the Csasan T70 Smart Watch.

## 2. App Download and Pairing

To unlock all features, download the **"Gloryfit"** app from your device's app store (compatible with Android 5.0+ and iOS 9.0+). Follow the in-app instructions to pair your watch.

1. Download the "Gloryfit" app from the App Store (iOS) or Google Play Store (Android).
2. Ensure your phone's Bluetooth is enabled.
3. Open the "Gloryfit" app and search for your device (T70, identified by ID-XXXX).
4. Confirm the pairing request on both your phone and the watch.

A: For iOS 13.0 and above models and Android 5.0 and above phones only need one-time connection, please follow below steps:

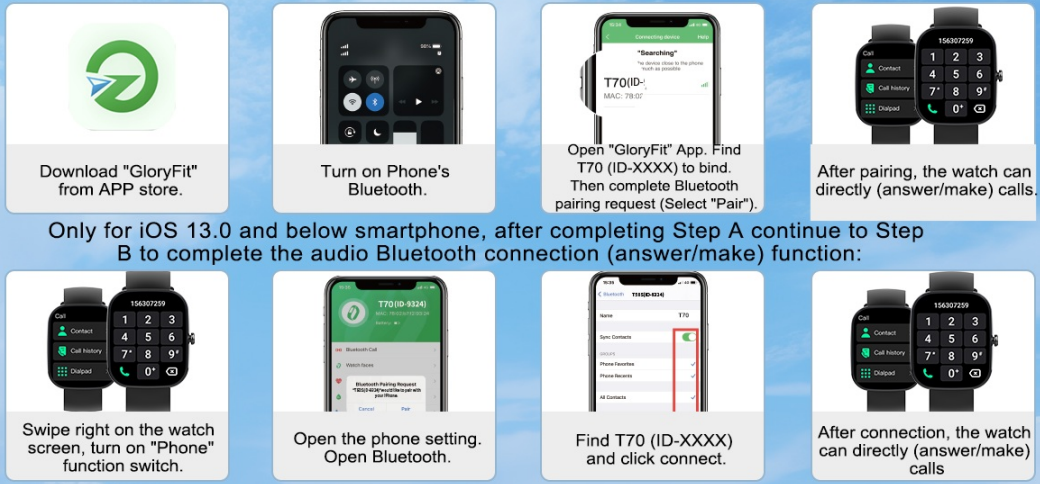


Figure 4: Smart Watch pairing process with the Gloryfit app.

### 3. Bluetooth Call Function Setup (for iOS 13.0 and below)

For older iOS versions, an additional step is required to enable the call function:

1. After initial pairing, swipe right on the watch screen to access the "Phone" function switch and turn it on.
2. Go to your phone's Bluetooth settings.
3. Find "T70 (ID-XXXX)" in the list of available devices and click to connect.
4. Once connected, you can answer and make calls directly from your watch.

## OPERATING INSTRUCTIONS

### 1. Display and Customization

The Csasan T70 features a 1.91-inch HD full touch display with adjustable brightness. You can wake the screen by raising your wrist. Personalize your watch face by choosing from over 100 built-in options in the Gloryfit app, or use your own photos.





Figure 5: Watch face customization options.

## 2. Call and Message Functions

With the integrated speaker and microphone, you can answer and make Bluetooth calls directly from your wrist. The watch also supports full-network message push notifications from various social media and communication apps (e.g., Instagram, YouTube, Messenger, Gmail, Snapchat, Facebook, Twitter, WhatsApp). *Note: The smart watch cannot reply to messages.*

# Answer/Make Bluetooth calls

Connect to your cell phone via Bluetooth, so your watch can also view recent callogs and set frequent contacts



Figure 6: Bluetooth call functionality.

# Smart Notification

Get quick notice to all recent texts, messages and phone calls



Figure 7: Smart notification display.

### 3. Sports Modes

The fitness tracker offers over 110 sports modes, including running, cycling, swimming, and general fitness activities. It tracks your steps, calories burned, and distance covered, helping you monitor your progress.



# 112+ Sports Modes

Stay on top of your health with 24/7 real-time monitoring



22531 Steps



1086Kcal



8.35 Km



**IP68 Waterproof**

Figure 8: Overview of sports modes and activity tracking.

## 4. Health Monitoring

Equipped with a high-performance sensor, the watch provides 24/7 heart rate monitoring and automatic sleep tracking. It helps you understand your heart rate changes and sleep patterns (awake, light, and deep sleep). *Note: The data is for reference only and should not be used for medical diagnosis.*

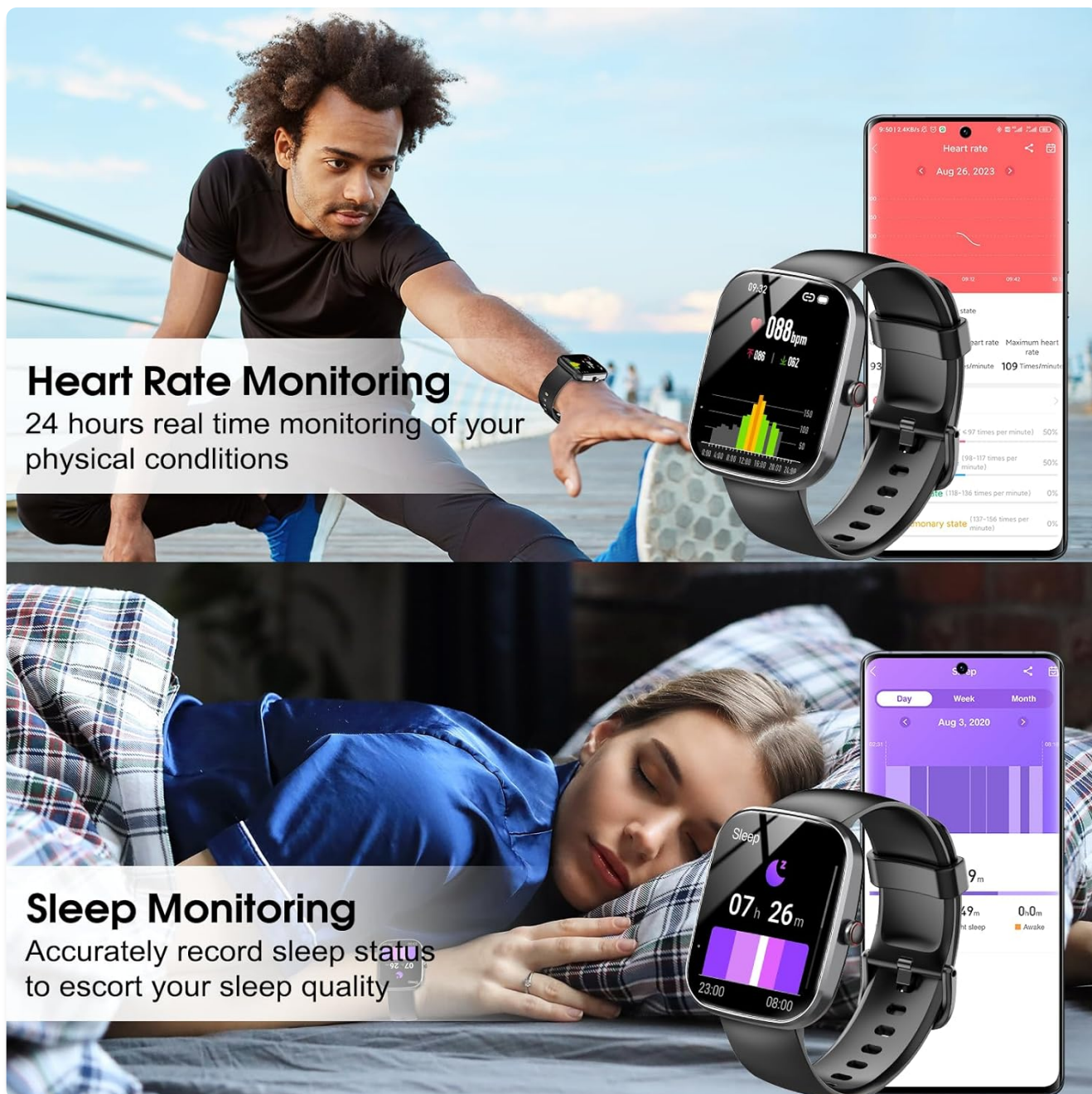


Figure 9: Heart rate and sleep monitoring features.

## 5. Other Functions

The Csasan T70 Smart Watch includes a variety of useful functions:

- **Weather Forecast:** Get real-time weather updates.
- **Music Control:** Control music playback on your phone directly from the watch.
- **Sedentary Reminder:** Alerts you to move after periods of inactivity.
- **Stopwatch & Timer:** For precise timekeeping during activities.
- **Alarm Clock:** Set alarms for daily reminders.
- **Female Cycle Tracking:** Monitor menstrual cycles.
- **Find Phone:** Helps locate your paired smartphone.
- **Camera Remote Control:** Use your watch as a remote shutter for your phone's camera.



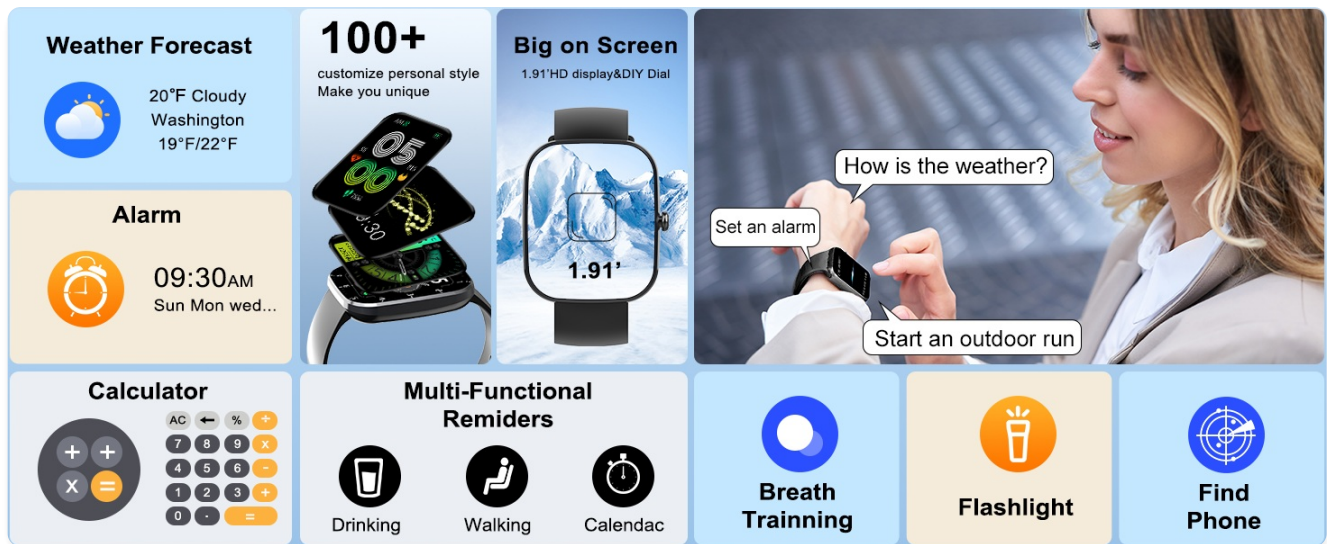


Figure 10: Multi-functional features of the smart watch.

## MAINTENANCE

### 1. Water Resistance

The Csasan T70 Smart Watch is IP68 waterproof, making it resistant to sweat and rain. It can be used during daily activities such as hand washing or exercising in light rain. *Important: Do not use the watch in hot water, saunas, or for prolonged immersion, as this may affect its waterproof integrity and lifespan.*

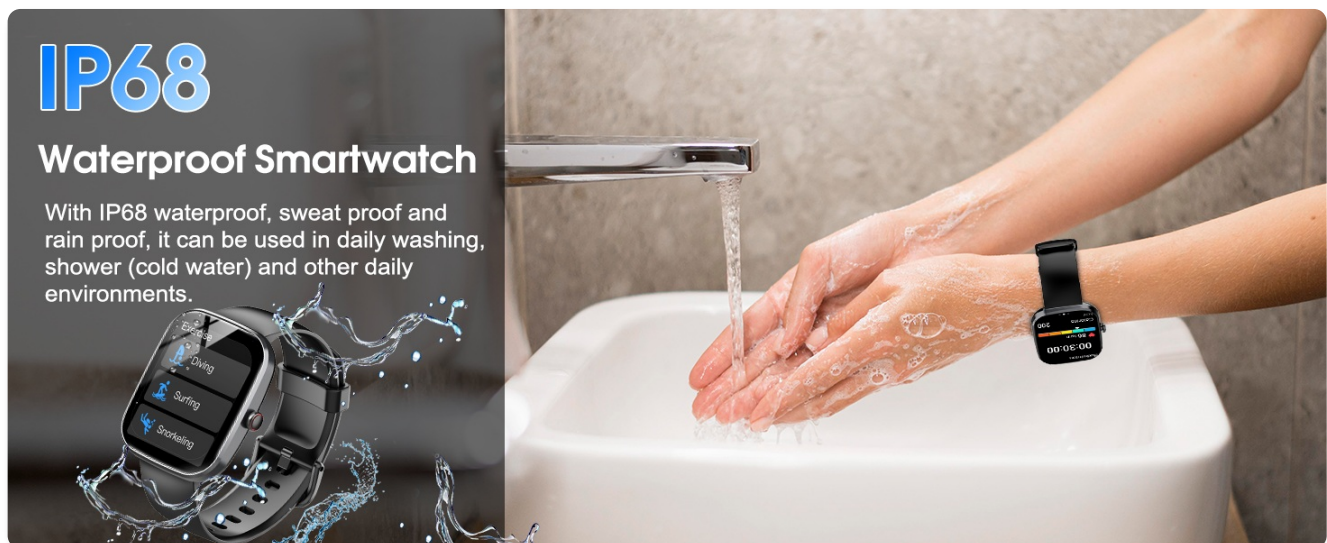


Figure 11: IP68 Waterproof feature.

### 2. Cleaning

Regularly clean your watch and strap with a soft, dry cloth. If necessary, use a slightly damp cloth and then dry thoroughly. Avoid using harsh chemicals or abrasive materials.

### 3. Battery Care

To prolong battery life, avoid extreme temperatures. Charge the watch fully before long periods of inactivity. The watch offers a standby time of up to 30 days and an average usage time of 5-7 days.

## TROUBLESHOOTING

If you encounter issues with your Csasan T70 Smart Watch, please refer to the following common solutions:

- **Watch not turning on:** Ensure the watch is fully charged. Connect it to the charger and wait a few minutes before attempting to power it on.
- **Bluetooth connection issues:**
  - Ensure Bluetooth is enabled on both your phone and the watch.
  - Make sure the watch is within the Bluetooth range of your phone.
  - Restart both the watch and your phone.
  - Forget the device in your phone's Bluetooth settings and re-pair it through the Gloryfit app.
- **Notifications not appearing:**
  - Check app notification permissions in your phone's settings and within the Gloryfit app.
  - Ensure the Gloryfit app is running in the background.
- **Inaccurate health data:** Ensure the watch is worn snugly on your wrist, not too tight or too loose. Clean the sensor on the back of the watch.
- **Screen unresponsive:** Try restarting the watch by pressing and holding the side button. If unresponsive, allow the battery to drain completely and then recharge.

If the issue persists, please contact customer support for further assistance.

## SPECIFICATIONS

Feature	Detail
Model Name	T70
Brand	Csasan
Screen Size	1.91 Inches
Shape	Rectangular
GPS	No GPS
Battery Cell Composition	Lithium Polymer
Wireless Communication Standard	Bluetooth
Connectivity Technology	Bluetooth
Operating System	Android (Compatible with Android 5.0+ and iOS 9.0+)
Item Weight	3.2 ounces
Package Dimensions	6.85 x 3.74 x 0.75 inches

## WARRANTY AND SUPPORT

Csasan is committed to providing excellent customer service and product quality.

- **Return Policy:** 30 days no-reason return policy.
- **Warranty:** 2 years free replacement for manufacturing defects.
- **Customer Support:** Lifetime support and satisfied solutions. Quick service available via email within 24 hours.








Figure 12: Csasan customer service and warranty information.

© 2025 Csasan. All rights reserved.

## Related Documents - T70

	<p><a href="#">T70 Smart Sport Watch User Manual</a></p> <p>This user manual provides instructions for the T70 Smart Sport Watch, covering setup, features, app connection, and troubleshooting. Learn how to use your smartwatch for fitness tracking, notifications, and calls.</p>
	<p><a href="#">V90 True Wireless Stereo Earphones User Guide</a></p> <p>Comprehensive user guide for the Csasan V90 True Wireless Stereo Earphones, covering setup, functions, charging, troubleshooting, and warranty information.</p>
	<p><a href="#">T70 Smartwatch Product Specification</a></p> <p>Detailed product specifications for the T70 smartwatch, highlighting its 1.72-inch HD display, Bluetooth calling, comprehensive health monitoring (HR, SpO2, blood pressure), various sport modes, and compatibility with both iOS and Android devices via the Dafit app. Includes technical specifications like chipset, memory, battery, and dimensions.</p>



[T70 Smartwatch Specification Sheet](#)

Detailed specifications for the T70 smartwatch, including features like dual-mode Bluetooth calling, health monitoring (heart rate, blood oxygen, sleep), sports modes, and app compatibility. Covers product parameters, chip, battery, screen, and available languages.



[Smart Sport Watch T70 User Manual and Setup Guide](#)

Comprehensive operating instructions for the Smart Sport Watch T70, covering setup, app connection with GloryFit, feature descriptions, charging, troubleshooting, and compliance information for optimal use.