

## MYTOL H21K3

# MYTOL 7.2A Electric Drywall Sander H21K3 User Manual

## 1. INTRODUCTION

This manual provides essential information for the safe and effective operation, maintenance, and troubleshooting of your MYTOL 7.2A Electric Drywall Sander, model H21K3. Please read this manual thoroughly before using the tool to ensure proper function and to prevent injury or damage.

## 2. SAFETY INSTRUCTIONS

**WARNING: Read all safety warnings, instructions, illustrations, and specifications provided with this power tool. Failure to follow all instructions listed below may result in electric shock, fire, and/or serious injury.**

- Always wear appropriate personal protective equipment, including safety glasses, dust mask, and hearing protection.
- Ensure the work area is well-ventilated and free from flammable materials.
- Keep children and bystanders away while operating a power tool.
- Do not operate power tools in explosive atmospheres, such as in the presence of flammable liquids, gases, or dust.
- Avoid accidental starting. Ensure the switch is in the off-position before connecting to power, picking up, or carrying the tool.
- Do not overreach. Keep proper footing and balance at all times.
- Disconnect the plug from the power source before making any adjustments, changing accessories, or storing power tools.
- Use the correct power tool for your application. Do not force the tool.
- Maintain power tools. Check for misalignment or binding of moving parts, breakage of parts, and any other condition that may affect the power tool's operation.

### 3. PACKAGE CONTENTS

---

Verify that all items listed below are present in your package:

- 1x MYTOL Electric Drywall Sander
- 1x Suction Hose
- 1x Extension Tube
- 1x Dust Collection Bag
- 1x Carry Bag
- 1x Screwdriver
- 1x Hex Wrench
- 2x Carbon Brushes
- 1x Connection Adapter for Vacuum Cleaner
- 1x Pair of Gloves
- 1x Safety Glasses
- 9x Sanding Papers (various grits)
- 3x Grid Sand Papers
- 1x User Manual



Figure 3.1: MYTOL Drywall Sander and all included accessories.

## 4. PRODUCT OVERVIEW

Familiarize yourself with the main components of the MYTOL Drywall Sander:



Figure 4.1: Key components include the Rotary Shroud, On/Off Switch, Speed Switch, Foldable Part, Dust Guide Pipe, Copper Motor, and LED Light.

- **Rotary Shroud:** Protects the sanding disc and aids in dust collection.
- **On/Off Switch:** Controls the power to the sander.
- **Speed Switch:** Adjusts the rotational speed of the sanding disc.
- **Foldable Part:** Allows the sander to be folded for compact storage and transport.
- **Dust Guide Pipe:** Directs dust from the sanding head to the collection system.
- **Copper Motor:** Provides power for sanding operations.
- **LED Light:** Illuminates the work surface for improved visibility in dim conditions.

## 5. SETUP

---

### 5.1 Assembling the Handle and Dust Collection System

1. Unfold the sander body until it locks into place.
2. Attach the extension tube to the main handle if additional length is required.
3. Connect the suction hose to the dust guide pipe on the sanding head and to the dust collection bag or an external vacuum cleaner adapter. Ensure all connections are secure to maximize dust collection efficiency.

### 5.2 Attaching Sanding Discs

The sander uses hook-and-loop sanding discs. To attach a disc:

1. Ensure the sander is unplugged.
2. Align the holes on the sanding disc with the holes on the sanding pad.
3. Press the disc firmly onto the pad to secure it.

## 6. OPERATING INSTRUCTIONS

---

### 6.1 Powering On/Off

Plug the sander into a 120V AC power outlet. Use the On/Off switch located on the handle to power the tool on or off.

### 6.2 Adjusting Speed

The sander features 6 adjustable speeds, ranging from 900 to 1800 RPM. Use the speed switch (plus/minus buttons) to select the appropriate speed for your sanding task. Lower speeds are suitable for fine finishing, while higher speeds are for aggressive material removal.



Figure 6.1: Digital speed control display.

### 6.3 Using the LED Light

The integrated LED light strip illuminates the work surface, providing clear visibility, especially in poorly lit areas. This feature helps identify imperfections and ensures consistent sanding results.

### 6.4 Adjusting Handle Length

The telescopic handle can be adjusted from 4.8 feet to 5.6 feet to suit different working heights and user

preferences. Unlock the handle adjustment mechanism, extend or retract to the desired length, and then lock it securely.

## ADJUSTABLE LENGTH EASY TO OPERATE

Adjustable length suits your needs for different sanding heights



Figure 6.2: Adjustable handle length for various sanding heights.

### 6.5 Automatic Dust Collection System

The sander features an automatic dust vacuum system with a ring cleaning brush and flexible dust collection hose. This system minimizes airborne dust, creating a cleaner and healthier working environment. Ensure the dust collection bag is properly attached and emptied regularly.



Figure 6.3: Vertical suction design for effective dust removal.

## 6.6 Sanding Techniques

- **Removable Chassis Edge:** The sanding head features a detachable edge, allowing you to sand closer to corners and edges without damaging adjacent surfaces.
- **Multi-Angle Pivoting Head:** The 90° adjustable pivoting head allows for easy operation on both walls and ceilings, adapting to various angles. An angle fixing spring helps maintain the desired position.
- Apply even, moderate pressure. Let the sander do the work.
- Move the sander in smooth, overlapping passes to achieve a uniform finish.

# REMOVABLE CHASSIS EDGE&MULTI ANGLE PIVOTING HEAD



Figure 6.4: Removable chassis edge and multi-angle pivoting head for versatile sanding.

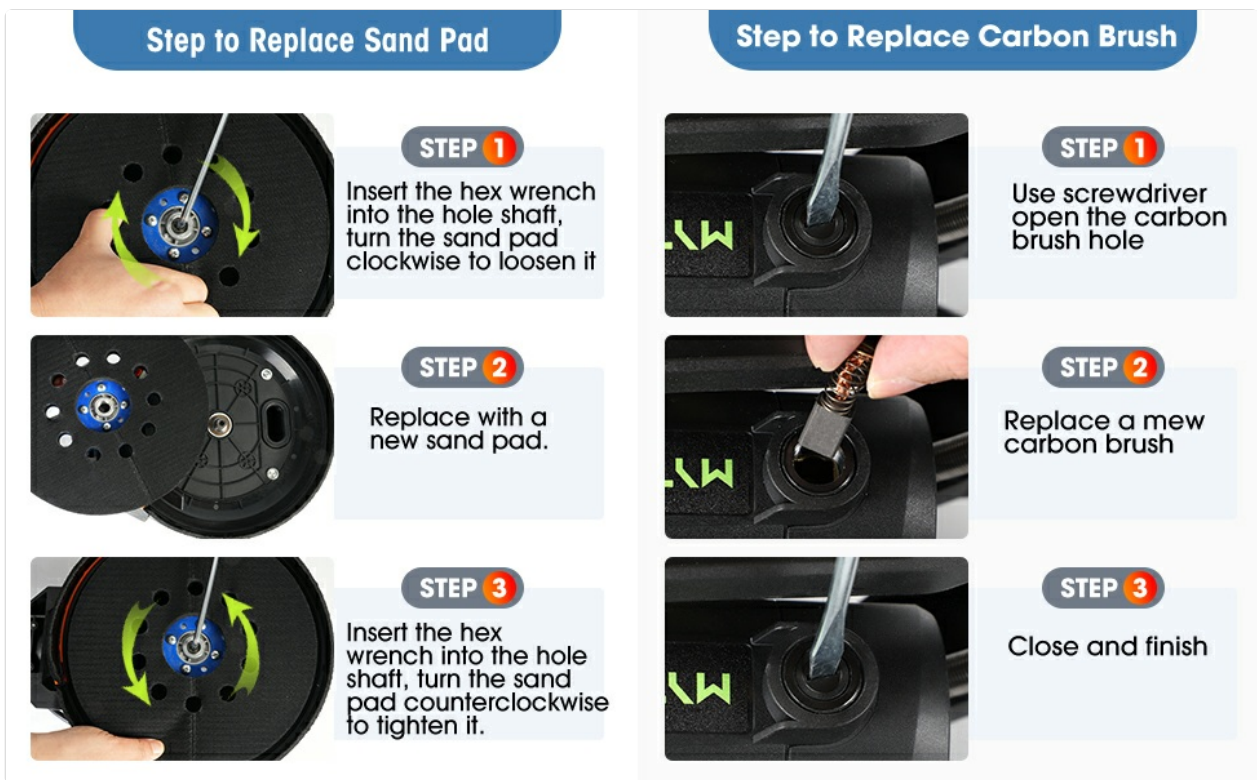


Figure 6.5: Sander in use for wall and ceiling applications.

## 7. MAINTENANCE

Regular maintenance ensures the longevity and optimal performance of your drywall sander.

### 7.1 Replacing Sanding Pads

Worn sanding pads can reduce sanding efficiency and quality. Replace them as needed.

1. Ensure the sander is unplugged.
2. Insert the hex wrench into the hole shaft and turn the sand pad clockwise to loosen it.
3. Remove the old sand pad and replace it with a new one.
4. Insert the hex wrench into the hole shaft and turn the sand pad counter-clockwise to tighten it securely.

### 7.2 Replacing Carbon Brushes

Carbon brushes are wear items and need periodic replacement to maintain motor performance.

1. Ensure the sander is unplugged.
2. Use a screwdriver to open the carbon brush hole cover.
3. Remove the old carbon brush and insert a new one.
4. Close the carbon brush hole cover and secure it.

#100      #180      #240      180#

Hook And Loop Base For Easy To Replace Different Specifications Sandpaper

**GRID SANDPAPER SANDING MORE EFFICIENT**

**GRID SANDPAPER**      **NORMAL SANDPAPER**

✓ Stronger suction for dust removal	<b>CLEANING SUCTION</b>	✗ Low suction
✓ Three times longer than regular sandpaper	<b>DURATION OF USE</b>	✗ Use time short
✓ Less clogged and more efficient	<b>GRINDING EFFICIENCY</b>	✗ Easy to clog and low efficiency

Figure 7.1: Step-by-step guide for replacing the sand pad and carbon brush.

### 7.3 Cleaning the Dust Collection System

Regularly empty the dust collection bag and clean the suction hose to prevent blockages and maintain optimal dust removal performance.

## 8. TROUBLESHOOTING

If you encounter issues with your MYTOL Drywall Sander, refer to the following common problems and solutions:

Problem	Possible Cause	Solution
Sander does not start	No power supply; Faulty switch; Worn carbon brushes	Check power connection; Test switch; Replace carbon brushes
Poor dust collection	Dust bag full; Hose clogged; Loose connections; Worn brush skirt	Empty dust bag; Clear hose; Secure connections; Replace brush skirt
Excessive vibration/noise	Damaged sanding pad; Loose components; Motor issue	Replace sanding pad; Check and tighten components; Contact support
Sanding disc not rotating properly	Disc improperly attached; Motor issue; Gear damage	Re-attach disc; Contact support

If the problem persists after attempting these solutions, please contact MYTOL customer support.

## 9. SPECIFICATIONS

Feature	Specification
---------	---------------

Feature	Specification
Brand	MYTOL
Model Number	H21K3
Power Source	Corded Electric
Voltage	120 Volts (AC)
AC Adapter Current	7.2 Amps
Maximum Rotational Speed	1800 RPM
Adjustable Speeds	6
Grit Type	Medium
Grit Number (Included)	180
Item Weight	15.89 pounds
Package Dimensions	27.3 x 11.5 x 10 inches
Color	Grey
Included Features	Vacuum Dust Collection, LED Light, Extendable Handle, Foldable Design, Removable Chassis Edge, Pivoting Head

## 10. WARRANTY AND SUPPORT

For any questions or assistance, please refer to the contact information provided on the last page of your physical manual or contact MYTOL customer service directly. Please retain your proof of purchase for warranty claims.