

[Manuals.plus](#) /

> [VGR](#) /

> VGR V-401 Professional Hair Dryer User Manual

VGR V-401

VGR V-401 Professional Hair Dryer User Manual

Model: V-401 | Brand: VGR

INTRODUCTION

Enjoy professional hair styling with the VGR V-401 hair dryer, equipped with an advanced BLDC motor capable of delivering amazing speeds ranging from 70,000 to 110,000 RPM. This advanced styling tool gives you precise control with 40 levels of speed and temperature settings, ranging from 60 to 100 degrees Celsius, allowing you to customize your styling experience. The elegant design features an easy-to-use LED display and comfortable control buttons, including a cool air button to set the hairstyle. The versatile magnetic attachment system includes three essential accessories: a concentrator nozzle, a styling concentrator, and a diffuser, to meet various hair styling needs. The removable rear cover ensures easy maintenance, while the comfortable handle provides a comfortable grip during use. This high-performance dryer delivers salon-quality results with exceptional efficiency.

Key Features:

- **Powerful Motor:** High-speed BLDC motor provides exceptional performance with 70,000-110,000 RPM for professional drying and styling results.
- **Precise Control:** 40 levels of speed and temperature control (60°C - 100°C) with an LED display for a customized styling experience.
- **Versatile Attachments:** Includes three magnetic attachments - a concentrator nozzle, a styling concentrator, and a diffuser to meet various hair styling needs.
- **Cool Shot Technology:** A dedicated cool air button helps set and fix your hairstyle for long-lasting results.
- **Easy Maintenance:** Detachable rear cover design allows for easy cleaning and maintenance to ensure optimal performance.

SAFETY INFORMATION

Please read all instructions carefully before using this appliance. Keep this manual for future reference.

- Do not use this appliance near water, in bathtubs, showers, basins, or other vessels containing water.
- Always unplug the appliance immediately after use.

- Do not place or store the appliance where it can fall or be pulled into a tub or sink.
- Do not reach for an appliance that has fallen into water. Unplug it immediately.
- Keep the cord away from heated surfaces.
- Never block the air openings of the appliance or place it on a soft surface, such as a bed or couch, where the air openings may be blocked.
- This appliance is not intended for use by persons (including children) with reduced physical, sensory or mental capabilities, or lack of experience and knowledge, unless they have been given supervision or instruction concerning use of the appliance by a person responsible for their safety.
- Children should be supervised to ensure that they do not play with the appliance.
- Do not operate any appliance with a damaged cord or plug, or after the appliance malfunctions or has been dropped or damaged in any manner.
- For household use only.

PACKAGE CONTENTS

- VGR V-401 Professional Hair Dryer
- Concentrator Nozzle (Magnetic)
- Styling Concentrator (Magnetic)
- Diffuser (Magnetic)
- User Manual



Image: The VGR V-401 hair dryer shown with its included magnetic attachments: a standard concentrator, a styling concentrator, and a diffuser.

PRODUCT OVERVIEW

Familiarize yourself with the components of your VGR V-401 Professional Hair Dryer.

HIGH-SPEED 70000-110000 RPM

BARBER SERIES

MODEL: V-401

VGR STEPLESS PRO HD1



Image: A detailed diagram highlighting the various parts of the VGR V-401 hair dryer, including control buttons, display, and attachment points.

- 1. Cool Shot Button:** Provides a burst of cool air to set your style.
- 2. Speed Rotary Knob:** Adjusts airflow speed (40 levels, 70,000-110,000 RPM).
- 3. Temperature Rotary Knob:** Adjusts heat level (40 levels, 60°C-100°C).
- 4. LED Display:** Shows current speed and temperature settings.
- 5. ON/OFF Switch:** Powers the device on or off.
- 6. Detachable Rear Cover:** For easy cleaning of the air filter.
- 7. Magnetic Attachments:** Concentrator, Styling Concentrator, and Diffuser.

SETUP

- 1. Unpack:** Carefully remove the hair dryer and all accessories from the packaging.
- 2. Inspect:** Check the appliance for any signs of damage. Do not use if damaged.

3. **Attach Nozzle:** Select the desired magnetic attachment (concentrator, styling concentrator, or diffuser) and simply place it onto the front of the dryer. The magnetic system will secure it in place.
4. **Connect to Power:** Plug the power cord into a suitable electrical outlet. Ensure the voltage matches the appliance's requirements (check specifications).

OPERATING INSTRUCTIONS

Power On/Off:

- To turn on the hair dryer, slide the **ON/OFF switch** to the 'ON' position.
- To turn off the hair dryer, slide the **ON/OFF switch** to the 'OFF' position.

Adjusting Speed and Temperature:

The V-401 offers precise control over airflow and heat.

- Use the **Speed Rotary Knob** to select one of the 40 available airflow speeds. Rotate clockwise to increase speed, counter-clockwise to decrease.
- Use the **Temperature Rotary Knob** to select one of the 40 available heat levels, ranging from 60°C to 100°C. Rotate clockwise to increase heat, counter-clockwise to decrease.
- The **LED Display** will show the current speed and temperature settings.

SPEED & TEMPERATURE SETTING

Instant Control Over **Speed & Heat**



COOL SHOT BUTTON

Fresh Finish with **Cold Burst**



CORDED

No Charging Just Style



LED DISPLAY

Know **Heat** Style Smart



110000 RPM

High Speed **BLDC** Motor



Image: Illustration of the speed and temperature controls, highlighting the 40 levels for each setting and the LED display.

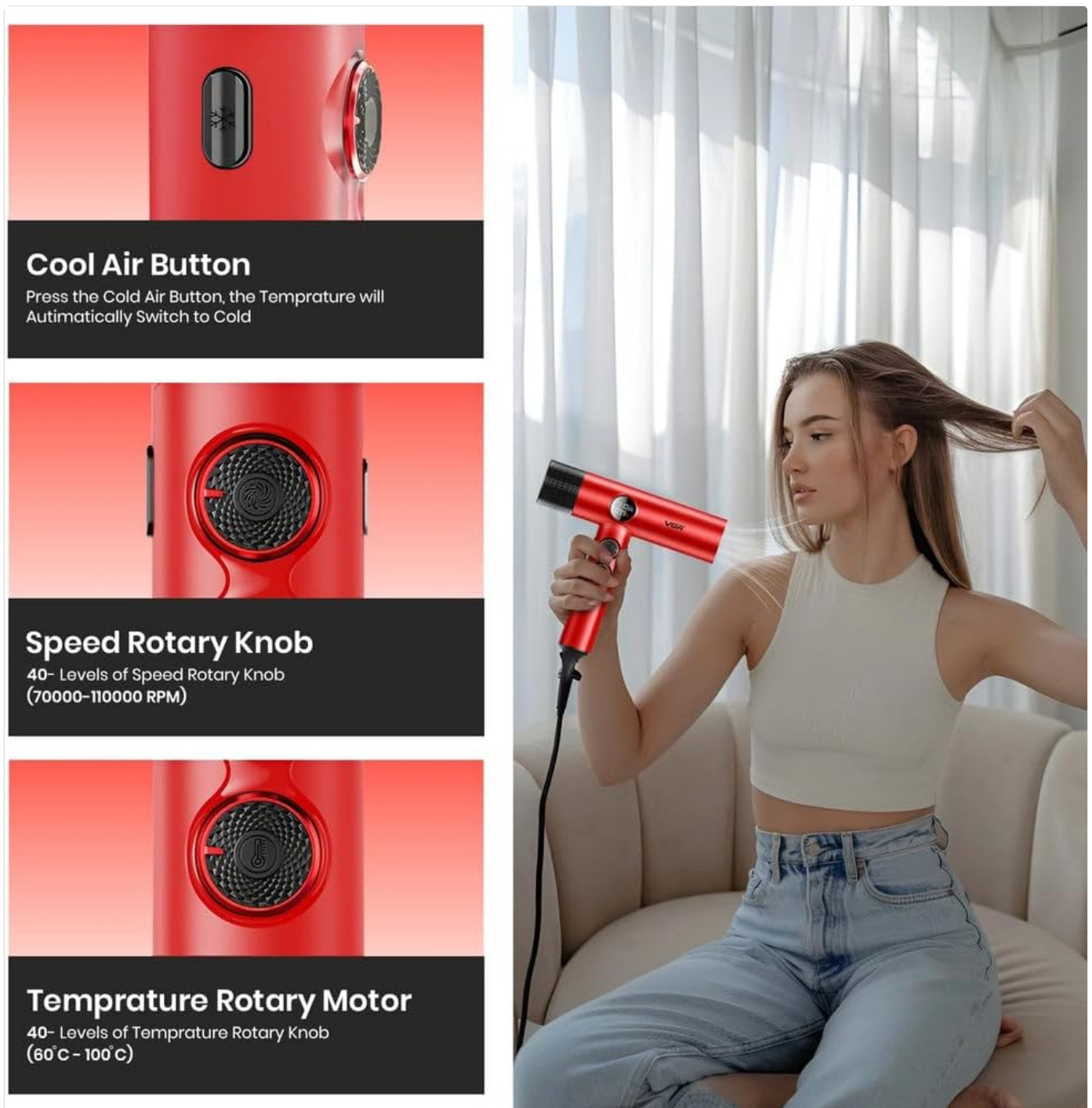


Image: Demonstrates the location and function of the Cool Air Button, Speed Rotary Knob, and Temperature Rotary Motor on the hair dryer.

Using the Cool Shot Button:

- After styling your hair with heat, press and hold the **Cool Shot Button** to deliver a burst of cool air. This helps to rapidly cool the hair, setting the style and adding shine.

Using Attachments:

- **Concentrator Nozzle:** For precise styling and smoothing. Directs airflow to specific sections of hair.
- **Styling Concentrator:** Provides a more focused airflow for detailed styling and straightening.
- **Diffuser:** Ideal for enhancing natural curls and waves, adding volume, and reducing frizz. Use on low speed and low heat settings.

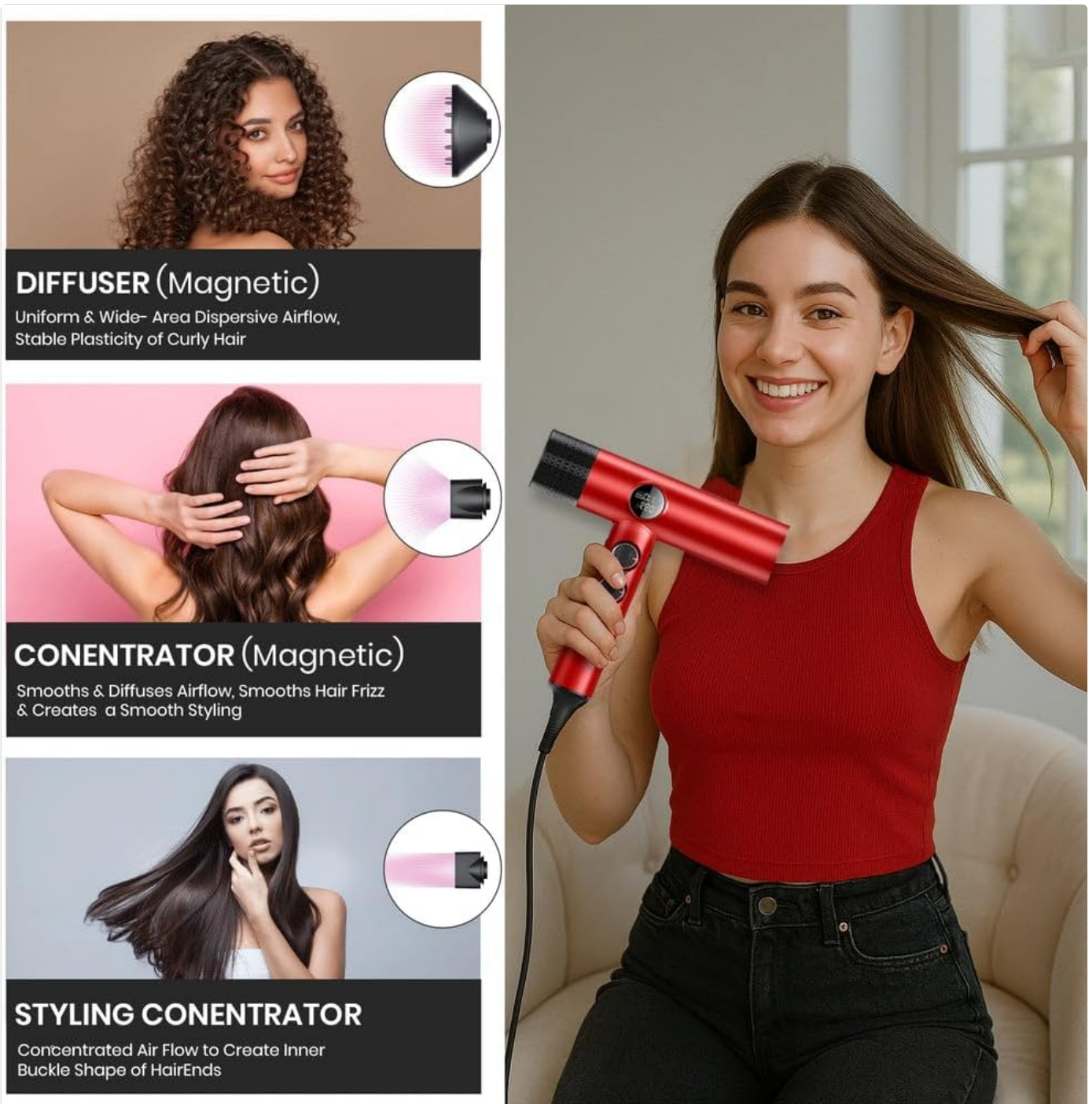


Image: Visual guide demonstrating how to use the diffuser, concentrator, and styling concentrator attachments for various hair types and desired results.

MAINTENANCE

Regular cleaning ensures optimal performance and extends the life of your hair dryer.

1. **Unplug:** Always unplug the hair dryer from the power outlet before cleaning.
2. **Clean Exterior:** Wipe the exterior of the hair dryer with a soft, damp cloth. Do not use abrasive cleaners or solvents.
3. **Clean Air Filter (Detachable Rear Cover):**
 - Gently twist or pull off the detachable rear cover to access the air filter.
 - Use a soft brush or a dry cloth to remove any accumulated dust, lint, or hair from the filter.
 - Ensure the filter is completely clean and dry before reattaching the cover.
 - Snap or twist the rear cover back into place securely.

BLDC MOTOR 110000 RPM

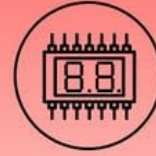
Power Meets Precision with 110,000 RPM of Pure Performance



Cool Shot Button



2 Heat Speed Settings



LED Display



Image: Instructions on how to remove the dustproof cover for cleaning, illustrating the process of isolating dust and facilitating maintenance.

Storage: When not in use, store the hair dryer in a cool, dry place, away from direct sunlight and moisture. Do not wrap the cord tightly around the appliance, as this can damage the cord.

TROUBLESHOOTING

If you encounter any issues with your VGR V-401 hair dryer, please refer to the following common problems and solutions:

Problem	Possible Cause	Solution
Hair dryer does not turn on.	No power supply; appliance not plugged in; power switch off; damaged cord/plug.	Ensure the power cord is securely plugged into a working outlet. Check if the ON/OFF switch is in the 'ON' position. Inspect the cord and plug for damage. If damaged, do not use and contact support.

Problem	Possible Cause	Solution
Weak airflow or overheating.	Blocked air intake filter; motor overheating protection activated.	Unplug the dryer and allow it to cool down. Clean the detachable rear air filter as described in the Maintenance section. Ensure air vents are not blocked during use.
Attachments do not stay on.	Attachments not properly aligned; magnetic connection issues.	Ensure the attachments are correctly aligned with the magnetic connection points on the dryer. Clean any debris from the magnetic surfaces.
LED display not working.	Appliance not powered on; internal malfunction.	Ensure the dryer is powered on. If the dryer functions but the display does not, contact customer support.

SPECIFICATIONS

Feature	Detail
Model Name	V-401
Brand	VGR
Motor Type	BLDC Motor
Motor Speed	70,000 - 110,000 RPM
Power Output	1400 Watts
Speed Settings	40 Levels
Temperature Settings	40 Levels (60°C - 100°C)
Display	LED Display
Special Features	Cool Shot Button, Magnetic Attachments, Detachable Rear Cover
Included Components	Hair Dryer, Concentrator Nozzle, Styling Concentrator, Diffuser
Color	Red
Material	Plastic
Product Dimensions	8.5 x 40 x 8.5 cm
Product Weight	850 grams
Power Source	Corded Electric
Recommended Use	Hair Styling
Hair Type	All

WARRANTY AND SUPPORT

For warranty information and customer support, please refer to the warranty card included with your product or visit the official VGR website. Keep your purchase receipt as proof of purchase.

If you require further assistance or have questions not covered in this manual, please contact VGR customer service.

