

CITLLA E510

CITLLA PRO MAX E510 Wireless Bluetooth Mouse User Manual

Model: E510 | Brand: CITLLA

1. PRODUCT OVERVIEW

The CITLLA PRO MAX E510 is an ergonomic wireless mouse designed for comfort and efficiency across multiple devices. It features dual Bluetooth and 2.4G wireless connectivity, adjustable DPI settings, and a unique smart flying scroll wheel with a side thumb wheel for enhanced navigation.



Image: The CITLLA PRO MAX E510 Wireless Bluetooth Mouse in white, showcasing its ergonomic design and multiple buttons.

2. SETUP INSTRUCTIONS

2.1 Initial Charging

Before first use, fully charge the mouse using the provided USB-C cable. The charging port is located at the front of the mouse. A full charge can last up to 60 days. The mouse features an auto-sleep mode after 15 minutes of inactivity to conserve battery life.

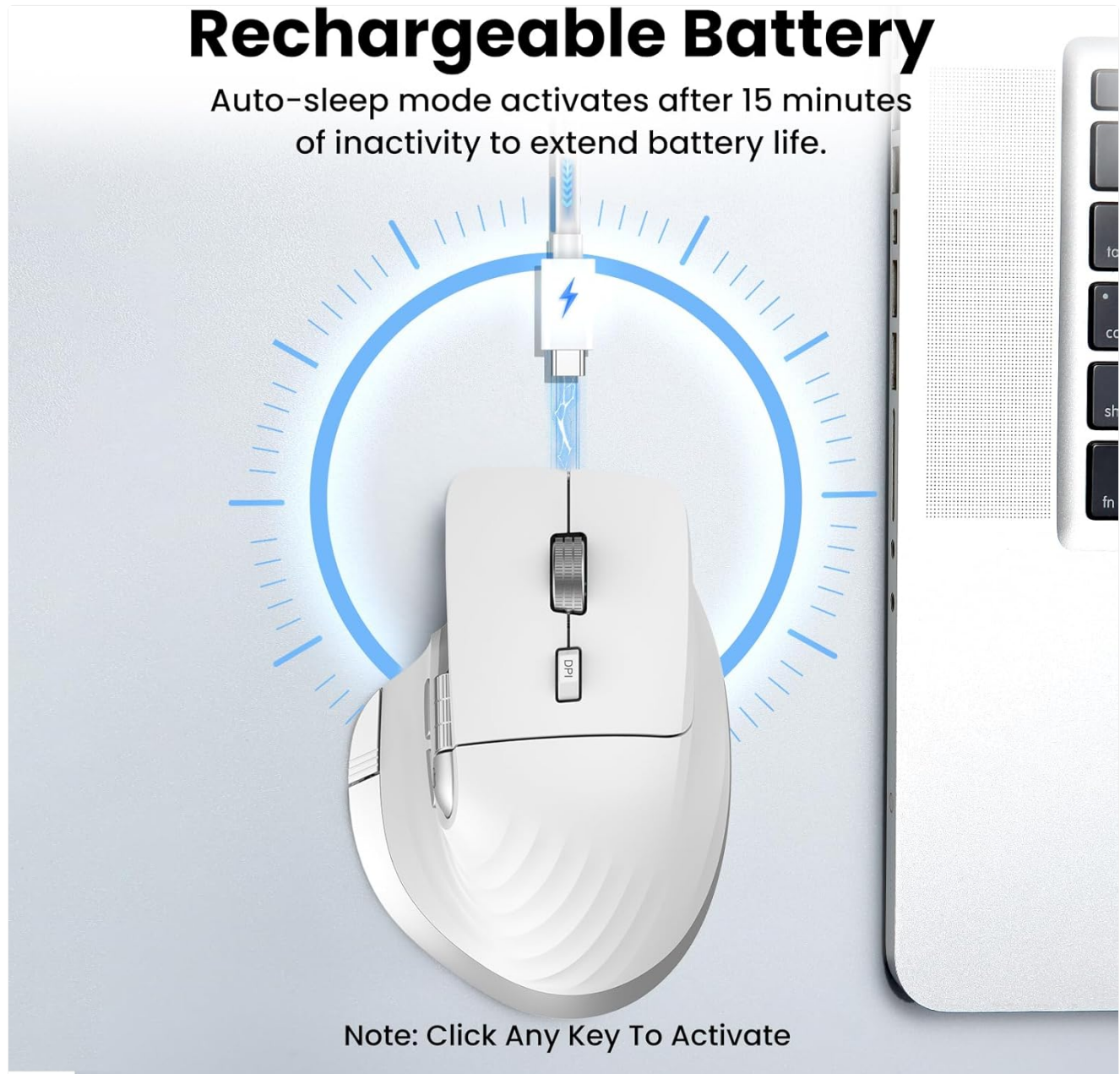


Image: The mouse connected to a USB-C charging cable, illustrating the rechargeable battery feature.

2.2 Connecting to Devices

The mouse supports connection to up to three devices via 2.4G wireless (USB receiver) and two Bluetooth channels (Bluetooth 1, Bluetooth 2).

1. 2.4G Wireless Connection:

- Locate the USB receiver stored in the compartment on the underside of the mouse.
- Plug the USB receiver into an available USB port on your computer.
- Turn on the mouse using the On/Off switch located on the bottom.
- Press the 'Devices Switch Button' (labeled 6 in the button diagram) until the white indicator light for 2.4G (labeled 7) illuminates. The mouse should now be connected.

2. Bluetooth Connection (Bluetooth 1 / Bluetooth 2):

- Turn on the mouse using the On/Off switch.
- Press the 'Devices Switch Button' (6) to select either Bluetooth 1 (blue indicator) or Bluetooth 2 (green indicator).
- Press and hold the 'Devices Switch Button' for 3-5 seconds until the selected Bluetooth indicator light starts flashing rapidly. This indicates pairing mode.
- On your device (laptop, tablet, smartphone), go to Bluetooth settings and search for new devices.
- Select "CITLLA E510" (or similar name) from the list of available devices to pair.
- Once paired, the indicator light will stop flashing and remain solid.



Image: Diagram showing the mouse wirelessly connected to a laptop, desktop monitor, and tablet, illustrating its multi-device capability.

3. OPERATING INSTRUCTIONS

3.1 Button Functions

- | | | |
|------------------------------------|---|---|
| 1 Left Button | 5 Side Wheel | 8 Forward/Back Button (Windows)
Switch Applications (macOS) |
| 2 Right Button | 6 Devices Switch Button | 9 Return to Desktop (Windows)
Full Screen (Control+Command+F) (macOS) |
| 3 Smart Flying Scroll Wheel | 7 Devices Indicators:
<div> <div>2.4G White Indicator</div> <div>Bluetooth 1 Blue Indicator</div> <div>Bluetooth 2 Green Indicator</div> <div>DPI Indicator</div> <div>Low power indicator</div> </div> | |
| 4 DPI Button | | |

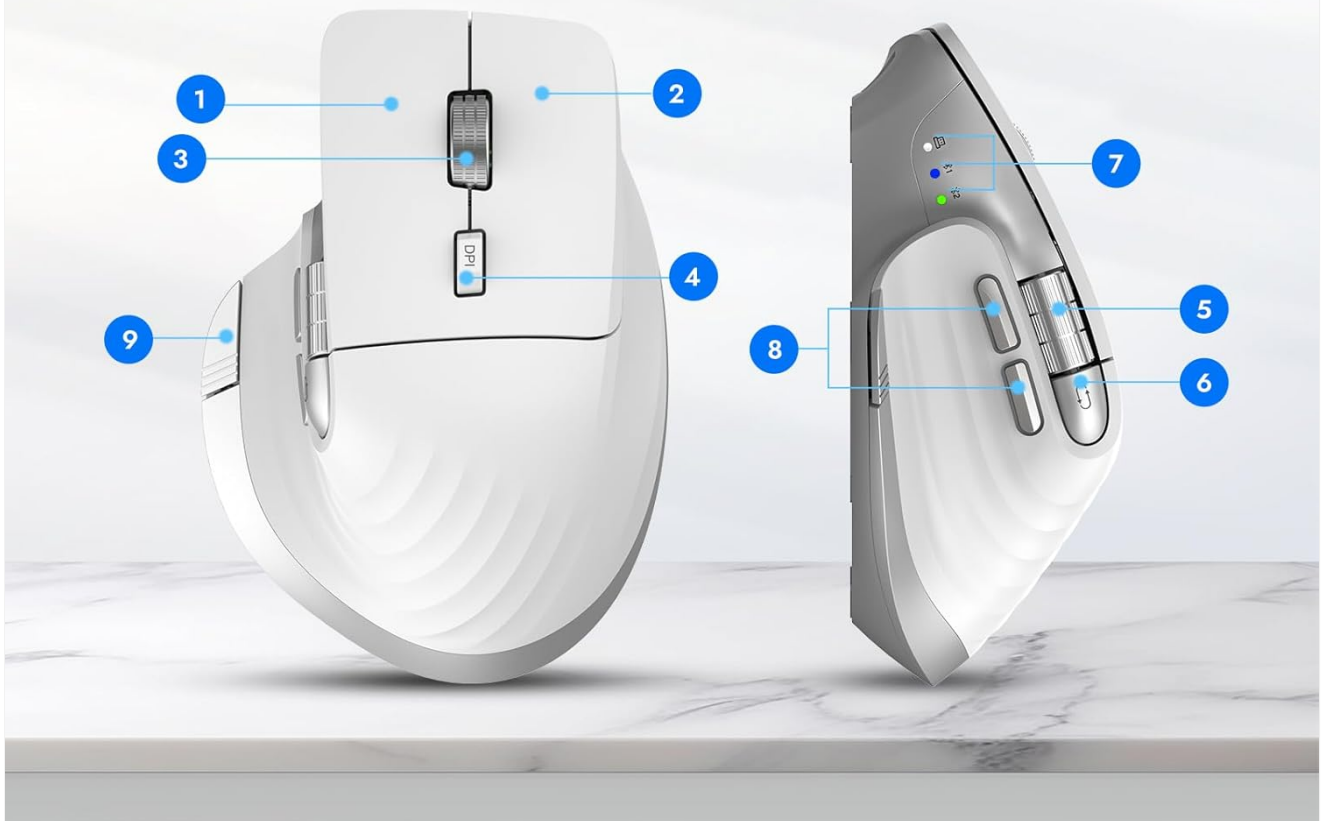


Image: Detailed diagram of the mouse buttons and their corresponding functions.

- **1. Left Button:** Standard left-click function.
- **2. Right Button:** Standard right-click function.
- **3. Smart Flying Scroll Wheel:** For ultra-fast, nearly silent vertical scrolling.
- **4. DPI Button:** Press to cycle through 4 adjustable DPI levels (1000/1600/2400/3200).
- **5. Side Wheel:** For fast horizontal scrolling.
- **6. Devices Switch Button:** Press to switch between connected devices (2.4G, Bluetooth 1, Bluetooth 2). Press and hold to enter Bluetooth pairing mode.
- **7. Devices Indicators:** White for 2.4G, Blue for Bluetooth 1, Green for Bluetooth 2. Also includes a low power indicator.
- **8. Forward/Back Buttons:** Navigate forward/back in web browsers or switch applications (macOS).
- **9. Return to Desktop Button:** Instantly minimizes all windows to show the desktop (Windows only). For macOS, this button can be used for Full Screen (Control+Command+F).

3.2 Scrolling Functions

The mouse features two distinct scrolling mechanisms:

- The **Smart Flying Scroll Wheel** (3) on top provides smooth and rapid vertical scrolling, ideal for long documents or web pages.
- The **Side Wheel** (5) allows for horizontal scrolling, which is particularly useful for navigating wide spreadsheets or timelines.

Ultra-Fast & Precise Scrolling, Work More Efficiently



Quick and Accurate Scrolling Horizontal page scrolling

Image: A hand operating the mouse, highlighting the smart flying scroll wheel and the side thumb wheel for efficient navigation.

3.3 DPI Adjustment

The DPI (Dots Per Inch) button (4) allows you to adjust the cursor sensitivity. Press the DPI button to cycle through the four available settings: 1000, 1600, 2400, and 3200 DPI. Choose a setting that best suits your task, whether it's precise graphic design or fast-paced gaming.

4-Level Adjustable DPI

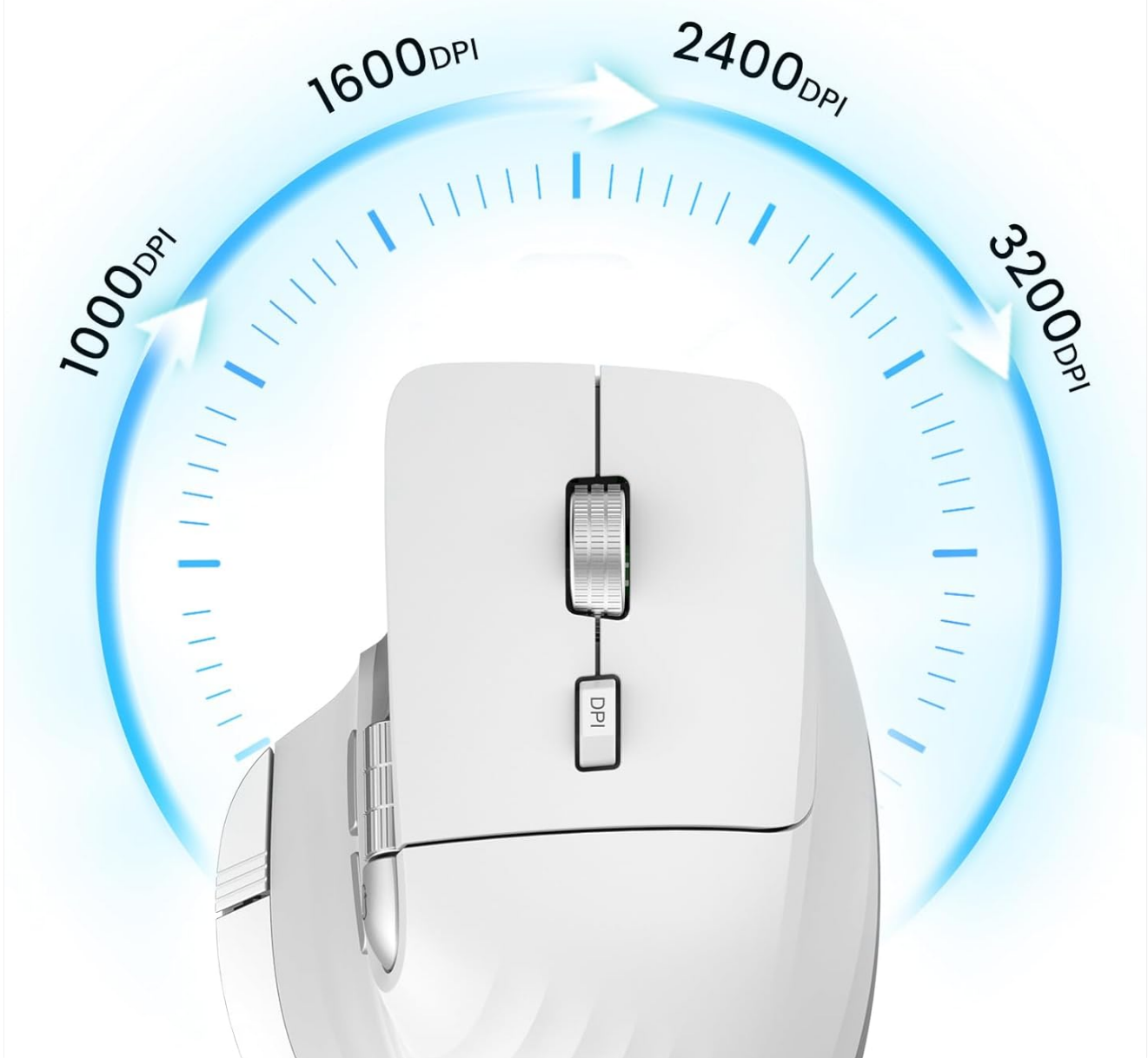


Image: A visual representation of the 4-level adjustable DPI settings (1000, 1600, 2400, 3200 DPI).

3.4 Special Features

- **Silent Click Design:** The mouse is engineered for quiet operation, making it suitable for shared workspaces and quiet environments.
- **Return to Desktop (Windows Only):** The dedicated button (9) provides a quick way to minimize all open windows and display your desktop. This feature is specific to Windows operating systems.

Return to Desktop (Windows)



Image: A laptop screen showing multiple open windows, with an arrow indicating the 'Return to Desktop' button on the mouse minimizing them.

3.5 Product Feature Video

Your browser does not support the video tag.

Video: An official product video from CITLLA showcasing the key features and functionality of the PRO MAX E510 Wireless Bluetooth Mouse, including its ergonomic design, multi-device connectivity, and smart scrolling.

4. MAINTENANCE

4.1 Cleaning

To maintain optimal performance, regularly clean your mouse. Use a soft, dry cloth to wipe the exterior. For stubborn dirt, a slightly damp cloth can be used, ensuring no moisture enters the internal components. Avoid harsh chemicals or abrasive materials.

4.2 Battery Care

The mouse is equipped with a rechargeable battery. Charge it using a standard USB-C cable. The low power

indicator will alert you when charging is needed. To prolong battery life, the mouse enters an auto-sleep mode after 15 minutes of inactivity. Click any button to reactivate it.

5. TROUBLESHOOTING

- **Mouse not responding:**
 - Ensure the mouse is turned on.
 - Check battery level and charge if necessary.
 - Verify the correct connection mode (2.4G, BT1, BT2) is selected using the Devices Switch Button.
 - For 2.4G, ensure the USB receiver is securely plugged in.
 - For Bluetooth, re-pair the mouse with your device.
- **Cursor movement is erratic or slow:**
 - Adjust the DPI setting using the DPI button (4) to a higher sensitivity.
 - Ensure the mouse sensor is clean and free from obstructions.
 - Use the mouse on a suitable surface (e.g., a mouse pad).
- **Cannot switch between devices:**
 - Ensure all devices are properly paired/connected to their respective channels (2.4G, BT1, BT2).
 - Press the Devices Switch Button (6) firmly to cycle through the connections.
- **Return to Desktop button not working:**
 - This feature is only supported on Windows systems.
 - Ensure your Windows operating system is up to date.

6. SPECIFICATIONS

Product Dimensions	4.6 x 2.6 x 0.04 inches
Item Weight	6.7 ounces
Batteries	1 Nonstandard Battery (included)
Connectivity Technology	Bluetooth, 2.4G USB Wireless
Special Features	4 Way Scrolling, Ergonomic Design, Rechargeable, Silent Click, Wireless
Movement Detection Technology	Optical

7. COMPATIBILITY

The CITLLA PRO MAX E510 Wireless Bluetooth Mouse is compatible with a wide range of operating systems:

- Windows
- Mac OS
- Chrome OS
- Linux

- iOS
- Android

Wide Compatibility



Image: Icons for Android, Linux, Windows, Chrome OS, and Mac OS, indicating wide compatibility.

8. WHAT'S IN THE BOX

- CITLLA PRO MAX E510 Wireless Bluetooth Mouse
- USB-C Charging Cable
- 2.4G USB Receiver (stored in mouse)
- User Manual

9. WARRANTY AND SUPPORT

For warranty information, technical support, or any inquiries regarding your CITLLA PRO MAX E510 Wireless Bluetooth Mouse, please refer to the contact information provided in the packaging or visit the official CITLLA website. Our customer service team is available to assist you with any product-related concerns.

