

Reobiux ZR-US

Reobiux 4G LTE Cellular Solar Security Camera User Manual

Model: ZR-US

INTRODUCTION

This manual provides comprehensive instructions for the installation, operation, and maintenance of your Reobiux 4G LTE Cellular Solar Security Camera. Designed for outdoor use, this camera offers 2K resolution, 360° live view, color night vision, PIR detection, and two-way audio, operating independently of Wi-Fi through a 4G cellular network and powered by solar energy.



Figure 1: Reobiux 4G LTE Cellular Solar Security Camera with its solar panel and a smartphone displaying the live feed.

WHAT'S IN THE BOX

Verify that all components are present before proceeding with installation:

- Low-Power Surveillance Camera
- Solar Panel & Solar Bracket
- Instruction Manual
- 3-Meter Power Cord
- Screw Package (for mounting)

SETUP

1. SIM Card Installation

This camera operates on a 4G cellular network. A SIM card is required for connectivity. Ensure the SIM card is activated and compatible with AT&T, Verizon, or T-Mobile networks. Contact customer service if you plan to use your own 4G card to ensure whitelist compatibility.

1. Locate the SIM card slot on the camera body.
2. Insert the activated 4G SIM card into the slot, ensuring correct orientation.
3. Secure the SIM card slot cover to maintain weather resistance.

No WiFi Required & Solar Powered

No Wi-Fi or power cable needed, works anywhere.



Figure 2: The camera's SIM card slot and internal battery capacity, highlighting its cellular and solar capabilities.

2. Solar Panel Mounting and Connection

The solar panel provides continuous power to the camera's built-in 10,400mAh battery. Choose a location that receives ample direct sunlight throughout the day.

1. Attach the solar bracket to the solar panel.
2. Mount the solar panel in the chosen location using the provided screw package. Ensure it is securely fastened.

3. Connect the 3-meter power cord from the solar panel to the camera's power input port.
4. Adjust the angle of the solar panel to maximize sun exposure.



Figure 3: The solar panel connected to the camera, illustrating how it provides continuous power.

3. Camera Mounting

The camera is designed for wall mounting and outdoor use.

1. Select a suitable mounting location that provides the desired viewing angle and is within range of the solar panel cable.
2. Use the screw package to securely attach the camera to the wall.
3. Ensure the camera is stable and positioned correctly for optimal surveillance.

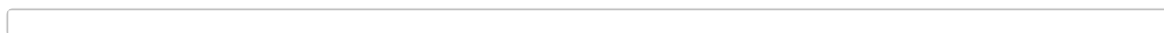


Figure 4: Examples of off-grid security solutions where the camera can be effectively mounted and used.

OPERATING INSTRUCTIONS

1. Yoosee App & Remote Access

The camera is controlled via the Yoosee app, available for iPhone and other compatible devices. The app allows for remote viewing, playback, and configuration.

1. Download and install the "Yoosee" app from your device's app store.
2. Register an account and log in.
3. Follow the in-app instructions to add your camera. Ensure the camera is powered on and has a working 4G SIM card.
4. Once added, you can access live view, recorded footage, and camera settings from anywhere with cellular coverage.

2. Pan-Tilt-Zoom (PTZ) Control

The camera features 360° rotation (355° horizontal, 90° vertical) and 4X optical zoom, allowing for comprehensive coverage.

- In the Yoosee app's live view, use the on-screen controls to pan (left/right), tilt (up/down), and zoom in/out.
- The 4MP resolution ensures clear images even when zoomed.

4MP UHD & PTZ 360° Vision

Crystal Clear Monitoring with Pan-Tilt-Zoom Control



Figure 5: Illustrates the camera's 360° pan-tilt-zoom capabilities and 4MP resolution for detailed monitoring.

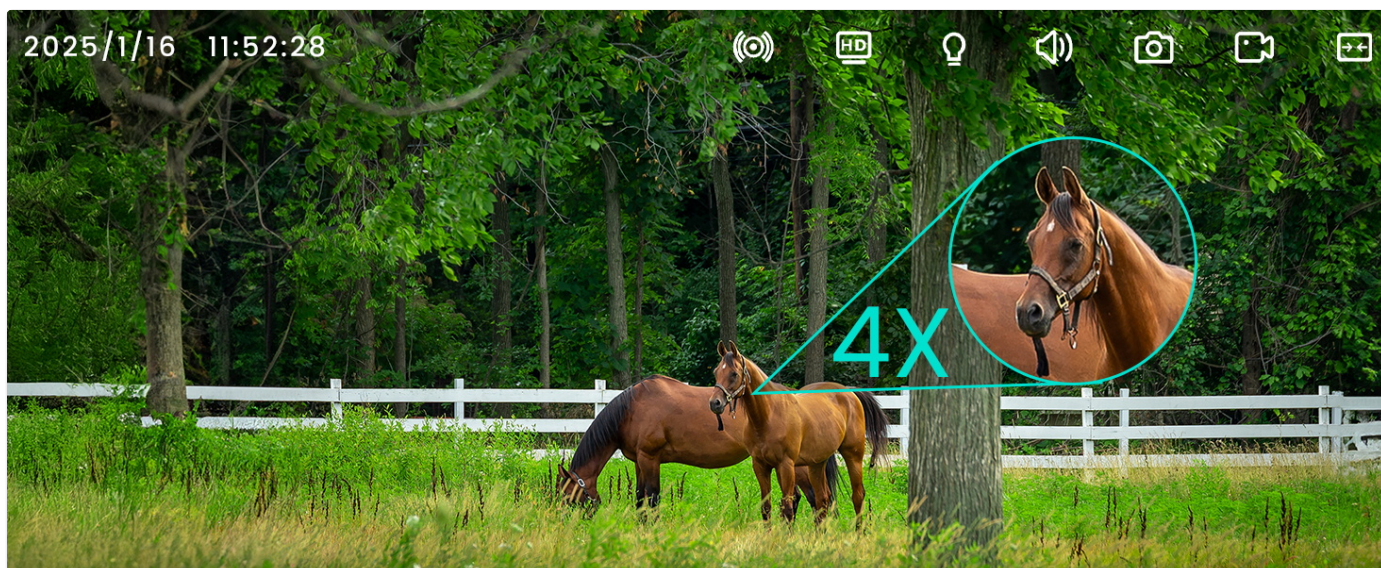


Figure 6: A visual representation of the camera's 4X optical zoom capability, showing clear detail on distant objects.

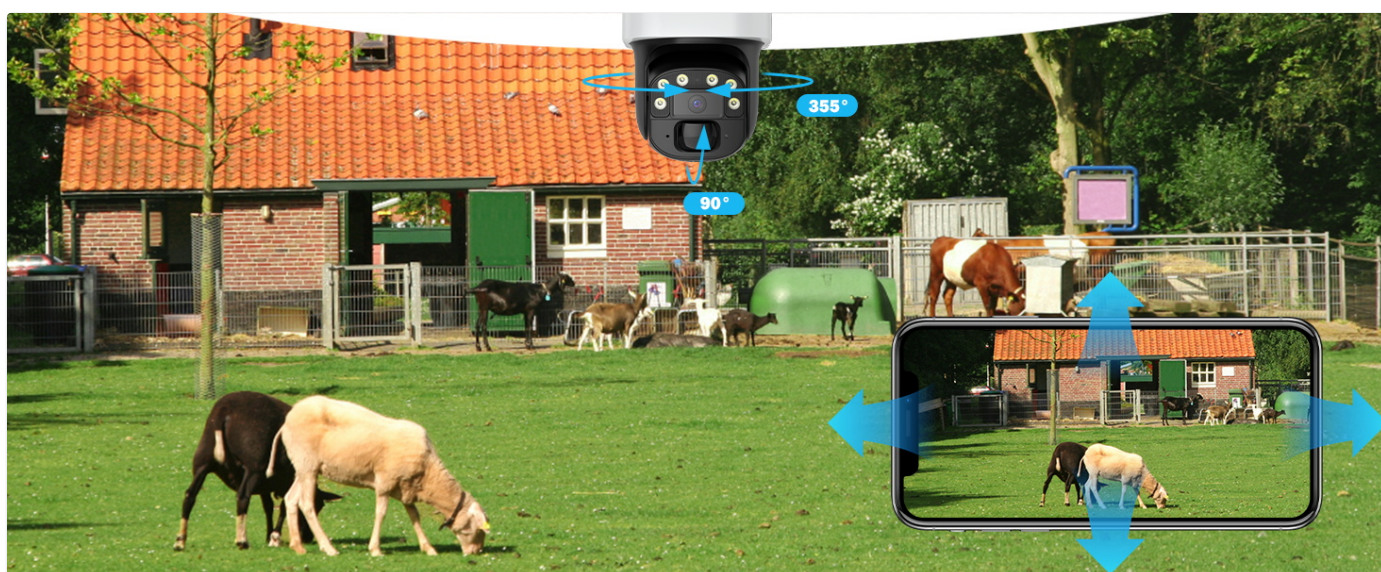


Figure 7: Demonstrates the camera's extensive pan (355°) and tilt (90°) range, controllable via the app.

3. Dual Night Vision Modes

The camera offers both color night vision and infrared (IR) mode for clear imaging in low-light conditions up to 30 meters.

- **Color Night Vision:** Utilizes built-in spotlights to provide full-color images at night.
- **Infrared (IR) Mode:** Provides black and white images using infrared LEDs for discreet monitoring.
- Switch between modes in the Yoosee app settings based on your preference.

Dual Night Vision Modes

Full Color for Detail or Infrared for Stealth — Choose Your View



Figure 8: Comparison of the camera's full-color night vision and infrared (black and white) night vision modes.



Figure 9: Illustration of the camera's effective night vision range of up to 30 meters.

4. PIR Detection & Alerts

The camera features advanced Passive Infrared (PIR) motion detection to identify human and animal movement, minimizing false alarms.

- When motion is detected, the camera can instantly trigger alerts (light, siren, message notification) to your phone via the Yoosee app.
- Customize detection sensitivity and alert types within the app settings.

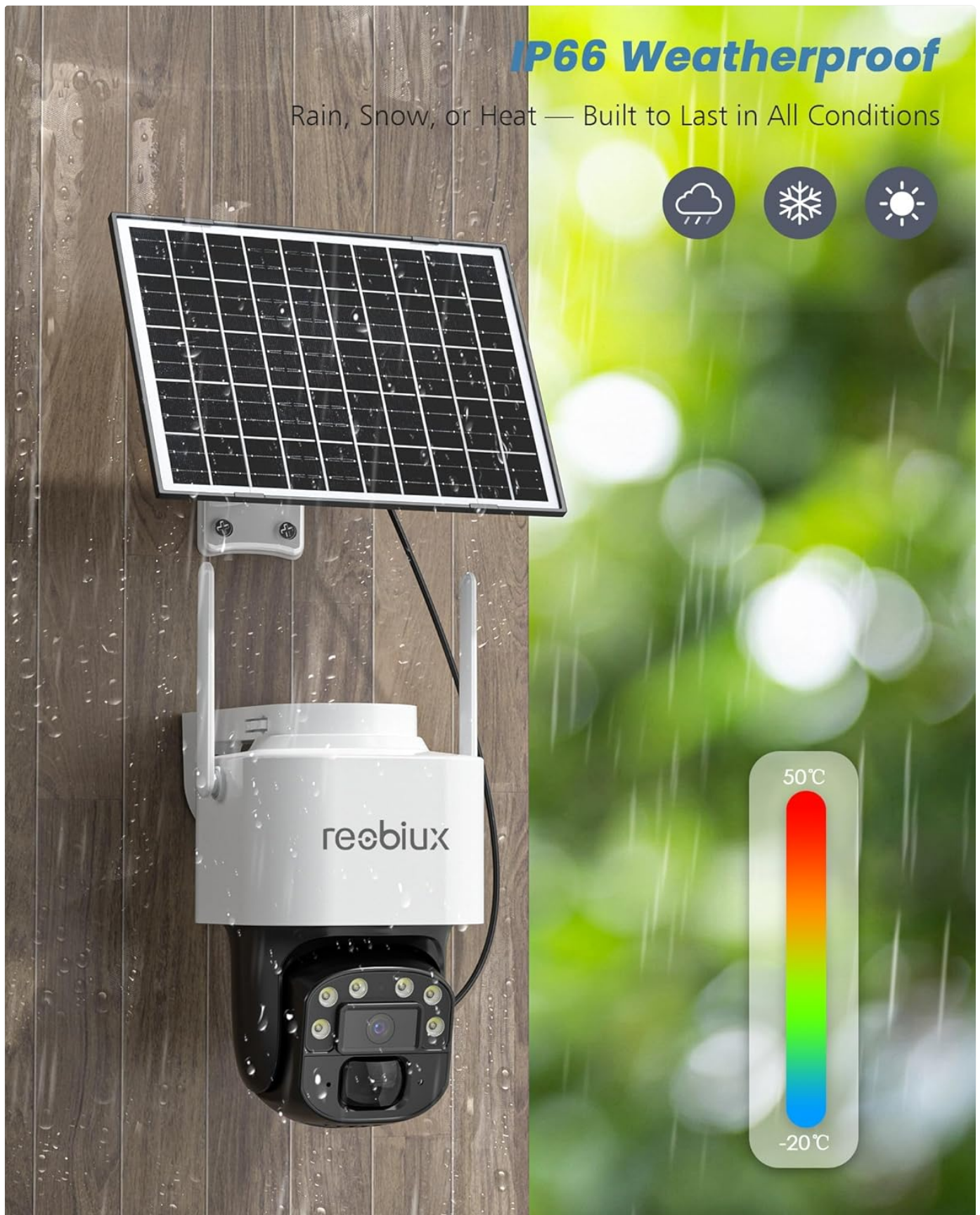


Figure 10: The camera's PIR detection system triggering light, siren, and app notification alerts upon detecting motion.

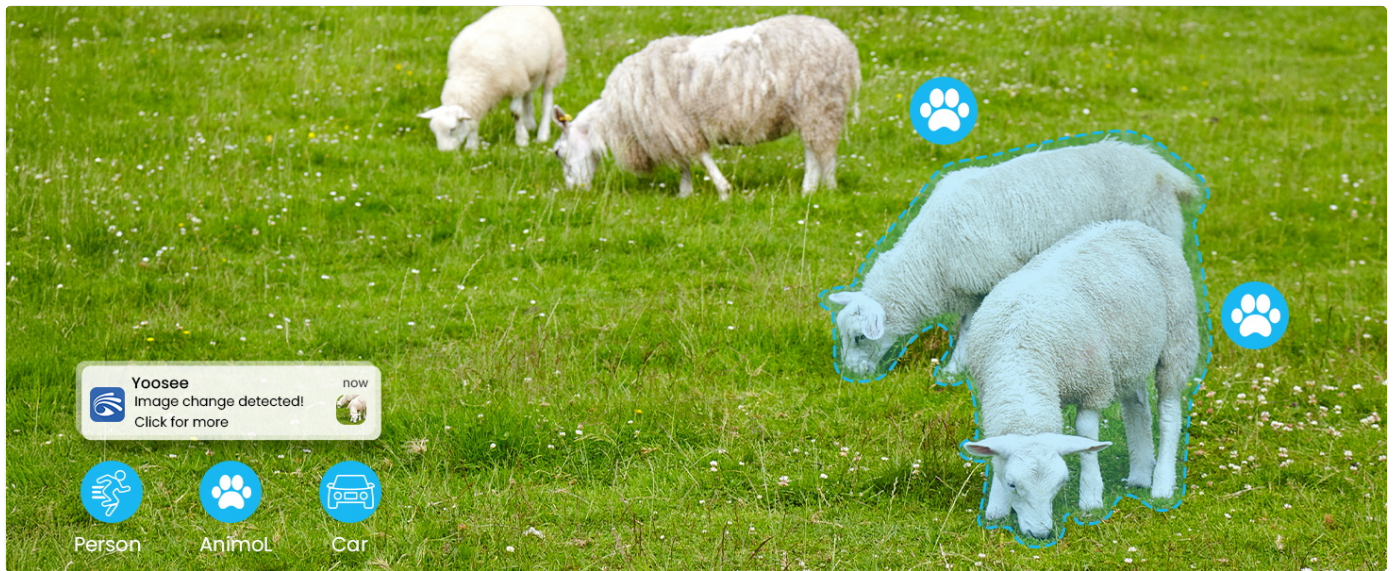


Figure 11: Example of the camera's intelligent PIR detection identifying animals and sending an alert.



Figure 12: The camera's active deterrence features, including a siren and spotlight, to ward off unauthorized individuals.

5. Two-Way Audio

Communicate in real-time with individuals near the camera using the built-in microphone and speaker.

- Access the two-way audio function through the Yoosee app's live view interface.
- Press and hold the microphone icon to speak, and release to listen.



Two-way Audio & Family Sharing

Communicate in Real-Time and Grant Access to Loved Ones

Figure 13: The camera's two-way audio function enabling real-time communication and family sharing.



Figure 14: Another example of two-way audio in use, demonstrating communication with individuals in the camera's vicinity.

6. Storage Options

The camera supports both local and cloud storage for recorded footage.

- **TF Card Storage:** Supports up to 128GB TF (microSD) cards for local storage. Insert the card into the designated slot.
- **Cloud Storage:** An optional subscription service is available for cloud storage, allowing you to view, replay, or download videos via the Yoosee app without needing a local card.



Figure 15: Visual representation of the camera's support for both SD card and optional cloud storage.



Figure 16: Details on SIM card location and potential data subscription costs for cellular connectivity.

MAINTENANCE

1. Weather Resistance

The camera has an IP66 waterproof rating, ensuring it can withstand various outdoor weather conditions, including rain, snow, and extreme temperatures (-20°C to 50°C).

- Periodically check the camera and solar panel for any debris accumulation (e.g., leaves, dust) that might obstruct the lens or solar cells.
- Gently clean the lens and solar panel surface with a soft, damp cloth if necessary. Avoid abrasive cleaners.

Smart PIR Detection Alerts

Instant Notifications When Motion is Detected



Light



Siren



Message

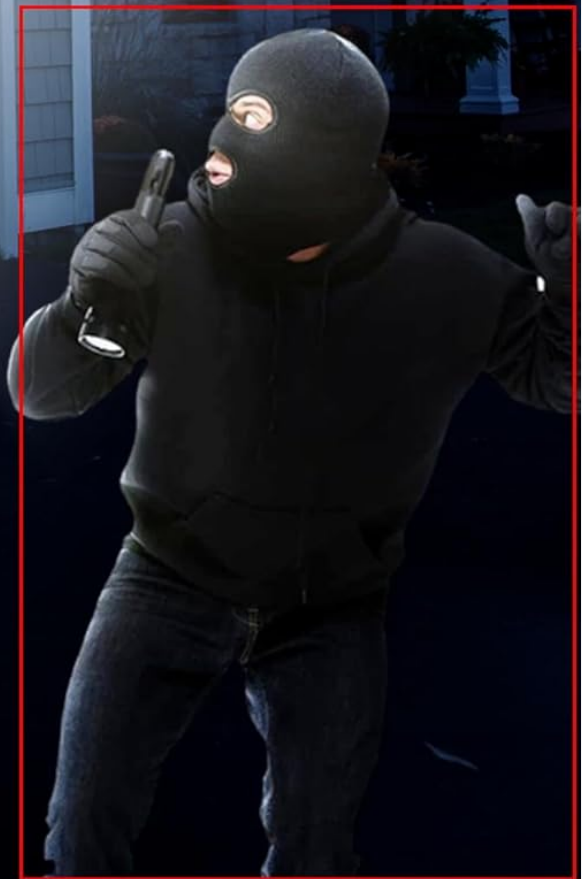
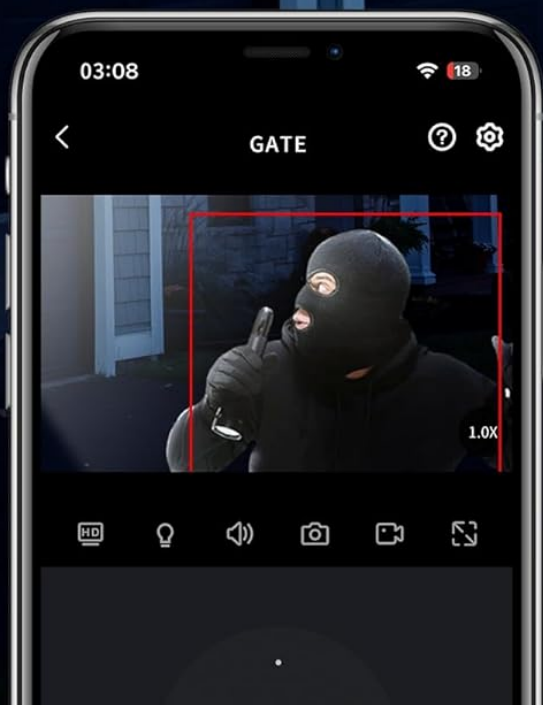
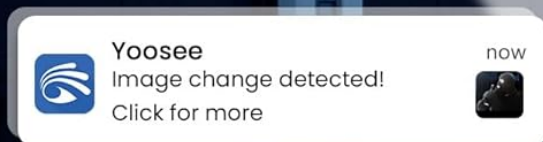


Figure 17: The camera's IP66 weatherproof rating, indicating its resilience to rain, snow, and a wide temperature range.

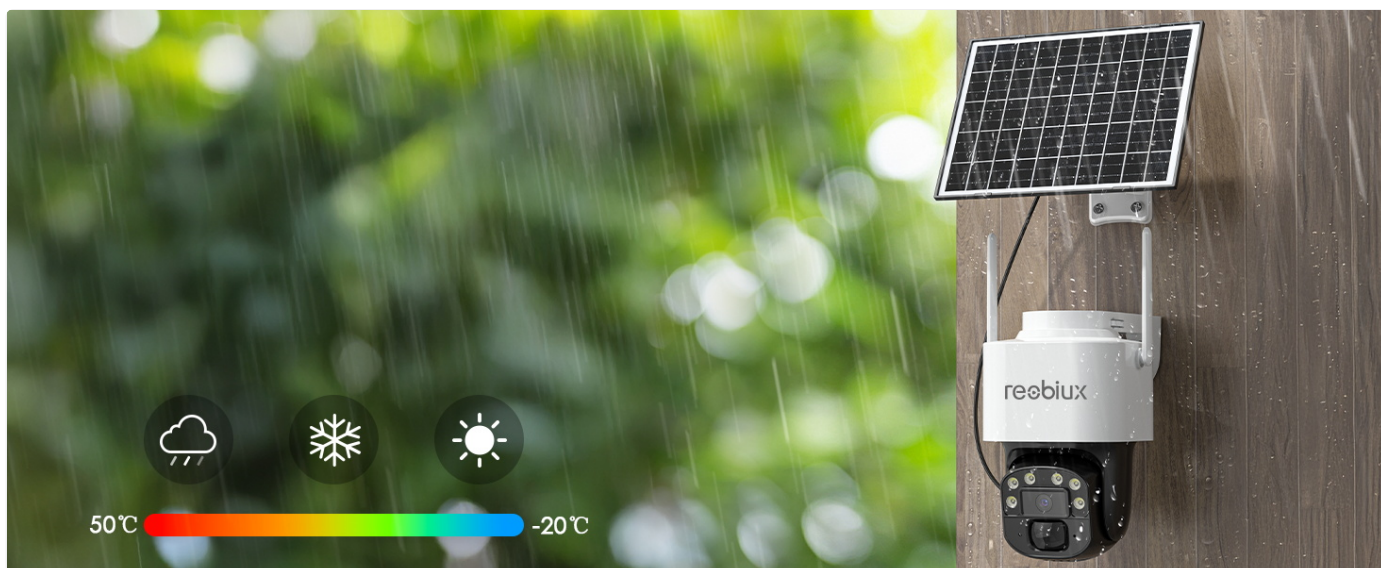


Figure 18: Visual confirmation of the camera's ability to operate reliably in various weather conditions.

2. Battery Management

The integrated solar panel is designed to keep the 10,400mAh battery charged. In periods of prolonged low sunlight, the battery level may decrease.

- Monitor the battery status through the Yoosee app.
- Ensure the solar panel is free from obstructions and receives maximum sunlight.

TROUBLESHOOTING

Problem	Possible Cause	Solution
Camera offline / No connection	No 4G signal SIM card not activated or incorrectly inserted Data plan expired or insufficient	Check 4G network coverage in the area. Reinsert SIM card, ensure it's activated. Verify data plan status with your carrier. Contact customer service if using your own SIM for whitelist check.
Battery not charging / Low battery	Insufficient sunlight on solar panel Solar panel obstructed or dirty Faulty connection	Relocate solar panel to an area with more direct sunlight. Clean the solar panel surface. Check the connection cable between the solar panel and camera.
Poor image quality	Dirty lens Low light conditions (if not using night vision) Network bandwidth issues	Clean the camera lens with a soft cloth. Ensure night vision is enabled in low light. Check 4G signal strength; higher signal provides better streaming.
PIR alerts are too frequent/infrequent	Sensitivity settings Environmental factors (e.g., swaying branches)	Adjust PIR sensitivity in the Yoosee app. Reposition the camera to avoid areas with constant non-human/animal motion.

SPECIFICATIONS

Feature	Detail
Model Name	ZR-US
Brand	Reobiux
Connectivity Technology	Cellular (4G LTE)
Power Source	Solar Powered (10,400mAh built-in battery)
Indoor/Outdoor Usage	Outdoor
Video Capture Resolution	2K (4MP Effective Still Resolution)
Optical Zoom	4X
Viewing Angle	355° Pan, 90° Tilt
Night Vision Range	30 Meters (Dual Night Vision Modes: Color/IR)
Water Resistance Level	IP66 Waterproof
Operating Temperature	-20°C to 50°C
Storage Options	TF Card (up to 128GB), Cloud Storage (optional)
Controller Type	Yoosee App
Material	Acrylonitrile Butadiene Styrene (ABS)
Dimensions (L x W x H)	10.11 x 8.35 x 5.7 inches
Item Weight	3.43 pounds

WARRANTY AND SUPPORT

For warranty information and technical support, please refer to the official Reobiux website or contact their customer service directly. Details are typically provided on the product packaging or within the Yoosee app's help section.

Manufacturer: Reobiux

Contact: Refer to the Reobiux official website or the Yoosee app for support contact information.

