

WinZo SM8007-1

WinZo 23-inch Compact Smart Toilet with Bidet Seat

Model: SM8007-1

1. SAFETY INFORMATION

Read all instructions carefully before installation and use. Failure to follow these instructions may result in property damage, personal injury, or death.

1.1 General Safety

- This product is intended for indoor use only.
- Do not allow children to operate the toilet without supervision.
- Avoid placing heavy objects on the toilet lid or seat.
- Do not use abrasive cleaners or harsh chemicals, as these can damage the surface.

1.2 Electrical Safety

- Ensure the power outlet is properly grounded and meets local electrical codes.
- Do not plug or unplug the unit with wet hands.
- If the power cord is damaged, it must be replaced by a qualified technician.
- Unplug the toilet before performing any maintenance or cleaning.

1.3 Water Safety

- Ensure water supply connections are secure to prevent leaks.
- Do not use water hotter than recommended for bidet functions to avoid scalding.
- Turn off the water supply valve if the toilet will not be used for an extended period.

2. PACKAGE CONTENTS

Verify that all components are present before beginning installation:

- WinZo Smart Toilet Unit
- Bidet Seat Assembly
- Wireless Remote Control
- Angle Valve
- Constant Flow Valve
- Floor Flange
- Fixing Bolts and Washers
- Nuts
- Braided Water Inlet Pipe
- Wax Ring
- Instruction Manual

3. PRODUCT OVERVIEW

3.1 Key Features

- **Compact Design:** 23-inch length, tankless design for space-saving in small bathrooms.
- **Automatic Functions:** Auto open/close lid, auto flush, and foot sensor for touchless operation.
- **Heated Bidet Seat:** Instant warm water with 4 adjustable temperature levels.
- **Warm Air Drying:** Adjustable warm air dryer with 4 temperature levels.
- **Multiple Cleaning Modes:** Includes women's cleaning, hips cleaning, mobile massage cleaning, and nozzle self-cleaning with UV-C technology.
- **User Interface:** Remote control and smart side knob for function control, LED digital display, and night light.
- **Emergency Flush:** Manual flushing capability during power outages (requires 9V batteries, not included).

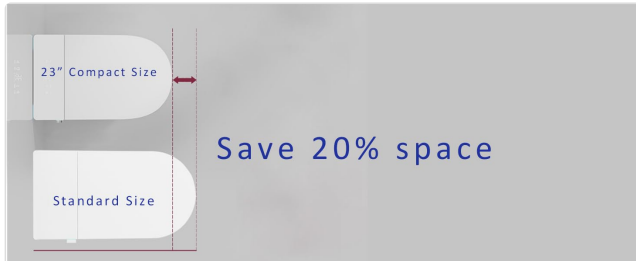
3.2 Dimensions



Product dimensions: 23"D x 14"W x 18.5"H, with a 17" seat height and 12" rough-in.



The compact 23-inch depth of the toilet is ideal for small bathrooms.



The compact design saves approximately 20% more space compared to standard toilets.

4. INSTALLATION GUIDE

This section provides step-by-step instructions for installing your WinZo Smart Toilet. For a visual guide, please refer to the installation video below.

4.1 Pre-Installation Checklist

- Ensure the installation area is clean and dry.
- Verify the floor is horizontal using a level.
- Confirm the sewer pipe is unobstructed.
- Measure the rough-in distance; it must be 12 inches or greater.
- Ensure water pressure is over 0.14MPa and flow rate is over 18L/min.
- Have all package contents ready.

4.2 Installation Steps

1. **Prepare the Angle Valve:** Wrap PTFE tape (raw material belt) around the threads of the angle valve interface to ensure a watertight seal.
2. **Install Angle Valve:** Securely install the angle valve onto the wall water supply pipe.
3. **Drain Residual Water:** Briefly open the angle valve to flush out any debris or residual water from the supply line, then close it.
4. **Reinstall Constant Flow Valve:** Reattach the constant flow valve to the angle valve.
5. **Prepare Floor Flange:** Insert the expansion screws into the floor flange.
6. **Mount Floor Flange:** Position and secure the floor flange over the drain opening, ensuring the screws are aligned.
7. **Install Wax Ring:** Place the wax ring onto the toilet's drain hole, ensuring it is centered.

8. **Position Toilet:** Carefully lower the toilet unit onto the floor flange, aligning the toilet's drain with the flange and the screws.
9. **Secure Toilet:** From underneath the toilet, install the flat washers and nuts onto the flange screws. Tighten them securely but do not overtighten to avoid cracking the porcelain.
10. **Settle Bidet Seat Assembly:** Ensure the upper bidet seat assembly is properly settled and secured onto the toilet base.
11. **Connect Water Inlet Pipe:** Connect the braided water inlet pipe from the angle valve to the toilet's water inlet. Pay attention not to bend the braided tube. Open the angle valve to the maximum and check for any water leaks.
12. **Power On:** Plug the toilet's power cord into a grounded electrical outlet.

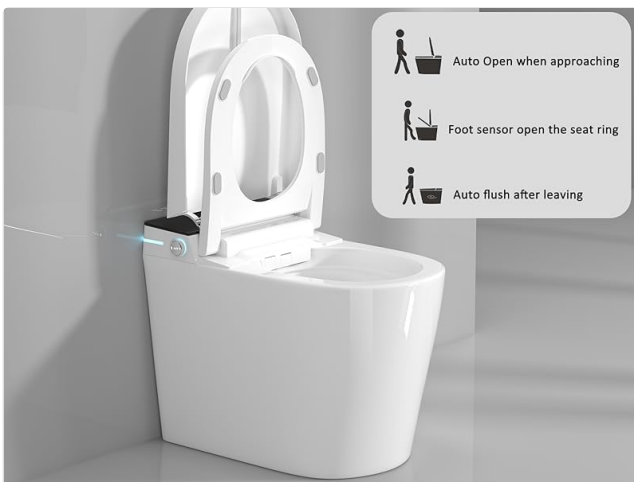
4.3 Installation Video

Official WinZo Smart Toilets Installation Video. This video demonstrates the complete installation process for the smart toilet.

5. OPERATING INSTRUCTIONS

Your WinZo Smart Toilet offers various features for enhanced hygiene and comfort.

5.1 Automatic Functions



The toilet features auto-open lid, foot sensor for seat lifting, and auto-flush upon departure.



Utilize the foot sensor for hands-free seat opening.

- **Auto Open/Close:** The lid automatically opens when you approach and closes after use.
- **Foot Sensor:** A foot sensor allows for touchless lifting of the toilet seat.
- **Auto Flush:** The toilet automatically flushes after use.

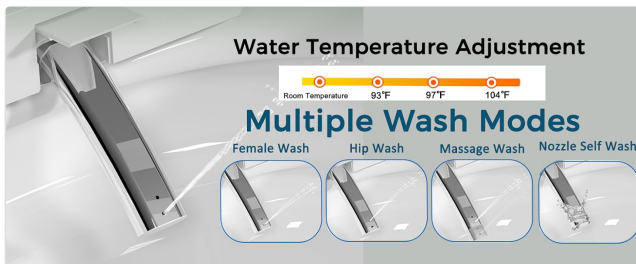
5.2 Bidet and Drying Functions



The heated seat offers 4 adjustable temperature levels for comfort.



The warm air dryer provides 4 adjustable temperature levels for efficient drying.



Multiple wash modes are available, including female, hip, and massage wash, with adjustable water temperature.



The nozzles feature UV-C sterilization and offer multiple cleaning modes for hygiene.

- **Heated Seat:** Adjust the seat temperature to one of 4 levels (approx. 93°F, 97°F, 104°F).
- **Warm Air Drying:** Select from 4 levels of warm air temperature (approx. 95°F, 113°F, 131°F).
- **Women Cleaning (Front Wash):** Provides a gentle front wash.
- **Hips Cleaning (Back Wash):** Provides a thorough rear wash.
- **Mobile Massage Cleaning:** Offers a pulsating wash for a massage effect.
- **Nozzle Self-Cleaning:** The bidet nozzles automatically clean themselves before and after use, enhanced with UV-C technology.

5.3 Controls and Lighting



All functions can be controlled via the wireless remote control.



The side knob provides easy access to female wash (anticlockwise), hip wash (clockwise), and start/stop functions (click).



The integrated LED night light offers convenience during nighttime use.

- **Remote Control:** Use the provided wireless remote to access all toilet functions.
- **Side Knob:** A smart knob on the side allows for quick control: turn anticlockwise for female wash, clockwise for hip wash, and click to start or stop functions.
- **Night Light:** The LED display includes a smart night light for visibility in low-light conditions.

5.4 Emergency Functionality

- **Manual Flush:** In the event of a power outage, the toilet can be manually flushed. This feature requires 9V batteries (not included).

6. MAINTENANCE

Regular maintenance ensures optimal performance and longevity of your smart toilet.

- **Exterior Cleaning:** Clean the exterior surfaces with a soft, damp cloth and mild, non-abrasive cleaner. Avoid harsh chemicals.
- **Nozzle Cleaning:** The bidet nozzles perform an automatic self-cleaning cycle. For additional cleaning, use the dedicated nozzle cleaning function via the remote or side knob.
- **Filter Cleaning:** Periodically check and clean the water inlet filter to prevent blockages.

- **Power Off for Extended Periods:** If the toilet will not be used for a long time, turn off the water supply and unplug the unit.

7. TROUBLESHOOTING

Refer to this section for common issues and their solutions.

Problem	Possible Cause	Solution
No power / Unit unresponsive	Power cord unplugged, circuit breaker tripped, power outage.	Check power connection, reset circuit breaker, verify power supply.
No water / Weak water flow	Water supply valve closed, water inlet filter clogged, low water pressure.	Open water supply valve, clean water inlet filter, check household water pressure.
Bidet functions not working	Nozzle blocked, water supply issue, user not seated properly.	Perform nozzle self-cleaning, check water supply, ensure proper seating.
Unusual noises (e.g., beeping)	Normal operation sounds, or a specific alert.	Consult the remote control guide for specific alert meanings. If persistent and disruptive, contact customer support.
Auto flush not activating	Sensor obstruction, power issue.	Ensure sensors are clean and unobstructed. Check power supply.

8. SPECIFICATIONS

Attribute	Detail
Model Number	SM8007-1
Color	White
Product Dimensions (D x W x H)	23" x 14" x 18.5"
Seat Height	17"
Rough-in	Standard 12 inches
Material (Toilet)	Porcelain
Material (Seat)	Acrylonitrile Butadiene Styrene (ABS)
Item Weight	78 Pounds
Installation Type	Floor Mounted
Included Components	Smart toilet, bidet seat, fixing bolts, wireless remote control
Emergency Flush Batteries	9V Batteries (not included)

9. WARRANTY AND SUPPORT

WinZo products are manufactured to high-quality standards. For warranty information, technical support, or service inquiries, please refer to the warranty card included with your product or visit the official WinZo website. Keep your purchase receipt as proof of purchase.