

JTEMAN L35, L39-1

JTEMAN L35/L39-1 Phone Stand with Bluetooth Speaker and Light User Manual

Model: L35, L39-1

INTRODUCTION

Thank you for choosing the JTEMAN L35/L39-1 Phone Stand with Bluetooth Speaker and Light. This device integrates a phone stand, a Bluetooth speaker, an atmosphere light, and (for L39-1) a power bank, offering a versatile solution for entertainment and convenience. This manual provides detailed instructions for setup, operation, and maintenance to ensure optimal performance and longevity of your product.

PRODUCT OVERVIEW

Familiarize yourself with the components and features of your JTEMAN device.



Image: The JTEMAN L35 (left) and L39-1 (right) models. The L35 features a phone stand, Bluetooth speaker, and light. The L39-1 adds a power bank function and a more robust phone holder.

Key Features:

- **Bluetooth Speaker:** Provides clear audio for music and calls.
- **Phone Holder:** Adjustable and rotatable stand for smartphones and tablets (4-13 inches).
- **Atmosphere Light:** Multiple color modes and rhythm effects.
- **Power Bank (L39-1 only):** Integrated 5000mAh portable power bank for charging devices.

Multi-function Bluetooth Speaker



Image: An illustration highlighting the multi-functional aspects of the L39-1 model, including phone holder, 5000mAh power bank, 360° rotation, Bluetooth speaker, and atmosphere light.

SETUP

1. Initial Charging:

Before first use, fully charge the device. Connect the provided USB cable to the charging port on the device and a suitable USB power adapter (not included). The charging indicator will show the charging status.

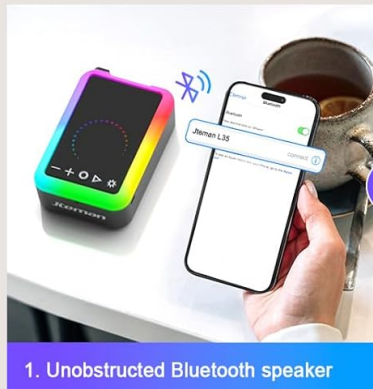
2. Power On/Off:

Press and hold the power button for approximately 3 seconds to turn the device on or off.

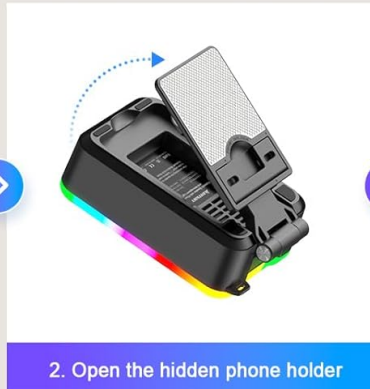
3. Phone Stand Assembly/Adjustment:

Adjustment & Reliable

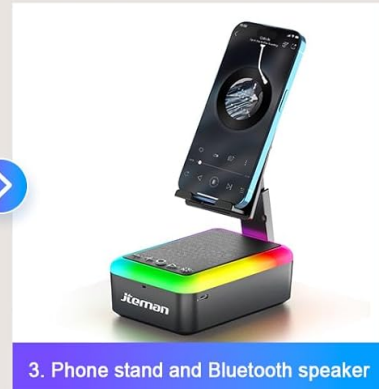
Stable Support



1. Unobstructed Bluetooth speaker



2. Open the hidden phone holder



3. Phone stand and Bluetooth speaker

Image: A visual guide demonstrating the setup of the phone stand. Step 1 shows the unobstructed Bluetooth speaker. Step 2 illustrates opening the hidden phone holder. Step 3 displays the phone stand and Bluetooth speaker in use. The image also shows dimensions and angle adjustments (30°-60° tilt, 270° rotation).

- **Unfold the Stand:** Gently pull up the hidden phone holder from the top of the device.
- **Adjust Angle:** The stand allows for angle adjustments between 30° and 60° for optimal viewing.
- **Rotate:** The phone holder can rotate up to 270° to accommodate various viewing orientations.
- **Placement:** Place your smartphone or tablet (4-13 inches) securely in the holder.



Image: This image illustrates the flexible adjustment and 360-degree rotation capabilities of the phone stand, showing various angles and orientations.

OPERATING INSTRUCTIONS

1. Bluetooth Speaker Pairing:

1. Ensure the device is powered on.
2. The speaker will automatically enter Bluetooth pairing mode, indicated by a flashing LED light.
3. On your smartphone or tablet, go to Bluetooth settings and search for available devices.
4. Select "JTEMAN L35" or "JTEMAN L39-1" from the list.
5. Once connected, the LED light will stop flashing, and a confirmation sound may play.
6. You can now play audio through the speaker.



Phone stand supports for most 4-13" devices (Phone, Tablet)



Image: This image demonstrates the universal compatibility of the JTEMAN Bluetooth speaker, showing it connected to various devices such as laptops, tablets, and smartphones.

2. Atmosphere Light Operation:

The device features multiple lighting modes. Use the dedicated light control button (usually marked with a light bulb icon) to cycle through the modes.

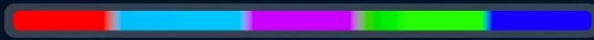


Image: This image displays the 7 color options (Mixed Flash, Purple, Red, Green, Blue, Cyan, Surround Mixed Flash) and 4 lighting selections available on the device. It also shows a slider for brightness adjustment.

- **Color Modes:** Cycle through various single colors (e.g., Red, Green, Blue, Purple, Cyan) and mixed color modes.
- **Rhythm Modes:** Some modes react to music beats, creating a dynamic light show.
- **Brightness Adjustment:** Use the dedicated controls or long-press the light button to adjust brightness (if available).

RGB Atmosphere Light

5 Single Color Modes



3 Mixed Color Modes



3 Mixed Color Rhythm Modes



3 rhythm modes dance to your music beats

Image: This image details the RGB atmosphere light features, including 5 single color modes, 3 mixed color modes, and 3 mixed color rhythm modes that synchronize with music.

3. Power Bank Function (L39-1 only):

The L39-1 model includes a 5000mAh power bank for charging external devices.



Image: The JTEMAN L39-1 device functioning as a 5000mAh power bank, shown charging both a smartphone and a tablet.

- Connect your device's charging cable to the USB output port on the JTEMAN L39-1.
- The JTEMAN device will automatically begin charging your connected device.
- Monitor the charging status on your connected device.

MAINTENANCE

- **Cleaning:** Use a soft, dry cloth to clean the device. Do not use abrasive cleaners or solvents.
- **Storage:** Store the device in a cool, dry place away from direct sunlight and extreme temperatures.
- **Battery Care:** For optimal battery life, avoid fully discharging the battery frequently. Charge the device regularly, even if not in use for extended periods.

TROUBLESHOOTING

Problem	Possible Cause	Solution
---------	----------------	----------

Problem	Possible Cause	Solution
Device does not power on.	Low battery.	Charge the device fully.
Cannot pair via Bluetooth.	Bluetooth not enabled on source device; device not in pairing mode; too far from source.	Ensure Bluetooth is on and the speaker is in pairing mode. Move closer to the speaker. Forget previous pairings and try again.
No sound from speaker.	Volume too low; device not connected; audio source paused.	Increase volume on both speaker and source device. Verify Bluetooth connection. Check audio playback on source.
Lights are not working.	Light function turned off; low battery.	Press the light control button to activate. Charge the device.
Power bank not charging external device (L39-1 only).	Low battery on JTEMAN device; incorrect cable; external device not compatible.	Ensure JTEMAN device is charged. Use a compatible charging cable. Verify external device charging capability.

SPECIFICATIONS

- **Model:** L35, L39-1
- **Bluetooth Version:** 5.3
- **Battery Capacity (L39-1):** 5000mAh
- **Phone Holder Compatibility:** 4-13 inch smartphones and tablets
- **Light Modes:** Multiple color and rhythm modes
- **Rotation:** 360° (phone holder)
- **Tilt Adjustment:** 30°-60° (phone holder)

SAFETY INFORMATION






- Do not expose the device to water or excessive moisture.
- Avoid dropping or subjecting the device to strong impacts.
- Do not attempt to disassemble or repair the device yourself. Contact customer support for assistance.
- Keep out of reach of children.
- Dispose of the device and its battery responsibly according to local regulations.

WARRANTY AND SUPPORT

JTEMAN products are designed for reliability and performance. For warranty information, technical support, or customer service inquiries, please refer to the contact information provided with your purchase or visit the official JTEMAN website.

Website: [JTEMAN Official Store on Amazon](#)

Related Documents - L35, L39-1

	<p>L9 Phone Stand with Bluetooth Speaker Instruction Manual</p> <p>Instruction manual for the L9 Phone Stand with Bluetooth Speaker, detailing product parameters, key functions, usage instructions, and features. Includes FCC compliance information.</p>
	<p>Jteman ML100 User Manual: Night Light Bluetooth Speaker with Alarm Clock</p> <p>Comprehensive user manual for the Jteman ML100 Night Light Bluetooth Speaker with Alarm Clock. Learn about its features, button functions, Bluetooth and SD card modes, light settings, time and alarm clock setup, charging, and safety instructions.</p>
	<p>Ambrogio L35 Robotic Lawnmower User's Manual</p> <p>Comprehensive user manual for the Ambrogio L35 series robotic lawnmowers (models A032DE0, A035BA0, 9035DE0), covering installation, operation, safety, maintenance, and troubleshooting.</p>
	<p>VTech SIP Next Gen Series Cordless Phones User's Guide</p> <p>Comprehensive user's guide for the VTech SIP Next Gen Series cordless phones, including models NG-S3111 and NGC-C3416HC. Learn about setup, operation, safety, and troubleshooting for VTech's advanced SIP communication solutions.</p>
	<p>JMGO PicoPlay+ Stand Portable Power Bank Tripod User Manual</p> <p>User manual for the JMGO PicoPlay+ Stand, a portable power bank tripod for mobile projectors. Features integrated power, Type-C connectivity, and a 1/4-inch mount for easy setup and screen casting.</p>