

## GT POWER 246

# User Manual: AC Adapter for LG 27U731SA and 27U731SA-W Monitor

Model: 246 | Brand: GT POWER

## 1. INTRODUCTION

This manual provides essential information for the safe and effective use of your GT POWER AC Adapter, designed for compatibility with LG 27U731SA and 27U731SA-W Monitors. Please read this manual thoroughly before use and retain it for future reference.

## 2. PRODUCT OVERVIEW

The GT POWER AC Adapter is a reliable power supply unit featuring built-in circuit protections to ensure the safety and longevity of your devices. It is specifically engineered to provide stable power to compatible LG monitors.

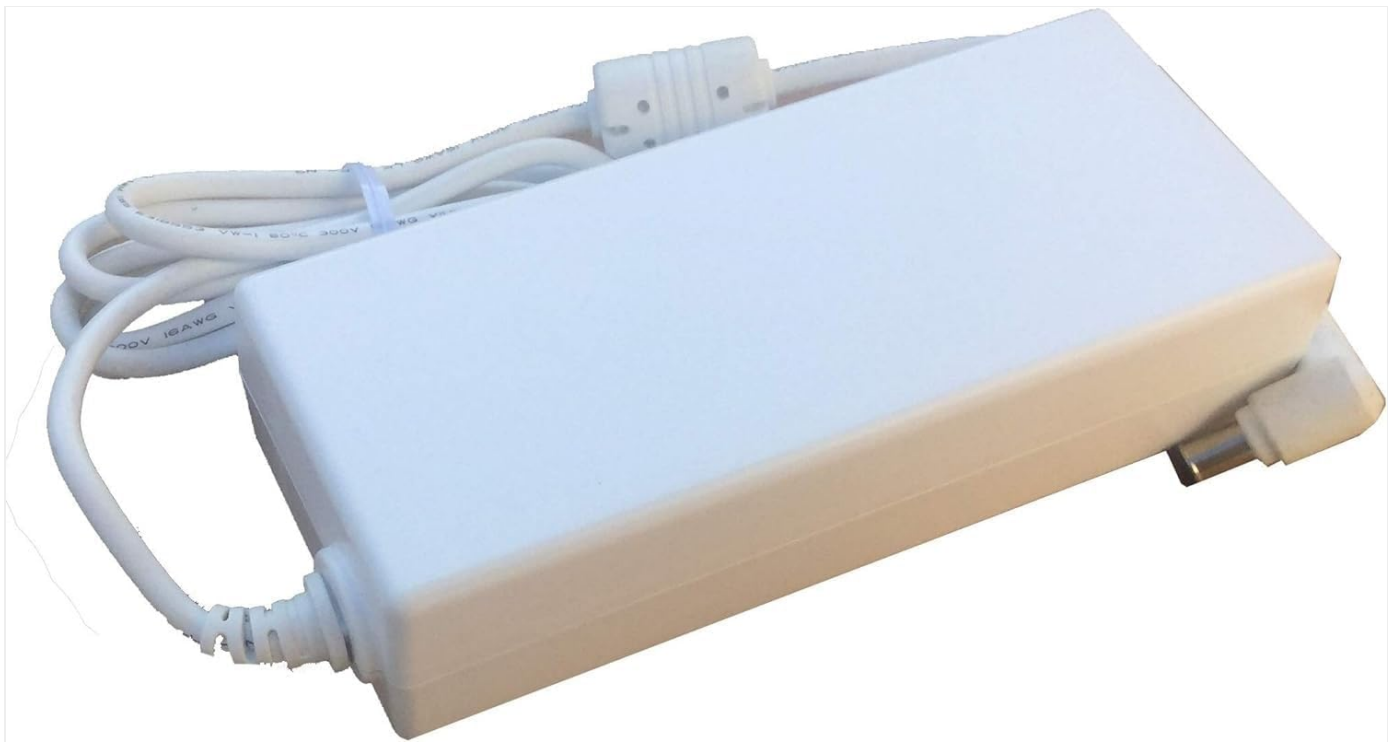
### Key Features:

- **OVP (Over Voltage Output Protection):** Safeguards against excessive output voltage.
- **OCP (Over Current Output Protection):** Protects against overcurrent conditions.
- **SCP (Short Circuit Output Protection):** Prevents damage from short circuits.

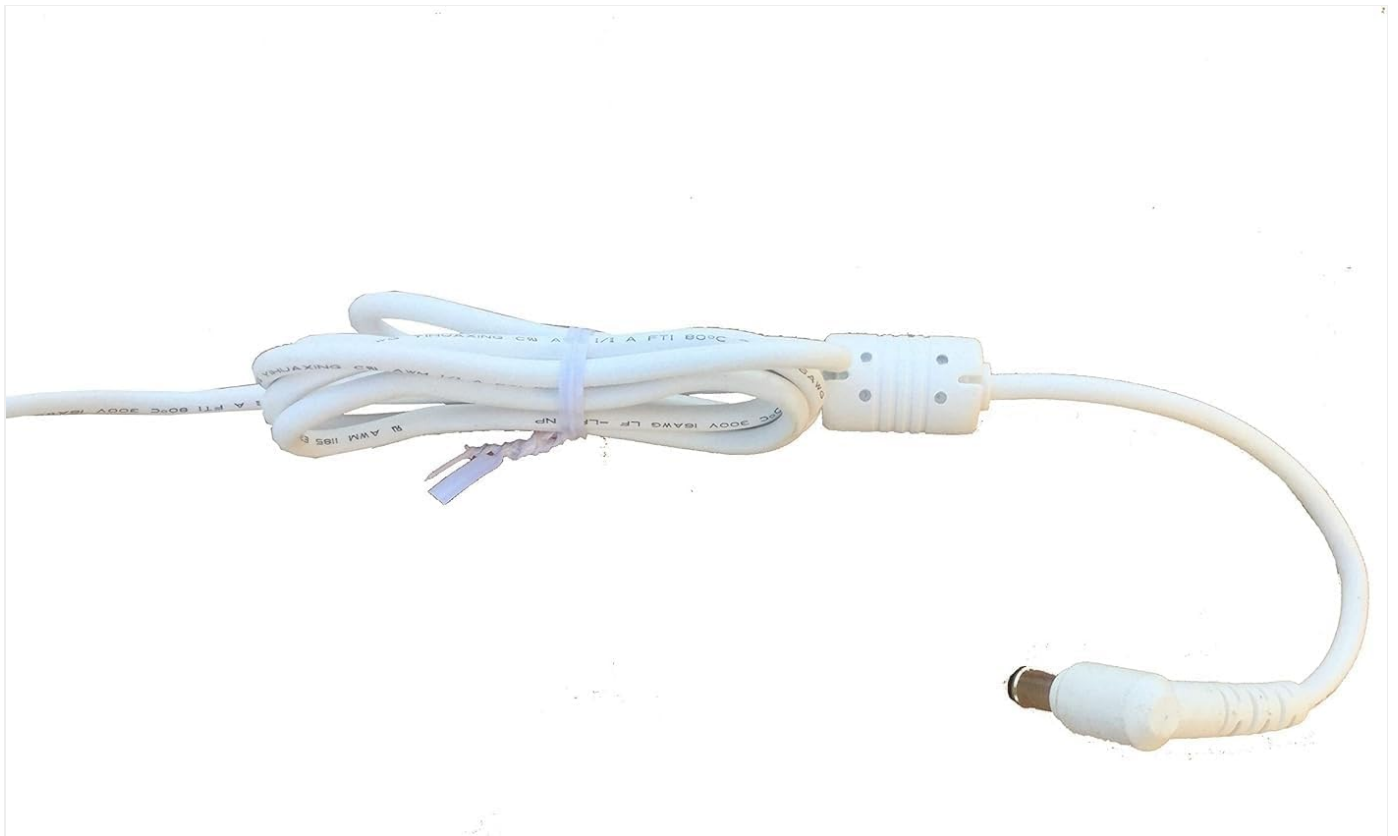
### Product Components:



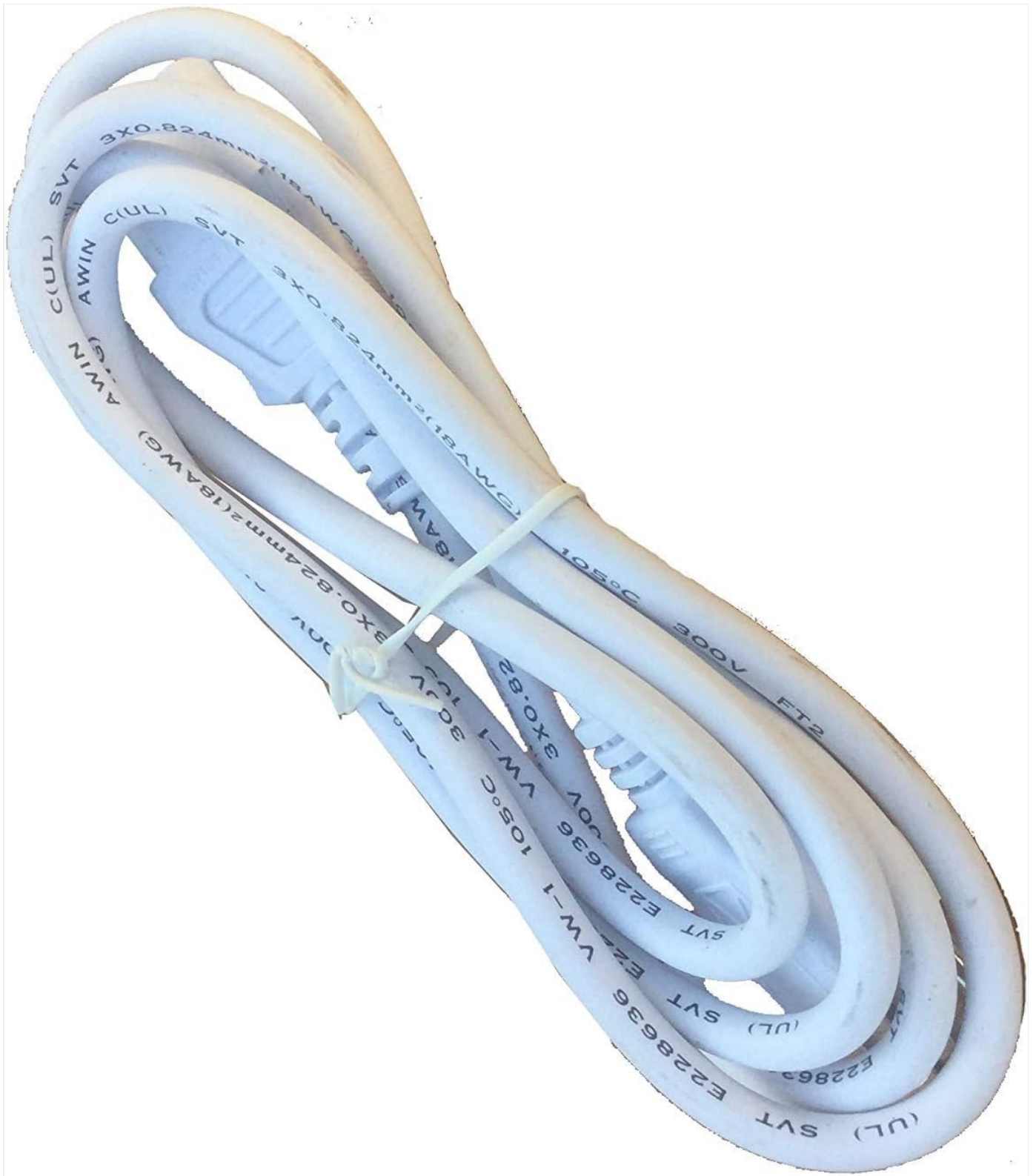
**Figure 2.1:** Top view of the AC adapter unit, showing the main body with various regulatory markings and product information labels. This view highlights the compact design and the integrated output cable.



**Figure 2.2:** Side view of the AC adapter, illustrating the connection points for both the input power cord and the output cable that connects to the monitor. The design emphasizes a streamlined profile.



**Figure 2.3:** Detailed view of the output cable, featuring the barrel connector. This connector is designed to fit securely into the power input port of compatible LG monitors.



**Figure 2.4:** The coiled input power cord, which connects the AC adapter to a standard electrical outlet. The cord is designed for durability and safe power transmission.

### 3. SAFETY INFORMATION

---

To prevent injury or damage to your device, please observe the following safety precautions:

- Do not expose the adapter to water, moisture, or extreme temperatures.
- Do not disassemble or attempt to repair the adapter. Refer servicing to qualified personnel.
- Ensure the power outlet is easily accessible and properly grounded.
- Avoid placing heavy objects on the power cord.

- Unplug the adapter during lightning storms or when unused for extended periods.
- Use only with compatible devices as specified.

## 4. SETUP

---

Follow these steps to set up your AC adapter:

1. Ensure your LG 27U731SA or 27U731SA-W Monitor is powered off.
2. Connect the barrel connector of the AC adapter's output cable firmly into the power input port on your LG monitor.
3. Connect the input power cord to the AC adapter.
4. Plug the other end of the input power cord into a standard 110V AC electrical outlet.
5. You may now power on your monitor.

*Note:* Always ensure connections are secure to prevent intermittent power supply.

## 5. OPERATING INSTRUCTIONS

---

The GT POWER AC Adapter operates automatically once connected to a power source and a compatible device. No user intervention is required for its basic function.

- The adapter will supply the necessary power to your LG monitor when plugged in.
- Its built-in protections (OVP, OCP, SCP) continuously monitor the power output to safeguard your monitor.

## 6. MAINTENANCE

---

Proper maintenance ensures the longevity and optimal performance of your AC adapter:

- **Cleaning:** Disconnect the adapter from the power outlet and the monitor before cleaning. Use a soft, dry cloth to wipe the surface. Do not use liquid cleaners or aerosols.
- **Storage:** When not in use, store the adapter in a cool, dry place, away from direct sunlight and extreme temperatures. Avoid tightly coiling the cables to prevent damage.
- **Inspection:** Periodically inspect the adapter and cables for any signs of damage, such as frayed wires, cracks, or unusual bulges. If damage is found, discontinue use immediately.

## 7. TROUBLESHOOTING

---

If you encounter issues with your AC adapter, refer to the following common problems and solutions:

Problem	Possible Cause	Solution
Monitor does not power on.	<ul style="list-style-type: none"><li>• Adapter not properly connected.</li><li>• Power outlet issue.</li><li>• Faulty adapter or monitor.</li></ul>	<ul style="list-style-type: none"><li>• Ensure all cables are securely plugged in.</li><li>• Test the outlet with another device.</li><li>• Contact support if the issue persists after checking connections and outlet.</li></ul>
Intermittent power to monitor.	<ul style="list-style-type: none"><li>• Loose connection.</li><li>• Damaged cable.</li></ul>	<ul style="list-style-type: none"><li>• Check and re-secure all connections.</li><li>• Inspect cables for damage. Replace if necessary.</li></ul>

Problem	Possible Cause	Solution
Adapter feels excessively hot.	<ul style="list-style-type: none"><li>• Poor ventilation.</li><li>• Overload or internal fault.</li></ul>	<ul style="list-style-type: none"><li>• Ensure the adapter is in a well-ventilated area.</li><li>• Disconnect immediately and contact support if overheating persists or is extreme.</li></ul>

If the problem persists after attempting these solutions, please contact customer support.

## 8. SPECIFICATIONS

Feature	Detail
Brand	GT POWER
Model Number	246
Compatible Devices	LG 27U731SA and 27U731SA-W Monitor, 27 Inch 4K UHD IPS Smart Monitor
Input Voltage	110 Volts (AC)
Connectivity Technology	Cable
Connector Type	Barrel
Special Feature	Short Circuit Protection (OVP, OCP, SCP)
Number of Items	1
UPC	800185032571
ASIN	B0FC26C8HW
Date First Available	February 13, 2018
Manufacturer	GT POWER







## 9. WARRANTY AND SUPPORT

**Warranty:** This GT POWER AC Adapter comes with a One Year Warranty from the date of purchase, covering manufacturing defects.

**Money Back Guarantee:** A 30 Days Money Back guarantee is offered for this product.

**Customer Support:** For technical assistance, warranty claims, or any other inquiries, please contact the seller or manufacturer directly through the platform where the product was purchased. Please have your purchase details and product model number (246) ready when contacting support.



	<p><a href="#">Akyga AK-ND-81 USB-C Power Supply User Manual</a></p> <p>Official user manual for the Akyga AK-ND-81 65W USB-C power supply, detailing specifications, safety precautions, troubleshooting, and usage instructions. Includes information on product features, symbols, and manufacturer details.</p>
	<p><a href="#">Sharkoon SilentStorm Cool Zero PSU - User Manual, Specifications, and Installation Guide</a></p> <p>Comprehensive user manual for the Sharkoon SilentStorm Cool Zero power supply unit (PSU). Includes specifications, installation guide, warranty information, safety rules, and troubleshooting for models 650W, 750W, and 850W.</p>
	<p><a href="#">Corsair AXi Series Digital ATX Power Supply Manual   AX1200i, AX860i, AX760i</a></p> <p>Comprehensive guide to the Corsair AXi Series Digital ATX Power Supply, covering features, technology, installation, safety, and specifications for models AX1200i, AX860i, and AX760i.</p>
	<p><a href="#">LC-Power LC6450 V2.3 Super Silent Series ATX Power Supply - Technical Specifications and Safety</a></p> <p>Detailed information on the LC-Power LC6450 V2.3 Super Silent Series ATX switching power supply, including technical specifications, safety guidelines, and warranty information.</p>
	<p><a href="#">Antec PHANTOM 500 Power Supply User Manual</a></p> <p>Comprehensive user manual for the Antec PHANTOM 500 power supply, detailing its features, installation, protection mechanisms, technical specifications, environmental requirements, and connector pinouts.</p>
	<p><a href="#">Akyga AK-TB-04 User Manual and Technical Specifications for Tablet Power Supply</a></p> <p>Comprehensive user manual and technical specifications for the Akyga AK-TB-04 10W tablet power supply. Learn about its features, safety precautions, troubleshooting, and compatibility with Samsung 30-pin tablets.</p>

