

AINAVI Linux Q5 Multimedia

AINAVI 10.25 inch Touch Screen Multimedia System User Manual

Model: Linux Q5 Multimedia | Brand: AINAVI

1. INTRODUCTION

This manual provides detailed instructions for the installation, operation, and maintenance of your AINAVI 10.25 inch Touch Screen Multimedia System for Audi Q5 (2009-2017). Please read this manual thoroughly before installation and use to ensure proper functionality and safety.

2. SAFETY INFORMATION

- Always disconnect the vehicle's battery before performing any electrical work.
- Ensure all connections are secure to prevent short circuits or malfunctions.
- Do not attempt to modify the device or its components. Unauthorized modifications can void the warranty and pose safety risks.
- Consult a professional if you are unsure about any installation steps.
- Avoid performing software updates over the air (OTA) as this may lead to system bricking. Use hardline updates via USB if available and instructed by technical support.

3. COMPATIBILITY

This multimedia system is exclusively designed for Audi Q5 models manufactured between 2009 and 2017, specifically those equipped with the original Audi multimedia radio system.

Important: This unit is **NOT** compatible with Audi Concert or Audi Symphony original radio systems. Please verify your car's original system before installation.

Compatible System

This unit ONLY works with the original Q5 Audi multimedia radio system.



Audi multimedia



Audi concert



Audi symphony



Audi chorus



Audi cd changer

Image Description: A visual guide illustrating compatible and incompatible Audi radio systems. The "Audi multimedia" system is marked with a green check, while "Audi concert," "Audi symphony," "Audi chorus," and "Audi CD changer" systems are marked with a red 'X', indicating incompatibility.

4. PACKAGE CONTENTS

Please ensure all the following items are included in your package:

- 10.25" Head Unit (1x)
- ISO Wiring Harness Cable (1x)
- Installation Frame (1x)
- LVDS Cable (1x)
- Metal Bracket (1x)
- Screws (8x)
- 24 Hours Engineer Customer Support (Service)



Image Description: A visual representation of all components included in the product package, such as the 10.25-inch head unit, ISO wiring harness, LVDS cable, metal bracket, and screws.

5. SETUP AND INSTALLATION

Follow these steps carefully for proper installation. It is recommended to watch the installation video for a visual guide.

5.1. Installation Video Guide

Your browser does not support the video tag.

Video Description: A detailed video guide demonstrating the step-by-step installation process of the AINAVI Touchscreen CarPlay Auto system into an Audi vehicle. This video covers removal of existing components, wiring, and reassembly.

5.2. Step-by-Step Installation

1. **Remove Faceplate:** Use a pry tool to carefully remove the original faceplate surrounding the display. Disconnect the cable on the right side of the faceplate.
2. **Remove Original Display:** Use a T20 screwdriver to remove the four screws securing the original display. Unplug the display screen connection cable by holding the buckle and gently wiggling it.
3. **Access Passenger Side Panel:** Remove the side cover on the passenger side of the dashboard. Use an 8mm socket to remove the screws securing this panel.
4. **Remove CD Player:** Use a special tool (radio removal keys) to pull out the original CD player from the glove box. Unplug all cables from the back of the CD player.
5. **Remove Storage Box:** Use an 8mm socket tool to remove the screws inside and at the bottom of the storage box to fully remove it. Unplug the storage box connection cable.
6. **Connect Power Harness:** Connect the main power cable from the original host panel to the provided adapter cable. Then, insert the adapter cable into the device's power interface.
7. **Route Cables:** Thread the main power harness from the host compartment and out from under the passenger side. Leave the USB cable outside for easy access. Thread other cables back into the radio compartment from under the passenger side.
8. **Connect Gateway Plug:** Press the buckle to unplug the original car gateway plug (often red) and connect the adapter plug. Plug the other end of the adapter cable back into the original car gateway plug.
9. **Install CD Player:** Plug the CD player plug tightly and reinstall it. **Note:** If the CD player host is not plugged in and installed tightly, the original car information may not be displayed.
10. **Install Storage Box:** Use an 8mm socket tool to install the bottom screws of the storage box.
11. **Prepare for New Display:** Expose the three required cables. Two of these cables should pass through the cover plate.
12. **Install Iron Cover Plate:** Install the iron cover plate. Ensure the protruding side faces outwards and the double-hole

side faces upwards. Tighten the four fixing screws.

13. **Airbag Light Switch:** When installing the decorative faceplate, check if your car has the original car airbag light.

- If the original car has an airbag light, turn the switch on the small circuit board to the **ON** position.
- If the original car does not have an airbag light, turn the switch to the **OFF** position (the other side).



The image is a composite of four parts. The top-left part shows an iPhone screen with various app icons and the text 'Wireless Carplay' below it. The top-right part shows a menu with options like 'Original Car', 'Dash', 'Carplay', 'Android Auto', 'Style', 'EQ', 'Miracast', and 'Airplay', with a blue arrow pointing to a radio interface below it. The bottom part is a large photo of an Audi Q5 dashboard with the new 10.25-inch display installed, showing a rear view camera feed. The text 'Work with Factory Reverse View Camera' is centered below the photo.

Wireless Carplay

Wired Android Auto

Audi original system + Linux system

Work with Factory Reverse View Camera

Image Description: A comparison image showing the Audi Q5 dashboard before and after the installation of the 10.25-inch multimedia screen, highlighting the visual upgrade.

14. **Connect New Display:** Connect the cables from the new display to the corresponding holes.
15. **Install New Display:** Insert and install the device on-site according to the corresponding holes. Install and fix it from top to bottom.

6. OPERATING INSTRUCTIONS

6.1. Wireless CarPlay and Wired Android Auto

The system supports both wireless CarPlay and wired Android Auto, allowing seamless integration with your smartphone.

- **Wireless CarPlay:** Connect your iPhone wirelessly via Bluetooth to access GPS navigation, make calls, send/receive messages, and listen to music.
- **Wired Android Auto:** Connect your Android phone via a USB cable to use similar functionalities.



Image Description: The 10.25-inch touch screen displaying the Apple CarPlay interface, showing icons for Phone, Music, Maps, Messages, Now Playing, Car, Podcasts, Audiobooks, Calendar, and Settings.

6.2. Bluetooth Functionality

The system features Bluetooth v2.1 + EDR and v4.1 Low Energy (LE) for enhanced transmission rate and effective working distance. It supports audio streaming, automatic phone book transfer, and hands-free calls.

Important: When using CarPlay, ensure no device is connected to the Audi original Bluetooth system to avoid conflicts.

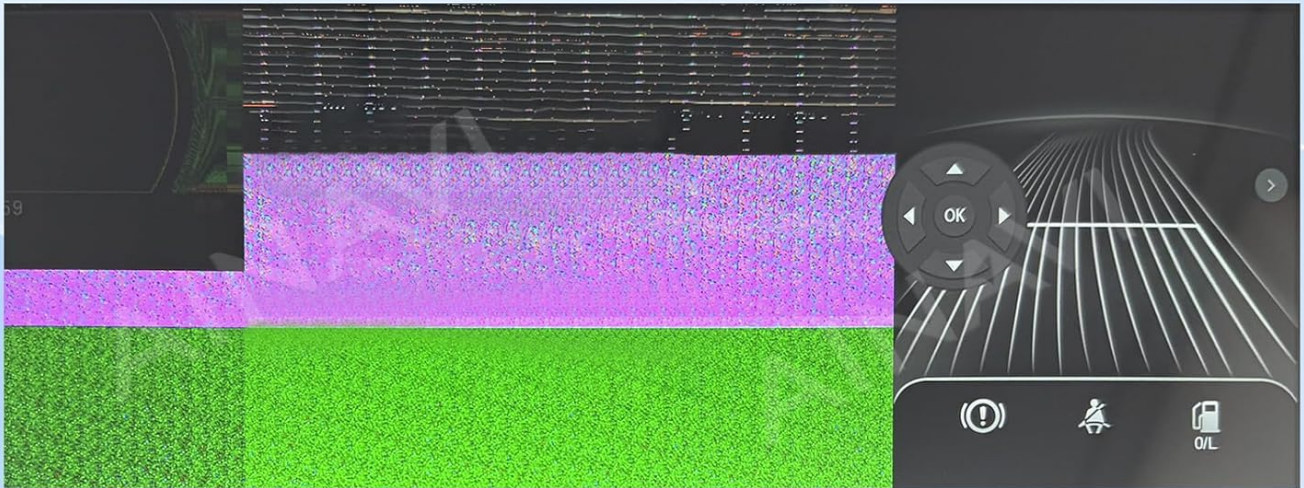
Your browser does not support the video tag.

Video Description: A video demonstrating how to connect the original car's Bluetooth to resolve audio issues for the Q5 multimedia system, ensuring proper sound output.

6.3. Retaining Original Functions

The system operates with dual systems, retaining all original car CD system functions while adding Linux system features. This includes compatibility with:

- iDrive Knob control
- Original Bluetooth
- Original Radio
- OEM rear camera
- Radar system
- Steering wheel controls



If the screen is blurry, refer to the following to set the resolution.

Q5 High Configuration: 800*480



If you tap on the main menu "Original Car" and the display is abnormal, such as a blurry screen, etc, please tap on the small gray floating icon on the right side of the screen, select your original car screen size to display normally, tap "OK" to save and normal use.

Image Description: A collage of images highlighting the retained original Audi Q5 functions after the multimedia system upgrade, such as steering wheel controls, radio, amplifier, CD player, Bluetooth, and backup camera.

6.4. HD Touch Screen and AHD Backup Camera

The 10.25-inch, 1920x720 HD QLED display offers an excellent visual experience. The Linux screen supports AHD 720P backup cameras, providing a clearer image than CVBS cameras.

Applicable Models

For Audi Q5 (2009-2017) with Audi multimedia radio system ONLY!



Image Description: The 10.25-inch screen displaying a clear view from a reverse camera, complete with parking guidelines, demonstrating its compatibility with factory reverse view cameras.

6.5. Smart Voice Control

Once connected to CarPlay or Android Auto, Siri and Google Assistant can be activated by simply saying "Hey Siri" and "Hey Google" or by touching the microphone button. This allows for hands-free navigation, calls, messages, and music control.

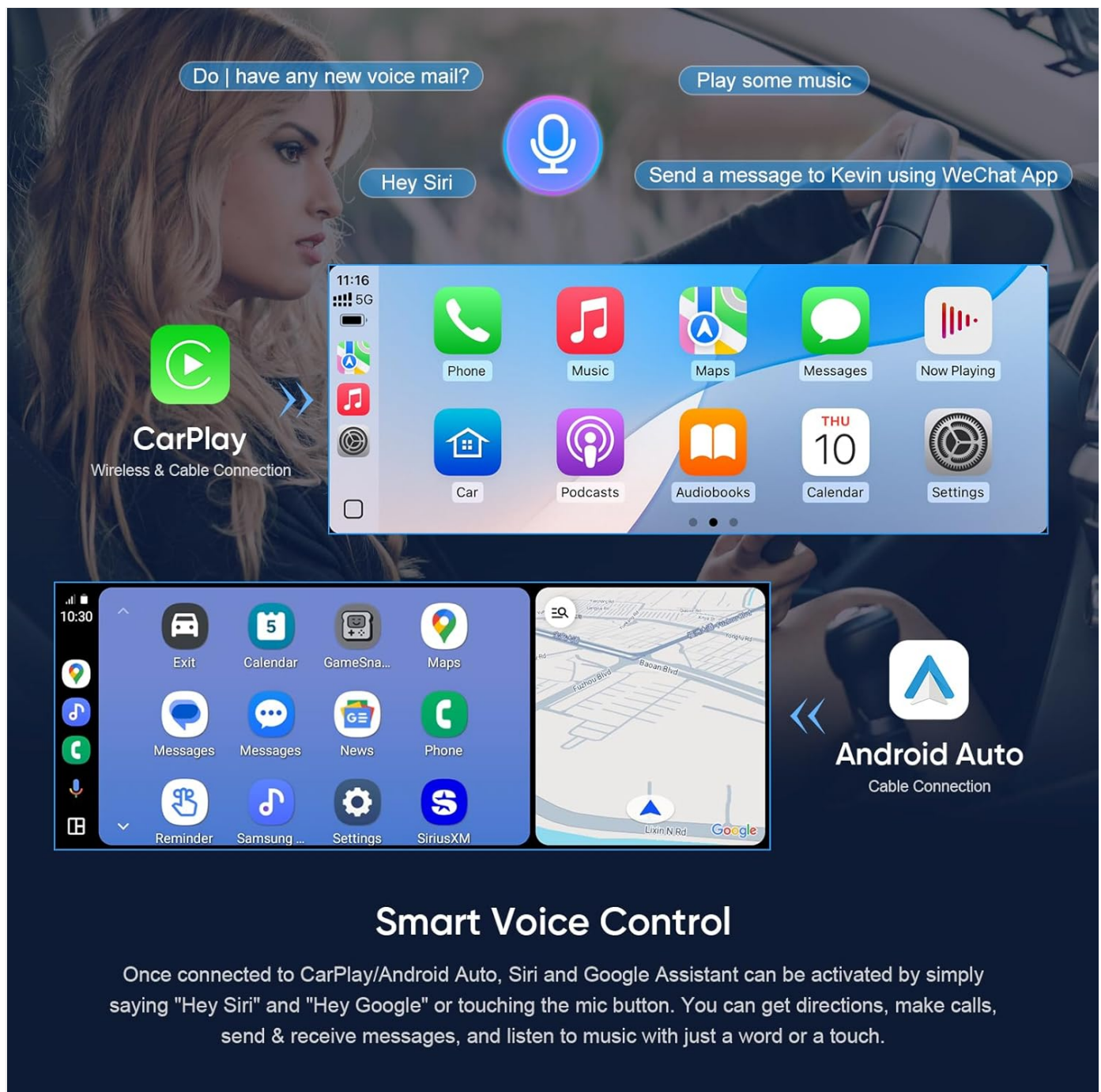


Image Description: A graphic demonstrating the voice control capabilities of the system, showing both CarPlay and Android Auto interfaces with examples of voice commands for navigation, calls, and music.

7. TROUBLESHOOTING

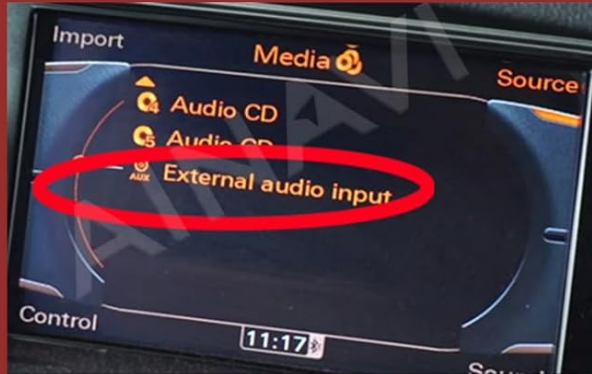
7.1. No Sound Through AUX/AMI

If you experience no sound through the AUX or AMI cables:

1. Go to the system settings on the new display.
2. Navigate to **System**, then **Factory** (password: 8866).
3. Find the "CPAA voice-grade channel" (or similar function) and ensure it is set to **Phone**, not **Car**. The device will restart after this change.
4. After restart, connect your phone's Bluetooth to the original car's Bluetooth (e.g., "Audi MMI 6821"). Confirm pairing on both devices.
5. If the original car has an AMI port and there is still no sound, check if the AMI cable is connected to the AMI port. If

so, unplug the AMI cable and try again.

HOW TO CHECK CAR AUX/AMI?



the car has **"AUX"** option



the car has **"AMI"** option

The new system's audio is transmitted through the car's original AUX port.

Before using the new system, you need to enter the original car system, switch to the original car's AUX, then click on the screen to return to the new system.

If the original car has an AMI port and the new system still has no sound output after the original car is switched to AMI mode, please check whether the AMI cable is connected to the AMI port. If so, unplug the AMI cable and try again.

Image Description: A guide on how to check for AUX or AMI options in the original car system, with instructions on how to resolve sound issues if the AMI cable is incorrectly connected.

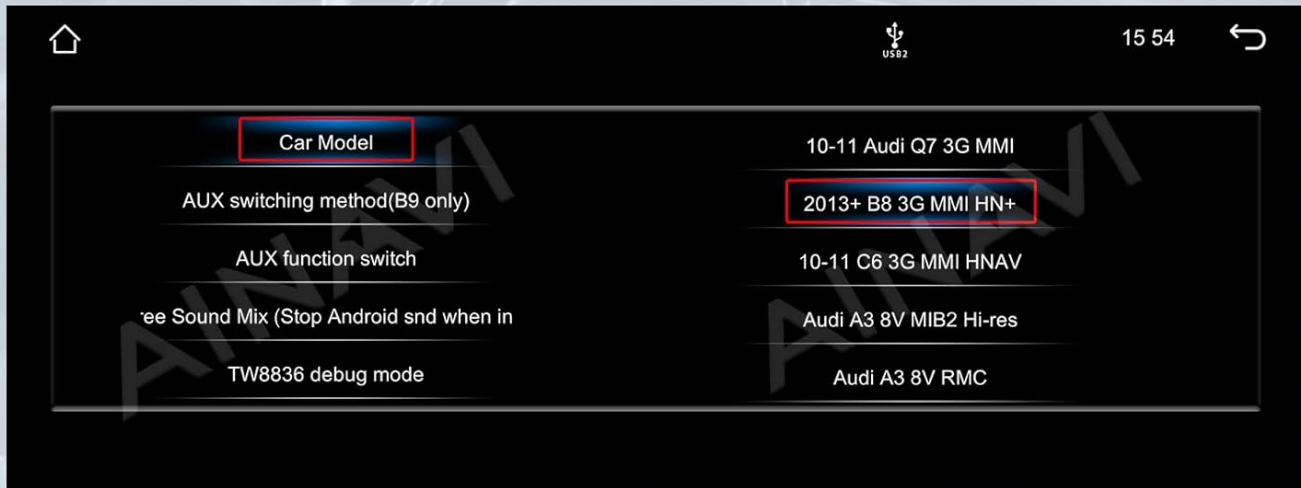
7.2. Blurry Screen or Abnormal Display

If the screen appears blurry or the display is abnormal after installation:

1. Tap on the main menu "Original Car".
2. If the display is abnormal, tap the small gray floating icon on the right side of the screen.
3. Select your original car screen size to display normally (e.g., Q5 High Configuration: 800*480).
4. Tap "OK" to save and normalize the display.



09-12 high-end model:
tap "Settings"--"Factory"(pin code: 8866)--"Car model"--"09-12 B8 3G MMI HNAV"



13-16 high-end model:
tap "Settings"--"Factory"(pin code: 8866)--"Car model"--"2013+B8 3G MMI HN+"

Image Description: A screenshot of the system settings, demonstrating how to adjust the screen resolution to correct blurry or abnormal display issues, with a focus on the 800x480 setting for Audi Q5 High Configuration.

7.3. Original Car Information Not Displayed

Ensure the original CD player host is plugged in and installed tightly. If it is loose or not properly connected, the original car information will not be displayed on the new screen.

7.4. Over-The-Air (OTA) Updates

WARNING: Do not connect the device to Wi-Fi and perform Over-The-Air (OTA) updates. OTA updates may brick the device. Use USB for hardline updates if available and instructed by technical support.

8. SPECIFICATIONS

Feature	Detail
---------	--------

Model Number	Linux Q5 Multimedia
Display Size	10.25 Inches
Operating System	Linux
Resolution	1920x720 HD QLED
Connectivity	Wireless/Wired CarPlay & Android Auto, Bluetooth v2.1 + EDR, v4.1 LE
Voice Command	Microphone, Touchscreen (Siri, Google Assistant)
Backup Camera Support	AHD 720P
Audio Output Mode	Stereo
Item Weight	14.1 ounces (400 Grams)
Package Dimensions	16.22 x 8.78 x 7.05 inches

9. WARRANTY INFORMATION

This AINAVI multimedia system comes with a**12-month warranty** from the date of purchase. Please retain your proof of purchase for warranty claims. The warranty covers manufacturing defects and malfunctions under normal use. It does not cover damage caused by improper installation, misuse, accidents, or unauthorized modifications.

10. TECHNICAL SUPPORT


Our professional technical support team is available to assist you with installation and any operational questions. Please reach out to us if you require assistance.


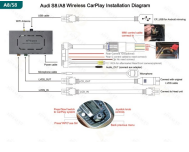



For support, please contact the seller directly through the platform where you purchased the product or refer to the contact information provided with your purchase.



© 2025 AINAVI. All rights reserved.

Related Documents - Linux Q5 Multimedia

	<p>Ainavi Universal Installation Guide for Renault Clio 3 Car Radio</p> <p>Step-by-step installation guide for the Ainavi aftermarket car radio system in a Renault Clio 3. Includes wiring instructions, component identification, and dashboard connection details for Wireless CarPlay and Android Auto multimedia players.</p>
---	--

	<p><u>Instruction Manual: Wireless CarPlay/Android Auto Integration for Audi A8 MMI</u></p> <p>Comprehensive instruction manual for the 27-834 Wireless CarPlay and Android Auto Integration module for Audi A8 MMI (2012-2017 models with 7-inch screen). Covers installation warnings, compatibility, features, package contents, connection diagrams, DIP settings, operation instructions for CarPlay and Android Auto, and other settings.</p>
	<p><u>Audi Wireless CarPlay Installation Guides and Diagrams by Joyeauto</u></p> <p>Comprehensive installation diagrams and instructions for Joyeauto wireless CarPlay multimedia video interfaces, covering various Audi models including S8, A8, A4, A5, Q5, A3, A1, Q3, A6, A7, and MMI 2G systems. Details connections, dip switch settings, and control operations.</p>
	<p><u>CarPlay Integration for Audi MMI 3G System - Instruction Manual 27-830</u></p> <p>Detailed instruction manual for the 27-830 CarPlay integration module for Audi MMI 3G systems, covering installation, features, compatibility, and operation for Apple CarPlay and Android Auto.</p>
	<p><u>ZTUZAUTO MMI 3G Wireless CarPlay & Android Auto Interface for Audi A1/Q3/A4/A5/Q5/A6/Q7</u></p> <p>Enhance your Audi MMI 3G system with ZTUZAUTO's wireless CarPlay and Android Auto integration. This guide details the installation, setup, features, and troubleshooting for upgrading your Audi's infotainment system to support seamless smartphone connectivity, navigation, music, and more.</p>
	<p><u>iSmart auto Wireless CarPlay & Android Auto Module for Audi MMI 3G+ - Product Manual</u></p> <p>Comprehensive product manual for the iSmart auto Wireless CarPlay and Android Auto Smart Module, designed for Audi MMI 3G+ systems. Includes detailed installation guides, feature descriptions, connection methods, DIP switch settings, and troubleshooting tips for upgrading your car's infotainment.</p>