

Manuals.plus /

› HOSTACK /

› HOSTACK 59-inch Farmhouse Buffet Cabinet with Storage Instruction Manual

HOSTACK Farmhouse Sideboard Buffet Cabinet

HOSTACK 59-inch Farmhouse Buffet Cabinet with Storage Instruction Manual

Model: Farmhouse Sideboard Buffet Cabinet

PRODUCT OVERVIEW

The HOSTACK Farmhouse Buffet Cabinet is a versatile storage solution designed for various rooms, including dining rooms, kitchens, living rooms, and entryways. This cabinet features a rustic brown finish with a wood-grained surface and barn-inspired door design, offering both aesthetic appeal and practical functionality.



Image: Overview of the HOSTACK 59-inch Large Buffet Cabinet, highlighting its design and storage capabilities.

- **Ample Storage:** Equipped with three drawers, two double-door cabinets, and two open shelves to organize various items.
- **Multi-functional Design:** Suitable for use as a coffee bar, kitchen sideboard, console table, or TV stand.
- **Durable Construction:** Crafted from high-grade manufactured wood with premium hardware, featuring a reinforced base and an anti-tip kit for stability and safety.
- **Aesthetic Appeal:** Rustic brown finish with a wood-grained surface and barn door design complements various interior styles.

ASSEMBLY INSTRUCTIONS

This buffet cabinet requires assembly. Detailed instructions and all necessary parts are included in the packaging. Please follow the numbered steps carefully to ensure correct and safe assembly.

Before You Begin:

- Unpack all components and verify against the parts list provided in the instruction manual.
- Ensure you have adequate space for assembly.
- It is recommended to have a second person assist with assembly for ease and safety.
- Organize all hardware (screws, fasteners, etc.) into labeled containers to prevent loss and confusion.

Key Assembly Tips:

- Pay close attention to the illustrations in the provided manual.
- Ensure all two-piece fasteners are tightened securely and click into place to prevent components from detaching.
- Do not overtighten screws unless specified, as this can damage the wood.
- Install the anti-tip kit as instructed to enhance stability and safety, especially in households with children or pets.



Image: Illustration of the cabinet's sturdy construction, including a thickened base, anti-tipping device, and ease of assembly.

USAGE AND STORAGE

The HOSTACK buffet cabinet is designed for versatile use across various rooms and purposes. Its ample storage capacity allows for organized placement of numerous household items.

Storage Features:

- **Three Drawers:** Ideal for cutlery, small kitchen gadgets, linens, or personal items.
- **Double-Door Cabinets:** Provide enclosed storage for larger items, dishes, or appliances. Adjustable shelves inside allow for customizable space.
- **Open Shelves:** Suitable for displaying decorative items, cookbooks, or frequently accessed kitchen essentials.



Ample Storage Space

Adjustable shelves provide customizable space for different sized items



Plates



Tableware



Cups



Microwave



Coffee Maker



Condiments



Decorations



Plants

Image: Depiction of the cabinet's ample storage space, showcasing adjustable shelves and various items that can be stored, such as plates, tableware, and small appliances.



Deep Drawers and 59" Wide Tabletop

Providing space for your various tableware like plates, toaster or coffee makers



Image: Close-up view of the deep drawers and wide tabletop, illustrating their capacity for storing cutlery, small items, and accommodating kitchen appliances.

Recommended Uses:

- **Dining Room:** Store dinnerware, serving dishes, and table linens.
- **Kitchen:** Function as a coffee bar, microwave stand, or extra pantry space.
- **Living Room/Entryway:** Use as a console table for decorative items, books, or entryway essentials.



Image: Visual examples of the cabinet's versatility, showing it placed in a dining room, kitchen, living room, and entryway.

MAINTENANCE

To ensure the longevity and appearance of your HOSTACK buffet cabinet, follow these simple maintenance guidelines:

- **Cleaning:** Wipe surfaces with a soft, damp cloth. Avoid harsh chemicals or abrasive cleaners, which can damage the finish.
- **Spills:** Clean up spills immediately to prevent staining or water damage.
- **Heat and Moisture:** Avoid placing hot items directly on the surface. Use coasters or protective pads. Protect from excessive moisture.
- **Sunlight:** Prolonged exposure to direct sunlight may cause fading or discoloration.
- **Hardware:** Periodically check and tighten all screws and fasteners to maintain structural integrity.

TROUBLESHOOTING

Door Alignment Issues:

If the cabinet doors are not aligning flat or have gaps after assembly, adjustments can be made using the hinges. Refer to the diagram below for guidance on adjusting the door position.

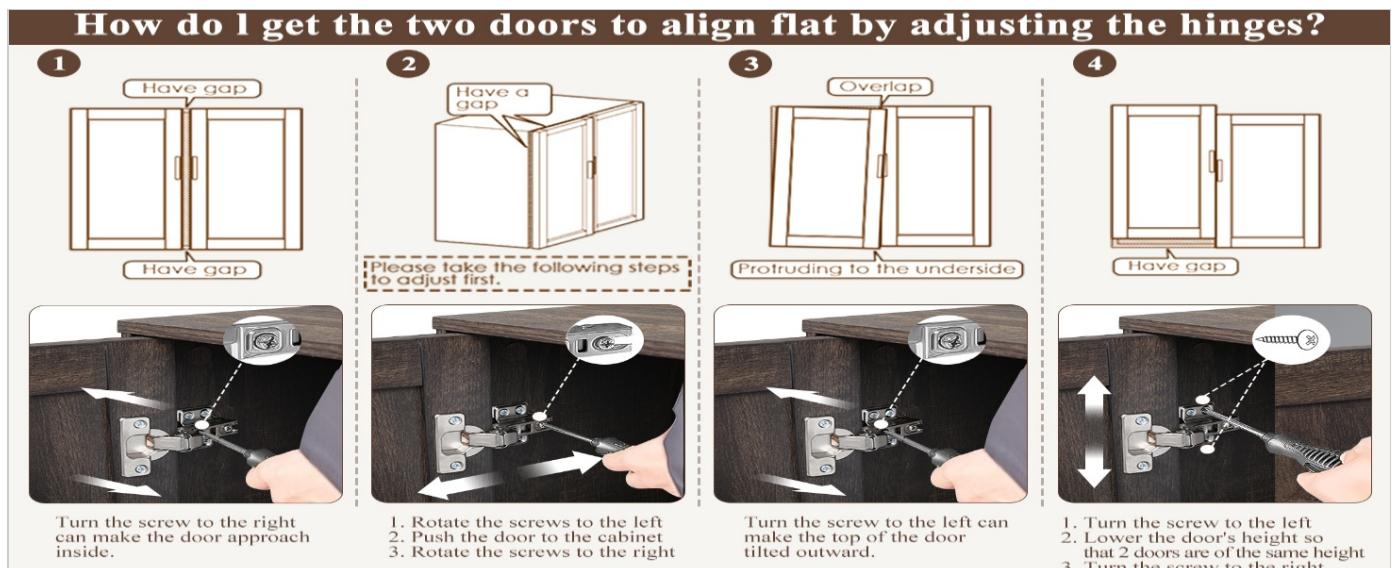


Image: Detailed instructions and diagrams for adjusting cabinet door hinges to correct alignment issues such as gaps, overlapping, or

tilting.

1. **Adjusting Inward/Outward (Gap):** Turn the screw to the right to make the door approach inward. Turn the screw to the left to make the door tilt outward.
2. **Adjusting Side-to-Side (Gap/Overlap):** Rotate the screws to the left to push the door to the cabinet. Rotate the screws to the right to pull the door away.
3. **Adjusting Height:** Turn the screw up or down to lower or raise the door's height, ensuring both doors are at the same level.

General Issues:

- **Loose Components:** If any part feels loose, re-check the corresponding fasteners and tighten them. Do not force.
- **Missing Parts:** If you find any parts missing during assembly, please contact customer support with your product model and a description of the missing part.

SPECIFICATIONS

Feature	Detail
Brand	HOSTACK
Model Name	Farmhouse Sideboard Buffet Cabinet
Color	Rustic Brown
Product Dimensions (L x W x H)	59.06"W x 15.16"D x 32.09"H
Item Weight	74.5 pounds
Material	Manufactured Wood
Number of Drawers	3
Number of Shelves	2 (adjustable)
Door Style	Barn Door
Mounting Type	Floor Mount
Assembly Required	Yes
Weight Limit (Top Surface)	275 lbs
Weight Limit (Open Shelf)	67 lbs
Weight Limit (Each Drawer)	25 lbs



Image: Detailed diagram showing the overall dimensions and maximum weight capacities for the counter space, shelves, and drawers.

