

[Manuals.plus](#) /

> [Yespick](#) /

> Yespick 150W Mini Moving Head Light User Manual

## Yespick ZQ02623

# Yespick 150W Mini Moving Head Light

Model: ZQ02623

## 1. INTRODUCTION

---

Thank you for choosing the Yespick 150W Mini Moving Head Light. This versatile stage lighting fixture is designed to create dynamic and vibrant effects for various events, including parties, weddings, family gatherings, and professional stage performances. Featuring multiple light sources and control modes, it offers a comprehensive lighting solution.



The Yespick 150W Mini Moving Head Light, showcasing its compact design and included remote control.

## 2. SAFETY INFORMATION

- Always connect the device to a grounded power outlet.
- Ensure proper ventilation around the unit to prevent overheating.
- Do not expose the device to rain or moisture. This product is for indoor use only.
- Avoid direct eye exposure to the light source.
- Disconnect power before cleaning or performing any maintenance.
- Keep out of reach of children.

## 3. PACKAGE CONTENTS

Please check the package to ensure all items are present and in good condition:

## Titel: Was ist im Paket enthalten?

1. Netzkabel \*1
2. Moving Head Light \*1
3. Fernbedienung \*1
4. Signalkabel \*1
5. Hakenzubehör \*1
6. Bedienungsanleitung \*1



Contents included in the product package.

1. Moving Head Light (x1)
2. Power Cable (x1)
3. Remote Control (x1)
4. Signal Cable (x1)
5. Hook Accessory (x1)
6. Instruction Manual (x1)

## 4. PRODUCT OVERVIEW

The Yespick Mini Moving Head Light integrates multiple lighting elements to deliver diverse effects:

- **6 RGBW Beam Lamp Beads:** For vibrant color beams.
- **1 Disco Ball Lamp Bead:** Creates a classic disco ball effect.
- **Red & Green Starry Sky Lights:** 100mW red and 50mW green lasers for starry patterns.
- **Strobe Lights:** Two golden and two white strobe lights for dynamic flashing effects.



Key lighting components of the device.

## 5. SETUP

### 5.1 Initial Placement

Place the light on a stable, flat surface or mount it securely using the provided hook accessory. Ensure there is sufficient space around the unit for ventilation.

### 5.2 Power Connection

Connect the power cable to the power input port on the rear of the unit, then plug it into a suitable power outlet.

### 5.3 DMX Connection (Optional)

For DMX control, connect a DMX cable from your DMX controller's output to the DMX IN port on the light. If linking multiple units, connect the DMX OUT of the first unit to the DMX IN of the next.



Control panel and rear connection ports.

## 6. OPERATING MODES

The Yespick Mini Moving Head Light offers five control modes for flexible operation:

# Luz De Escenario De Disco De 150W Con 6 Leds RGBW




Visual representation of the various control modes.

## 6.1 Remote Control Mode

Use the included remote control for convenient, one-click switching of light effects and modes. Refer to the remote control function table below:

OFF/ON	Das Licht ausschalten/einschalten
DMX	D-M-X Modus
AUTO	Selbstfahrender Modus
Speed+/-	Die Geschwindigkeit des Selbstfahrenden Modus einstellen
Voice	Schallaktivierter Modus
Mic+/-	Die Schallsensibilität einstellen
1-4	Rot/Grün/Blau/Weiß Strahllicht
5	Rot und Grün Licht
6-7	2 Selbstfahrende Modi
8-9	2 Schallaktivierte Modi



Remote control button functions.

Button	Function
OFF/ON	Turn the light off/on
DMX	DMX Mode
AUTO	Automatic Mode
Speed+/-	Adjust speed in Automatic Mode
Voice	Sound Activated Mode
Mic+/-	Adjust sound sensitivity
1-4	Red/Green/Blue/White Beam Light
5	Red and Green Light
6-7	2 Automatic Modes
8-9	2 Sound Activated Modes

## 6.2 Automatic Mode

In Automatic mode, the light cycles through pre-programmed effects without external input. This mode is ideal for hands-free operation.

## 6.3 Sound Activated Mode

The light reacts to music or sound, changing patterns and colors in sync with the beat. Adjust sensitivity using the remote or control panel.

## 6.4 Master-Slave Mode

Connect multiple units via DMX cables. Set one unit as the master and others as slaves. The slave units will mirror the master's effects, creating synchronized lighting displays.

## 6.5 DMX512 Mode (24 Channels)

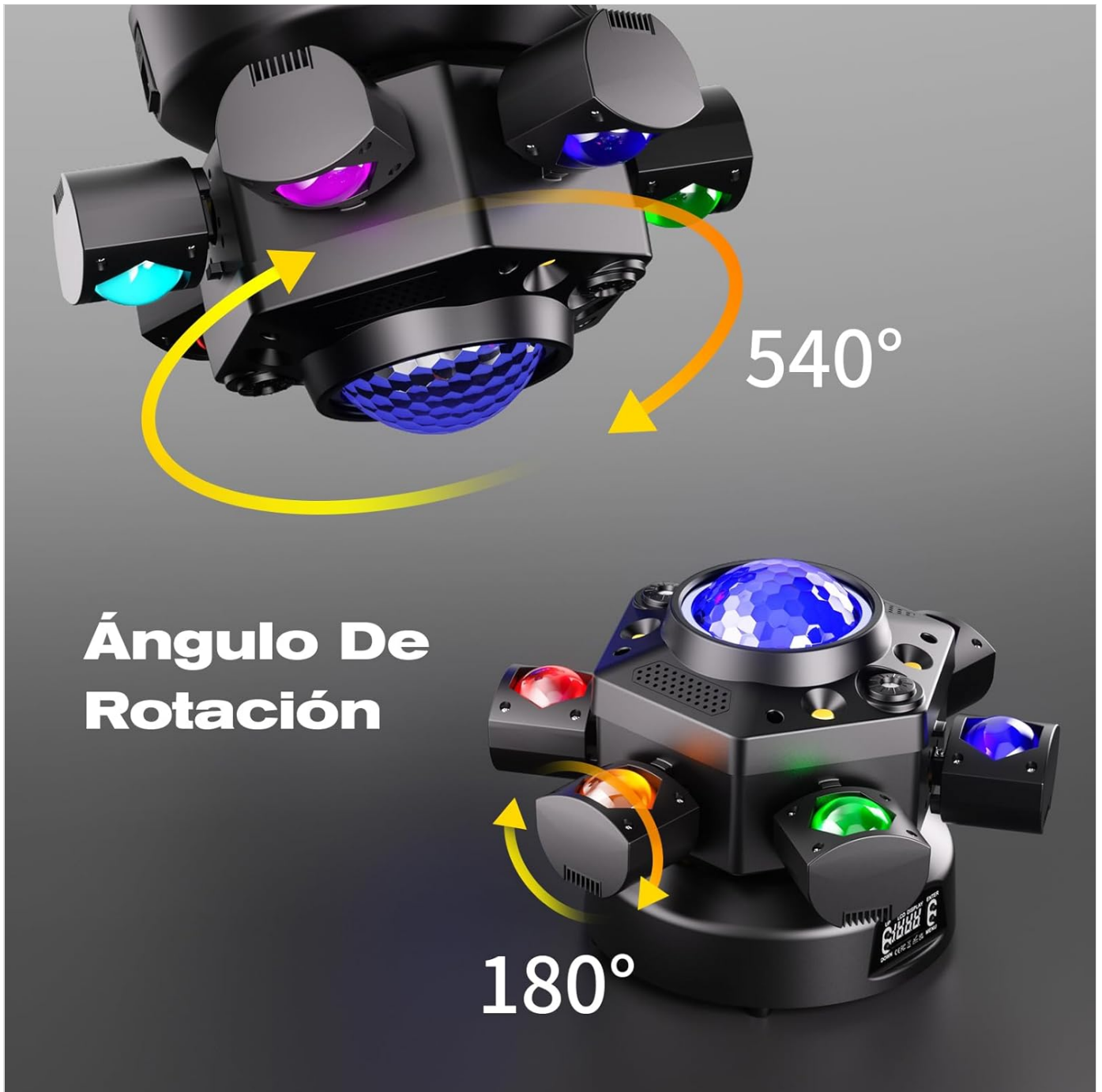
For professional control, connect the light to a DMX512 controller. This allows for precise programming of individual parameters such as color, movement, dimming, and strobe effects. The unit supports 24 DMX channels.



Overview of available control models.

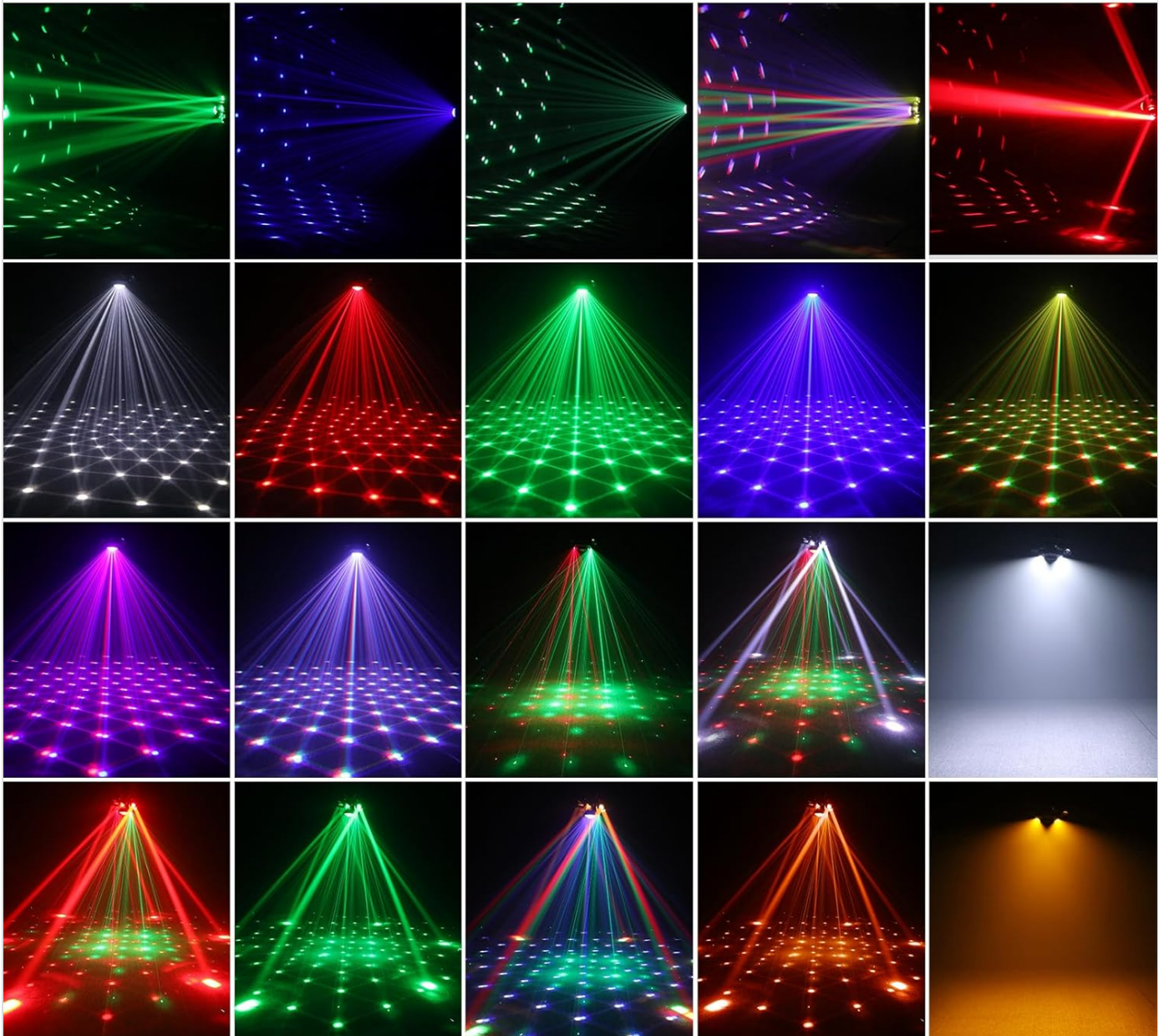
## 6.6 Movement and Dimming

The moving head light features a 540° horizontal pan and 180° vertical tilt rotation, allowing for flexible beam positioning. It also supports 0-100% linear dimming to adjust light brightness as needed.



Rotation angles for flexible light positioning.

# Efectos Multifuncionales Combinados



Examples of multifunctional combined effects.

## 7. MAINTENANCE

### 7.1 Cleaning

Regularly clean the lens and housing with a soft, dry cloth to maintain optimal light output and appearance. Do not use abrasive cleaners or solvents.

### 7.2 Storage

When not in use, store the light in a cool, dry place, away from direct sunlight and extreme temperatures. It is recommended to keep the original packaging for storage and transport.

## 8. TROUBLESHOOTING

- **No Power:** Ensure the power cable is securely connected to both the unit and the power outlet. Check the power

outlet for functionality.

- **No Light Output:** Verify the unit is powered on and not in standby mode. Check the selected operating mode.
- **Remote Control Not Working:** Ensure the remote's battery is not depleted. Point the remote directly at the unit's IR receiver.
- **No DMX Control:** Check DMX cable connections. Ensure the DMX address is correctly set on the unit and matches your controller's settings.

## 9. SPECIFICATIONS



Product dimensions and weight.

Feature	Detail
Brand	Yespick
Model Number	ZQ02623

Feature	Detail
Manufacturer	Shenzhen Zhuogiong Technology Co., Ltd.
Dimensions (L x W x H)	37 x 36 x 28 cm (Packaged)
Item Weight	3.7 Kilograms (Packaged) / 2.6 Kilograms (Unit)
Light Source	RGBW Beam LEDs, Disco Ball LED, Red/Green Lasers, Strobe LEDs
Control Modes	Remote Control, Voice Control, Automatic, Master-Slave, DMX512 (24 Channels)
Pan Rotation	540°
Tilt Rotation	180°
Dimming	0-100% Linear Dimming
Strobe Frequency	0-20 Hz
Batteries Required	No
Country of Origin	China

## 10. WARRANTY AND SUPPORT

This product comes with a standard manufacturer's warranty. For warranty claims, technical support, or any inquiries, please contact your retailer or the manufacturer directly using the contact information provided at the point of purchase. Please retain your proof of purchase for warranty purposes.