

AIKELA ZJ-027

AIKELA ZJ-027 5-in-1 Induction Bluetooth Speaker User Manual

Model: ZJ-027 | Brand: AIKELA

- [Overview](#)
- [Introduction](#)
- [Safety Information](#)
- [Package Contents](#)
- [Product](#)
- [Setup](#)
- [Operation](#)
- [Maintenance](#)
- [Troubleshooting](#)
- [Specifications](#)
- [Warranty & Support](#)

1. INTRODUCTION

Thank you for purchasing the AIKELA ZJ-027 5-in-1 Induction Bluetooth Speaker. This versatile device combines a wireless induction speaker, Bluetooth speaker, power bank, phone stand, and LED light, designed to enhance your audio and mobile experience. Please read this manual carefully to ensure proper use and optimal performance.

2. SAFETY INFORMATION

- Keep the device away from water, moisture, and extreme temperatures.
- Do not attempt to disassemble or repair the device yourself. Contact customer support for assistance.
- Use only the provided charging cable or a certified equivalent.
- Avoid placing heavy objects on the device.
- Keep out of reach of children.

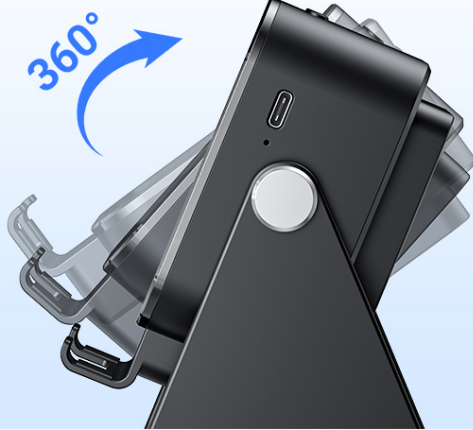
3. PACKAGE CONTENTS

Verify that all items are present in your package:

- AIKELA 5-in-1 Induction Speaker (Model: ZJ-027) x 1
- Type-C Charging Cable x 1
- User's Manual x 1
- Quick Start Guide x 1

Adjustable Stand

360° vertical rotation to meet your various angle needs



Non-Slip Base

Widened non-slip base ensures stability Even for iPad /tablet, it won't slide

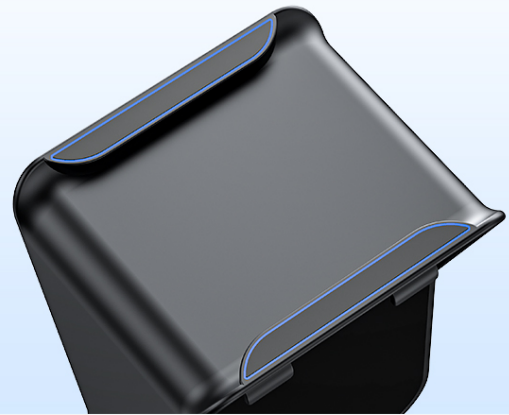


Image: What you will receive with your AIKELA ZJ-027 speaker.

4. PRODUCT OVERVIEW

The AIKELA ZJ-027 is a multifunctional device designed for convenience and enhanced audio. It features:

- **Induction Speaker:** Play audio by simply placing your phone on the stand, no Bluetooth pairing needed.
- **Bluetooth Speaker:** Connect wirelessly via Bluetooth 5.3 for stable, high-quality audio.
- **Phone Stand:** Adjustable 360° vertical rotation for optimal viewing angles.
- **Power Bank:** Built-in 3500mAh battery for emergency phone charging.
- **LED Light:** Colorful ambient lighting with multiple modes.

5 in 1 Induction Speaker

with high-quality sound



Induction
Speaker



Bluetooth
Speaker



Phone
Stand



Emergency
Charge



LED
Light

Image: The AIKELA ZJ-027 5-in-1 Induction Speaker in use, highlighting its multiple functions.

Induction Speaker

No Bluetooth required. Just place your
phone on stand to play

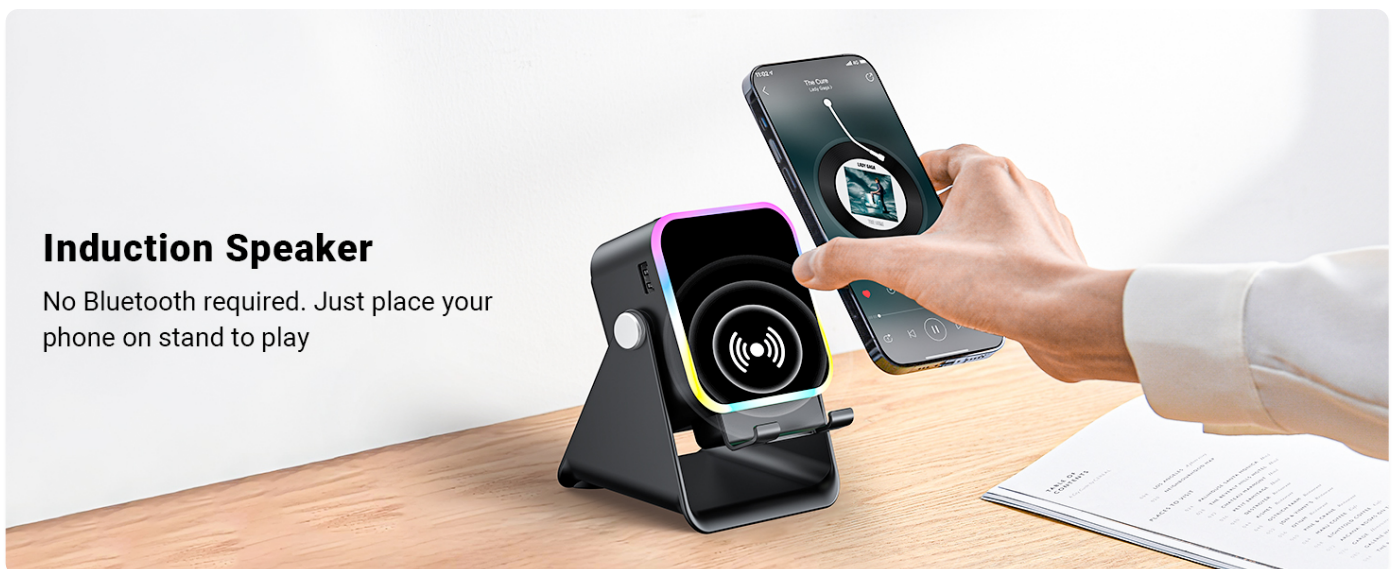


Image: Detailed view of the speaker driver, illustrating its capability for massive, booming sound with crystal-clear quality.

5. SETUP

5.1 Charging the Speaker

Before first use, fully charge the speaker. Connect the provided Type-C cable to the charging port on the speaker and the other end to a USB power adapter (not included). A full charge takes approximately 2 hours and provides 5-8 hours of playtime, depending on volume levels.

Immersive Sound Effect

Listen to music/show/podcast
while cooking



Image: Battery life and charging time information.

5.2 Adjusting the Phone Stand

The integrated phone stand can be rotated 360° vertically to achieve your desired viewing angle. Ensure the non-slip silicone on the base, back, and slot keeps your phone secure.



Image: Adjustable stand with 360° rotation and non-slip base for stability.

6. OPERATION

6.1 Power On/Off

Long press the power button () to turn the device on or off.

6.2 Switching Modes (Induction / Bluetooth)

After powering on, the device will typically start in Induction Mode. To switch between Induction Mode and Bluetooth Mode, short press the 'M' button.

Your browser does not support the video tag.

Video: Demonstrates how to use both Induction and Bluetooth modes, including switching between them and proper phone placement.

6.3 Induction Mode

In Induction Mode, no Bluetooth connection is required. Simply place your smartphone correctly on the stand. The speaker's inductive chip will capture and amplify audio directly from your phone.

- **Phone Placement:** Ensure your phone is placed correctly on the stand, typically in portrait orientation, for optimal sound transfer.
- **Volume Adjustment:** Adjust your phone's volume to 50% or higher for the best playback experience. You can also use the volume buttons on the speaker.
- **Compatibility:** Induction mode is primarily compatible with smartphones. It does not support iPads or tablets.
- **Auto-Off:** The speaker will automatically turn off after 10 minutes of standby in Induction Mode.



Image: Guide on how to correctly place your phone and adjust volume for Induction Mode.

6.4 Bluetooth Mode

For wireless audio streaming, switch to Bluetooth Mode:

1. Long press the power button to turn on the speaker.
2. Short press the 'M' button to switch to Bluetooth Mode (you will hear an audible prompt).
3. On your phone or tablet, go to Bluetooth settings and search for "ZJ-027".
4. Select "ZJ-027" to pair. For Android devices, enable "Sync volume with phone" in Bluetooth settings after pairing for optimal control.
5. Once connected, you can play audio from your device through the speaker.

In Bluetooth mode, you can place your phone horizontally or vertically on the stand. The Bluetooth range is approximately 10 meters.

2 Modes - Induction Mode and Bluetooth Mode



Image: Visual representation of Induction Mode (no Bluetooth) and Bluetooth Mode (10m range).

6.5 LED Light Functions

The speaker features colorful LED lights:

- **Switch Lighting Modes:** Single-click the 'M' button to cycle through different light colors and patterns.
- **Turn On/Off Lights:** Long-press the 'M' button to turn the LED lights on or off.

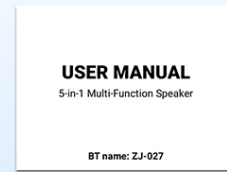
What You Will Receive



Induction Bluetooth Speaker
with Stand*1



Type-C Cable*1



User's Manual*1

Image: Multiple light strip patterns to choose from.

6.6 Power Bank Function (Emergency Charge)

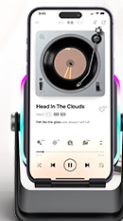
The speaker can act as an emergency power bank for your phone. Connect your phone's charging cable (not included) to the USB-A output port on the speaker and to your phone. This is a wired charging function, not wireless charging.

How To Use Induction Speaker Correctly

Note: Please adjust the phone's volume to 50% and reposition the phone for optimal effect



Wrong Placement



Correct Placement



Image: The speaker's 3500mAh power bank function for emergency charging.

7. MAINTENANCE

- Clean the device with a soft, dry cloth. Do not use abrasive cleaners or solvents.
- Avoid exposing the device to direct sunlight for extended periods.
- Store the device in a cool, dry place when not in use.

8. TROUBLESHOOTING

Q1: What should I do if the volume is too low?

- If in Induction mode, place the phone correctly on the holder, and then adjust the phone's volume to 50% or higher.
- If you are using an Android device and using Bluetooth mode, first pair the Bluetooth device. Then enable "Sync volume with phone" in your phone's Bluetooth settings.

Q2: What should I do if the sound cuts in and out in Induction mode?

- Ensure the phone is correctly placed on the holder.
- The working principle of Induction mode is that the speaker's inductive chip captures audio from the phone and amplifies it through the speaker. The louder the phone's volume, the louder the speaker's output. Therefore, we recommend setting the phone's volume to 50% or higher to ensure uninterrupted playback.

9. SPECIFICATIONS

Feature	Detail
Model Name	ZJ-027
Speaker Type	Portable Speaker
Special Features	Bluetooth Speaker, Built-In Powerbank, Induction Speaker, LED Light, Phone Stand
Compatible Devices	Android Phone, iPad, iPhone
Color	Black
Product Dimensions	5"D x 2"W x 3"H
Item Weight	0.34 Kilograms (12 ounces)
Maximum Bluetooth Range	10 Meters
Battery	1 A battery required (included)
Manufacturer	AIKELA
Speaker Maximum Output Power	1 Watts
Connectivity Technology	Bluetooth, Induction
Material	Acrylonitrile Butadiene Styrene (ABS)

10. WARRANTY & SUPPORT

AIKELA provides 12 months of support for your Phone Amplifier Speaker. If you encounter any issues or have questions, please contact customer service. You can typically find contact information by navigating to 'Find Order' on the platform where you purchased the product.

