



[Manuals.plus](#) /

› [PAXA](#) /

› PAXA M100 Clip On Earbuds User Manual

## PAXA M100

# PAXA M100 Clip On Earbuds User Manual

Jewelry Earbuds with Touch Screen Open-Ear Design

## 1. INTRODUCTION

---

Thank you for choosing the PAXA M100 Clip On Earbuds. These innovative open-ear earbuds combine high-fidelity audio with a unique jewelry-inspired design, featuring a smart touchscreen charging case for intuitive control. This manual provides essential information for setup, operation, and maintenance to ensure optimal performance and longevity of your device.



Image: The PAXA M100 Clip On Earbuds and their charging cases in purple and pink variations.

## 2. PACKAGE CONTENTS

Please verify that all items are present in your package:

- PAXA M100 Clip On Earbuds (Left and Right)
- Smart Touchscreen Charging Case
- USB-C Charging Cable
- User Manual
- Removable Butterfly Earcuffs (pre-attached or separate)

## 3. PRODUCT FEATURES

- **Jewelry-Inspired Elegance:** Features a removable butterfly earcuff for customizable style, blending fashion with audio technology.
- **Feather-Light Comfort:** Ergonomic clip-on design ensures a secure, pressure-free fit for extended

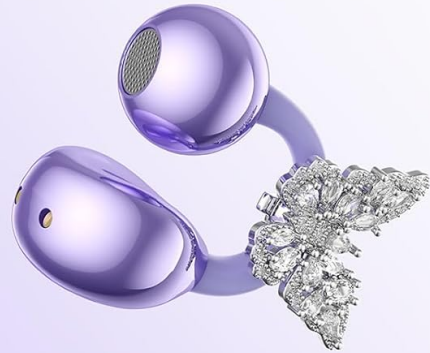
wear, suitable for various ear shapes.

- **Vibrant Sound Quality:** Engineered for clear, balanced audio with enhanced vocals, smooth mids, and optimized bass for diverse listening experiences.
- **Smart Touchscreen Charging Case:** Integrated touchscreen allows direct control over volume, track skipping, battery check, and EQ modes without needing a phone.
- **Seamless Connectivity:** Equipped with Bluetooth 5.4 for stable and efficient wireless pairing.
- **Durability:** IPX5 sweat resistance provides protection against sweat and light splashes.

## Not Just Earbuds A Wearable Work of Art



## Open Fit Comfort



## Stylish Jewelry Ear Cuff



Image: Visual representation of the PAXA M100's jewelry-inspired design, open-fit comfort, and stylish earcuff.

# LED Smart Touch Screen

Easy Touch Control, No Phone Needed



Image: The smart touchscreen charging case displaying its various control functions.

## 4. SETUP

### 4.1 Charging the Earbuds and Case

Before first use, fully charge the PAXA M100 earbuds and charging case.

1. Place the earbuds into the charging case, ensuring they are correctly seated.
2. Connect the USB-C charging cable to the charging port on the case and the other end to a USB power adapter (not included) or a computer's USB port.
3. The touchscreen on the case will display the charging status. A full charge typically takes approximately 1.5-2 hours for the earbuds and 2-3 hours for the case.

### 4.2 Pairing with Your Device

The PAXA M100 earbuds automatically enter pairing mode when first opened or when disconnected from a previously paired device.

1. Ensure the earbuds are in the charging case and the case lid is open.
2. On your smartphone or Bluetooth-enabled device, navigate to the Bluetooth settings.
3. Search for new devices. Select "PAXA M100" from the list of available devices.
4. Once connected, the touchscreen on the charging case will indicate successful pairing, and you will

hear an audio prompt from the earbuds.

*Note: The earbuds will automatically reconnect to the last paired device when removed from the case, if Bluetooth is enabled on the device.*

### 4.3 Wearing the Earbuds

The PAXA M100 features an open-ear clip-on design for comfort and awareness of your surroundings.

1. Gently clip the earbud onto the outer part of your ear, ensuring the speaker portion is positioned near your ear canal.
2. Adjust the earbud slightly until it feels secure and comfortable. The flexible design allows for minor adjustments to fit various ear shapes.
3. The removable butterfly earcuff can be attached or detached based on your preference.



Image: A user demonstrating the comfortable fit of the PAXA M100 earbuds.

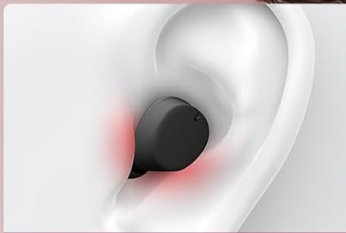
# Ergonomic Design for All Day Comfort



Cartilage Pain



Eardrum Discomfort



Unstable Fit



Image: Comparison of uncomfortable earbud designs versus the ergonomic, comfortable design of the PAXA M100.

## 5. OPERATING INSTRUCTIONS

### 5.1 Earbud Touch Controls

The PAXA M100 earbuds feature touch-sensitive areas for convenient control of audio playback and calls.

Action	Left Earbud	Right Earbud
Play/Pause	Single Tap	Single Tap
Next Track	Double Tap	Double Tap
Previous Track	Triple Tap	Triple Tap
Volume Up	Press and Hold (Right)	Press and Hold (Right)
Volume Down	Press and Hold (Left)	Press and Hold (Left)
Answer/End Call	Single Tap	Single Tap

Action	Left Earbud	Right Earbud
Reject Call	Press and Hold	Press and Hold
Activate Voice Assistant	Quadruple Tap	Quadruple Tap

## 5.2 Touchscreen Case Functions

The charging case's touchscreen provides direct access to various settings and information.

- **Battery Level:** Displays the remaining battery percentage for the case and individual earbuds.
- **Music Control:** Play, pause, skip tracks, and adjust volume directly from the screen.
- **EQ Modes:** Select from preset equalizer modes to customize your audio experience.
- **Find My Earbuds:** Activate a sound from the earbuds to help locate them if misplaced nearby.
- **Settings:** Access additional settings such as screen brightness, language, and factory reset options.

## 6. MAINTENANCE

Proper maintenance ensures the longevity and performance of your PAXA M100 earbuds.

- **Cleaning:** Use a soft, dry, lint-free cloth to wipe the earbuds and charging case. Do not use abrasive cleaners, alcohol, or chemical solvents.
- **Charging Contacts:** Periodically clean the charging contacts on both the earbuds and inside the case with a dry cotton swab to ensure proper connection.
- **Storage:** When not in use, store the earbuds in their charging case to protect them from dust and damage. Store in a cool, dry place away from direct sunlight and extreme temperatures.
- **Water Resistance:** The earbuds are IPX5 sweat resistant, meaning they can withstand light splashes and sweat. Do not submerge them in water or expose them to heavy rain. Dry them thoroughly if they get wet.

## 7. TROUBLESHOOTING

If you encounter issues with your PAXA M100 earbuds, refer to the following common solutions:

Problem	Possible Solution
Earbuds not pairing	<ul style="list-style-type: none"> <li>◦ Ensure earbuds are charged and in pairing mode.</li> <li>◦ Turn off and on Bluetooth on your device.</li> <li>◦ Forget "PAXA M100" from your device's Bluetooth list and re-pair.</li> <li>◦ Try resetting the earbuds (refer to case touchscreen settings for reset option).</li> </ul>
No sound from one earbud	<ul style="list-style-type: none"> <li>◦ Ensure both earbuds are charged.</li> <li>◦ Place both earbuds back in the case, close the lid, wait a few seconds, then open and try again.</li> <li>◦ Clean the charging contacts.</li> </ul>

Problem	Possible Solution
Charging case not charging	<ul style="list-style-type: none"> <li>◦ Check the USB-C cable and power adapter.</li> <li>◦ Ensure the charging port on the case is clean and free of debris.</li> </ul>
Touch controls unresponsive	<ul style="list-style-type: none"> <li>◦ Ensure your fingers are clean and dry.</li> <li>◦ Restart the earbuds by placing them in the case and closing the lid.</li> </ul>

## 8. SPECIFICATIONS

Feature	Detail
Model	M100
Bluetooth Version	5.4
Driver Size	14.2mm (Inferred from image 7106g19SlxL)
Water Resistance	IPX5 (Sweat Resistant)
Battery Life (Earbuds)	Up to 60 hours with charging case (Inferred from image 715Y4ZMDiXL)
Charging Port	USB-C
ASIN	B0FBW73ZDB
Date First Available	May 15, 2025

# Immersive Hi-Fi Sound

Lose Yourself in Every Beat, Feel Every Detail



**14.2mm**  
Driver

Image: Diagram illustrating the 14.2mm driver for immersive sound.

# Beats That Never Tap Out

60-Hour Bass Marathon



Image: Visual representation of the PAXA M100's extended 60-hour battery life.

## 9. WARRANTY AND SUPPORT

PAXA products are designed and manufactured to the highest quality standards. This product is covered by a standard manufacturer's warranty against defects in materials and workmanship from the date of purchase.

For warranty claims, technical support, or any inquiries, please contact PAXA customer service through the retailer's platform or visit the official PAXA website. Please have your purchase receipt and product model number (M100) ready when contacting support.

For more information, you may visit the [PAXA Store on Amazon](#).