

Manuals.plus /

› IOAUOVEG /

› IOAUOVEG T-Con Logic Board 6870C-0552A User Manual

IOAUOVEG 6870C-0552A

IOAUOVEG T-Con Logic Board 6870C-0552A User Manual

For 43-inch TV Models (Hisense, LG, Westinghouse, Philips, Vizio)

1. PRODUCT OVERVIEW

The IOAUOVEG 6870C-0552A T-Con Logic Board is a critical component designed for 43-inch televisions from various manufacturers, including Hisense, LG, Westinghouse, Philips, and Vizio. This board is responsible for processing video signals from the main board and transmitting them to the display panel, ensuring stable and high-quality image output. This specific variant includes the R126 resistor.

Key features of this T-Con board include:

- **Stable Picture Quality:** Provides a stable AC power supply to ensure even display backlighting and consistent image presentation.
- **Efficient Performance:** Contributes to fast response speeds for quick and stable TV operation.
- **Energy Saving:** Designed with energy conversion features to help reduce the TV's overall power consumption.
- **Compact Design:** Its compact size allows for thinner and lighter TV designs, enhancing aesthetics and portability.

2. PRODUCT SPECIFICATIONS

Specification	Detail
Part Model	6870C-0552A
Compatibility	Hisense, LG, Westinghouse, Philips, Vizio (43-inch TVs)
Included Resistor	R126 Resistor
Item Weight	1.76 ounces
Package Dimensions	0.39 x 0.39 x 0.39 inches
Manufacturer	angfan

3. INSTALLATION AND SETUP

Important Safety Information: Installation of internal TV components should only be performed by qualified technicians. Improper installation can lead to electric shock, damage to the TV, or personal injury. Always disconnect the TV from the power source before beginning any installation or repair work.

3.1 Pre-Installation Checklist

- Ensure the TV is unplugged from the wall outlet.
- Gather necessary tools (e.g., screwdrivers, anti-static wrist strap).
- Confirm the new T-Con board (6870C-0552A) matches the original board's model number and specifications.
- Work in a clean, well-lit, and static-free environment.

3.2 Installation Steps

1. **Access the TV's Interior:** Carefully remove the back cover of the television. Refer to your TV's specific service manual for instructions on how to safely open the casing.
2. **Locate the Existing T-Con Board:** The T-Con board is typically located at the top or bottom center of the display panel, often covered by a metal shield. It connects to the main board via a ribbon cable and to the display panel via two or more flat flexible cables (FFCs).
3. **Disconnect Cables:** Gently disconnect all ribbon cables and FFCs from the existing T-Con board. Be extremely careful not to damage the connectors or cables.
4. **Remove the Old Board:** Unscrew any retaining screws holding the old T-Con board in place and carefully remove it.
5. **Install the New Board:** Position the new IOAUOVEG 6870C-0552A T-Con board in the same location. Secure it with the screws previously removed.
6. **Reconnect Cables:** Carefully reattach all ribbon cables and FFCs to the new board. Ensure they are seated correctly and securely. Improper connection can lead to display issues.
7. **Test Functionality:** Before reassembling the TV, temporarily plug it into power and turn it on to verify that the display functions correctly. Look for a clear, stable image without artifacts.
8. **Reassemble TV:** If the test is successful, disconnect power, and carefully reattach the TV's back cover and any other components removed during disassembly.

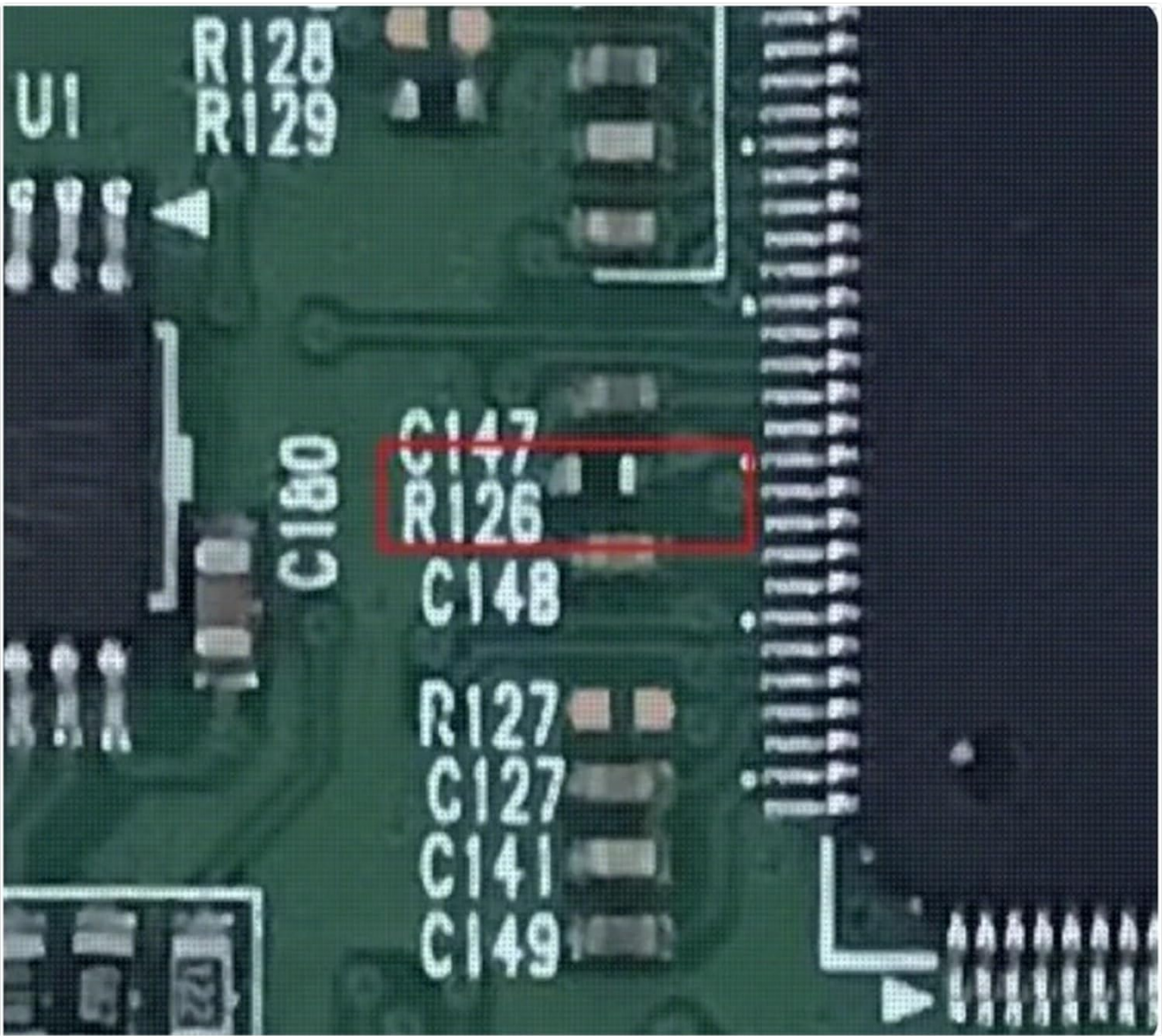


Figure 1: Front view of the IOAUOVEG 6870C-0552A T-Con Logic Board. This image shows the main components and connectors on the board.

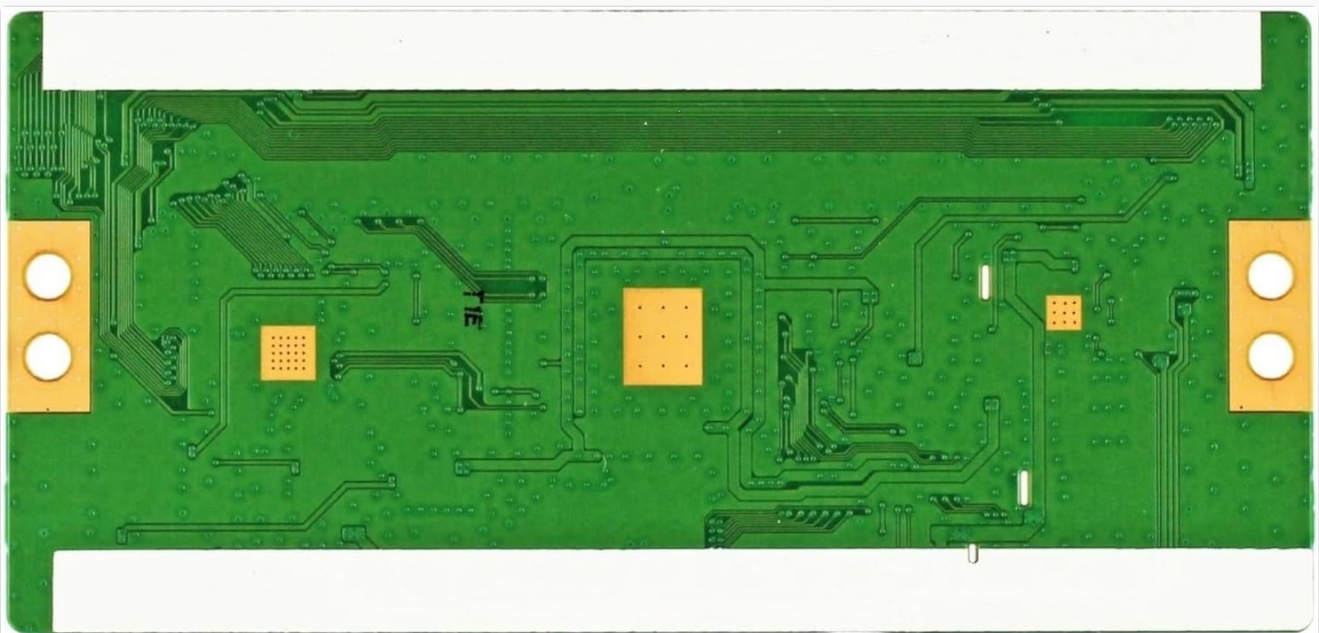


Figure 2: Rear view of the IOAUOVEG 6870C-0552A T-Con Logic Board, showing the circuit traces and mounting points.

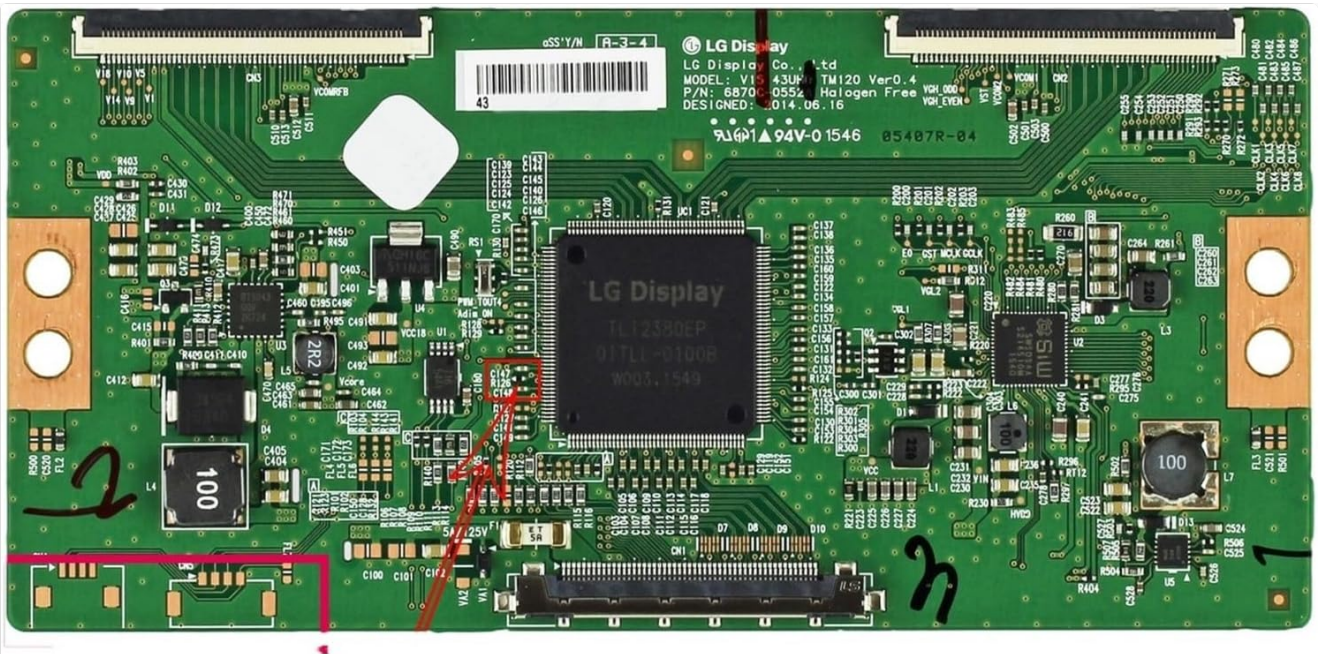


Figure 3: Detailed view of the T-Con Logic Board, highlighting the location of the R126 resistor and other circuit elements. This image is useful for verifying the specific variant of the board.

4. OPERATION

Once correctly installed, the T-Con Logic Board operates automatically as part of the television's display system. It receives digital video signals from the TV's main board and converts them into a format suitable for the LCD or LED panel. This process involves timing control, gamma correction, and other image processing functions to ensure accurate color reproduction and stable image display.

No user interaction is required for the operation of the T-Con board itself. Its proper functioning is indicated by a clear, stable, and correctly colored image on the television screen.

5. MAINTENANCE

The IOAUOVEG 6870C-0552A T-Con Logic Board is a sealed electronic component and does not require routine user maintenance. To ensure its longevity and optimal performance, consider the following general guidelines for your television:

- **Keep the TV Clean:** Regularly dust the exterior of the TV to prevent dust buildup, which can impede ventilation.
- **Ensure Proper Ventilation:** Do not block the TV's ventilation openings. Adequate airflow prevents overheating, which can damage internal components.
- **Avoid Extreme Conditions:** Protect the TV from extreme temperatures, high humidity, and direct sunlight.
- **Handle with Care:** Avoid physical shocks or impacts to the TV, as these can dislodge or damage internal connections.

If the T-Con board requires cleaning due to dust accumulation internally, this should only be performed by a qualified technician using appropriate tools and anti-static precautions.

6. TROUBLESHOOTING

If you experience display issues after installing the T-Con board, consider the following troubleshooting steps. Remember, internal TV repairs should be handled by professionals.

6.1 Common Display Issues and Solutions

- **No Picture, but Sound is Present:**

- Verify all ribbon cables and FFCs are securely connected to the T-Con board and the display panel.
- Check the power supply to the T-Con board.
- Ensure the main board is sending a signal to the T-Con board.

- **Distorted, Flickering, or Incorrect Colors:**

- Inspect FFCs for damage or improper seating. Even a slight misalignment can cause these issues.
- Ensure the T-Con board is the correct model for your TV panel.
- A faulty main board or display panel could also cause these symptoms.

- **Half Screen Display or Lines on Screen:**

- This often indicates an issue with one of the FFCs connecting to the display panel or a problem with the display panel itself.
- Re-seat the FFCs carefully.

If these steps do not resolve the issue, it is recommended to consult a professional TV repair technician.

7. WARRANTY AND SUPPORT

For warranty information and technical support regarding your IOAUOVEG 6870C-0552A T-Con Logic Board, please refer to the seller or manufacturer's documentation provided at the time of purchase. If you purchased this product through Amazon, you may contact the seller "dnezhxuanjunshangmaoyouxiangongsi" directly through your Amazon order history for assistance.

Always provide your purchase details, including the order number and product model (6870C-0552A), when seeking support.