

## Ploomen 673658152294

# Ploomen 4K Digital Camera (Model 673658152294) Instruction Manual

Your guide to capturing life in vivid detail.

## 1. PRODUCT OVERVIEW

The Ploomen 4K Digital Camera is a versatile and compact device designed for high-quality photography and videography. It features 4K Ultra HD video recording at 30 frames per second (FPS) and captures stunning 48-megapixel (MP) photos. Equipped with autofocus, a 2.8-inch 180° flip screen, and 16X digital zoom, this camera is suitable for various uses, including vlogging, travel, and everyday photography. It comes with a 1500mAh rechargeable battery and a 64GB SD card for ample storage.



Image 1.1: The Ploomen 4K Digital Camera shown with its full accessory bundle, including a storage bag, USB charging cable, 64GB SD card, wrist strap, and cleaning cloth.

## 2. GETTING STARTED

### 2.1 Unboxing and Initial Setup

Upon unboxing your Ploomen 4K Digital Camera, ensure all components are present:

- Camera Body
- USB Charging Cable
- 64GB SD Card
- Wrist Strap
- Cleaning Cloth
- Storage Bag

# Luxury Photography Gift for Special Someones



Image 2.1: All items included in the camera package, neatly arranged.

## 2.2 Charging the Battery

The camera is equipped with a 1500mAh rechargeable battery. Before first use, fully charge the battery using the provided USB cable. Connect the small end of the USB cable to the camera's USB port and the larger end to a compatible USB power adapter (not included) or a computer's USB port. The charging indicator light will illuminate during charging and turn off when complete.

## 2.3 Inserting the SD Card

Locate the SD card slot on the side of the camera. Insert the provided 64GB SD card into the slot with the metal contacts facing the correct direction until it clicks into place. To remove, gently press the card until it pops out.

## 2.4 Powering On/Off

To power on the camera, press and hold the power button located on the top of the camera. The screen will display a welcome message and then switch to live view. To power off, press and hold the power button again.

## 3. BASIC OPERATION

### 3.1 Using the 180° Flip Screen

The camera features a 2.8-inch IPS screen that can flip 180 degrees, making it ideal for self-portraits and vlogging. Simply rotate the screen to your desired angle to monitor your shot in real-time.

# Autofocus & Rotatable HD IPS Screen

**2.8 inch Screen**

**180°**

**Fast Autofocus**

Image 3.1: The camera's flip screen in action, showing its versatility for different shooting angles.

### 3.2 Taking Photos (48MP)

To take a photo, ensure the camera is in photo mode (indicated by an icon on the screen). Frame your shot using the flip screen. The camera's autofocus system will automatically adjust for clarity. Press the shutter button halfway to focus, then fully press to capture the 48MP image.



Image 3.2: Example of a high-resolution 48MP photo captured by the camera.

### 3.3 Recording Videos (4K 30FPS)

Switch the camera to video mode. Press the shutter button to start recording 4K video at 30FPS. Press it again to stop. The camera features anti-shake technology for smoother footage.

# 4K 30FPS Ultra HD Video

Smooth & Sharp 4K Footage Every Time

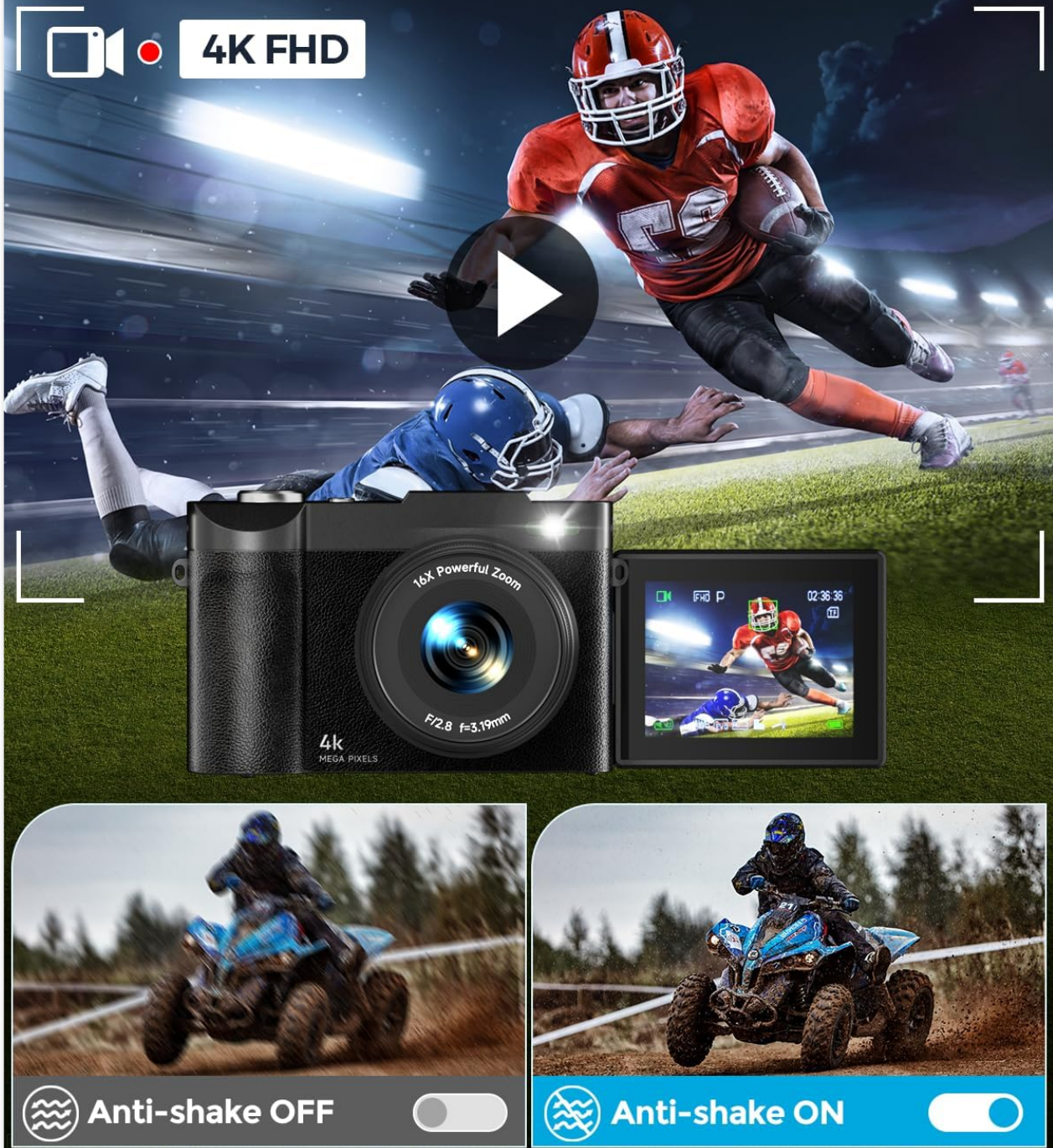


Image 3.3: The camera's screen displaying video recording with anti-shake enabled.

## 3.4 Digital Zoom and Filters

Utilize the 16X digital zoom to bring distant subjects closer. The camera also includes multiple built-in filters to enhance your photos and videos with various artistic effects.

# 16X Zoom & Multi-Filter Camera



Easily adjust the lens focus to make the distant scenery clearly visible

Image 3.4: Visual representation of the 16X digital zoom capability and different filter effects.

## 4. ADVANCED FEATURES

### 4.1 Webcam Mode

Connect the camera to your computer via the USB cable to use it as a webcam. This feature is useful for video calls, online classes, or live streaming, providing a higher quality image than standard built-in webcams.

# Ultralight 2-in-1 Camera & Webcam

## - All in One Ultra-Light Package



Image 4.1: The camera set up on a tripod, functioning as a webcam for a video call on a laptop.

## 4.2 File Transfer

Transfer photos and videos to your computer by connecting the camera via USB. The camera supports plug-and-play functionality, allowing easy access to your files for editing, backup, or sharing.

Video 4.2: An overview of the Ploomen 4K Digital Camera's features, including its 4K video capabilities and ease of use.

## 5. CARE AND MAINTENANCE

To ensure the longevity and optimal performance of your camera, follow these care guidelines:

- **Cleaning:** Use the provided cleaning cloth to gently wipe the screen and lens. Avoid abrasive materials

or harsh chemicals.

- **Storage:** When not in use, store the camera in the included storage bag to protect it from dust and scratches.
- **Environment:** Avoid exposing the camera to extreme temperatures, humidity, or direct sunlight for extended periods.

## 6. TROUBLESHOOTING

If you encounter issues with your Ploomen 4K Digital Camera, refer to the following common solutions:

- **Camera Freezes:** If the camera becomes unresponsive, try removing and reinserting the battery.
- **SD Card Issues:** Ensure the SD card is properly inserted. If issues persist, try formatting the SD card (this will erase all data, so back up important files first).
- **Transfer Problems:** Verify the USB cable connection. Ensure the camera is in the correct mode for file transfer when connected to a computer.
- **Poor Image Quality:** Check lighting conditions. Ensure the lens is clean. For optimal results, use in natural light.

## 7. SPECIFICATIONS

Feature	Detail
Product Dimensions	1.77 x 4.96 x 3.03 inches
Item Weight	10.7 ounces
ASIN	B0FBS7SWS6
Item Model Number	673658152294
Batteries	1 Nonstandard Battery (included)
Aspect Ratio	16:9
Photo Sensor Technology	CMOS
Supported File Format	JPEG, MP4
Image Stabilization	Optical
Maximum Aperture	2.8 f
Brand	Ploomen
Model Name	Ploomen
Maximum Webcam Image Resolution	48 MP
Photo Sensor Size	1/2.3"
Exposure Control Type	Automatic

## 8. WARRANTY AND SUPPORT

For warranty information or technical support, please refer to the contact details provided in your product packaging or visit the official Ploomen website. Each item has a unique code that is verified before shipping to ensure authenticity.